

Distances shown on this plan are ground distances and can be converted to grid distances by multiplying by the combined scale factor of 0.999958.

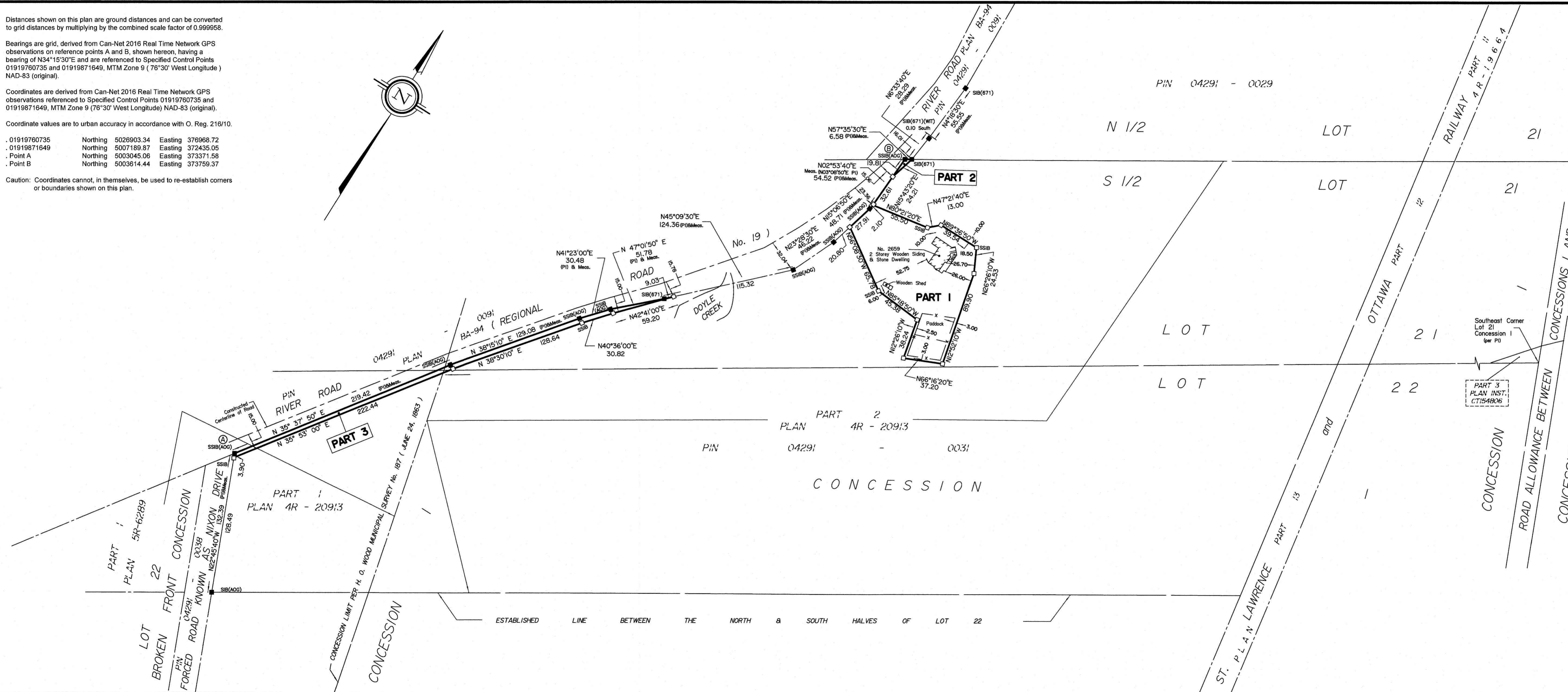
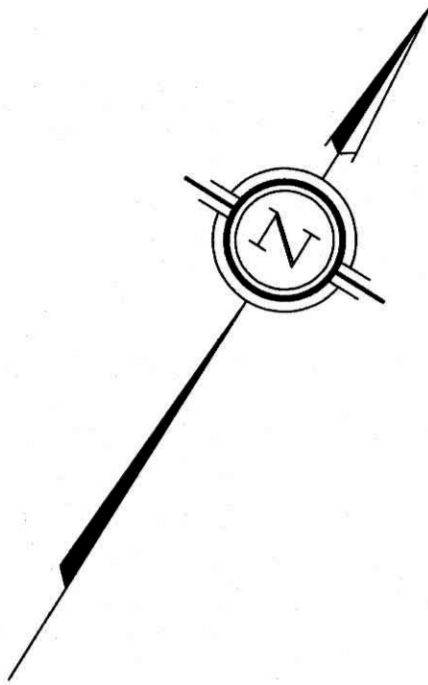
Bearings are grid, derived from Can-Net 2016 Real Time Network GPS observations on reference points A and B, shown hereon, having a bearing of N34°15'30"E and are referenced to Specified Control Points 01919760735 and 01919871649, MTM Zone 9 (76°30' West Longitude) NAD-83 (original).

Coordinates are derived from Can-Net 2016 Real Time Network GPS observations referenced to Specified Control Points 01919760735 and 01919871649, MTM Zone 9 (76°30' West Longitude) NAD-83 (original).

Coordinate values are to urban accuracy in accordance with O. Reg. 216/10.

.01919760735 Northing 5026903.34 Easting 376968.72  
 .01919871649 Northing 5007189.87 Easting 372435.05  
 .Point A Northing 5003045.06 Easting 373371.58  
 .Point B Northing 5003614.44 Easting 373759.37

Caution: Coordinates cannot, in themselves, be used to re-establish corners or boundaries shown on this plan.

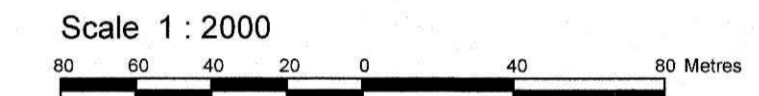


I REQUIRE THIS PLAN TO BE DEPOSITED UNDER THE LAND TITLES ACT.  
 DATE: \_\_\_\_\_  
 T. HARTWICK  
 ONTARIO LAND SURVEYOR  
 REPRESENTATIVE FOR LAND REGISTRAR FOR THE LAND TITLES DIVISION OF OTTAWA-CARLETON NO. 4.

**PLAN 4R-**  
 RECEIVED AND DEPOSITED DATE: \_\_\_\_\_

SCHEDULE				
AREA (Sq.m.)	PART	LOT	CONCESSION	PIN
9845.0	1	PART OF 21	1	PART OF 04291-0031
1687.3	2			
53.1	3	PART OF 21 & 22	BROKEN FRONT & 1	

PLAN OF SURVEY OF  
**PART OF LOT 21 AND 22  
 BROKEN FRONT CONCESSION  
 AND CONCESSION 1**  
 Geographic Township of Osgoode  
**CITY OF OTTAWA**  
 Surveyed by Annis, O'Sullivan, Vollebakk Ltd.



Metric  
 DISTANCES AND COORDINATES SHOWN ON THIS PLAN ARE IN METRES AND CAN BE CONVERTED TO FEET BY DIVIDING BY 0.3048.

**Surveyor's Certificate**  
 I CERTIFY THAT:  
 1. This survey and plan are correct and in accordance with the Surveys Act, the Surveyors Act and the Land Titles Act and the regulations made under them.  
 2. The survey was completed on the \_\_ day of March, 2023.

Date: \_\_\_\_\_  
 T. Hartwick  
 Ontario Land Surveyor

This plan of survey relates to AOLS Plan Submission Form Number V-45040

- Notes & Legend**
- Denotes Survey Monument Planted
  - " Survey Monument Found
  - SIB " Standard Iron Bar
  - SSIB " Short Standard Iron Bar
  - IB " Iron Bar
  - (WIT) " Witness
  - Meas. " Measured
  - (AOG) " Annis, O'Sullivan, Vollebakk Ltd.
  - (P1) " Plan 4R-20913
- All planted survey monuments are IB's unless otherwise noted.

**ANNIS, O'SULLIVAN, VOLLEBEKK LTD.**  
 14 Concourse Gate, Suite 500  
 Nepean, Ont. K2E 7S6  
 Phone: (613) 727-0850 / Fax: (613) 727-1079  
 Email: Nepean@aovltd.com

Ontario Land Surveyors Job No. 23816-23 Allen PTL121822 Cont 06 R D2.dwg