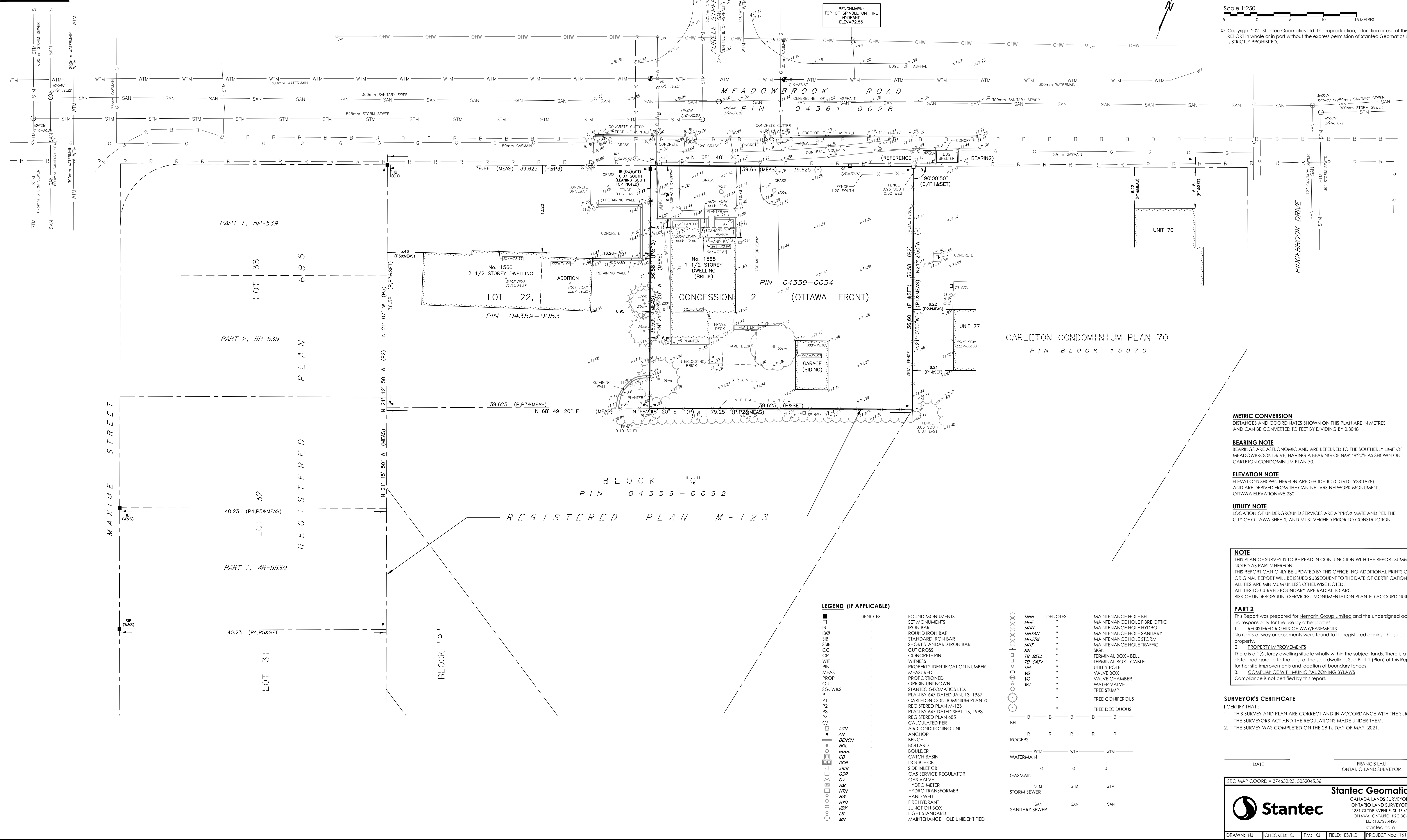


ASSOCIATION OF ONTARIO
LAND SURVEYORS
PLAN SUBMISSION FORM
2169088

THIS PLAN IS NOT VALID
UNLESS IT IS AN UNREPRODUCED
ORIGINAL COPY
ISSUED BY THE SURVEYOR
In accordance with
Regulation 1928, Section 29(2)



SURVEYOR'S REAL PROPERTY REPORT
PART 1 - PLAN OF SURVEY
PART OF LOT 22
CONCESSION 2 (OTTAWA FRONT)
(GEOGRAPHIC TOWNSHIP OF GLOUCESTER)
CITY OF OTTAWA

Scale 1:250
5 0 5 10 15 METRES

© Copyright 2021 Stantec Geomatics Ltd. The reproduction, alteration or use of this REPORT in whole or in part without the express permission of Stantec Geomatics Ltd. is STRICTLY PROHIBITED.

METRIC CONVERSION
DISTANCES AND COORDINATES SHOWN ON THIS PLAN ARE IN METRES
AND CAN BE CONVERTED TO FEET BY DIVIDING BY 0.3048

BEARING NOTE
BEARINGS ARE ASTRONOMIC AND ARE REFERRED TO THE SOUTHERLY LIMIT OF
MEADOWBROOK DRIVE, HAVING A BEARING OF N68°46'20"E AS SHOWN ON
CARLETON CONDOMINIUM PLAN 70.

ELEVATION NOTE
ELEVATIONS SHOWN HEREON ARE GEODETIC (CGVD-1928:1978)
AND ARE DERIVED FROM THE CAN-NET VRS NETWORK MONUMENT:
OTTAWA ELEVATION=95.230.

UTILITY NOTE
LOCATION OF UNDERGROUND SERVICES ARE APPROXIMATE AND PER THE
CITY OF OTTAWA SHEETS, AND MUST BE VERIFIED PRIOR TO CONSTRUCTION.

NOTE
THIS PLAN OF SURVEY IS TO BE READ IN CONJUNCTION WITH THE REPORT SUMMARY
NOTED AS PART 2 HEREON.
THIS REPORT CAN ONLY BE UPDATED BY THIS OFFICE. NO ADDITIONAL PRINTS OF THIS
ORIGINAL REPORT WILL BE ISSUED SUBSEQUENT TO THE DATE OF CERTIFICATION.
ALL TIES ARE MINIMUM UNLESS OTHERWISE NOTED.
ALL TIES TO CURVED BOUNDARY ARE RADIAL TO ARC.
RISK OF UNDERGROUND SERVICES. MONUMENT PLANTED ACCORDINGLY.

PART 2
This Report was prepared for **Nematin Group Limited** and the undersigned accepts
no responsibility for the use by other parties.
1. **REGISTERED RIGHTS-OF-WAY/EASEMENTS**
No rights-of-way or easements were found to be registered against the subject
property.
2. **PROPERTY IMPROVEMENTS**
There is a 1 1/2 storey dwelling situated wholly within the subject lands. There is a
detached garage to the east of the said dwelling. See Part 1 (Plan) of this Report for
further site improvements and location of boundary fences.
3. **COMPLIANCE WITH MUNICIPAL ZONING BYLAWS**
Compliance is not certified by this report.

SURVEYOR'S CERTIFICATE
I CERTIFY THAT:
1. THIS SURVEY AND PLAN ARE CORRECT AND IN ACCORDANCE WITH THE SURVEYS ACT,
THE SURVEYORS ACT AND THE REGULATIONS MADE UNDER THEM.
2. THE SURVEY WAS COMPLETED ON THE 28TH DAY OF MAY, 2021.

DATE _____ FRANCIS LAU
ONTARIO LAND SURVEYOR

SRO MAP COORD = 374632.23, 5032045.36

Stantec Geomatics Ltd.
CANADA LANDS SURVEYORS
ONTARIO LAND SURVEYORS
1301 CLIFTON AVENUE, SUITE 400
OTTAWA, ONTARIO, K2C 3G4
TEL: 613.722.4420
stantec.com

DRAWN: NJ CHECKED: KJ PM: KJ FIELD: ES/KC PROJECT No.: 161614373-111