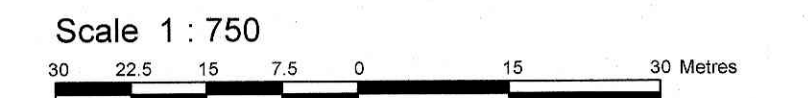


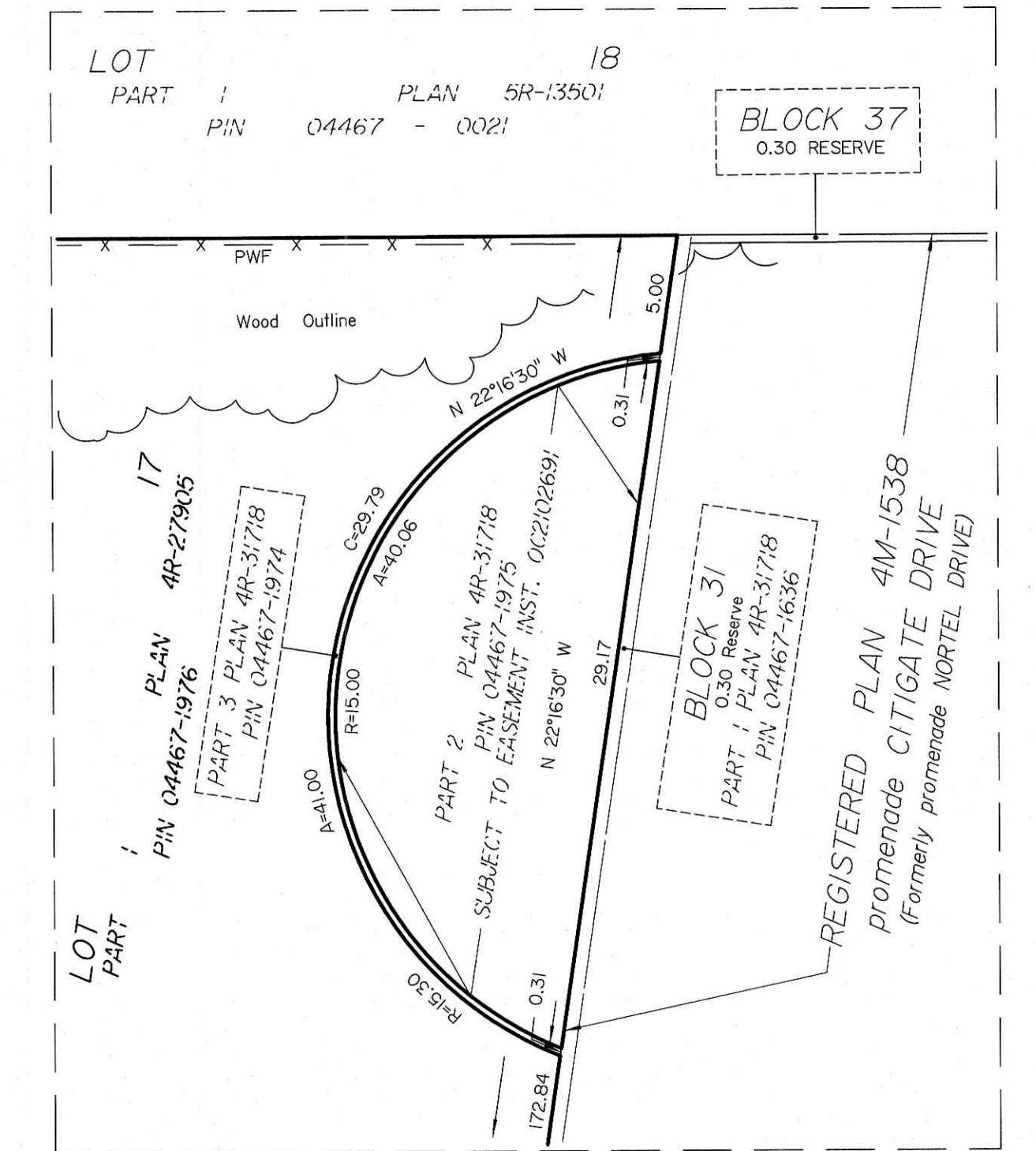
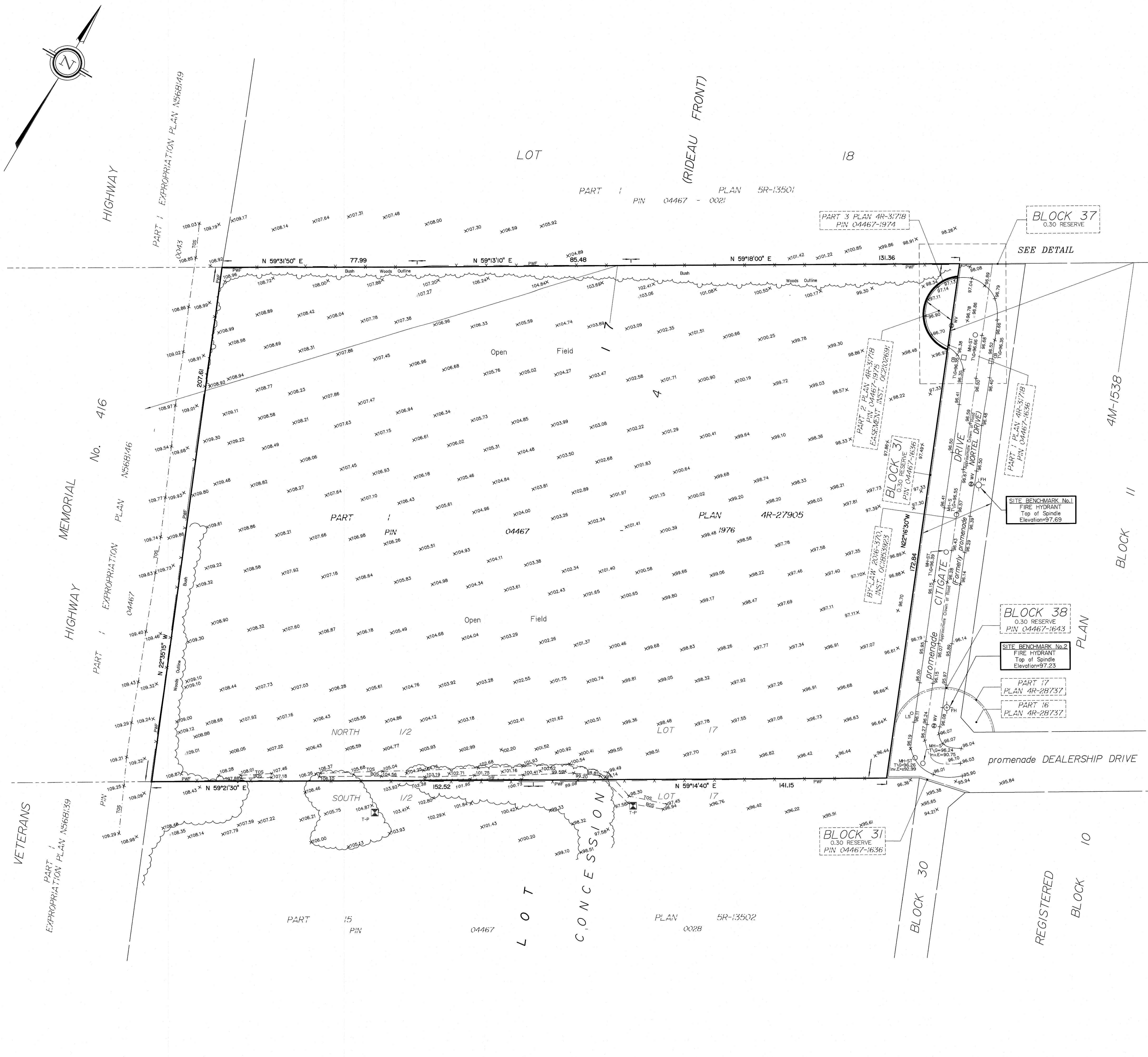
TOPOGRAPHICAL PLAN OF
575 DEALERSHIP DRIVE
 CITY OF OTTAWA

Prepared by Annis, O'Sullivan, Vollebek Ltd.
 Field Work Completed July 10, 2021



Metric
 DISTANCES SHOWN ON THIS PLAN ARE IN METRES AND
 CAN BE CONVERTED TO FEET BY DIVIDING BY 0.3048

July 29, 2021
 Date
 E. H. Herweyer
 Ontario Land Surveyor



DETAIL
 Scale 1:250

Caution
 This is NOT a Plan of Survey and shall not be used except for the purpose indicated in the title block.

SITE AREA = 6.0439 Ha.

BOUNDARY INFORMATION COMPILED FROM
 REGISTERED PLAN 4M-1538, PLANS 4R-27905, PLAN 4R-31718
 AND SURVEY RECORDS.

Notes & Legend

- Denotes
- FH " Fire Hydrant
 - ⊗ T-P " Test Pit
 - ⊕ W/V " Water Valve
 - T/G " Top of Grate
 - Inv.E " Invert Elevation
 - CE " Location of Ground Elevations
 - BOS " Bottom of Slope
 - TOS " Top of Slope
 - SW " Stone Wall
 - EP " Edge of Pavement
 - MF " Metal Fence
 - PWF " Post and Wire Fence
 - FP " Flag Pole
 - LS " Light Standard
 - MH-ST " Maintenance Hole (Storm Sewer)
 - MH-S " Maintenance Hole (Sanitary)
 - ST — " Underground Storm Sewer
 - S — " Underground Sanitary Sewer
 - W — " Underground Water
 - + 65.00 " Location of Elevations
 - + 66.00 " Top of Wall Elevation
 - " Property Line

ELEVATION NOTES

- Elevations shown are geodetic and are referred to the CGVD28 geodetic datum, derived from control monument No. 00820118014, having a published elevation of 103.306m.
- It is the responsibility of the user of this information to verify that the job benchmark has not been altered or disturbed and that its relative elevation and description agrees with the information shown on this drawing.

UTILITY NOTES

- This drawing cannot be accepted as acknowledging all of the utilities and it will be the responsibility of the user to contact the respective utility authorities for confirmation.
- Only visible surface utilities were located.
- A field location of underground plant by the pertinent utility authority is mandatory before any work involving breaking ground, probing, excavating etc.
- Sanitary and Storm Sewer grades and inverts were taken from a Plan by Farley, Smith & Denis Surveying Ltd. dated June 8, 2018.