

PART OF LOT 3 WEST NELSON STREET LOTS REGISTERED PLAN 43586 CITY OF OTTAWA

Surveyed by Annis, O'Sullivan, Vollebek Ltd.

Scale 1:150

Metric DISTANCES SHOWN ON THIS PLAN ARE IN METRES AND CAN BE CONVERTED TO FEET BY DIVIDING BY 0.3048

Surveyor's Certificate I CERTIFY THAT: 1. This survey and plan are correct and in accordance with the Surveys Act, the Surveyors Act and the regulations made under them. 2. The survey was completed on the 25th day of November, 2022.

Date 9/22 T. Hartwick Ontario Land Surveyor

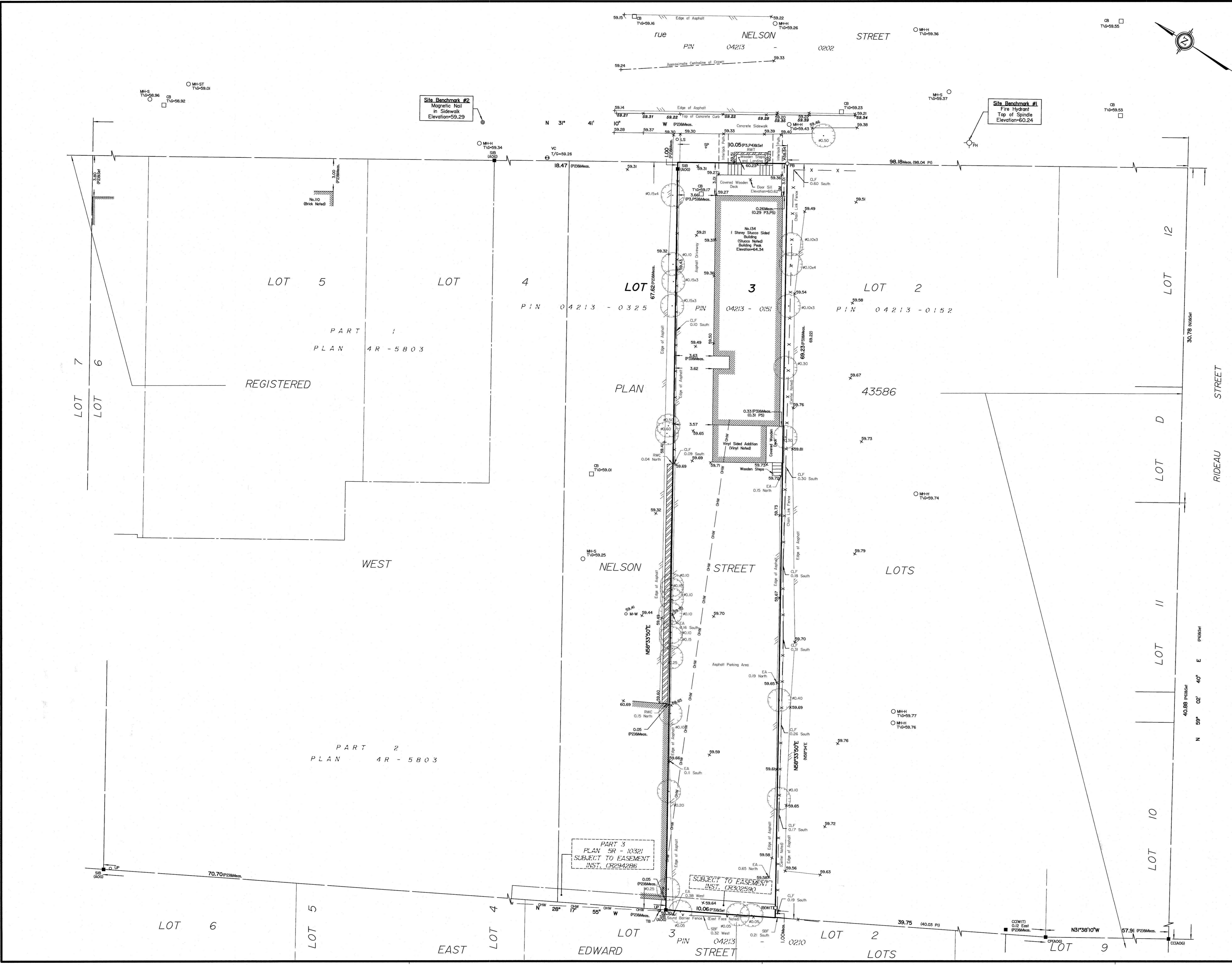
Notes & Legend table with symbols and descriptions for survey monuments, trees, fire hydrants, and utility poles.

For bearing comparisons, a rotation of 0°42'50" counter-clockwise was applied to bearings on plan P3. Bearings are grid, derived from Can-Net 2016 Real Time Network GPS observations and are referenced to Specified Control Points 01919680005 and 01919680105, MTM Zone 9 (78°30' West Longitude) NAD-83 (original).



ELEVATION NOTES 1. Elevations shown are geodetic and are referred to the CGVD28 geodetic datum. 2. It is the responsibility of the user of this information to verify that the job benchmark has not been altered or disturbed and that its relative elevation and description agrees with the information shown on this drawing.

UTILITY NOTES 1. This drawing cannot be accepted as acknowledging all of the utilities and it will be the responsibility of the user to contact the respective utility authorities for confirmation. 2. Only visible surface utilities were located. 3. A field location of underground plant by the pertinent utility authority is mandatory before any work involving breaking ground, probing, excavating etc.



Vertical text on the left edge of the page.