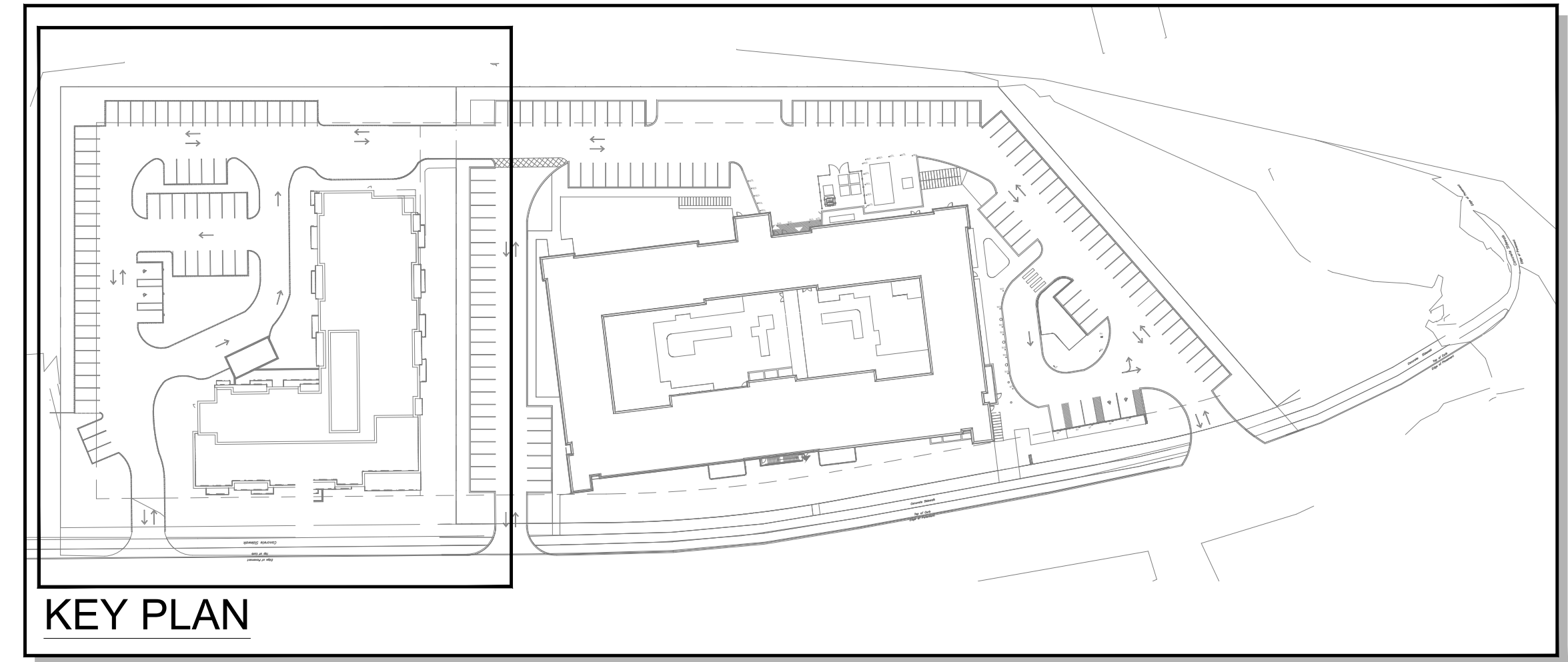


ALL DRAWINGS REMAIN THE PROPERTY OF THE LANDSCAPE ARCHITECT AND SHALL NOT BE REPRODUCED OR REUSED WITHOUT THE LANDSCAPE ARCHITECT'S WRITTEN PERMISSION.
THIS DRAWING SHALL NOT BE USED FOR CONSTRUCTION OR TENDER PURPOSES UNLESS SIGNED AND DATED BY RONALD H. KOUDY'S, O.A.L.A. C.S.L.A. LANDSCAPE ARCHITECT, LONDON, ONTARIO (519) 687-3322.

Ronald H. Koudy's, O.A.L.A. C.S.L.A. DATE



EXISTING VEGETATION PLAN 1 of 2
SCALE = 1:300

REFER TO TREE CONSERVATION REPORT FOR ADDITIONAL INFORMATION AND DETAIL ABOUT THE INVENTORY AND ASSESSMENT PROCESS

REFER TO PAGE T-3 FOR THE FOLLOWING TABLES:
- TREES TO BE PRESERVED
- TREES TO BE REMOVED

LEGEND

	EXISTING DECIDUOUS TREES TO REMAIN
	EXISTING DECIDUOUS TREES TO BE REMOVED
	EXISTING CONIFEROUS TREES TO REMAIN
	EXISTING CONIFEROUS TREES TO BE REMOVED
	CRITICAL ROOT ZONE - 10cm RADIUS PER 1cm DBH
	TREE PROTECTION BARRIER - SEE DETAIL

TREE PROTECTION SPECIFICATION

TO BE IMPLEMENTED FOR RETAINED TREES, BOTH ON SITE AND ON ADJACENT SITES, PRIOR TO ANY TREE REMOVAL OR SITE WORKS AND MAINTAINED FOR THE DURATION OF WORK ACTIVITIES ON SITE.

SCALE: NTS
DATE: MARCH 2021
DRAWING NO.: 1 of 1

TREE PROTECTION REQUIREMENTS:

1. PRIOR TO ANY WORK ACTIVITY WITHIN THE CRITICAL ROOT ZONE (CRZ) - 10x DIAMETER OF A TREE, THE PROTECTION FENCING MUST BE INSTALLED SURROUNDING THE CRITICAL ROOT ZONE, AND REMAIN IN PLACE UNTIL THE WORK IS COMPLETE.
2. UNLESS PLANS ARE APPROVED BY CITY FORESTRY STAFF, FOR WORK WITHIN THE CRZ:
 - DO NOT PLACE ANY MATERIAL OR EQUIPMENT - INCLUDING OUTRIGGERS,
 - DO NOT ATTACH ANY SIGNS, NOTICES OR POSTERS TO ANY TREE;
 - DO NOT BARE OR COVER THE EXISTING GRADE;
 - TUNNEL OR BORE WHEN DIGGING;
 - DO NOT DAMAGE THE ROOT SYSTEM, TRUNK, OR BRANCHES OR ANY TREE;
 - ENSURE THAT EXHAUST PIPES FROM ALL EQUIPMENT ARE NOT DIRECTED TOWARD ANY TREE CANOPY;
 - DO NOT EXTEND HARD SURFACE OR SIGNIFICANTLY CHANGE LANDSCAPING.
3. TREE PROTECTION FENCING MUST BE AT LEAST 1.2M IN HEIGHT, AND CONSTRUCTED OF RIGID OR FRAMED MATERIALS (E.G. MODULOC, STEEL, PLYWOOD HOARDING, OR SNOW FENCE ON A 2"x4" WOOD FRAME) WITH POSTS AND RAILS, SUCH THAT THE FENCE LOCATION CANNOT BE ALTERED. ALL SUPPORTS AND BRACING MUST BE PLACED OUTSIDE OF THE CRZ, AND INSTALLATION MUST MINIMIZE DAMAGE TO EXISTING ROOTS. (SEE DETAIL)
4. THE LOCATION OF THE TREE PROTECTION FENCING MUST BE DETERMINED BY AN ARBORIST AND DETAILED ON ANY ASSOCIATED PLANS FOR THE SITE (E.G. TREE CONSERVATION REPORT, TREE INFORMATION REPORT, ETC.). THE PLAN AND CONSTRUCTED FENCING MUST BE APPROVED BY CITY FORESTRY STAFF PRIOR TO THE COMMENCEMENT OF WORK.
5. IF THE FENCED TREE PROTECTION AREA MUST BE REDUCED TO FACILITATE CONSTRUCTION, MITIGATION MEASURES MUST BE PRESCRIBED BY AN ARBORIST AND APPROVED BY CITY FORESTRY STAFF. THESE MAY INCLUDE THE PLACEMENT OF RYPPROD, WOOD CHIPS, OR STEEL PLATING OVER THE ROOTS FOR PROTECTION OR THE PROPER PRUNING AND CARE OF ROOTS WHERE ENCOUNTERED.

THE CITY'S TREE PROTECTION BY-LAW, 2010-240 PROTECTS BOTH CITY-OWNED TREES, CITY-HOLD, AND PRIVATELY-OWNED TREES WITHIN THE URBAN AREA. PLEASE REFER TO WWW.OTTAWA.CA/TREESPLAN FOR MORE INFORMATION ON HOW THE TREE BY-LAW APPLIES.

ACCESSIBLE FORMATS AND COMMUNICATION SUPPORTS ARE AVAILABLE UPON REQUEST

#	date:	revision:	by:
11.	JAN.27.2023	RE-ISSUED FOR SITE PLAN CONTROL APPLICATION & ZONING BY-LAW AMENDMENT	MCB
10.	DEC. 16.2022	RE-ISSUED FOR MULTIC WORKING DRAWINGS	MCB
9.	AUG. 19.2022	ISSUED FOR SITE PLAN CONTROL APPLICATION	MCB
8.	AUG. 19.2022	ISSUED FOR ZONING BY-LAW AMENDMENT	MCB
7.	JUL. 29.2022	ISSUED FOR ZONING BY-LAW AMENDMENT	MCB
6.	FEB. 04.2022	ISSUED FOR ZONING BY-LAW AMENDMENT	MCB
5.	DEC. 02.2021	ISSUED FOR SPA & ZONING BY-LAW AMENDMENT	MCB
4.	NOV. 19.2021	ISSUED FOR 100% DD	MCB
3.	NOV. 19.2021	ISSUED FOR 25% SPA	MCB
2.	OCT. 22.2021	ISSUED FOR 50% DD	MCB
1.	AUG. 26.2021	ISSUED FOR 100% SD	MCB

All drawing and specifications are the property of the architect. The contractor shall verify all dimensions and information on site and report any discrepancy to architect before proceeding.

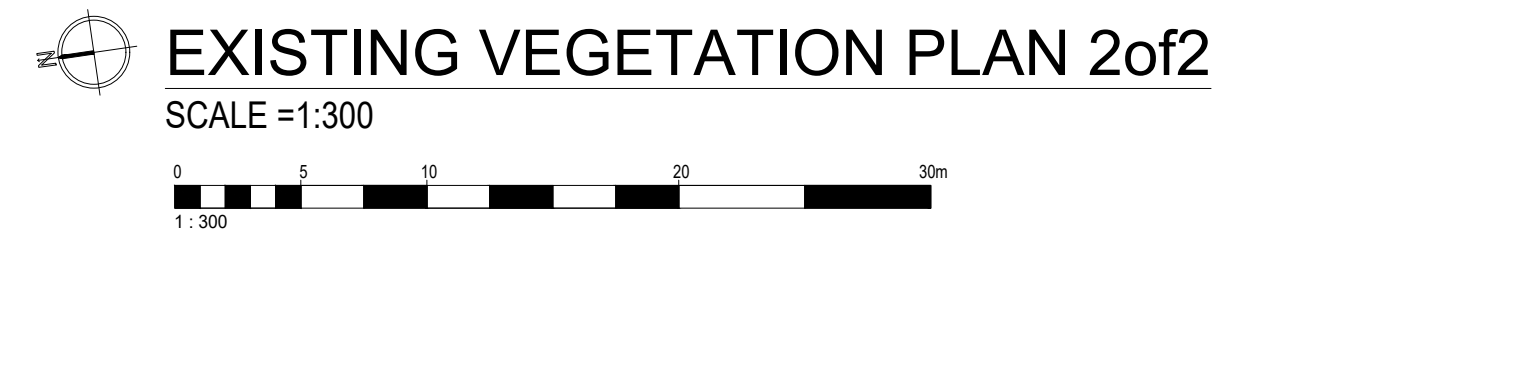
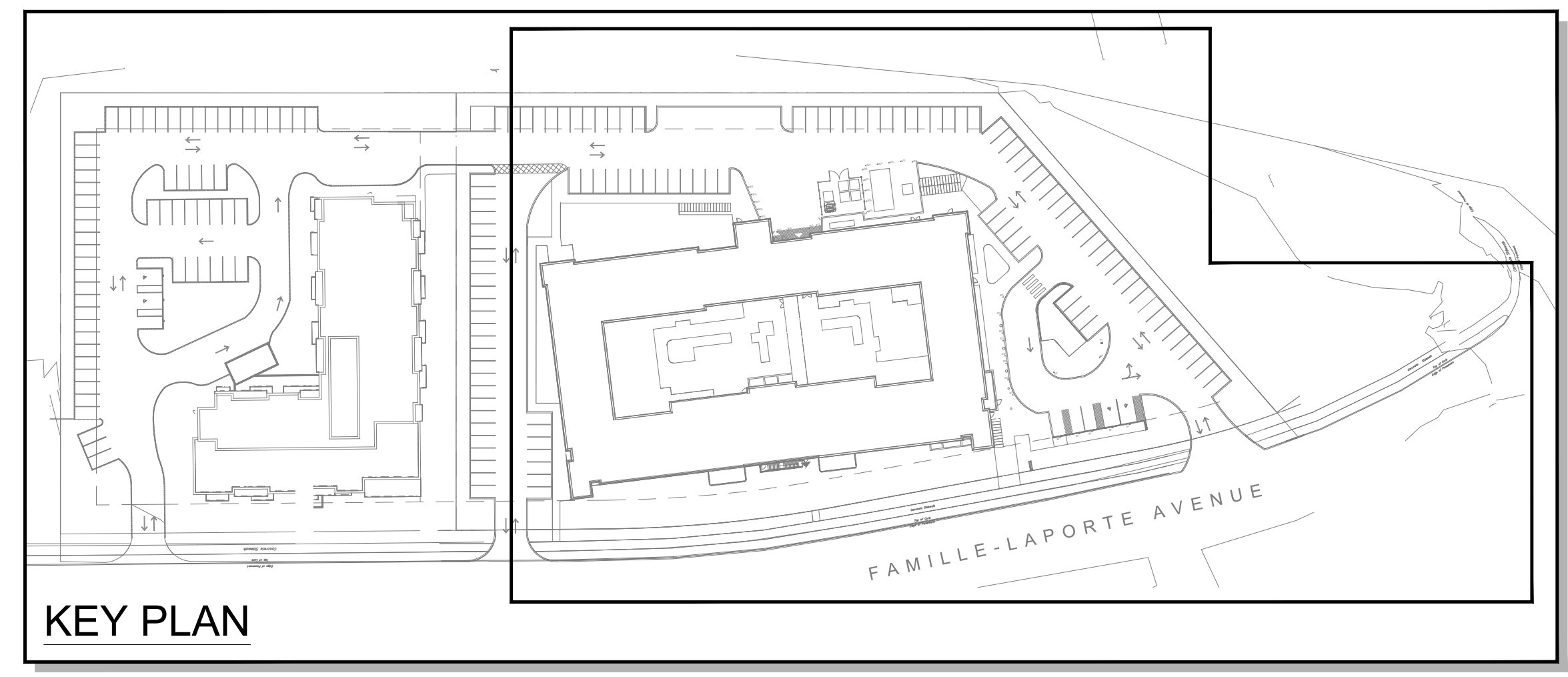
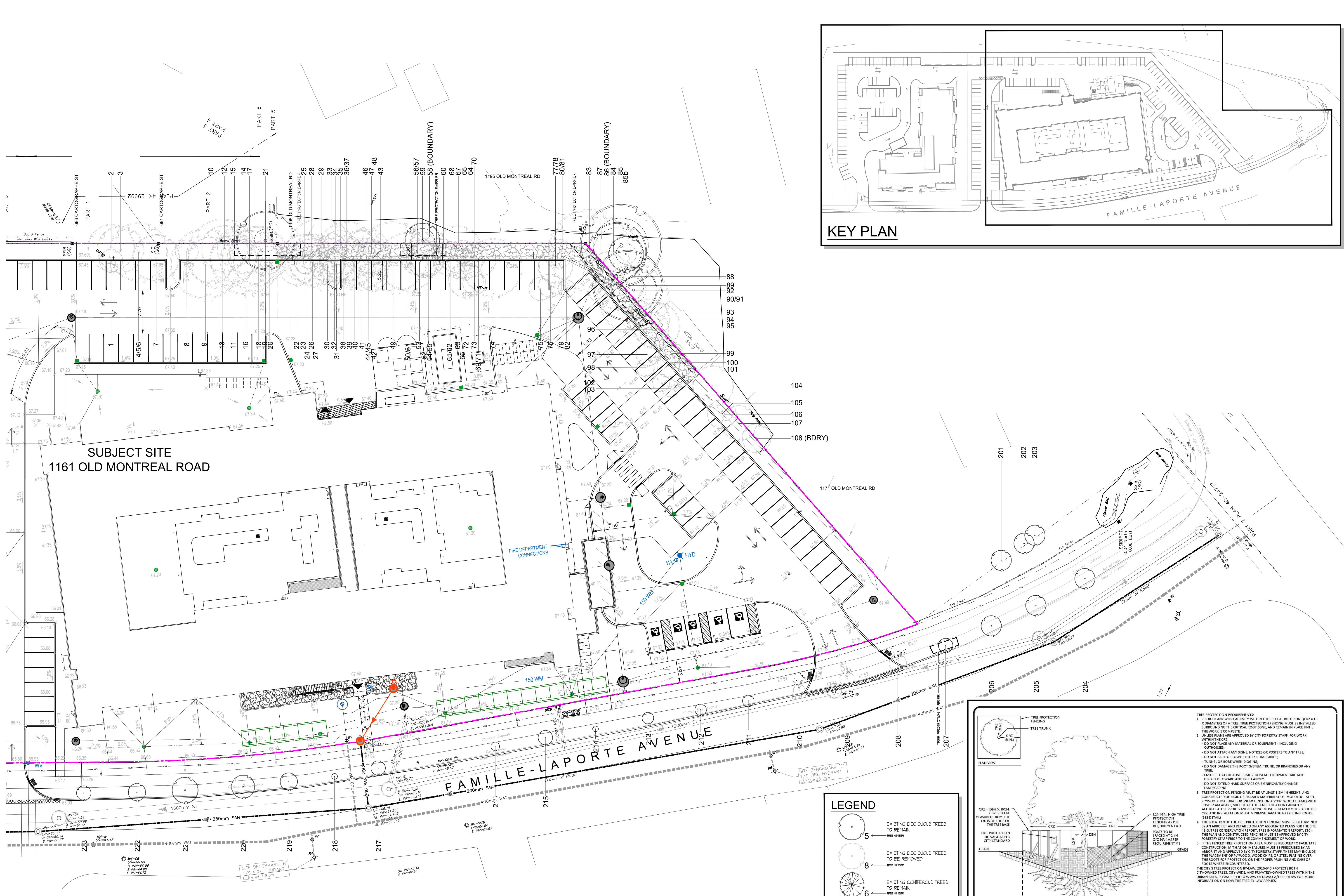
Arch Corp - Orleans

1161 OLD MONTREAL RD,
ORLEANS ON, K4A 3N6

TREE PRESERVATION PLAN
1 of 5

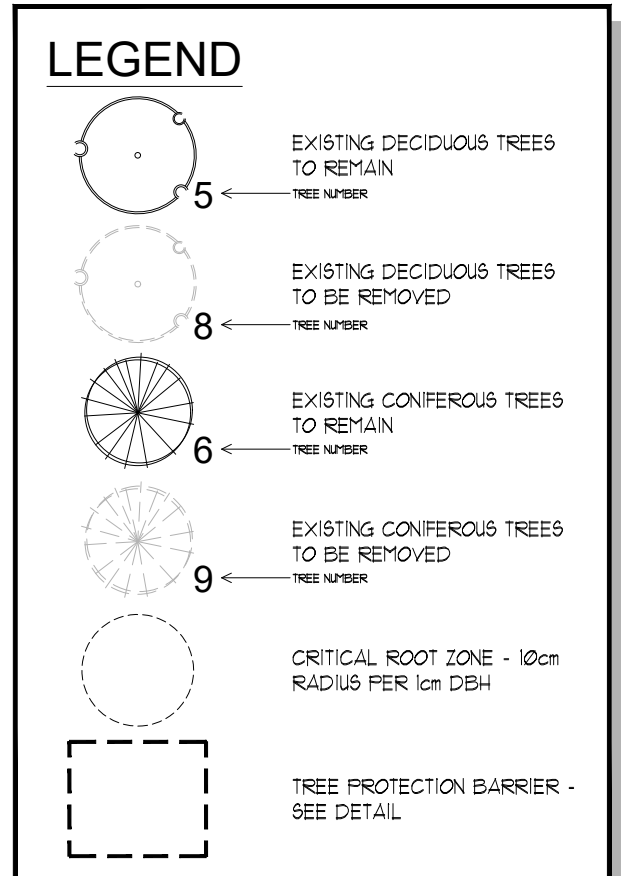
scale: AS NOTED
drawn by: MCB
reviewed by: MCB
job number: 21-164lp
plot date: 22-12-16
drawing number:

T-1



REFER TO TREE CONSERVATION REPORT FOR ADDITIONAL INFORMATION AND DETAIL ABOUT THE INVENTORY AND ASSESSMENT PROCESS

REFER TO PAGE T-3 FOR THE FOLLOWING TABLES:
 - TREES TO BE PRESERVED
 - TREES TO BE REMOVED



TREE PROTECTION SPECIFICATION

TO BE IMPLEMENTED FOR RETAINED TREES, BOTH ON SITE AND ON ADJACENT SITES, PRIOR TO ANY TREE REMOVAL OR SITE WORKS AND MAINTAINED FOR THE DURATION OF WORK ACTIVITIES ON SITE.

TREE PROTECTION REQUIREMENTS:

1. PRIOR TO ANY WORK ACTIVITY WITHIN THE CRITICAL ROOT ZONE (CRZ) - 10% DIAMETER OF A TREE, THE PROTECTION FENCING MUST BE INSTALLED SURROUNDING THE CRITICAL ROOT ZONE, AND REMAIN IN PLACE UNTIL THE WORK IS COMPLETE.
2. UNLESS PLANS ARE APPROVED BY CITY FORESTRY STAFF, FOR WORK WITHIN THE CRZ:
 - DO NOT PLACE ANY MATERIAL OR EQUIPMENT - INCLUDING OUTRIGGERS;
 - DO NOT ATTACH ANY SIGNS, NOTICES OR POSTERS TO ANY TREE;
 - DO NOT BASE OR COVER THE EXISTING GRADE;
 - TUNNEL OR BORE WHEN DIGGING;
 - DO NOT DAMAGE THE ROOT SYSTEM, TRUNK, OR BRANCHES OF ANY TREE;
 - ENSURE THAT DUMPST PILES FROM ALL EQUIPMENT ARE NOT DIRECTED TOWARD ANY TREE CANOPY;
 - DO NOT EXTEND HARD SURFACE OR SIGNIFICANTLY CHANGE LANDSCAPING.
3. TREE PROTECTION FENCING MUST BE AT LEAST 1.2M IN HEIGHT, AND CONSTRUCTED OF RIGID OR FRAMED MATERIALS (E.G. MODULAR STEEL, PLYWOOD HOARDING, OR SNOW FENCE ON A 2"x4" WOOD FRAME) WITH POSTS 2M APART, SUCH THAT THE FENCE LOCATION CANNOT BE ALTERED. ALL SUPPORTS AND BRACING MUST BE PLACED OUTSIDE OF THE CRZ, AND INSTALLATION MUST MINIMIZE DAMAGE TO EXISTING ROOTS.
4. THE LOCATION OF THE TREE PROTECTION FENCING AS PER REQUIREMENT # 3 (SEE DETAIL).
5. THE FENCED TREE PROTECTION AREA MUST BE DETERMINED BY AN ARBORIST AND DETAILED ON ANY ASSOCIATED PLANS FOR THE SITE (E.G. TREE CONSERVATION REPORT, TREE INFORMATION REPORT, ETC.). THE PLAN AND CONSTRUCTED FENCING MUST BE APPROVED BY CITY FORESTRY STAFF PRIOR TO THE COMMENCEMENT OF WORK.
6. IF THE FENCED TREE PROTECTION AREA MUST BE REDUCED TO FACILITATE CONSTRUCTION MITIGATION MEASURES MUST BE PRESCRIBED BY AN ARBORIST AND APPROVED BY CITY FORESTRY STAFF. THESE MAY INCLUDE THE PLACEMENT OF PARAPETS, WOOD CHIPS, OR STEEL PLATING OVER THE ROOTS FOR PROTECTION OR THE PROPER PRUNING AND CARE OF ROOTS WHERE ENCOUNTERED.

THE CITY'S TREE PROTECTION BY-LAW, 2010-240 PROTECTS BOTH CITY OWNED TREES, CITY-NEEDED AND PRIVATELY OWNED TREES WITHIN THE URBAN AREA. PLEASE REFER TO WWW.CITY.OTTAWA.CA/TREELAW FOR MORE INFORMATION ON HOW THE TREE BY-LAW APPLIES.

SCALE: NTS

DATE: MARCH 2021

DRAWING NO.: 1 of 1

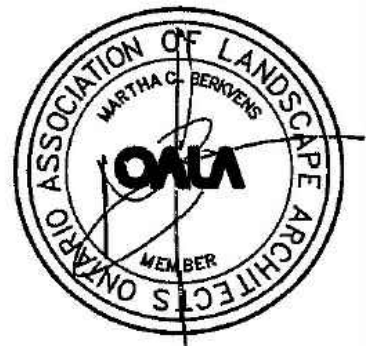
ACCESSIBLE FORMATS AND COMMUNICATION SUPPORTS ARE AVAILABLE, UPON REQUEST



ALL DRAWINGS REMAIN THE PROPERTY OF THE LANDSCAPE ARCHITECT AND SHALL NOT BE REPRODUCED OR REUSED WITHOUT THE LANDSCAPE ARCHITECT'S WRITTEN PERMISSION.

THIS DRAWING SHALL NOT BE USED FOR CONSTRUCTION OR TENDER PURPOSES UNLESS SIGNED AND DATED BY RONALD H. KOUDYS, O.A.L.A. C.S.L.A. LANDSCAPE ARCHITECT, LONDON, ONTARIO (519) 687-3322.

Ronald H. Koudys, O.A.L.A. C.S.L.A. DATE



#	date	revision	by
11.	JAN 27 2023	RE-ISSUED FOR SITE PLAN CONTROL APPLICATION & ZONING BY-LAW AMENDMENT	MCB
10.	DEC 16 2022	RE-ISSUED FOR MULTIC WORKING DRAWINGS	MCB
9.	AUG 19 2022	ISSUED FOR SITE PLAN CONTROL APPLICATION	MCB
8.	AUG 19 2022	ISSUED FOR ZONING BY-LAW AMENDMENT	MCB
7.	JUL 29 2022	ISSUED FOR ZONING BY-LAW AMENDMENT	MCB
6.	FEB 24 2022	ISSUED FOR ZONING BY-LAW AMENDMENT	MCB
5.	DEC 02 2021	ISSUED FOR SPA & ZONING BY-LAW AMENDMENT	MCB
4.	NOV 19 2021	ISSUED FOR 100% DD	MCB
3.	NOV 19 2021	ISSUED FOR 25% SPA	MCB
2.	OCT 22 2021	ISSUED FOR 50% DD	MCB
1.	AUG 26 2021	ISSUED FOR 100% SD	MCB

All drawing and specifications are the property of the architect. The contractor shall verify all dimensions and information on site and report any discrepancy to architect before proceeding.

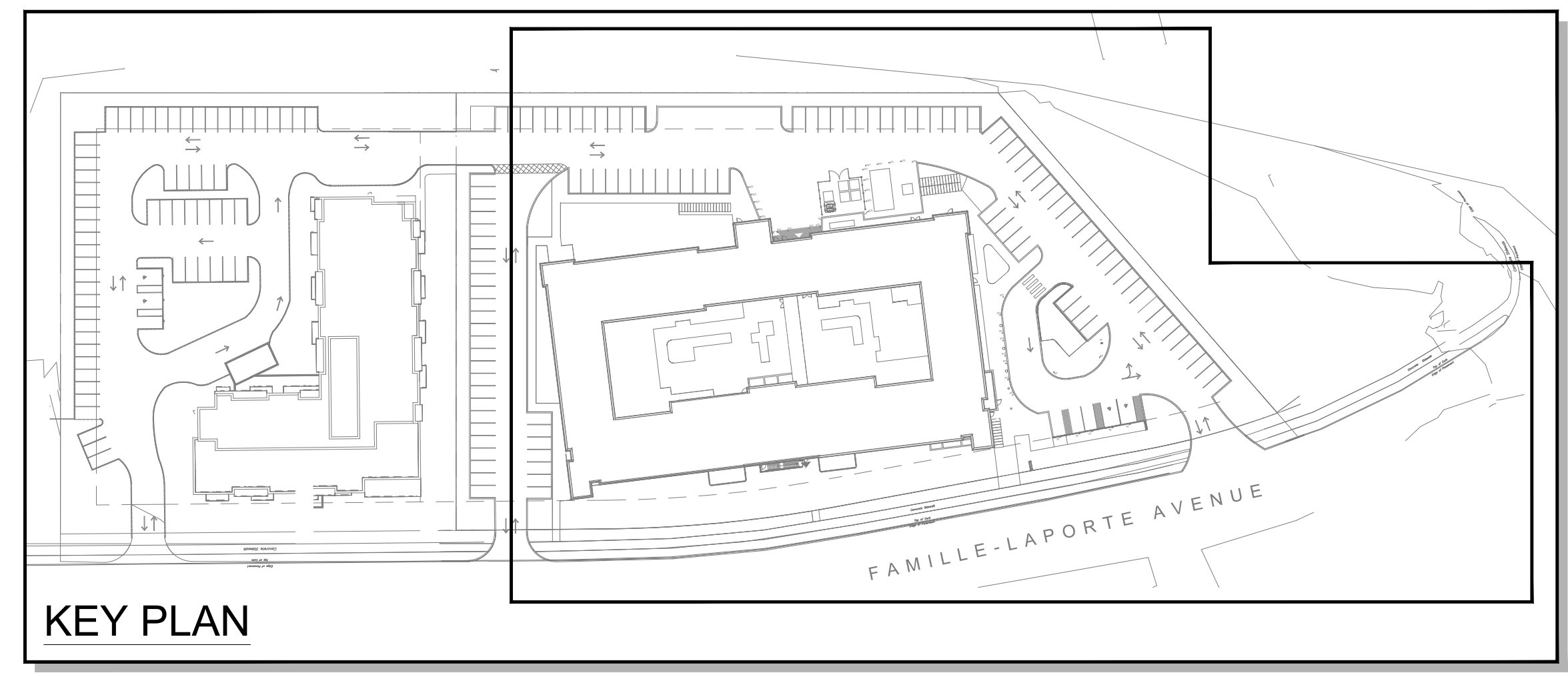
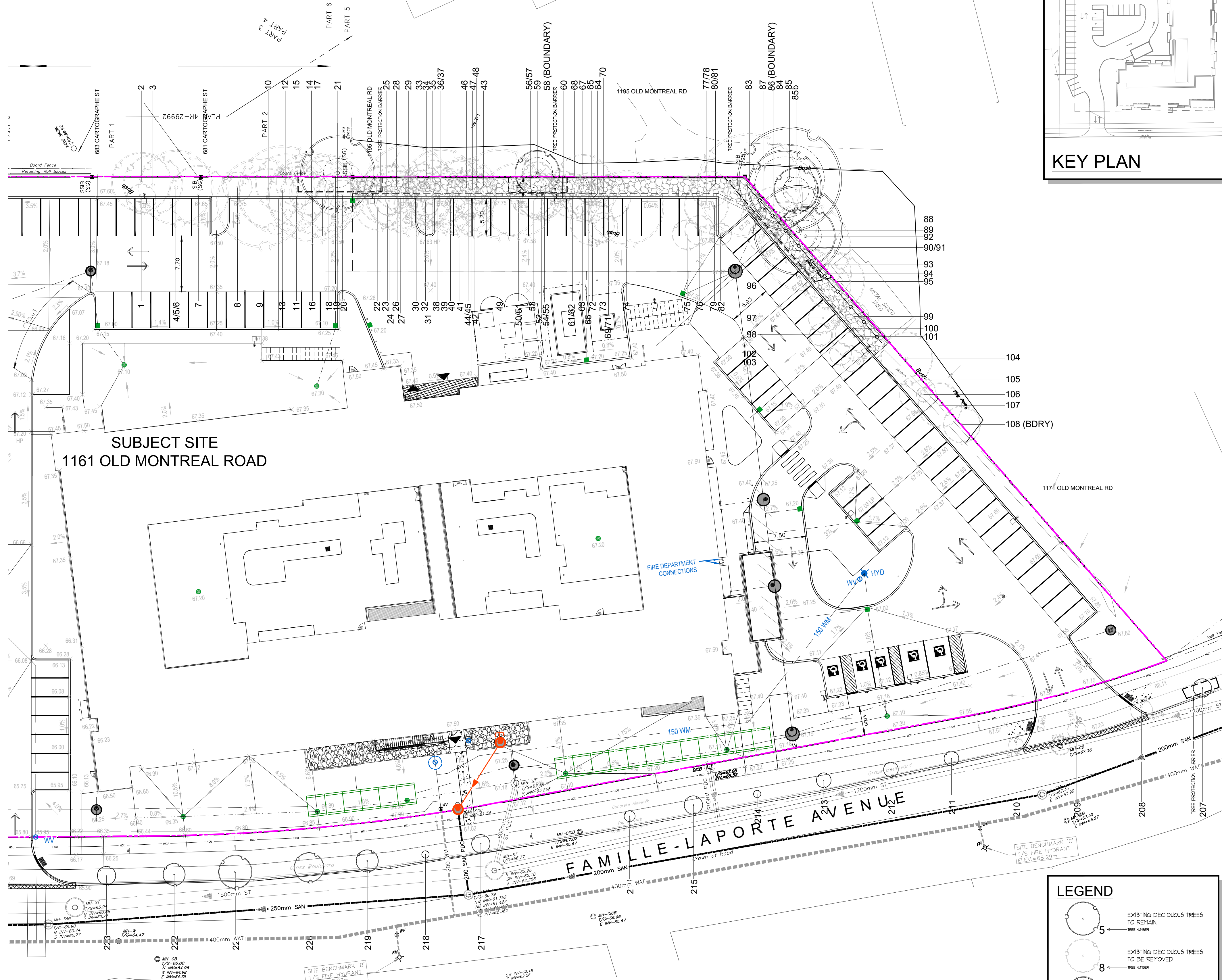
Arch Corp - Orleans

1161 OLD MONTREAL RD, ORLEANS ON, K4A 3N6

TREE PRESERVATION PLAN
2of5

scale: AS NOTED
 drawn by: MCB
 reviewed by: MCB
 job number: 21-164lp
 plot date: 22-12-16
 drawing number:

T-2



PROPOSED DEVELOPMENT & CONSERVED VEGETATION PLAN 2 of 2
 SCALE = 1:300

REFER TO TREE CONSERVATION REPORT FOR ADDITIONAL INFORMATION AND DETAIL ABOUT THE INVENTORY AND ASSESSMENT PROCESS

REFER TO PAGE T-4 FOR THE FOLLOWING TABLES:
 - TREES TO BE PRESERVED

LEGEND

	EXISTING DECIDUOUS TREES TO REMAIN
	EXISTING DECIDUOUS TREES TO BE REMOVED
	EXISTING CONIFEROUS TREES TO REMAIN
	EXISTING CONIFEROUS TREES TO BE REMOVED
	CRITICAL ROOT ZONE - 10cm RADIUS PER 1cm DBH
	TREE PROTECTION BARRIER - SEE DETAIL

TREE PROTECTION SPECIFICATION

TO BE IMPLEMENTED FOR RETAINED TREES, BOTH ON SITE AND ON ADJACENT SITES, PRIOR TO ANY TREE REMOVAL OR SITE WORKS AND MAINTAINED FOR THE DURATION OF WORK ACTIVITIES ON SITE.

SCALE: NTS
DATE: MARCH 2021
DRAWING NO.: 1 of 1

ACCESSIBLE FORMATS AND COMMUNICATION SUPPORTS ARE AVAILABLE UPON REQUEST

Ottawa

TREE PROTECTION REQUIREMENTS:

1. PRIOR TO ANY WORK ACTIVITY WITHIN THE CRITICAL ROOT ZONE (CRZ) - 10 x DIAMETER OF A TREE, THE PROTECTION FENCING MUST BE INSTALLED SURROUNDING THE CRITICAL ROOT ZONE, AND REMAIN IN PLACE UNTIL THE WORK IS COMPLETE.
2. UNLESS PLANS ARE APPROVED BY CITY FORESTRY STAFF, FOR WORK WITHIN THE CRZ:
 - DO NOT PLACE ANY MATERIAL OR EQUIPMENT - INCLUDING OUTRIGGERS;
 - DO NOT ATTACH ANY SIGNS, NOTICES OR POSTERS TO ANY TREE;
 - DO NOT BASE OR COVER THE EXISTING GRADE;
 - TUNNEL OR BORE WHEN DIGGING;
 - DO NOT DAMAGE THE ROOT SYSTEM, TRUNK, OR BRANCHES OF ANY TREE;
 - ENSURE THAT EXHAUST PIPES FROM ALL EQUIPMENT ARE NOT DIRECTED TOWARD ANY TREE CANOPY;
 - DO NOT EXTEND HARD SURFACE OR SIGNIFICANTLY CHANGE LANDSCAPING.
3. TREE PROTECTION FENCING MUST BE AT LEAST 1.2M IN HEIGHT, AND CONSTRUCTED OF RIGID OR FRAMED MATERIALS (E.G. MODULOC, STEEL, PLYWOOD HOARDING, OR SNOW FENCE ON A 2"x4" WOOD FRAME) WITH POSTS 2M APART, SUCH THAT THE FENCE LOCATION CANNOT BE ALTERED. ALL SUPPORTS AND BRACING MUST BE PLACED OUTSIDE OF THE CRZ, AND INSTALLATION MUST MINIMIZE DAMAGE TO EXISTING ROOTS. (SEE DETAIL)
4. THE LOCATION OF THE TREE PROTECTION FENCING MUST BE DETERMINED BY AN ARBORIST AND DETAILED ON ANY ASSOCIATED PLANS FOR THE SITE (E.G. TREE CONSERVATION REPORT, TREE INFORMATION REPORT, ETC.). THE PLAN AND CONSTRUCTED FENCING MUST BE APPROVED BY CITY FORESTRY STAFF PRIOR TO THE COMMENCEMENT OF WORK.
5. IF THE FENCED TREE PROTECTION AREA MUST BE REDUCED TO FACILITATE CONSTRUCTION MITIGATION MEASURES MUST BE PRESCRIBED BY AN ARBORIST AND APPROVED BY CITY FORESTRY STAFF. THESE MAY INCLUDE THE PLACEMENT OF PARAPETS, WOOD CHIPS, OR STEEL PLATING OVER THE ROOTS FOR PROTECTION OR THE PROPER PRUNING AND CARE OF ROOTS WHERE ENCOUNTERED.

THE CITY'S TREE PROTECTION BY-LAW, 2010-240 PROTECTS BOTH CITY OWNED TREES, CITY-NICK, AND PRIVATELY OWNED TREES WITHIN THE URBAN AREA. PLEASE REFER TO WWW.OTTAWA.CA/TREELAW FOR MORE INFORMATION ON HOW THE TREE BY-LAW APPLIES.

CRZ - DBH x 10cm
 CRZ TO BE PRESERVED FROM THE OUTSIDE EDGE OF THE TREE BASE

1.2M HIGH TREE PROTECTION FENCING AS PER REQUIREMENT # 3

ROOTS TO BE PLACED AT 3.4M O.C. MAX AS PER REQUIREMENT # 3

SOIL AND ROOT DISTURBANCE NOT PERMITTED



ALL DRAWINGS REMAIN THE PROPERTY OF THE LANDSCAPE ARCHITECT AND SHALL NOT BE REPRODUCED OR REUSED WITHOUT THE LANDSCAPE ARCHITECTS WRITTEN PERMISSION.

THIS DRAWING SHALL NOT BE USED FOR CONSTRUCTION OR TENDER PURPOSES UNLESS SIGNED AND DATED BY RONALD H. KOUDYS, O.A.L.A. C.S.L.A. LANDSCAPE ARCHITECT, LONDON, ONTARIO (519) 687-3322.

Ronald H. Koudys, O.A.L.A. C.S.L.A. DATE



#	date	revision	by
11.	JAN 27 2023	RE-ISSUED FOR SITE PLAN CONTROL APPLICATION & ZONING BY-LAW AMENDMENT	MCB
10.	DEC 16 2022	RE-ISSUED FOR MULTICITY WORKING DRAWINGS	MCB
9.	AUG 19 2022	ISSUED FOR SITE PLAN CONTROL APPLICATION	MCB
8.	AUG 19 2022	ISSUED FOR ZONING BY-LAW AMENDMENT	MCB
7.	JUL 29 2022	ISSUED FOR ZONING BY-LAW AMENDMENT	MCB
6.	FEB 24 2022	ISSUED FOR ZONING BY-LAW AMENDMENT	MCB
5.	DEC 02 2021	ISSUED FOR SPA & ZONING BY-LAW AMENDMENT	MCB
4.	NOV 19 2021	ISSUED FOR 100% DD	MCB
3.	NOV 19 2021	ISSUED FOR 25% SPA	MCB
2.	OCT 22 2021	ISSUED FOR 50% DD	MCB
1.	AUG 26 2021	ISSUED FOR 100% SD	MCB

All drawing and specifications are the property of the architect. The contractor shall verify all dimensions and information on site and report any discrepancy to architect before proceeding.

Arch Corp - Orleans

1161 OLD MONTREAL RD, ORLEANS ON, K4A 3N6

TREE PRESERVATION PLAN
 50f5

scale: AS NOTED
 drawn by: MCB
 reviewed by: MCB
 job number: 21-164lp
 plot date: 22-12-16
 drawing number:

T-5