

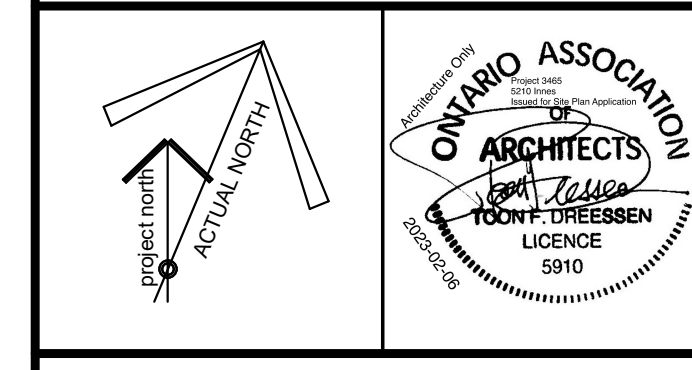
2 MEZZANINE  
SCALE: 1: 200

1 01-G-FLR  
SCALE: 1: 200

**GENERAL NOTES**

- DO NOT SCALE DRAWINGS. ONLY FIGURED DIMENSIONS ARE TO BE USED. WHERE DOUBT EXISTS: FILE REQUEST FOR INTERPRETATION AND REQUEST CLARITY.
- IT IS THE RESPONSIBILITY OF THE GENERAL CONTRACTOR TO VERIFY DIMENSIONS ON SITE. REPORT DISCREPANCIES TO THE ARCHITECT PROMPTLY.
- GENERAL CONTRACTOR TO TAKE INTO ACCOUNT CONSTRUCTION TOLERANCE. GENERAL CONTRACTOR TO COORDINATE THE WORK OF DIFFERENT TRADES TO COMPLY WITH DESIGN INTENT.
- ALL WORK DESCRIBED IN THESE DRAWINGS AND SPECIFICATIONS ARE TO COMPLY WITH THE CURRENT EDITION OF THE ONTARIO BUILDING CODE (2010) INCLUDING MOST RECENT AMENDMENTS.
- DRAWINGS AND SPECIFICATIONS ARE COMPLEMENTARY AND ARE TO BE READ TOGETHER.

**COPYRIGHT**  
THIS DRAWING IS AN INSTRUMENT OF SERVICE AND IS PROTECTED BY COPYRIGHT AND IS THE SOLE PROPERTY OF DREESSEN CARDINAL ARCHITECTS INC. COPIES, INCLUDING ELECTRONIC COPIES, MAY ONLY BE USED FOR THE PURPOSE INTENDED. FOR THE SINGLE PROJECT FOR WHICH THEY ARE ISSUED AND MAY NOT BE OFFERED FOR SALE OR TRANSFER WITHOUT THE EXPRESS WRITTEN PERMISSION OF THE ARCHITECT.



**ISSUE RECORD**

NO.	DESCRIPTION	DATE
1	ISSUE FOR REVIEW	2022-05-19
2	ISSUE FOR SPA	2023-02-06

**CLIENT**  
**DYMON SELF-STORAGE**  
2-1830 WALKLEY ROAD, OTTAWA, ON  
(T) 613-247-0888

**CONSULTANTS**  
**FOTENN PLANNING + DESIGN**  
396 COOPER STREET, SUITE 300, OTTAWA ON  
PLANNING & URBAN DESIGN  
(T) 613-730-5709

**D B GRAY ENGINEERING INC.**  
700 LONG POINT CIR, GLOUCESTER, ON.  
CIVIL ENGINEER  
(T) 613-425-8044

**TACT ARCHITECTURE INC.**  
660R COLLEGE STREET (REAR LANE) TORONTO ON.  
DESIGN ARCHITECT  
(T) 416-516-1949

**BRUMER ENGINEERING SERVICES LTD**  
25-120 WEST BEAVER CREEK ROAD, RICHMOND HILL ON  
MECHANICAL CONSULTANTS  
(T) 905-771-7798

**HUDSON ENGINEERING**  
2901 STEELES AVE W UNIT 26, TORONTO, ON  
ELECTRICAL CONSULTANTS  
(T) 416-663-5470

**D+M STRUCTURAL LTD.**  
110-333 PRESTON ST. OTTAWA, ON  
STRUCTURAL CONSULTANTS  
(T) 613 651-9490



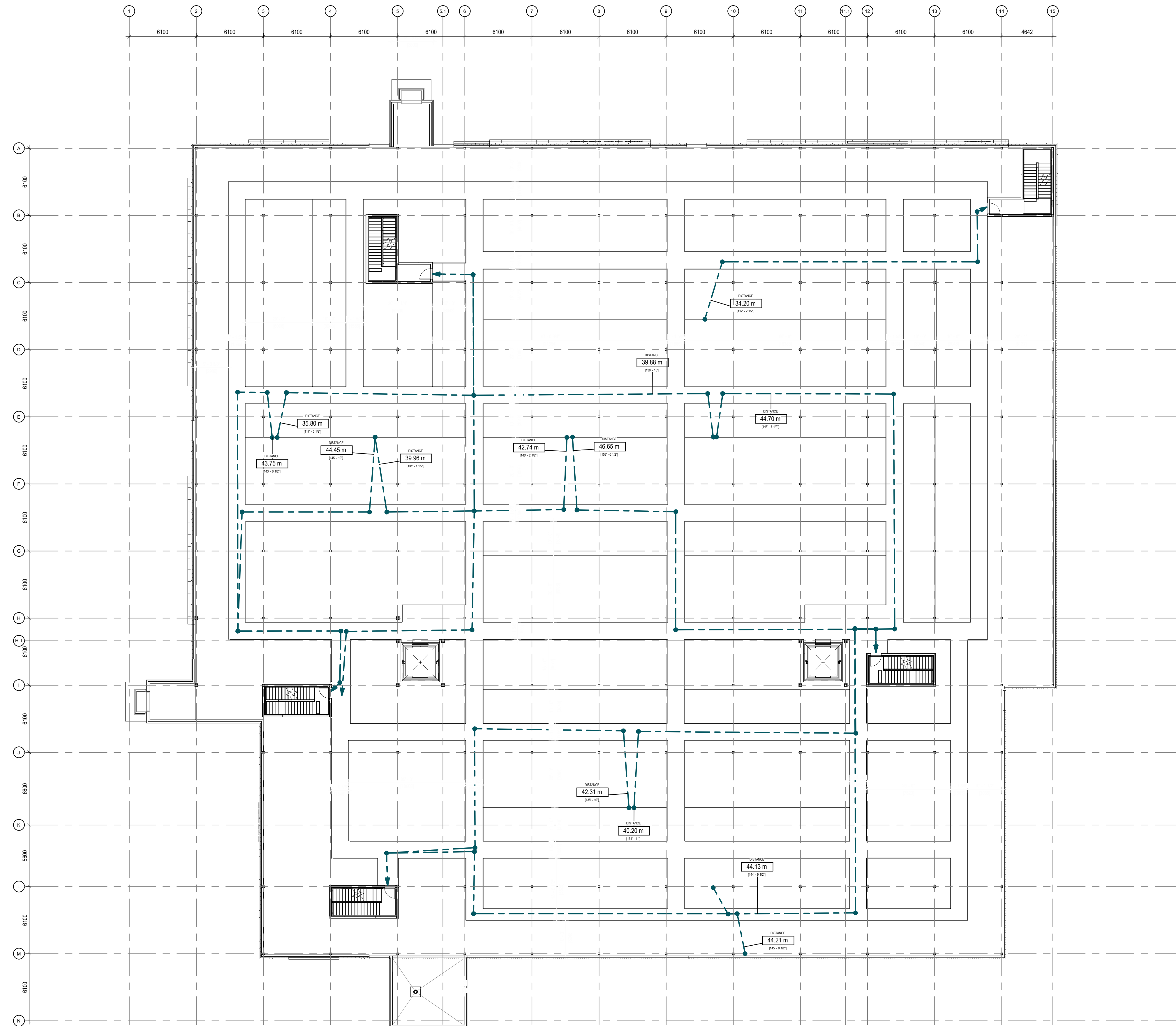
**A GROUP OF ARCHITECTS**  
201-1339 WELLINGTON ST. W. OTTAWA ON K1Y 3B8  
WWW.ARCHITECTSDCA.COM 613.725.2294

**PROJECT TITLE**  
DYMON 5210 INNES ROAD

**DRAWING TITLE**  
GROUND FLOOR PLAN

DATE	DRAWN	JOB NO.	DRAWING NO.
APRIL 2022	SD	3465	A202
SCALE	REVIEWED		
1: 200	TD		

**ARCHITECTURAL**

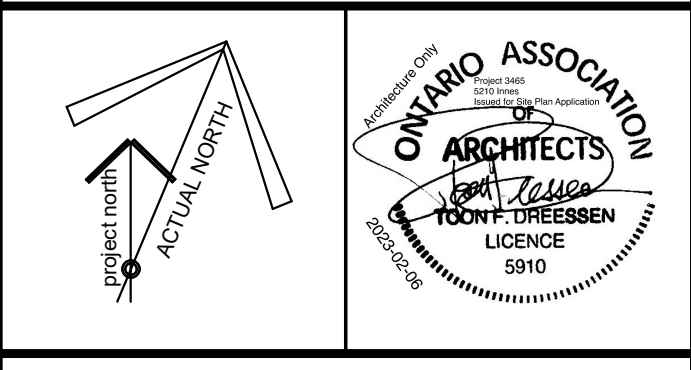


1 2ND-3RD-FLR  
A203 SCALE: 1:200

**GENERAL NOTES**

- DO NOT SCALE DRAWINGS. ONLY FIGURED DIMENSIONS ARE TO BE USED. WHERE DOUBT EXISTS, FILE REQUEST FOR INTERPRETATION AND REQUEST CLARITY.
- IT IS THE RESPONSIBILITY OF THE GENERAL CONTRACTOR TO VERIFY DIMENSIONS ON SITE. REPORT DISCREPANCIES TO THE ARCHITECT PROMPTLY.
- GENERAL CONTRACTOR TO TAKE INTO ACCOUNT CONSTRUCTION TOLERANCE. GENERAL CONTRACTOR TO COORDINATE THE WORK OF DIFFERENT TRADES TO COMPLY WITH DESIGN INTENT.
- ALL WORK DESCRIBED IN THESE DRAWINGS AND SPECIFICATIONS ARE TO COMPLY WITH THE CURRENT EDITION OF THE ONTARIO BUILDING CODE (2010) INCLUDING MOST RECENT AMENDMENTS.
- DRAWINGS AND SPECIFICATIONS ARE COMPLEMENTARY AND ARE TO BE READ TOGETHER.

**COPYRIGHT**  
THIS DRAWING IS AN INSTRUMENT OF SERVICE AND IS PROTECTED BY COPYRIGHT AND IS THE SOLE PROPERTY OF DREESSEN CARDINAL ARCHITECTS INC. COPIES, INCLUDING ELECTRONIC COPIES, MAY ONLY BE USED FOR THE PURPOSE INTENDED, FOR THE SINGLE PROJECT FOR WHICH THEY ARE ISSUED AND MAY NOT BE OFFERED FOR SALE OR TRANSFER WITHOUT THE EXPRESS WRITTEN PERMISSION OF THE ARCHITECT.



**ISSUE RECORD**

NO.	DESCRIPTION	DATE
1	ISSUE FOR REVIEW	2022-05-19
2	ISSUE FOR SPA	2023-02-06

**CLIENT**  
**DYMON SELF-STORAGE**

2-1830 WALKLEY ROAD, OTTAWA, ON  
(T) 613-247-0888

**CONSULTANTS**  
**FOTENN PLANNING + DESIGN**

396 COOPER STREET, SUITE 300, OTTAWA ON  
PLANNING & URBAN DESIGN  
(T) 613-730-5709

**D B GRAY ENGINEERING INC.**

700 LONG POINT CIR, GLOUCESTER, ON.  
CIVIL ENGINEER  
(T) 613-425-8044

**TACT ARCHITECTURE INC.**

660R COLLEGE STREET (REAR LANE) TORONTO ON.  
DESIGN ARCHITECT  
(T) 416-516-1949

**BRUMAR ENGINEERING SERVICES LTD**

25-120 WEST BEAVER CREEK ROAD, RICHMOND HILL ON  
MECHANICAL CONSULTANTS  
(T) 905-771-7798

**HUDSON ENGINEERING**

2901 STEELES AVE W UNIT 26, TORONTO, ON  
ELECTRICAL CONSULTANTS  
(T) 416-663-5470

**D+M STRUCTURAL LTD.**

110-333 PRESTON ST, OTTAWA, ON  
STRUCTURAL CONSULTANTS  
(T) 613 651-9490



**A GROUP OF ARCHITECTS**  
201-1339 WELLINGTON ST. W. OTTAWA ON K1Y 3B8  
WWW.ARCHITECTSDCA.COM 613.725.2294

PROJECT TITLE  
**DYMON 5210 INNES ROAD**

DRAWING TITLE  
**SECOND & THIRD FLOOR PLAN**

DATE	DRAWN	JOB NO.	DRAWING NO.
APRIL 2022	SD	3465	A203
SCALE	REVIEWED		
1:200	TD		

ARCHITECTURAL