



ELECTRICAL LEGEND	
SYMBOL	DESCRIPTION
LINE TYPES	
	NEW WORK
	WORK TO BE DEMOLISHED, OR REMOVED
	EXISTING MATERIAL/EQUIPMENT/SERVICES TO REMAIN
	FUTURE WORK (NOT IN SCOPE)
	EXTENTS OF FIRE ALARM ZONE, WET LOCATION, OR OTHER AREA AS NOTED ON PLANS
ABBREVIATIONS	
E	EXISTING TO REMAIN
R	EXISTING TO BE DEMOLISHED/REMOVED
ER	EXISTING IN RELOCATED POSITION
RR	REMOVE AND RELOCATE
C	CEILING MOUNTED CONNECTION
W	WALL MOUNTED CONNECTION
F	FLOOR MOUNTED CONNECTION
CL	CENTRE LINE
AFF	ABOVE FINISHED FLOOR
AFG	ABOVE FINISHED GRADE
O/C	OVER COUNTER
U/C	UNDER CABINET
U/F	UNDER RAISED FLOOR
CCT	CIRCUIT
CTE	CONNECT TO EXISTING
AFCI	ARC FAULT CIRCUIT INTERRUPTER
GFCI	GROUND FAULT CIRCUIT INTERRUPTER
GFI	GROUND FAULT INTERRUPTER
IG	ISOLATED GROUND
TL	TWIST LOCK
TR	TAMPER RESISTANT
WG	WIRE GUARD
WP	WEATHER PROOF
EX	EXPLOSION PROOF
HZ	HAZARDOUS LOCATION
R/I	ROUGH-IN ONLY
NIC	NOT IN CONTRACT
SIM	SIMILAR TO
TYP.	TYPICAL
ABBREVIATIONS - CODES AND STANDARDS	
OBC	ONTARIO BUILDING CODE
OESC	ONTARIO ELECTRICAL SAFETY CODE
OFC	ONTARIO FIRE CODE
ABBREVIATIONS - CEILING TYPES	
ACT	ACOUSTIC CEILING TILE (T-BAR)
EXP	EXPOSED CEILING
OWSJ	OPEN WEB STEEL JOISTS
PCC	PAINTED OR POPCORN CEILING ON EXPOSED CONCRETE
WD	WOOD CEILING
ANNOTATIONS	
CL	CLOSET
WR	WASHROOM
PLUMBING	
PTP	ELECTRONIC TRAP PRIMER
PSC	PLUMBING SENSOR CONTROL (TOUCHLESS FAUCETS)
HVAC	
○	THERMOSTAT OR TEMPERATURE SENSOR
□	TIMER CONTROL
BBH	ELECTRIC BASEBOARD HEATER (BBH)
FFH	FORCED FLOW HEATER
ERV	ENERGY RECOVERY VENTILATOR
HRU	HEAT RECOVERY UNIT
MUA	MAKE-UP AIR UNIT
CONDUIT AND BOXES	
	CONDUIT WITH END BUSHING
	CONDUIT UP
	CONDUIT DOWN
	CONDUIT CONTINUES
JB	JUNCTION BOX
PR	PULL BOX
HH	HAND HOLE
CONNECTIONS TO EQUIPMENT	
DW	DISHWASHER
FR	FRIDGE
MW	MICROWAVE
HD	HAND DRYER. ALLOW UP TO 208V-1PH-20A
⊙	1-PHASE DIRECT CONNECTION OUTLET AS NOTED.
⊕	3-PHASE DIRECT CONNECTION OUTLET AS NOTED.
THIS LEGEND IS GENERIC. ALL SYMBOLS LISTED MAY NOT BE APPLICABLE FOR THIS PROJECT. REFER TO FLOOR PLANS TO DETERMINE USED DEVICES AND EQUIPMENT.	

ELECTRICAL LEGEND	
SYMBOL	DESCRIPTION
H	SYSTEM FURNITURE WALL FEED FOR POWER AND TELECOMMUNICATIONS UNLESS NOTED OTHERWISE. 'C' ADJACENT TO SYMBOL DENOTES CEILING FEED, 'F' ADJACENT TO SYMBOL DENOTES FLOOR FEED.
W	ADJACENT TO 3-PHASE DIRECT CONNECTION. DENOTES WALL SYSTEM FURNITURE FEED FOR POWER AND COMMUNICATIONS.
⊙	CONNECTION TO SINGLE PHASE MOTOR, HP (KW) AS NOTED. PROVIDE LOCAL DISCONNECT.
⊕	THREE PHASE MOTOR, HP (KW) AS NOTED. PROVIDE LOCAL DISCONNECT.
LIGHTING CONTROLS REFER TO SPECIFICATIONS AND RESPECTIVE SCHEDULES FOR EXACT REQUIREMENTS	
⊕	SWITCH OR OTHER USER INTERFACE DEVICE AS DESCRIBED ON LIGHTING CONTROLS SCHEDULE.
3W	3-WAY SWITCH
DIM	ADJACENT TO SWITCH, DENOTES DIMMING SWITCH.
K	ADJACENT TO SWITCH, DENOTES KEY SWITCH.
T	ADJACENT TO SWITCH, DENOTES COUNTDOWN TIMER SWITCH
AT	ADJACENT TO SWITCH, DENOTES ASTRONOMICAL TIMER SWITCH
DS	ADJACENT TO SWITCH, DENOTES DOOR SWITCH
PIR	PASSIVE INFRARED SENSOR
DT	DUAL TECHNOLOGY SENSOR
UT	ULTRASONIC SENSOR
OS	SENSOR (TYPE UNKNOWN)
M	ADJACENT TO SWITCH, DENOTES MASTER CONTROL FOR ALL LUMINAIRES IN A ROOM OR SPACE, OR AS NOTED.
⊕	WALL MOUNTED SWITCH/OCCUPANCY SENSOR. PIR DENOTES PASSIVE INFRARED, DT DENOTES DUAL PASSIVE INFRARED/ULTRASONIC, LINE VOLTAGE TO SUIT CONTROLLED CIRCUIT, OR AS NOTED.
RP	RELAY PANEL
PP	POWER PACK
SC	SCENE CONTROLLER
⊙	PHOTOCELL SENSOR.
⊙	PHOTOCELL SENSOR. 'PC' DENOTES CLOSED LOOP PHOTOCELL CONTROL, 'PO' DENOTES OPEN LOOP PHOTOCELL CONTROL.
⊙	CEILING MOUNTED OCCUPANCY SENSOR. PIR DENOTES PASSIVE INFRARED, UT DENOTES ULTRASONIC (OR MICROPHONIC), DT DENOTES DUAL TECHNOLOGY. 'OS' DENOTES UNKNOWN TECHNOLOGY.
⊕	WALL MOUNTED OCCUPANCY SENSOR.
DISTRIBUTION EQUIPMENT	
⊕	TRANSFORMER, PLAN VIEW
⊕	SURFACE MOUNTED LIGHTING AND RECEPTACLE PANELBOARD
⊕	RECESSED RECEPTACLE AND LIGHTING PANELBOARD
⊕	DISTRIBUTION PANELBOARD
⊕	EMERGENCY LIGHTING BATTERY UNIT, WITH AND WITHOUT HEADS
⊕	FUSED DISCONNECT SWITCH
⊕	CONTACTOR
⊕	LOOSE STARTER. COORDINATE STARTING CHARACTERISTIC WITH EQUIPMENT REQUIREMENTS.
⊕	COMBINATION STARTER.
⊕	THREE PHASE DIRECT CONNECTION WITH DISCONNECT.
⊕	SINGLE PHASE DIRECT CONNECTION WITH DISCONNECT.
VFD	ADJACENT TO STARTER, DENOTES VARIABLE FREQUENCY DRIVE
POWER RECEPTACLES AND BOXES	
⊕	120V U-GROUND DUPLEX RECEPTACLE.
⊕	120V U-GROUND DUPLEX RECEPTACLE MOUNTED ABOVE COUNTER TOP OR AS INSTRUCTED ON SITE.
⊕	120V U-GROUND 20A DUPLEX RECEPTACLE.
⊕	120V U-GROUND DUPLEX RECEPTACLE MOUNTED ABOVE COUNTER TOP OR AS INSTRUCTED ON SITE.
⊕	120V U-GROUND DUPLEX RECEPTACLE - AUTOMATICALLY CONTROLLED (ASHRAE 90.1-2013, 8.4.2).
⊕	120V U-GROUND 20A DUPLEX RECEPTACLE - AUTOMATICALLY CONTROLLED (ASHRAE 90.1-2013, 8.4.2).
⊕	120V U-GROUND DUPLEX RECEPTACLE - HALF OF RECEPTACLE AUTOMATICALLY CONTROLLED (ASHRAE 90.1-2013, 8.4.2).
⊕	MANUALLY CONTROLLED SPLIT RECEPTACLE
⊕	120V U-GROUND QUAD RECEPTACLE.
⊕	INDICATES RECEPTACLE COMPLETE WITH ONE TYPE A AND ONE TYPE C USB CHARGING PORTS.
⊕	14-30R RECEPTACLE FOR LAUNDRY DRYER, OR OTHER RECEPTACLE AS NOTED.
⊕	14-50R RECEPTACLE FOR ELECTRONIC RANGE, OR OTHER RECEPTACLE AS NOTED. PROVIDE 40A/2P BREAKER TO SUIT.
THIS LEGEND IS GENERIC. ALL SYMBOLS LISTED MAY NOT BE APPLICABLE FOR THIS PROJECT. REFER TO FLOOR PLANS TO DETERMINE USED DEVICES AND EQUIPMENT.	

ELECTRICAL LEGEND	
SYMBOL	DESCRIPTION
⊕	SPECIAL RECEPTACLE. VERIFY OUTLET REQUIREMENTS PRIOR TO ROUGH-IN.
⊕	SPECIAL RECEPTACLE. VERIFY OUTLET REQUIREMENTS PRIOR TO ROUGH-IN.
⊕	FLOOR RECEPTACLE OR RECEPTACLE IN FLOOR BOX (POWER ONLY).
⊕	SERVICE POLE. PROVIDE POWER TO JUNCTION BOX IN CEILING SPACE ABOVE. DEVICES ON POLE AS NOTED ON PLANS.
FB1	ADJACENT TO FLOOR RECEPTACLE. DENOTES FLOOR BOX TYPE
•	ADJACENT TO DEVICE. DENOTES DEVICE CONNECTED TO EMERGENCY POWER
LIGHTING FIXTURES SYMBOLS IN ACCORDANCE WITH IES DS-3-00 AND IES HB-10-11 WHERE NOT DETAILED OTHERWISE HERE REFER TO LIGHTING FIXTURE SCHEDULE FOR FURTHER DETAILS AND EXACT FIXTURE REQUIREMENTS.	
⊕	LINEAR LUMINAIRE, SURFACE MOUNTED TO CEILING
⊕	RECESSED DOWNLIGHTS, CONNECTED TO EMERGENCY OR NIGHT LIGHT CIRCUIT
⊕	ROUND SUSPENDED LUMINAIRE
⊕	WALL SCONCE OR OTHER WALL MOUNTED LUMINAIRES.
EM	CONNECTED TO EMERGENCY NIGHT LIGHT CIRCUIT (24 HOUR)
CE	CONNECTED TO EMERGENCY CIRCUIT. PROVIDE CUL 924 LISTED SHUNT TRIP RELAY OR EQUAL TO PERMIT CONTROL OF LUMINAIRE WITH ZONING BASED ON LOCAL LIGHTING CONTROLS.
NL	LUMINAIRE CONNECTED TO NON-EMERGENCY NIGHT LIGHT CIRCUIT (24 HOUR)
A, B, Z1, Z2, ETC.	DENOTES ZONING/CIRCUITING ASSIGNMENTS FOR LUMINAIRES AND CONTROLS IN THE SAME SPACE.
EMERGENCY LIGHTING REFER TO EMERGENCY LIGHTING FIXTURE SCHEDULE FOR EXACT FIXTURE REQUIREMENTS.	
⊕	CEILING OR WALL MOUNTED ILLUMINATED EXIT SIGN. SHADED AREA INDICATES ILLUMINATED FACE. PROVIDE DIRECTIONAL ARROWS AS INDICATED ON PLANS.
⊕	CEILING OR WALL MOUNTED ILLUMINATED EXIT SIGN. SHADED AREA INDICATES ILLUMINATED FACE. PROVIDE DIRECTIONAL ARROWS AS INDICATED ON PLANS.
SL	DENOTES 'SELF-LUMINOUS' EXIT SIGN
PL	PHOTOLUMINOUS EXIT SIGN
⊕	EMERGENCY LIGHTING BATTERY UNIT, WITH AND WITHOUT HEADS
⊕	ONE AND TWO HEAD WALL MOUNTED EMERGENCY LIGHTING REMOTE UNITS.
⊕	ONE AND TWO HEAD CEILING MOUNTED EMERGENCY LIGHTING REMOTE UNITS.
⊕	RECESSED EMERGENCY REMOTE HEAD.
EM	DENOTES 'EMERGENCY'
CCT	CORRELATED COLOUR TEMPERATURE
CRI	COLOUR RENDERING INDEX
EXTERIOR LIGHTING	
⊕	ARM MOUNTED LUMINAIRE ON POLE. DIRECTIONAL ARROW, WHERE INDICATED DENOTES PRIMARY LUMEN ORIENTATION.
⊕	POST TOP LUMINAIRE ON POLE. DIRECTIONAL ARROW, WHERE INDICATED DENOTES PRIMARY LUMEN ORIENTATION.
⊕	LIGHTING BOLLARD. DIRECTIONAL ARROW, WHERE INDICATED DENOTES PRIMARY LUMEN ORIENTATION.
⊕	GROUND MOUNTED FLOOD LIGHT
TELECOMMUNICATIONS	
H	SYSTEM FURNITURE FEED.
W	ADJACENT TO SYSTEM FURNITURE FEED, DENOTES WALL SYSTEM FURNITURE FEED FOR COMMUNICATIONS.
F	ADJACENT TO SYSTEM FURNITURE FEED, DENOTES FLOOR SYSTEM FURNITURE FEED FOR COMMUNICATIONS.
C	ADJACENT TO SYSTEM FURNITURE FEED, DENOTES CEILING SYSTEM FURNITURE FEED FOR COMMUNICATIONS (SERVICE POLE OR DROP CORD AS NOTED).
CABLE TRAY (LADDER TYPE)	
CABLE TRAY (BASKET TYPE)	
⊕	WALL MOUNTED DATA (D) OR VOICE (V) OUTLET. PROVIDE 1V AND 1U UNLESS NOTED OTHERWISE.
⊕	WALL MOUNTED VOICE (TELEPHONE) OUTLET. PROVIDE 1V UNLESS NOTED OTHERWISE.
THIS LEGEND IS GENERIC. ALL SYMBOLS LISTED MAY NOT BE APPLICABLE FOR THIS PROJECT. REFER TO FLOOR PLANS TO DETERMINE USED DEVICES AND EQUIPMENT.	

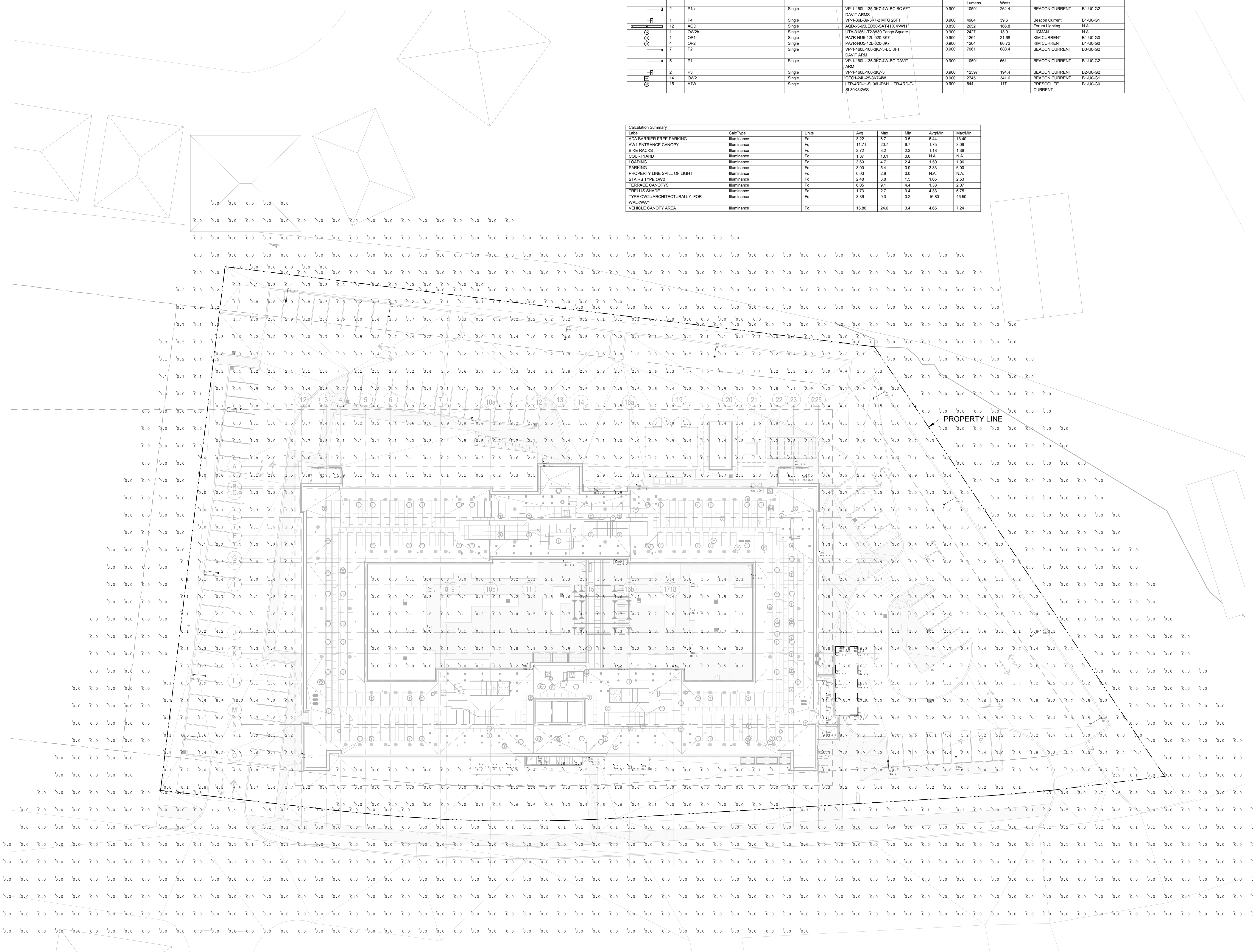
ELECTRICAL LEGEND	
SYMBOL	DESCRIPTION
⊕	WALL MOUNTED DATA OUTLET. PROVIDE 1D UNLESS NOTED OTHERWISE.
⊕	RESIDENT ROOM TELEPHONE (RES1) OR TELEVISION (RES2) OUTLET TERMINATED AT P3000 BOX IN RESIDENT ROOMS
⊕	VOICE, DATA, OR TV OUTLET AS DESCRIBED ABOVE. MOUNTED ABOVE COUNTER TOP OR AS INSTRUCTED ON SITE.
B	ADJACENT TO COMMUNICATIONS OUTLET, INDICATES BOX TYPE.
HDMI	HDMI OUTLET.
AV	AUDIO VIDEO GANG, AS NOTED.
WIFI	WIRELESS ACCESS POINT (WIFI)
⊕	AUDIO VISUAL SYSTEM SPEAKER, CEILING MOUNTED.
⊕	AUDIO VISUAL SYSTEM SPEAKER, WALL MOUNTED.
⊕	PUBLIC ADDRESS SYSTEM SPEAKER, CEILING MOUNTED.
⊕	PUBLIC ADDRESS SYSTEM SPEAKER, WALL MOUNTED HORN SPEAKER.
⊕	PUBLIC ADDRESS SYSTEM HANDSET
⊕	PUBLIC ADDRESS SYSTEM ADMIN CONTROL CONSOLE
⊕	PUBLIC ADDRESS SPEAKER VOLUME CONTROL SWITCH.
⊕	INTERCOM
IDC	INSULATION DISPLACEMENT CONNECTION
⊕	CLOCK
⊕	GPS CLOCK SYSTEM MASTER TRANSMITTER
⊕	GPS CLOCK SYSTEM GPS RECEIVER
⊕	GPS CLOCK SYSTEM SATELLITE TRANSMITTER (REPEATER)
⊕	GPS CLOCK SYSTEM RECEIVER SWITCH
⊕	INTERCOM MASTER STATION
⊕	DOOR RELEASE BUTTON
⊕	ACCESS CONTROL AND DOOR HARDWARE
⊕	CARD READER
⊕	DOOR ALARM SOUNDER
⊕	DOOR CONTACT
⊕	OVERHEAD DOOR CONTACT
⊕	ELECTRIC LATCH
⊕	ELECTRIC STRIKE
⊕	ELECTRIC POWER TRANSFER CABLE
⊕	POWER TRANSFER HINGE
⊕	KEY SWITCH
⊕	ELECTROMAGNETIC LOCK
⊕	MOTORIZED LATCH RETRACTION. PROVIDE 120 V. REQUEST TO EXIT SENSOR
⊕	MUSHROOM HEAD PUSH BUTTON FOR 'REQUEST TO EXIT' MAGLOCK RELEASE, OR OTHER PUSH BUTTON AS INDICATED
⊕	BARRIER FREE DOOR OPERATOR PUSH BUTTON
⊕	BARRIER FREE DOOR OPERATOR PUSH BUTTON
⊕	TOUCHLESS 'WAVE SWITCH' FOR DOOR OPERATOR CONTROL
⊕	DOOR BELL CW SOUNDER AND STROBE
⊕	DOOR BELL (SOUNDER ONLY)
INTRUSION DETECTION	
⊕	GLASS BREAK (GB)
⊕	MOTION DETECTOR (MD)
⊕	KEYPAD (KP)
VIDEO SURVEILLANCE	
⊕	CCTV CAMERA
C/P	CCTV CAMERA, CEILING OR POLE MOUNTED
⊕	CCTV CAMERA, WALL MOUNTED
PTZ	PAN-TILT-ZOOM
DURESS SYSTEM	
⊕	DURESS BUTTON (MOUNTED ON UNDERSIDE OF TABLETOP)
⊕	WALL MOUNTED DURESS BUTTON WITH POLYCARBONATE ANTI-TAMPER COVER
⊕	DURESS SYSTEM STROBE LIGHT
FIRE DETECTION AND ALARM - GENERAL	
CACF	CENTRAL ALARM AND CONTROL FACILITY
FAFP	FIRE ALARM CONTROL PANEL
FAAP	FIRE ALARM ANNUNCIATOR PANEL
FAAG	FIRE ALARM ACTIVE ANNUNCIATOR CW GRAPHIC
FAPG	FIRE ALARM PASSIVE GRAPHIC
DGP	DATA GATHERING PANEL
FAZ	FIRE ALARM ZONE
FSZ	FIRE ALARM SUPERVISORY ZONE
FDSPCP	FIRE DETECTION, SUPPRESSION, AND PRE-ACTION CONTROL PANEL.
FDSFCP	FIRE DETECTION AND SUPPRESSION CONTROL PANEL
⊕	FIRE ALARM PANEL (FACP, FAAP, FAMP) AS DENOTED ON PLANS
THIS LEGEND IS GENERIC. ALL SYMBOLS LISTED MAY NOT BE APPLICABLE FOR THIS PROJECT. REFER TO FLOOR PLANS TO DETERMINE USED DEVICES AND EQUIPMENT.	

ELECTRICAL LEGEND	
SYMBOL	DESCRIPTION
FIRE DETECTION - INITIATION DEVICES	
⊕	MANUAL PULL STATION (MPS)
LX	WHERE NOTED ADJACENT TO MANUAL PULL STATIONS, DENOTES MANUAL PULL STATION CW POLYCARBONATE (LEXAN) COVER.
WG	WHERE NOTED ADJACENT TO MANUAL PULL STATIONS, DENOTES PULL STATION CW WIRE GUARD COVER.
A	WHERE NOTED ADJACENT TO MANUAL PULL STATIONS, DENOTES MANUAL PULL STATION CW AUXILIARY CONTACT.
⊕	PHOTOELECTRIC SMOKE DETECTOR
⊕	SAME AS ABOVE, WALL MOUNTED
SA	WHEN ADJACENT TO PHOTOELECTRIC SMOKE DETECTOR, INDICATES RESIDENTIAL SMOKE ALARM
⊕	RESIDENTIAL SMOKE ALARM, 120 VOLT, COMPLETE WITH STROBE. FOR AREAS AS INDICATED ON PLANS BY 'OO', PROVIDE INTEGRAL CARBON MONOXIDE DETECTION.
⊕	SAME AS ABOVE, WALL MOUNTED
⊕	DUCT MOUNTED SMOKE DETECTOR
CO	CARBON MONOXIDE DETECTOR
VESDA	VERY EARLY SMOKE DETECTING APPARATUS
BSDT	BEAM SMOKE DETECTOR TRANSMITTER
BSDR	BEAM SMOKE DETECTOR RECEIVER (OR REFLECTOR)
ASD	ASPIRATING SMOKE DETECTOR
⊕	END OF LINE (EOL) DEVICE ON ZONE INITIATION OR SIGNAL CIRCUITS
⊕	HEAT DETECTOR - FIXED TEMPERATURE
⊕	SAME AS ABOVE, WALL MOUNTED
HT	ADJACENT TO HEAT DETECTOR, DENOTES 'HIGH TEMPERATURE'
⊕	HEAT DETECTOR - 94 DEGREES C (200 DEGREES F) FIXED TEMPERATURE
⊕	HEAT DETECTOR - 58 DEGREES C (135 DEGREES F) FIXED TEMPERATURE AND RATE OF RISE
⊕	LINEAR HEAT DETECTION CABLE
⊕	FLOW SWITCH
FIRE DETECTION AND ALARM - SUPERVISORY DEVICES	
⊕	LOW TANK LEVEL
⊕	LOSS OF POWER
⊕	LOW TEMPERATURE
⊕	PRESSURE SWITCH
⊕	SUPERVISED VALVE
⊕	SUPERVISED VALVE
FIRE DETECTION AND ALARM - SIGNALLING DEVICES	
⊕	FIRE ALARM BELL, WALL MOUNTED.
C	ADJACENT TO BELL OR HORN, DENOTES CEILING MOUNTED.
⊕	FIRE ALARM HORN
M	ADJACENT TO FIRE ALARM HORN, DENOTES 'MINI' HORN
⊕	FIRE ALARM HORN/STROBE, WALL MOUNTED.
⊕	FIRE ALARM EVACUATION SPEAKER, CEILING MOUNTED
⊕	FIRE ALARM EVACUATION SPEAKER, COMPLETE WITH STROBE LIGHT, CEILING MOUNTED
⊕	FIRE ALARM EVACUATION SPEAKER, WALL MOUNTED
⊕	FIRE ALARM EVACUATION SPEAKER COMPLETE WITH STROBE LIGHT, WALL MOUNTED
⊕	SILENCE SWITCH
⊕	FIRE ALARM WALL MOUNTED STROBE LIGHT
FIRE DETECTION AND ALARM - VOICE COMMUNICATION DEVICES	
⊕	EMERGENCY TELEPHONE FOR FIREFIGHTER'S USE
FIRE DETECTION AND ALARM - OTHER DEVICES	
⊕	END OF LINE DEVICE
⊕	WIRE GUARD
⊕	'DO NOT ENTER' SIGN
⊕	KEY SWITCH FOR FIREFIGHTER CONTROL OF ELEVATOR RECALL, OR AS NOTED
⊕	ISOLATOR MODULE
⊕	OUTPUT RELAY, FUNCTION AS INDICATED
⊕	CONTROL MODULE
⊕	MONITOR MODULE
⊕	MAGNETIC DOOR HOLDER AND RELEASING DEVICE ('HOLD OPEN')
⊕	FIRE SUPPRESSION RELEASING STATION
⊕	FIRE SUPPRESSION ABORT STATION
SINGLE LINE DIAGRAM	
⊕	AIR CIRCUIT BREAKER
⊕	MOLDED CASE CIRCUIT BREAKER
⊕	DISCONNECT (UNFUSED)
⊕	FUSE
⊕	METERING CABINET
⊕	TRANSFORMER
⊕	BUS DUCT
THIS LEGEND IS GENERIC. ALL SYMBOLS LISTED MAY NOT BE APPLICABLE FOR THIS PROJECT. REFER TO FLOOR PLANS TO DETERMINE USED DEVICES AND EQUIPMENT.	

ELECTRICAL LEGEND	
SYMBOL	DESCRIPTION
⊕	GENERATOR
⊕	AUTOMATIC TRANSFER SWITCH
⊕	AUTOMATIC TRANSFER SWITCH COMPLETE WITH SINGLE SIDED BYPASS ISOLATION
⊕	AUTOMATIC TRANSFER SWITCH COMPLETE WITH SINGLE SIDED BYPASS ISOLATION
⊕	AUTOMATIC TRANSFER SWITCH
C	CONTACTOR
DP	DISTRIBUTION PANELBOARD
LP	LIGHTING PANELBOARD
MCB	MOBILE CONNECTION BOX
MCC	MOTOR CONTROL CENTRE
MTS	MANUAL TRANSFER SWITCH
RP	RECEPTACLE PANELBOARD
SPD	SURGE PROTECTIVE DEVICE
STS	STATIC TRANSFER SWITCH
SWBD	SWITCHBOARD
TX	TRANSFORMER
UPS	UNINTERRUPTIBLE POWER SUPPLY
HEALTHCARE POWER SYMBOLS	
⊕	CEILING COLUMN TYPE ISOLATED POWER CENTRE WITH MECHANICAL AND ELECTRICAL SERVICES. 'A' DENOTES TYPE AS SCHEDULED ON DRAWINGS OR SPECIFICATIONS.
⊕	LINE ISOLATION MONITORING FOR ISOLATED POWER CENTRES.
⊕	SLAVE MODULE FOR ISOLATED POWER CENTRES. TYPES AS SCHEDULED ON DRAWINGS.
⊕	REMOTE ALARM PANEL FOR ADJACENT ISOLATED POWER CENTRE.
⊕	CENTRALLY LOCATED REMOTE ALARM STATION FOR ISOLATED POWER CENTRES. SEE SCHEDULE.
⊕	GROUND JACK TO FOR ISOLATED POWER SYSTEM
⊕	DOUBLE GROUND JACK FOR ISOLATED POWER SYSTEM
⊕	MEDICAL GAS ALARM PANEL
⊕	MEDICAL GAS CONTROL PANEL
⊕	MEDICAL SERVICE COLUMN FOR PATIENT BEDHEAD ARRANGEMENT. 'A' DENOTES TYPE AS SCHEDULED ON THE DRAWINGS OR SPECIFICATIONS.
⊕	POWER CONNECTION TO X-RAY VIEW BOXES
⊕	GPS CLOCK SYSTEM MASTER TRANSMITTER
⊕	GPS CLOCK SYSTEM GPS RECEIVER
⊕	GPS CLOCK SYSTEM SATELLITE TRANSMITTER (REPEATER)
⊕	GPS CLOCK SYSTEM RECEIVER SWITCH
⊕	MONITOR
⊕	DOCTOR'S DICTATION OUTLET
HEALTHCARE LIGHTING	
⊕	POWER CONNECTION TO OPERATING ROOM LIGHT
⊕	POWER CONNECTION TO EXAMINATION LIGHT
⊕	POWER OPERATING ROOM LIGHT CONTROL
NURSE CALL DEVICES	
⊕	STAFF PRESENCE STATION
⊕	INFRARED DETECTOR
⊕	NURSE CALL DOME LIGHT
⊕	'ZL', WHERE SHOWN DENOTES CORRIDOR ZONE LIGHT LIGHT CW CHIME
⊕	SINGLE BED NURSE CALL BED STATION
⊕	DUAL BED NURSE CALL STATION
⊕	NURSE CALL PATIENT WASHROOM EMERGENCY STATION - PULL CORD TYPE
⊕	N

Luminaire Schedule Symbol	Qty	Label	Arrangement	Description	LLF	Luminaire Lumens	Total Watts	(MANUFAC)	BUG Rating
□	2	P1a	Single	VP-1-160L-135-3K7-4W-BC BC FT DAVIT ARMS	0.900	10591	264.4	BEACON CURRENT	B1-UD-G2
□	1	P4	Single	VP-1-36L-39-3K7-2 MTG 26FT	0.900	4984	39.6	Beacon Current	B1-UD-G1
□	12	AC2D	Single	AGD-X-65L-ED30-SAT-H X-4-WH1	0.850	2652	166.8	Forum Lighting	N/A
○	1	OW2D	Single	LTA-1180L-12-W50 Tempo Square	0.900	2427	13.9	LIGMAN	N/A
○	1	OP1	Single	PATRNUS-12-420-3K7	0.900	1264	21.68	KIM CURRENT	B1-UD-G0
○	4	OP2	Single	PATRNUS-12-420-3K7	0.900	1264	86.72	KIM CURRENT	B1-UD-G0
□	7	P2	Single	VP-1-160L-100-3K7-3-BC-8FT DAVIT ARM	0.900	7061	680.4	BEACON CURRENT	B0-UD-G2
□	5	P1	Single	VP-1-160L-135-3K7-4W-BC DAVIT ARM	0.900	10591	661	BEACON CURRENT	B1-UD-G2
□	2	P3	Single	VP-1-160L-100-3K7-3	0.900	12597	194.4	BEACON CURRENT	B2-UD-G2
□	14	OW2	Single	GE01-24L-25-3K7-4W	0.900	2745	341.6	BEACON CURRENT	B1-UD-G1
○	15	ATW	Single	LTR-ARD-H-SL06L-DM1_LTR-ARD-T-SL30WSXVS	0.900	644	117	PRESCOLITE CURRENT	B1-UD-G0

Label	CalcType	Units	Avg	Max	Min	AvgMin	MaxMin
ADJ BARRIER FREE PARKING	Illuminance	Fc	3.22	6.7	0.5	6.44	13.40
AWI ENTRANCE CANOPY	Illuminance	Fc	11.71	20.7	6.7	1.75	3.09
BIKE RACKS	Illuminance	Fc	2.72	3.2	2.3	1.18	1.39
COURTYARD	Illuminance	Fc	1.37	10.1	0.0	N/A	N/A
LOADING	Illuminance	Fc	3.60	4.7	2.4	1.50	1.96
PARKING	Illuminance	Fc	3.00	5.4	0.9	3.33	6.00
PROPERTY LINE SPILL OF LIGHT	Illuminance	Fc	0.03	2.9	0.0	N/A	N/A
STAIRS TYPE OW2	Illuminance	Fc	2.48	3.8	1.5	1.65	2.53
TERRACE CANOPIES	Illuminance	Fc	6.05	9.1	4.4	1.38	2.07
TRELLIS SHADE	Illuminance	Fc	1.73	2.7	0.4	4.33	6.75
TYPE OW2-ARCHITECTURALLY FOR WALKWAY	Illuminance	Fc	3.36	9.3	0.2	16.80	46.50
VEHICLE CANOPY AREA	Illuminance	Fc	16.80	24.6	3.4	4.65	7.24



Montgomery Sisam Architects Inc.
 197 Spadina Avenue, Toronto, Ontario M5T 2C8 montgomerysisam.com
 Tel 416.364.8079 Fax 416.364.7723

MontgomerySisam

QUASAR
CONSULTING GROUP

250 ROWNTREE DAIRY RD, WOODBRIDGE, ON
 TEL: 905-507-0800
 WEB: WWW.QUASARCG.COM

FOR QUESTIONS REGARDING THIS PROJECT, PLEASE
 EMAIL: HC-21-054@QUASARCG.COM

3 2023-01-27 RE-ISSUED FOR SITE PLAN CONTROL APPLICATION & ZONING BY-LAW AMENDMENT - JANUARY 27, 2023 FB
 2 2022-08-19 RE-ISSUED FOR SITE PLAN CONTROL APPLICATION & ZONING BY-LAW AMENDMENT FB
 1 2021-11-19 ISSUED FOR SITE PLAN CONTROL APPLICATION FB

date: revision: by:

revisions



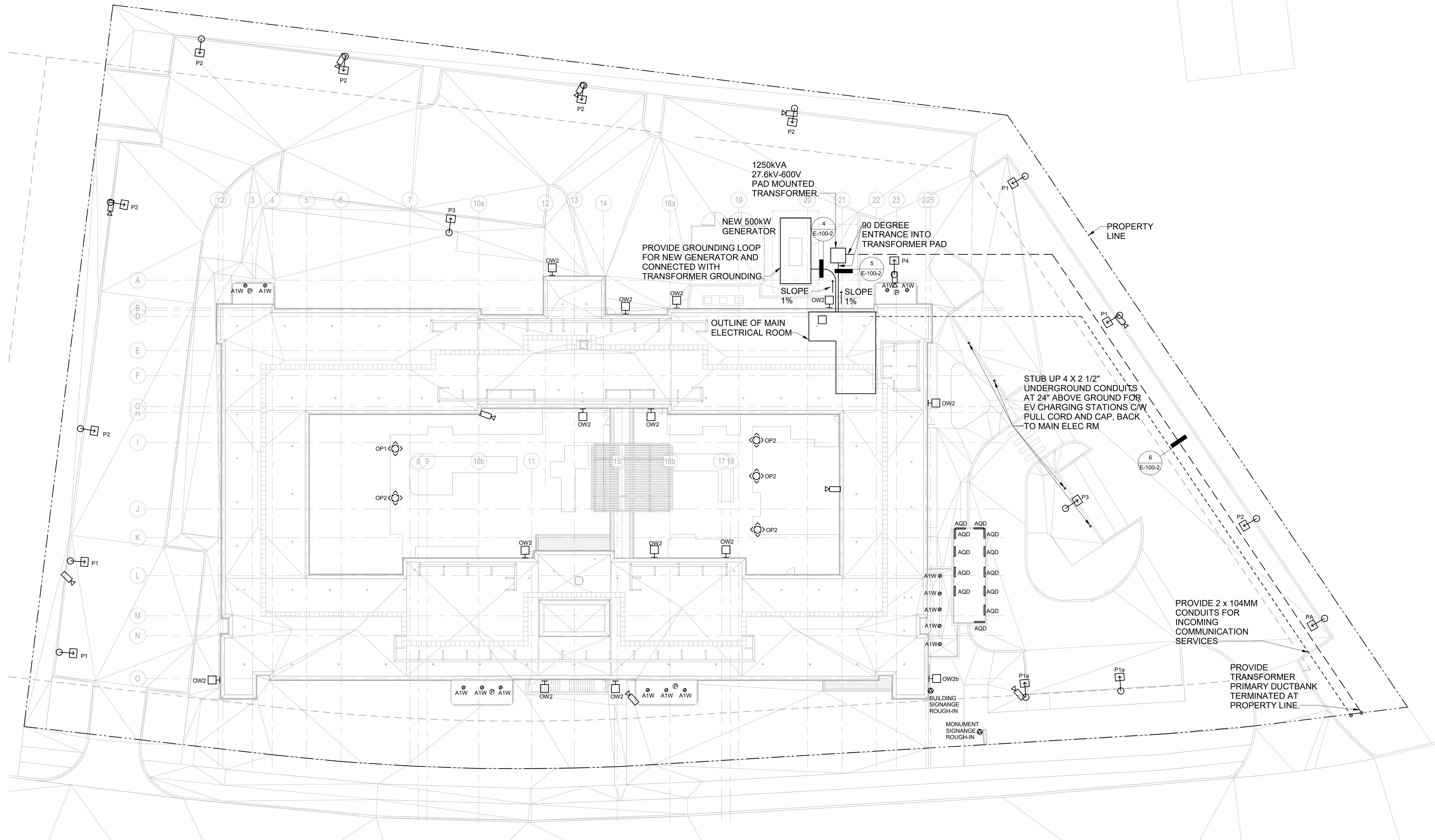
Arch Corp - Orleans

1161 OLD MONTREAL RD,
 ORLEANS ON, K4A 3N6

ELECTRICAL SITE PLAN - LIGHTING & PHOTOMETRICS

scale: 1 : 300
 drawn by: FB
 reviewed by: JG
 job number: HC-21-055
 plot date: 2022-12-16
 drawing number:

ELECTRICAL SITE PLAN - LIGHTING.
 SCALE: 1 : 300



1 ELECTRICAL SITE PLAN - POWER & SYSTEMS.
SCALE: 1 : 250

3	2023-01-27	RE-ISSUED FOR SITE PLAN CONTROL APPLICATION & ZONING BY LAW AMENDMENT - JANUARY 27, 2023	FB
2	2022-08-19	RE-ISSUED FOR SITE PLAN CONTROL APPLICATION & ZONING BY LAW AMENDMENT	FB
1	2021-11-19	ISSUED FOR SITE PLAN CONTROL APPLICATION	FB
#	date:	revision:	by:



All drawing and specifications are the property of the architect. The contractor shall verify all dimensions and information on site and report any discrepancy to architect before proceeding.

Arch Corp - Orleans

1161 OLD MONTREAL RD,
ORLEANS ON, K4A 3N6

ELECTRICAL SITE PLAN -
POWER & SYSTEMS

scale: 1 : 250
drawn by: FB
reviewed by: JG
job number: HC-21-055
plot date: 2022-12-16

drawing number:

E-100-1.

