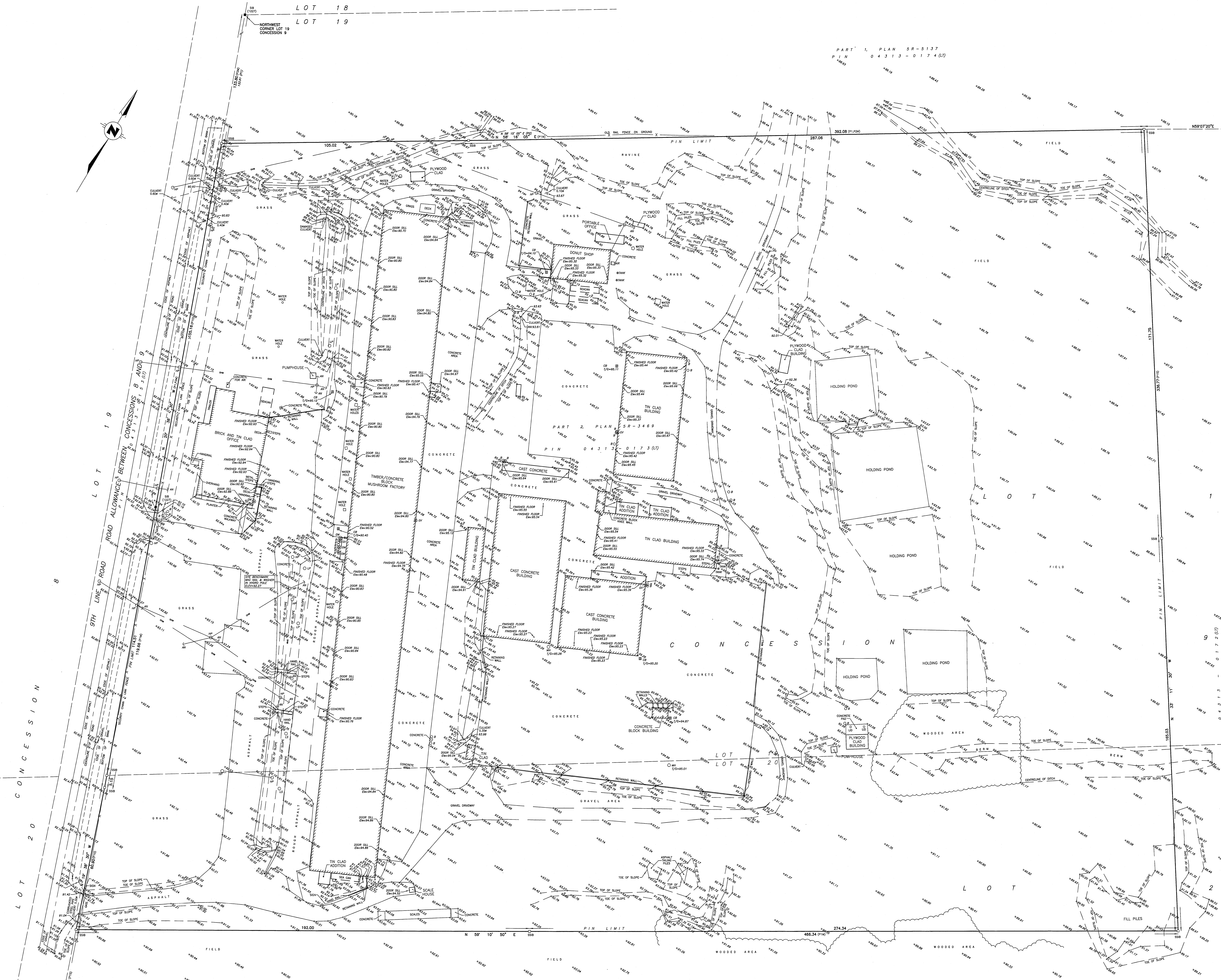


PART 1, PLAN SR-5137  
P.I.N. 04313-0174(LT)

PART 2, PLAN SR-3469  
P.I.N. 04313-0173(LT)

PART 1, PLAN SR-3469



**BEARING NOTE**  
BEARINGS ARE GRID, DERIVED FROM REAL TIME KINEMATIC SERVICE, MODIFIED TRANSVERSE MERCATOR (MTM) ZONE 9, CENTRAL MERIDIAN 78°30'00" WEST, CONTOUR INTERVAL (CIR) 2010. FOR BEARING COMPARISONS, A ROTATION OF 1°02'40" COUNTER-CLOCKWISE WAS APPLIED TO THE BEARINGS ON P1 AND P2.  
DISTANCES ARE GROUND AND CAN BE CONVERTED TO GRID BY MULTIPLYING BY THE COMBINED SCALE FACTOR OF 0.999987.

**METRIC:**  
DISTANCES AND ELEVATIONS SHOWN ON THIS PLAN ARE IN METRES AND CAN BE CONVERTED TO FEET BY DIVIDING BY 0.3048.

**BENCHMARKS:**  
SITE BENCHMARK MAG NAIL AND WASHER IN HYDRO POLE ELEVATION 92.27 METRES  
MONUMENT NO.: 0011970040  
TYPE/CONCRETE MONUMENT  
LOCATION: 500925.82E  
38389.30N  
GEOIDETIC ELEVATION: 83.290 METRES

**UTILITY NOTES**  
NO ATTEMPT WAS MADE TO LOCATE OR SHOW BURIED SERVICES HEREON.

**ELEVATION NOTE**  
ELEVATIONS SHOWN HEREON ARE GEOIDETIC (CGVD-1928-1978) AND ARE DERIVED FROM THE CANMET WGS NETWORK STATION OTTAWA ELEVATION=95.230.

**LEGEND:**

|        |                             |
|--------|-----------------------------|
| □      | DENOTES SURVEY MONUMENT SET |
| ■      | SURVEY MONUMENT FOUND       |
| SB     | STANDARD IRON BAR           |
| SSB    | SHORT STANDARD IRON BAR     |
| IB     | IRON BAR                    |
| IB#    | IRON BAR ROUND              |
| CC     | CUT CROSS                   |
| OU     | ORIGIN UNKNOWN              |
| WT     | WITNESS                     |
| M      | MEASURED                    |
| S      | SET                         |
| (1227) | L.E. ROSS, O.L.S.           |
| P1     | PLAN SR-3469                |
| P2     | PLAN SR-5137                |
| AR     | AIR CONDITIONER             |
| AN     | ANCHOR & CUT WIRE           |
| B      | BOLLARD                     |
| CB     | CATCH BASIN                 |
| C      | GAS MAN                     |
| GM     | GAS METER                   |
| GV     | GAS VALVE                   |
| HP     | HYDRO HOLE                  |
| MH     | MAN HOLE                    |
| LP     | LAMP POST                   |
| SA     | SAWTOOTH                    |
| ST     | STORM                       |
| SL     | STREET LIGHT                |
| T/G    | TOP OF GRATE                |
| OWW    | OVERHEAD UTILITY WIRES      |
| WV     | WATER VALVE                 |

**SURVEYOR'S CERTIFICATE**  
I CERTIFY THAT:  
(1) THIS SURVEY AND PLAN ARE CORRECT AND IN ACCORDANCE WITH THE SURVEYS ACT, THE SURVEYORS ACT AND LAND TITLES ACT, AND THE REGULATIONS MADE UNDER THEM.  
(2) THE SURVEY WAS COMPLETED ON THE 7th DAY OF DECEMBER, 2022

January 26, 2023  
DATE  
W.L. TREMBLAY  
ONTOARIO LAND SURVEYOR

THIS PLAN OF SURVEY RELATES TO AOLS PLAN SUBMISSION FORM NUMBER 2206001.

**Callon Dietz** INCORPORATED  
ONTOARIO LAND SURVEYORS  
CARLETON PLACE LONDON NORTH BAY  
info@callondietz.com callondietz.com

SURVEY BY: KF DRAWN BY: NJ FILE NO: 22-1773 PLAN NO: X-3309