

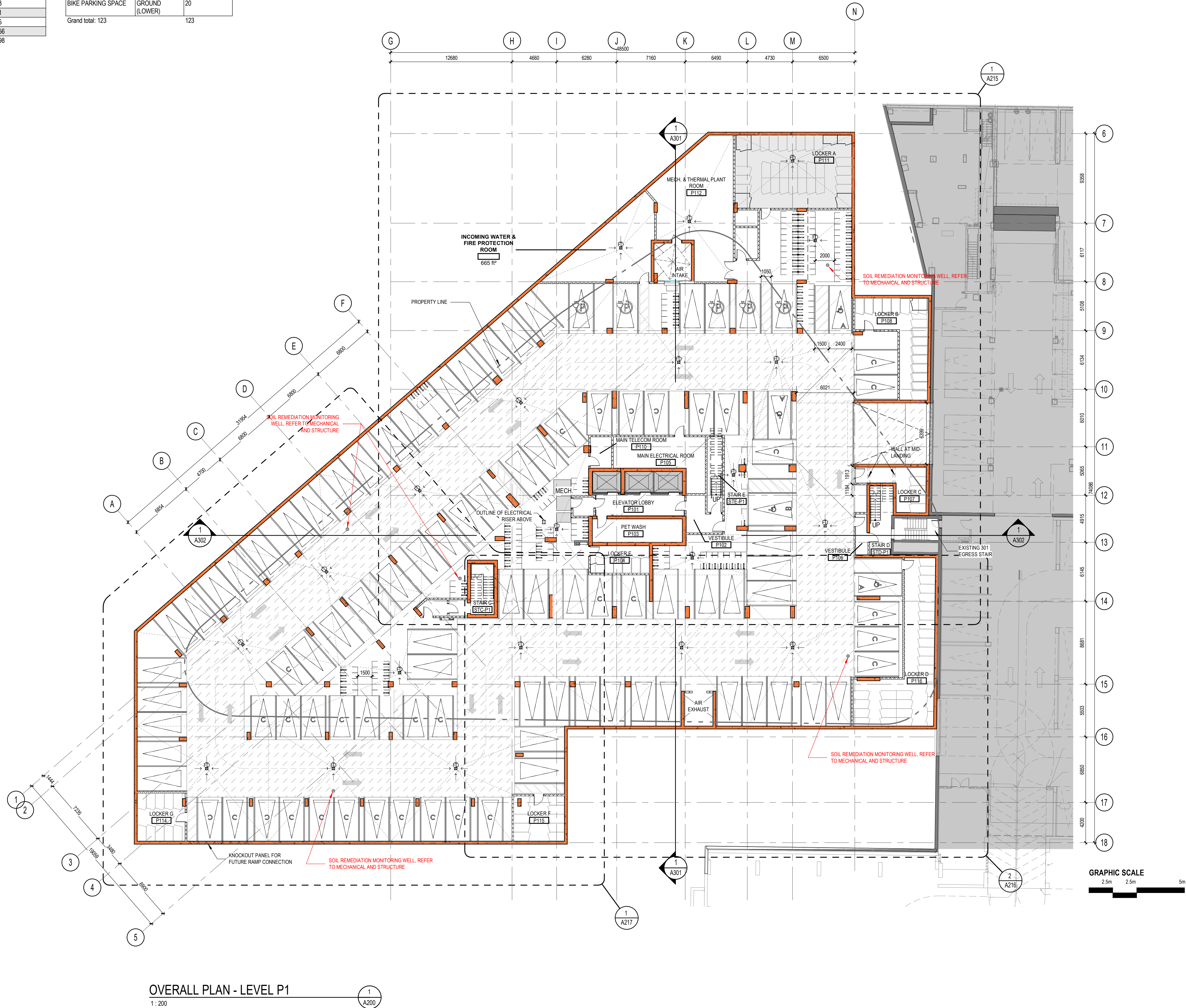
PARKING SCHEDULE - PARKING SPOTS		
Parking Category	Level	Count
COMPACT PARKING SPACE	LEVEL P1	33
TYPE A ACCESSIBLE PARKING SPACE	LEVEL P1	3
TYPE B ACCESSIBLE PARKING SPACE	LEVEL P1	1
TYPICAL PARKING (EVSE)	LEVEL P1	5
TYPICAL PARKING SPACE	LEVEL P1	56
Grand total:		98

PARKING SCHEDULE - BIKE SPOTS		
Parking Category	Level	Count
BIKE PARKING SPACE	LEVEL P1	103
BIKE PARKING SPACE	GROUND (LOWER)	20
Grand total:		123

PARKING LEGEND	
	PEDESTRIAN TRAFFIC HATCHING TO BE PAINTED (REFER TO SPEC SECTION 09 91 13)
	ZONE WITH A CLEAR HEIGHT OF 2100mm MIN.
	TRAFFIC MEMBRANE ON VEHICULAR CIRCULATION (REFER TO SPEC SECTION 07 18 00)
	PAINTED LOGO TO BE PROVIDED (REFER TO SPEC SECTION 09 91 13)
	ELECTRIC VEHICLE CHARGING STATION
	PAINTED PARKING SPACE (REFER TO SPEC SECTION 09 91 13)

**NOTES:**

- PARKING SPACES NUMBERING TO BE SPECIFIED/CONFIRMED BY CLIENT DURING CONSTRUCTION (REFER TO SPEC SECTION 09 91 13);
- BOTTOM OF COLUMNS TO BE PAINTED (REFER TO SPEC SECTION 09 91 13);
- ALL PARKING ARE 2.6m x 5.2m UNLESS INDICATED OR NOTED OTHERWISE;
- PARKING SPACES OUTLINE SHOWS THE MINIMUM SPACE REQUIRED. PAINTED PARKING LINES ARE TO BE ALIGNED WITH NEAREST COLUMNS AND BE CENTERED BETWEEN COLUMNS;
- ALL AREAS NOT NOMINATED AS MIN. 2.1m TO HAVE A CLEAR HEIGHT OF 2m MIN.



OVERALL PLAN - LEVEL P1  
1:200

**GENERAL NOTES**

1. These architectural documents are the exclusive property of HDR Architecture Associates and NEUF architect(e)s and cannot be used, copied or reproduced without written pre-authorization.
2. All dimensions which appear on the documents must be verified by the contractor before to start the work.
3. The architect must be notified of all errors, omissions and discrepancies between these documents and those of the others professionals.
4. The dimensions on these documents must be read and not measured.

Structural Engineer  
**RJC Engineers**  
1540 Carling Avenue, Suite 304  
Ottawa, ON, K1Z 8P9

Electrical & Mechanical Engineer  
**Smith + Andersen**  
1600 Carling Avenue, Suite 530  
Ottawa, ON, K1Z 1G3

Planning  
**Folenn Planning + Design**  
388 Cooper Street, Suite 300  
Ottawa, ON, K2P 2H7

Landscape Architect  
**CSW**  
319 McRae Avenue, Suite 502  
Ottawa, ON, K1Z 0S9

Civil  
**CIMA**  
240 Catherine Street, Unit 110  
Ottawa, ON, K2P 2G8

Architect  
**NEUF architect(e)s CANADA INC.**  
47 Clarence St, Suite 406, Ottawa, ON K1N 9K1



Client  
**DREAM UNLIMITED**  
30 Adelaide Street East  
Suite 301  
Toronto, ON, M5C 3H1  
T: (416) 365-3535

**ZIBI**  
6 Booth Street (Abart Island)  
Ottawa, ON, M1R 6K8

Project  
**ZIBI - BLOCK 204**

Location  
**315 Miwate Private**  
Ottawa, ON

PROJECT No.  
12791

NO	REVISION	DATE (yy-mm-dd)
A	ISSUED FOR SITE PLAN CONTROL APPLICATION	2022-04-21
B	ISSUED FOR SITE PLAN CONTROL APPLICATION RE-SUBMISSION	2022-09-15
C	75% DESIGN DEVELOPMENT FOR COORDINATION	2022-10-14
D	FOUNDATION PERMIT	2022-12-20

Preliminary  
DO NOT USE FOR  
CONSTRUCTION

Drawn by  
AC / BMP / EW

Checked by  
CL / LK

DATE (yy-mm-dd)  
22.03.21

Scale  
As indicated

**OVERALL PLAN - P1**

Revision  
**D**

Drawing Number  
**A200**

GENERAL NOTES  
 1. These architectural documents are the exclusive property of HDR Architecture Associates and NEUF architecture and cannot be used, copied or reproduced without written pre-authorization.  
 2. All dimensions which appear on the documents must be verified by the contractor before to start the work.  
 3. The architect must be notified of all errors, omissions and discrepancies between these documents and those of the others professionals.  
 4. The dimensions on these documents must be read and not measured.

Structural Engineer  
**RJC Engineers**  
 1540 Carling Avenue, Suite 304  
 Ottawa, ON, K1Z 8P9

Electrical & Mechanical Engineer  
**Smith + Andersen**  
 1600 Carling Avenue, Suite 530  
 Ottawa, ON, K1Z 1G3

Planning  
**Folenn Planning + Design**  
 388 Cooper Street, Suite 300  
 Ottawa, ON, K2P 2H7

Landscape Architect  
**CSW**  
 319 McRae Avenue, Suite 502  
 Ottawa, ON, K1Z 0S9

Civil  
**CIMA**  
 240 Catherine Street, Unit 110  
 Ottawa, ON, K2P 2G8

Architect  
**NEUF architect(e)s CANADA INC.**  
 47 Clarence St, Suite 406, Ottawa, ON K1N 9K1



Client  
**DREAM UNLIMITED**  
 30 Adelaide Street East  
 Suite 301  
 Toronto, ON, M5C 3H1  
 T: (416) 365-3535

**ZIBI**  
 6 Booth Street (Albert Island)  
 Ottawa, ON, M1R 6K8

Project  
**ZIBI - BLOCK 204**

Location  
**315 Miwate Private**  
 Ottawa, ON

PROJECT No.  
 12791

NO	REVISION	DATE (yy-mm-dd)
A	ISSUED FOR SITE PLAN CONTROL APPLICATION	2022-04-21
B	ISSUED FOR SITE PLAN CONTROL APPLICATION RE-SUBMISSION	2022-09-15
C	75% DESIGN DEVELOPMENT FOR COORDINATION	2022-10-14
D	FOUNDATION PERMIT	2022-12-20

**Preliminary  
DO NOT USE FOR  
CONSTRUCTION**

Drawn by  
**Author**

Checked by  
**Checker**

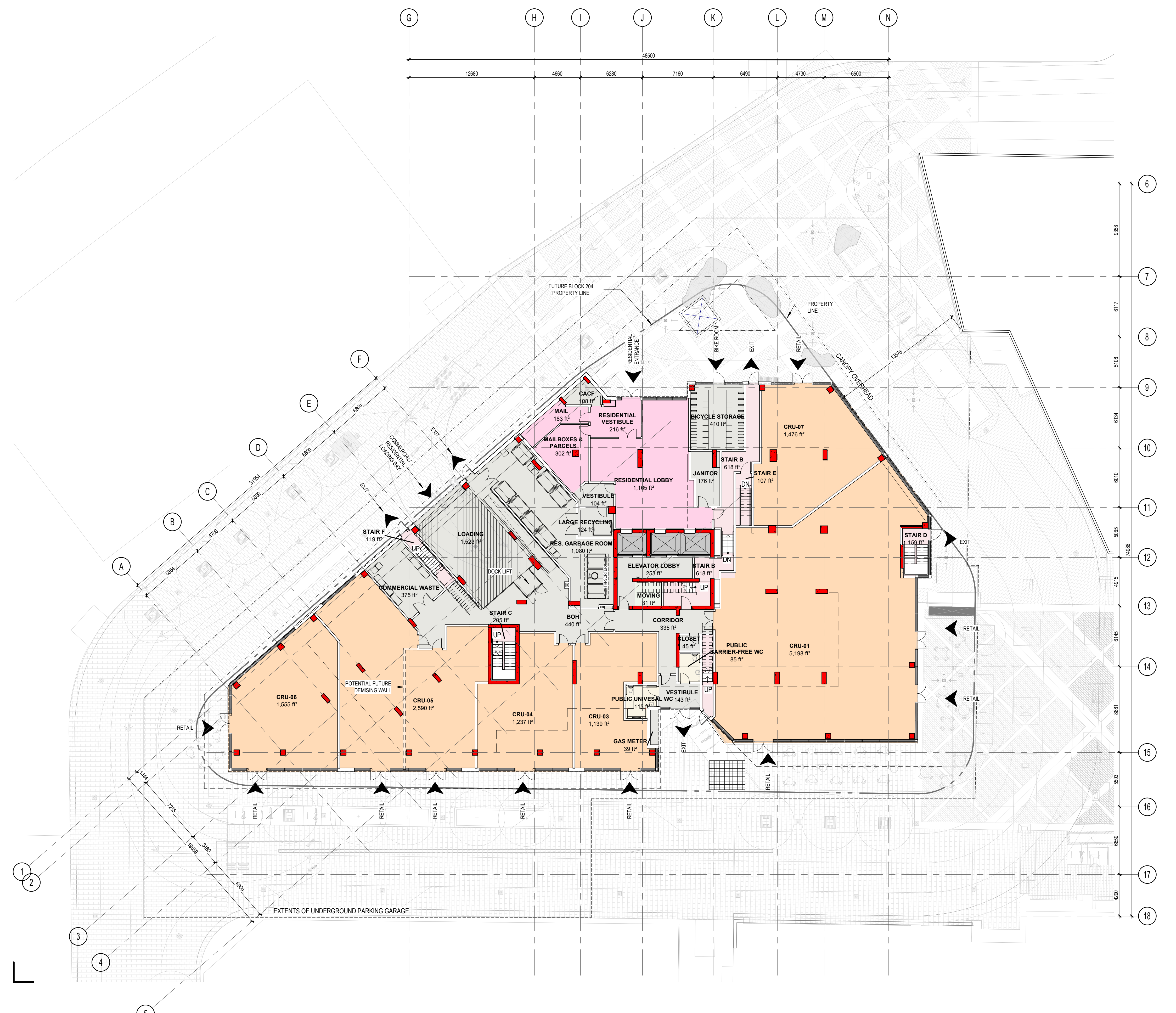
DATE (yy-mm-dd)  
 06/08/22

Scale  
 1 : 200

**OVERALL PLAN -  
GROUND FLOOR**

Revision  
**D**

Drawing Number  
**A201**



**OVERALL PLAN - GROUND FLOOR**  
 1 : 200

GENERAL NOTES  
 1. These architectural documents are the exclusive property of HDR Architecture Associates and NEUF architects and cannot be used, copied or reproduced without written pre-authorization.  
 2. All dimensions which appear on the documents must be verified by the contractor before to start the work.  
 3. The architect must be notified of all errors, omissions and discrepancies between these documents and those of the others professionals.  
 4. The dimensions on these documents must be read and not measured.

Structural Engineer  
**RJC Engineers**  
 1540 Carling Avenue Suite 304  
 Ottawa, ON, K1Z 8P9

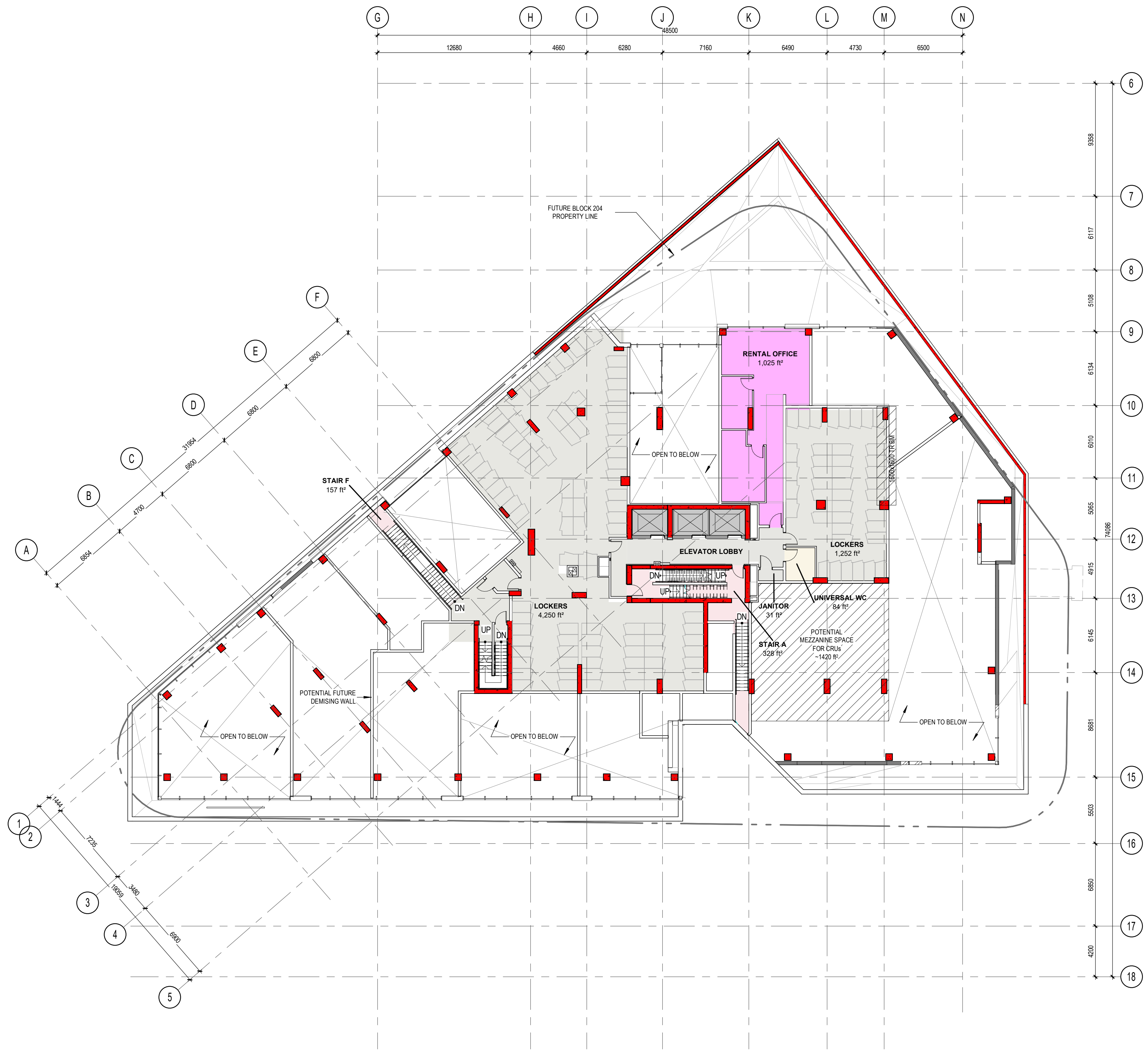
Electrical & Mechanical Engineer  
**Smith + Andersen**  
 1600 Carling Avenue, Suite 530  
 Ottawa, ON, K1Z 1G3

Planning  
**Folenn Planning + Design**  
 388 Cooper Street, Suite 300  
 Ottawa, ON, K2P 2H7

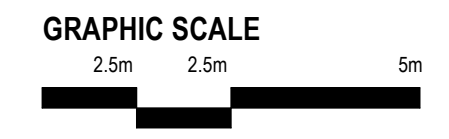
Landscape Architect  
**CSW**  
 319 McRae Avenue, Suite 502  
 Ottawa, ON, M1Z 0S9

Civil  
**CIMA**  
 240 Catherine Street, Unit 110  
 Ottawa, ON, K2P 2G8

Architect  
**NEUF architect(e)s CANADA INC.**  
 47 Clarence St. Suite 406, Ottawa, ON K1N 9K1



OVERALL PLAN - MEZZANINE  
 1: 200



Client  
**DREAM UNLIMITED**  
 30 Adelaide Street East  
 Suite 301  
 Toronto, ON, M5C 3H1  
 T: (416) 365-3535

**ZIBI**  
 6 Booth Street (Albert Island)  
 Ottawa, ON, M1R 6K8

Project  
**ZIBI - BLOCK 204**

Location PROJECT No.  
**315 Miwate Private** 12791  
**Ottawa, ON**

NO	REVISION	DATE (yy-mm-dd)
A	ISSUED FOR SITE PLAN CONTROL APPLICATION	2022-04-21
B	ISSUED FOR SITE PLAN CONTROL APPLICATION RE-SUBMISSION	2022-09-15
C	75% DESIGN DEVELOPMENT FOR COORDINATION	2022-10-14
D	FOUNDATION PERMIT	2022-12-20

**Preliminary  
 DO NOT USE FOR  
 CONSTRUCTION**

Drawn by  
**AC / BMP / EW**  
 DATE (yy-mm-dd)  
 22.03.21  
 Drawing Title

Checked by  
**CL / LK**  
 Scale  
 1 : 200

**OVERALL PLAN -  
 MEZZANINE**

Revision Drawing Number  
**D A202**

GENERAL NOTES  
 1. These architectural documents are the exclusive property of HDR Architecture Associates and NEUF architects and cannot be used, copied or reproduced without written pre-authorization.  
 2. All dimensions which appear on the documents must be verified by the contractor before to start the work.  
 3. The architect must be notified of all errors, omissions and discrepancies between these documents and those of the others professionals.  
 4. The dimensions on these documents must be read and not measured.

Structural Engineer  
**RJC Engineers**  
 1540 Carling Avenue, Suite 304  
 Ottawa, ON, K1Z 8P9

Electrical & Mechanical Engineer  
**Smith + Andersen**  
 1600 Carling Avenue, Suite 530  
 Ottawa, ON, K1Z 1G3

Planning  
**Folenn Planning + Design**  
 388 Cooper Street, Suite 300  
 Ottawa, ON, K2P 2H7

Landscape Architect  
**CSW**  
 319 McRae Avenue, Suite 502  
 Ottawa, ON, M1Z 0S9

Civil  
**CIMA**  
 240 Catherine Street, Unit 110  
 Ottawa, ON, K2P 2G8

Architect  
**NEUF architect(e)s** CANADA INC.  
 47 Clarence St, Suite 406, Ottawa, ON K1N 9K1



OVERALL PLAN - LEVEL 2 AMENITY  
 1: 200

**GRAPHIC SCALE**  
 2.5m 2.5m 5m

**PROGRAM LEGEND**

- STUDIO
- 1 BR
- 1 BR + D
- 2 BDR
- 2 BDR + D
- TERRACE
- COMMON / BOH
- STAIRS
- AMENITY



Client  
**DREAM UNLIMITED**  
 30 Adelaide Street East  
 Suite 301  
 Toronto, ON, M5C 3H1  
 T: (416) 365-3535

**ZIBI**  
 6 Booth Street (Albert Island)  
 Ottawa, ON, M1R 6K8

Project  
**ZIBI - BLOCK 204**

Location  
**315 Miwate Private**  
 Ottawa, ON

PROJECT No.  
 12791

NO	REVISION	DATE (yy-mm-dd)
A	ISSUED FOR SITE PLAN CONTROL APPLICATION	2022-04-21
B	ISSUED FOR SITE PLAN CONTROL APPLICATION RE-SUBMISSION	2022-09-15
C	75% DESIGN DEVELOPMENT FOR COORDINATION	2022-10-14
D	FOUNDATION PERMIT	2022-12-20

**Preliminary**  
**DO NOT USE FOR CONSTRUCTION**

Drawn by  
 AC / BMP / EW

Checked by  
 CL / LK

DATE (yy.mm.dd)  
 22.03.21

Scale  
 As indicated

Drawing Title  
**OVERALL PLAN - LEVEL 2 AMENITY**

Revision  
**D**

Drawing Number  
**A203**

GENERAL NOTES  
 1. These architectural documents are the exclusive property of HDR Architecture Associates and NEUF architects and cannot be used, copied or reproduced without written pre-authorization.  
 2. All dimensions which appear on the documents must be verified by the contractor before to start the work.  
 3. The architect must be notified of all errors, omissions and discrepancies between these documents and those of the others professionals.  
 4. The dimensions on these documents must be read and not measured.

Structural Engineer  
**RJC Engineers**  
 1540 Carling Avenue, Suite 304  
 Ottawa, ON, K1Z 8P9

Electrical & Mechanical Engineer  
**Smith + Andersen**  
 1600 Carling Avenue, Suite 530  
 Ottawa, ON, K1Z 1G3

Planning  
**Folenn Planning + Design**  
 388 Cooper Street, Suite 300  
 Ottawa, ON, K2P 2H7

Landscape Architect  
**CSW**  
 319 McRae Avenue, Suite 502  
 Ottawa, ON, M1Z 0S9

Civil  
**CIMA**  
 240 Catherine Street, Unit 110  
 Ottawa, ON, K2P 2G8

Architect  
**NEUF architect(e)s CANADA INC.**  
 47 Clarence St, Suite 406, Ottawa, ON K1N 9K1



OVERALL PLAN - LEVEL 3-5

1:200

3

A204



PROJECT NORTH

Client  
**DREAM UNLIMITED**  
 30 Adelaide Street East  
 Suite 301  
 Toronto, ON, M5C 3H1  
 T: (416) 365-3535

**ZIBI**  
 6 Booth Street (Albert Island)  
 Ottawa, ON, M1R 6K8

Project  
**ZIBI - BLOCK 204**

Location PROJECT No.  
**315 Miwate Private** 12791  
**Ottawa, ON**

NO	REVISION	DATE (yy-mm-dd)
A	ISSUED FOR SITE PLAN CONTROL APPLICATION	2022-04-21
B	ISSUED FOR SITE PLAN CONTROL APPLICATION RE-SUBMISSION	2022-09-15
C	75% DESIGN DEVELOPMENT FOR COORDINATION	2022-10-14
D	FOUNDATION PERMIT	2022-12-20

Preliminary  
 DO NOT USE FOR  
 CONSTRUCTION

Drawn by Author  
 DATE (yy-mm-dd) 03/21/22  
 Drawing Title

Checked by Checker  
 Scale 1:200

**OVERALL PLAN - LEVEL 3-5**

Revision Drawing Number  
**D A204**

GENERAL NOTES  
 1. These architectural documents are the exclusive property of HDR Architecture Associates and NEUF architect(e)s and cannot be used, copied or reproduced without written pre-authorization.  
 2. All dimensions which appear on the documents must be verified by the contractor before to start the work.  
 3. The architect must be notified of all errors, omissions and discrepancies between these documents and those of the others professionals.  
 4. The dimensions on these documents must be read and not measured.

Structural Engineer  
**RJC Engineers**  
 1540 Carling Avenue, Suite 304  
 Ottawa, ON, K1Z 6P9

Electrical & Mechanical Engineer  
**Smith + Andersen**  
 1600 Carling Avenue, Suite 530  
 Ottawa, ON, K1Z 1G3

Planning  
**Folenn Planning + Design**  
 388 Cooper Street, Suite 300  
 Ottawa, ON, K2P 2H7

Landscape Architect  
**CSW**  
 319 McRae Avenue, Suite 502  
 Ottawa, ON, M1Z 0S9

Civil  
**CIMA**  
 240 Catherine Street, Unit 110  
 Ottawa, ON, K2P 2G8

Architect  
**NEUF architect(e)s CANADA INC.**  
 47 Clarence St, Suite 406, Ottawa, ON K1N 9K1



OVERALL PLAN - LEVEL 6-8

1: 200

1  
A205



PROJECT NORTH

Client  
**DREAM UNLIMITED**  
 30 Adelaide Street East  
 Suite 301  
 Toronto, ON, M5C 3H1  
 T: (416) 365-3535

**ZIBI**  
 6 Booth Street (Abert Island)  
 Ottawa, ON, M1R 6K8

Project  
**ZIBI - BLOCK 204**

Location  
**315 Miwate Private**  
 Ottawa, ON

PROJECT No.  
 12791

NO	REVISION	DATE (yy-mm-dd)
A	ISSUED FOR SITE PLAN CONTROL APPLICATION	2022-04-21
B	ISSUED FOR SITE PLAN CONTROL APPLICATION RE-SUBMISSION	2022-09-15
C	75% DESIGN DEVELOPMENT FOR COORDINATION	2022-10-14
D	FOUNDATION PERMIT	2022-12-20

Preliminary  
 DO NOT USE FOR  
 CONSTRUCTION

Drawn by  
 Author  
 DATE (yy-mm-dd)  
 07/29/22  
 Drawing Title

Checked by  
 Checker  
 Scale  
 1 : 200

**OVERALL PLAN - LEVEL 6-8**

Revision  
**D**  
 Drawing Number  
**A205**

GENERAL NOTES  
 1. These architectural documents are the exclusive property of HDR Architecture Associates and NEUF architecture and cannot be used, copied or reproduced without written pre-authorization.  
 2. All dimensions which appear on the documents must be verified by the contractor before to start the work.  
 3. The architect must be notified of all errors, omissions and discrepancies between these documents and those of the others professionals.  
 4. The dimensions on these documents must be read and not measured.

Structural Engineer  
**RJC Engineers**  
 1540 Carling Avenue, Suite 304  
 Ottawa, ON, K1Z 8P9

Electrical & Mechanical Engineer  
**Smith + Andersen**  
 1600 Carling Avenue, Suite 530  
 Ottawa, ON, K1Z 1G3

Planning  
**Folenn Planning + Design**  
 388 Cooper Street, Suite 300  
 Ottawa, ON, K2P 2H7

Landscape Architect  
**CSW**  
 319 McRae Avenue, Suite 502  
 Ottawa, ON, M1Z 0S9

Civil  
**CIMA**  
 240 Catherine Street, Unit 110  
 Ottawa, ON, K2P 2G8

Architect  
**NEUF architect(e)s CANADA INC.**  
 47 Clarence St, Suite 406, Ottawa, ON K1N 9K1



Client  
**DREAM UNLIMITED**  
 30 Adelaide Street East  
 Suite 301  
 Toronto, ON, M5C 3H1  
 T: (416) 365-3535

**ZIBI**  
 6 Booth Street (Albert Island)  
 Ottawa, ON, M1R 6K8

Project  
**ZIBI - BLOCK 204**

Location  
**315 Miwate Private**  
 Ottawa, ON

PROJECT No.  
 12791

NO	REVISION	DATE (yy-mm-dd)
A	ISSUED FOR SITE PLAN CONTROL APPLICATION	2022-04-21
B	ISSUED FOR SITE PLAN CONTROL APPLICATION RE-SUBMISSION	2022-09-15
C	75% DESIGN DEVELOPMENT FOR COORDINATION	2022-10-14
D	FOUNDATION PERMIT	2022-12-20

**Preliminary**  
**DO NOT USE FOR CONSTRUCTION**

Drawn by  
**Author**  
 DATE (yy-mm-dd)  
 07/29/22  
 Drawing Title

Checked by  
**Checker**  
 Scale  
 1 : 200

**OVERALL PLAN - LEVEL 9 AMENITY**

Revision  
**D**  
 Drawing Number  
**A206**

GENERAL NOTES  
 1. These architectural documents are the exclusive property of HDR Architecture Associates and NEUF architects and cannot be used, copied or reproduced without written pre-authorization.  
 2. All dimensions which appear on the documents must be verified by the contractor before to start the work.  
 3. The architect must be notified of all errors, omissions and discrepancies between these documents and those of the others professionals.  
 4. The dimensions on these documents must be read and not measured.

Structural Engineer  
**RJC Engineers**  
 1540 Carling Avenue, Suite 304  
 Ottawa, ON, K1Z 8P9

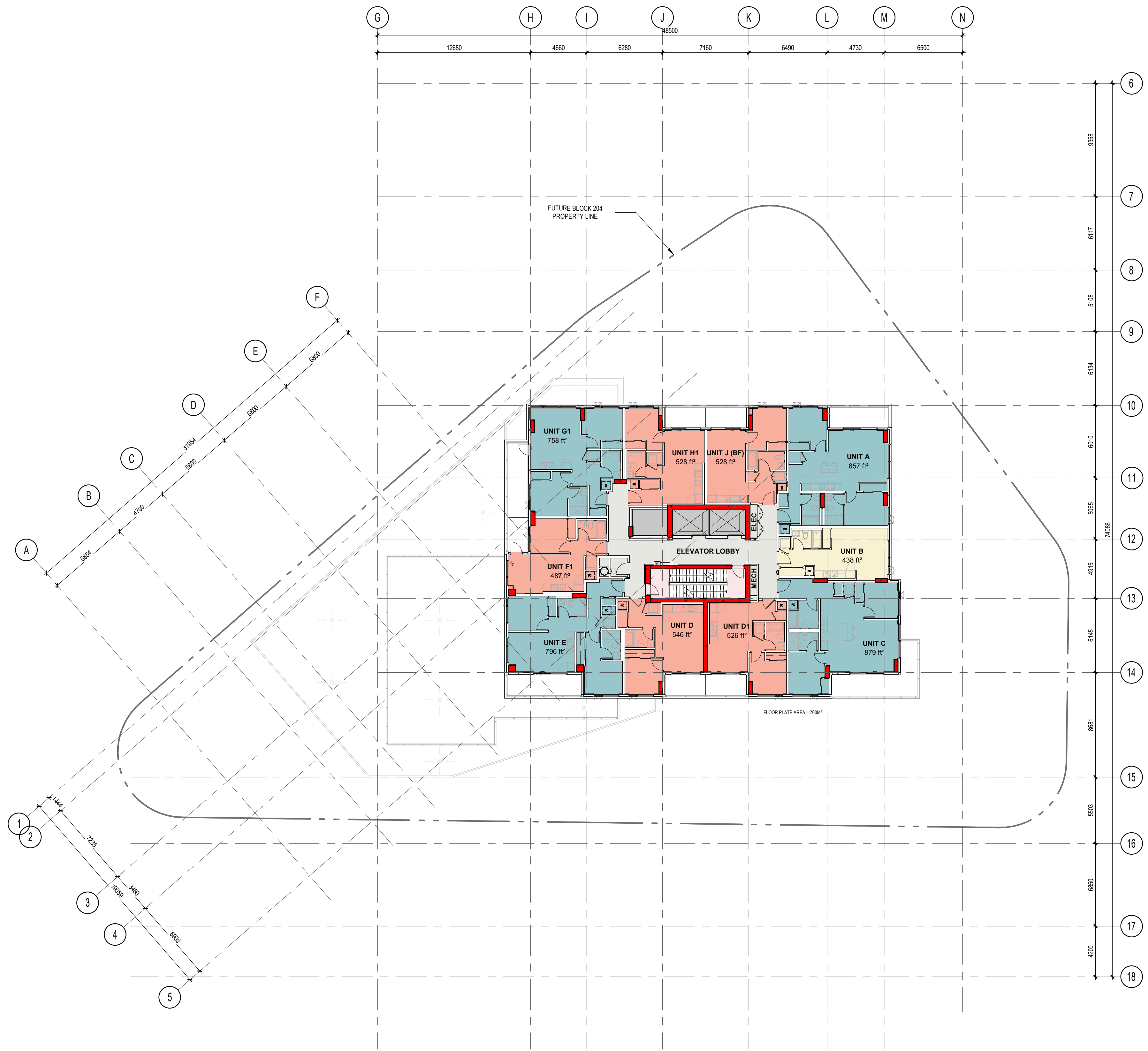
Electrical & Mechanical Engineer  
**Smith + Andersen**  
 1600 Carling Avenue, Suite 530  
 Ottawa, ON, K1Z 1G3

Planning  
**Folenn Planning + Design**  
 388 Cooper Street, Suite 300  
 Ottawa, ON, K2P 2H7

Landscape Architect  
**CSW**  
 319 McRae Avenue, Suite 502  
 Ottawa, ON, M1Z 0S9

Civil  
**CIMA**  
 240 Catherine Street, Unit 110  
 Ottawa, ON, K2P 2G8

Architect  
**NEUF architect(e)s CANADA INC.**  
 47 Clarence St, Suite 406, Ottawa, ON K1N 9K1



OVERALL PLAN - LEVEL 10

1: 200

1  
A207



PROJECT NORTH

Client  
**DREAM UNLIMITED**  
 30 Adelaide Street East  
 Suite 301  
 Toronto, ON, M5C 3H1  
 T: (416) 365-3535

**ZIBI**  
 6 Booth Street (Abert Island)  
 Ottawa, ON, M1R 6K8

Project  
**ZIBI - BLOCK 204**

Location  
**315 Miwate Private**  
 Ottawa, ON

PROJECT No.  
 12791

NO	REVISION	DATE (yy-mm-dd)
A	ISSUED FOR SITE PLAN CONTROL APPLICATION	2022-04-21
B	ISSUED FOR SITE PLAN CONTROL APPLICATION RE-SUBMISSION	2022-09-15
C	75% DESIGN DEVELOPMENT FOR COORDINATION	2022-10-14
D	FOUNDATION PERMIT	2022-12-20

Preliminary  
 DO NOT USE FOR  
 CONSTRUCTION

Drawn by  
**Author**  
 DATE (yy-mm-dd)  
 07/29/22  
 Drawing Title

Checked by  
**Checker**  
 Scale  
 1 : 200

**OVERALL PLAN - LEVEL 10**

Revision  
**D**  
 Drawing Number  
**A207**



- GENERAL NOTES
1. These architectural documents are the exclusive property of HDR Architecture Associates and NEUF architects and cannot be used, copied or reproduced without written pre-authorization.
  2. All dimensions which appear on the documents must be verified by the contractor before to start the work.
  3. The architect must be notified of all errors, omissions and discrepancies between these documents and those of the others professionals.
  4. The dimensions on these documents must be read and not measured.

Structural Engineer  
**RJC Engineers**  
 1540 Carling Avenue, Suite 304  
 Ottawa, ON, K1Z 6P9

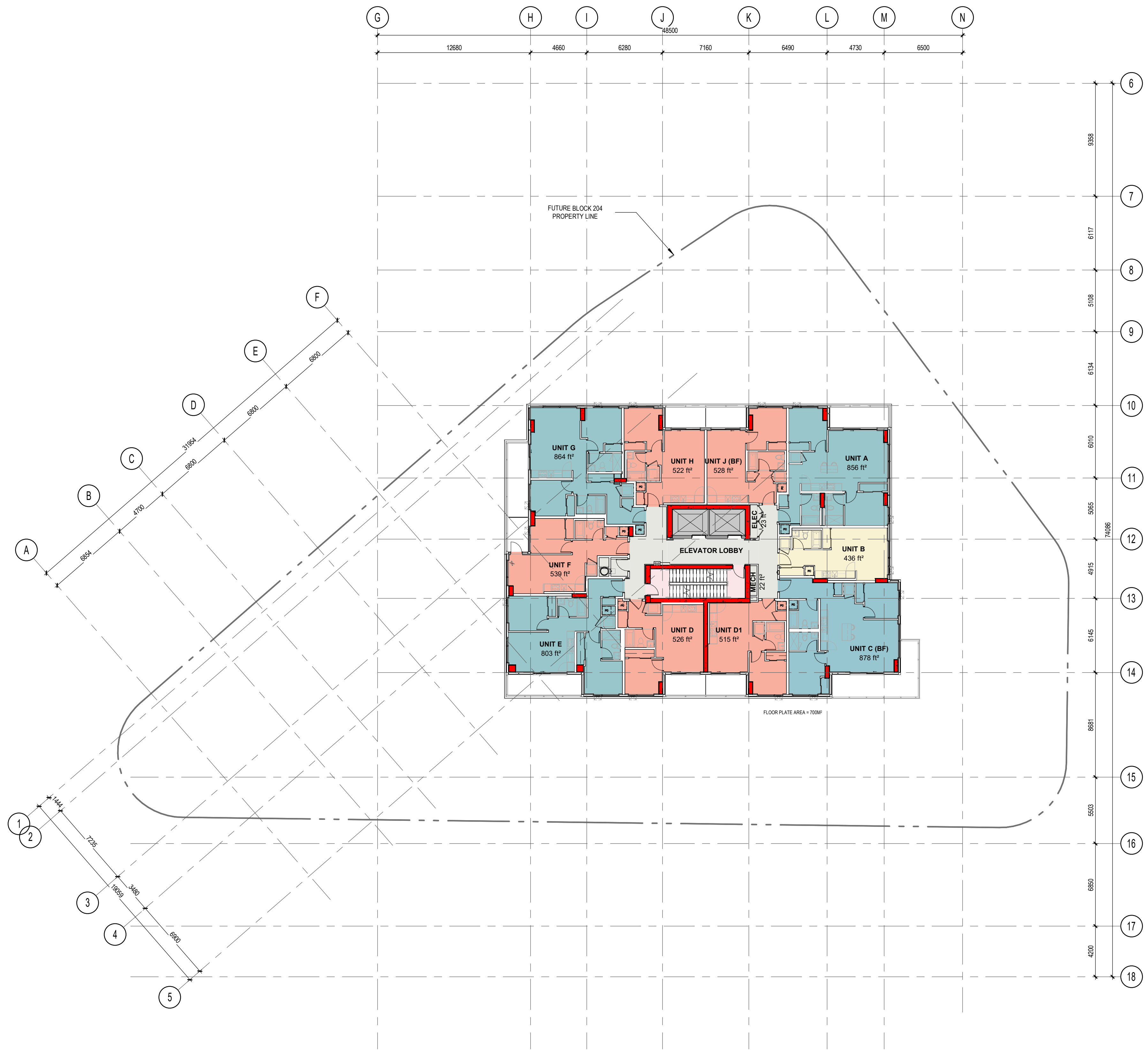
Electrical & Mechanical Engineer  
**Smith + Andersen**  
 1600 Carling Avenue, Suite 530  
 Ottawa, ON, K1Z 1G3

Planning  
**Folenn Planning + Design**  
 388 Cooper Street, Suite 300  
 Ottawa, ON, K2P 2H7

Landscape Architect  
**CSW**  
 319 McRae Avenue, Suite 502  
 Ottawa, ON, M1Z 0S9

Civil  
**CIMA**  
 240 Catherine Street, Unit 110  
 Ottawa, ON, K2P 2G8

Architect  
**NEUF architect(e)s** CANADA INC.  
 47 Clarence St, Suite 406, Ottawa, ON K1N 9K1



OVERALL PLAN - LEVEL 11-22  
 1 : 200



Client  
**DREAM UNLIMITED**  
 30 Adelaide Street East  
 Suite 301  
 Toronto, ON, M5C 3H1  
 T: (416) 365-3535

**ZIBI**  
 6 Booth Street (Albert Island)  
 Ottawa, ON, M1R 6K8

Project  
**ZIBI - BLOCK 204**

Location  
**315 Miwate Private**  
 Ottawa, ON

PROJECT No.  
 12791

NO	REVISION	DATE (yy-mm-dd)
A	ISSUED FOR SITE PLAN CONTROL APPLICATION	2022-04-21
B	ISSUED FOR SITE PLAN CONTROL APPLICATION RE-SUBMISSION	2022-09-15
C	75% DESIGN DEVELOPMENT FOR COORDINATION	2022-10-14
D	FOUNDATION PERMIT	2022-12-20

**Preliminary**  
 DO NOT USE FOR CONSTRUCTION

Drawn by  
**Author**  
 DATE (yy-mm-dd)  
 07/29/22  
 Drawing Title

Checked by  
**Checker**  
 Scale  
 1 : 200

**OVERALL PLAN - LEVEL 11-22**

Revision  
**D**  
 Drawing Number  
**A208**