

- GENERAL NOTES
1. These architectural documents are the exclusive property of HDR Architecture Associates and NEUF architect(e)s and cannot be used, copied or reproduced without written pre-authorization.
 2. All dimensions which appear on the documents must be verified by the contractor before to start the work.
 3. The architect must be notified of all errors, omissions and discrepancies between these documents and those of the other professionals.
 4. The dimensions on these documents must be read and not measured.

Structural Engineer
RJC Engineers
 1540 Carling Avenue, Suite 304
 Ottawa, ON, K1Z 8P9

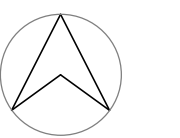
Electrical & Mechanical Engineer
Smith + Andersen
 1600 Carling Avenue, Suite 530
 Ottawa, ON, K1Z 1G3

Planning
Folenn Planning + Design
 388 Cooper Street, Suite 300
 Ottawa, ON, K2P 2H7

Landscape Architect
CSW
 319 McRae Avenue, Suite 502
 Ottawa, ON, M1Z 0S9

Civil
CIMA
 240 Catherine Street, Unit 110
 Ottawa, ON, K2P 2G8

Architect
NEUF architect(e)s CANADA INC.
 47 Clarence St, Suite 406, Ottawa, ON K1N 9K1



PROJECT NORTH

Client
DREAM UNLIMITED
 30 Adelaide Street East
 Suite 301
 Toronto, ON, M5C 3H1
 T: (416) 365-3535

ZIBI
 6 Booth Street (Albert Island)
 Ottawa, ON, M1R 6K8

Project
ZIBI - BLOCK 204

Location PROJECT No.
315 Miwate Private 12791
Ottawa, ON

NO	REVISION	DATE (yy-mm-dd)
A	ISSUED FOR SITE PLAN CONTROL APPLICATION	2022-04-21
B	ISSUED FOR SITE PLAN CONTROL APPLICATION RE-SUBMISSION	2022-09-15
C	75% DESIGN DEVELOPMENT FOR COORDINATION	2022-10-14
D	FOUNDATION PERMIT	2022-12-20

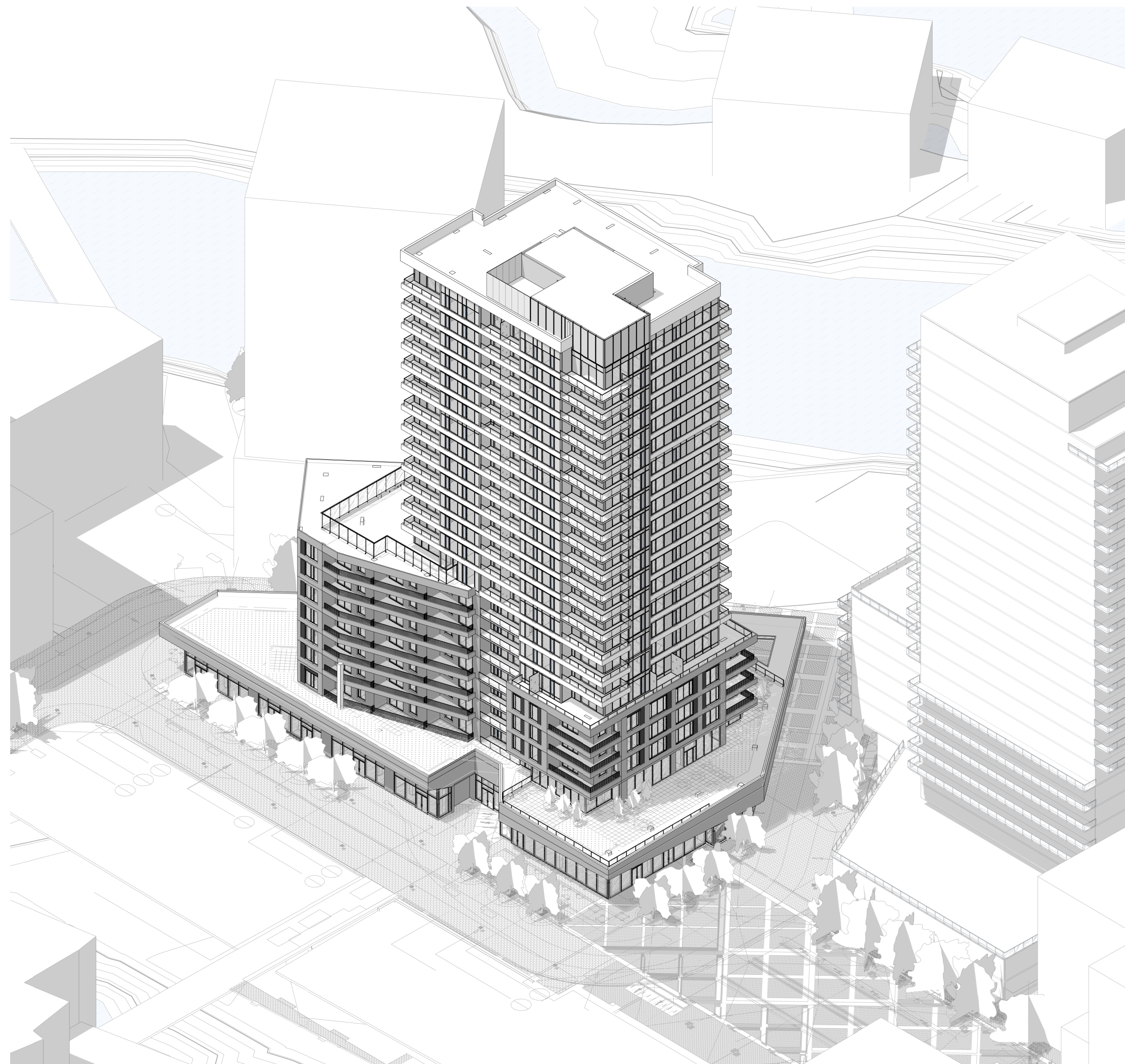
**Preliminary
 DO NOT USE FOR
 CONSTRUCTION**

Drawn by
Author
 DATE (yy-mm-dd)
 03/21/22
 Drawing Title

Checked by
Checker
 Scale

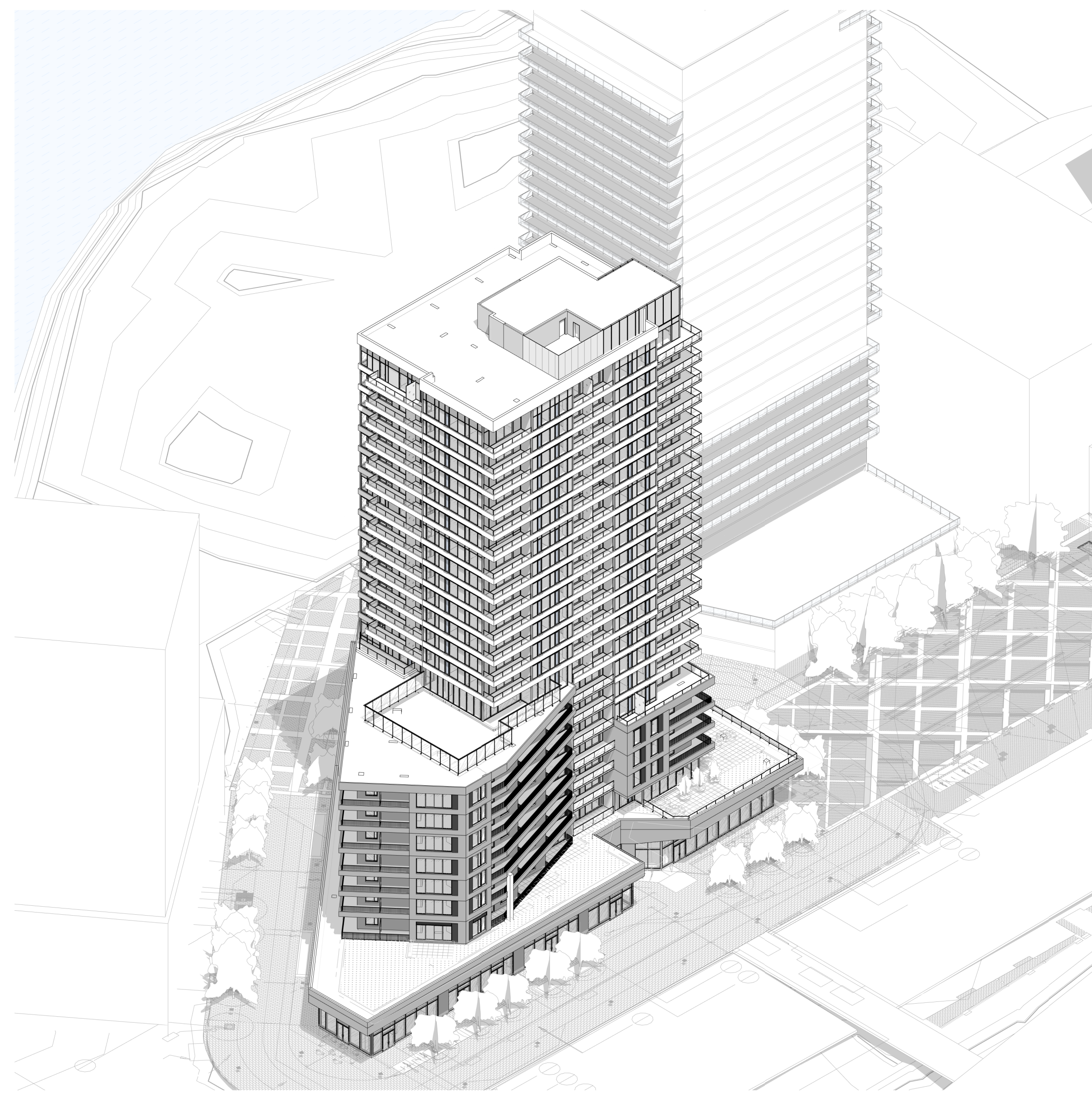
AXONOMETRIC VIEWS

Revision Drawing Number
D A005



3D - SOUTH EAST AXONOMETRIC

1
 A005



3D - SOUTH WEST AXONOMETRIC

2
 A005

- GENERAL NOTES
1. These architectural documents are the exclusive property of HDR Architecture Associates and NEUF architect(e)s and cannot be used, copied or reproduced without written pre-authorization.
 2. All dimensions which appear on the documents must be verified by the contractor before to start the work.
 3. The architect must be notified of all errors, omissions and discrepancies between these documents and those of the others professionals.
 4. The dimensions on these documents must be read and not measured.

Structural Engineer
RJC Engineers
 1540 Carling Avenue, Suite 304
 Ottawa, ON, K1Z 8P9

Electrical & Mechanical Engineer
Smith + Andersen
 1600 Carling Avenue, Suite 530
 Ottawa, ON, K1Z 1G3

Planning
Folenn Planning + Design
 388 Coopers Street, Suite 300
 Ottawa, ON, K2P 2H7

Landscape Architect
CSW
 319 McRae Avenue, Suite 502
 Ottawa, ON, M1Z 0S9

Civil
CIMA
 240 Catherine Street, Unit 110
 Ottawa, ON, K2P 2G8

Architect
NEUF architect(e)s CANADA INC.
 47 Clarence St, Suite 406, Ottawa, ON K1N 9K1



Client
DREAM UNLIMITED
 30 Adelaide Street East
 Suite 301
 Toronto, ON, M5C 3H1
 T: (416) 365-3535

ZIBI
 6 Booth Street (Albert Island)
 Ottawa, ON, M1R 6K8

Project
ZIBI - BLOCK 204

Location PROJECT No.
315 Miwate Private 12791
Ottawa, ON

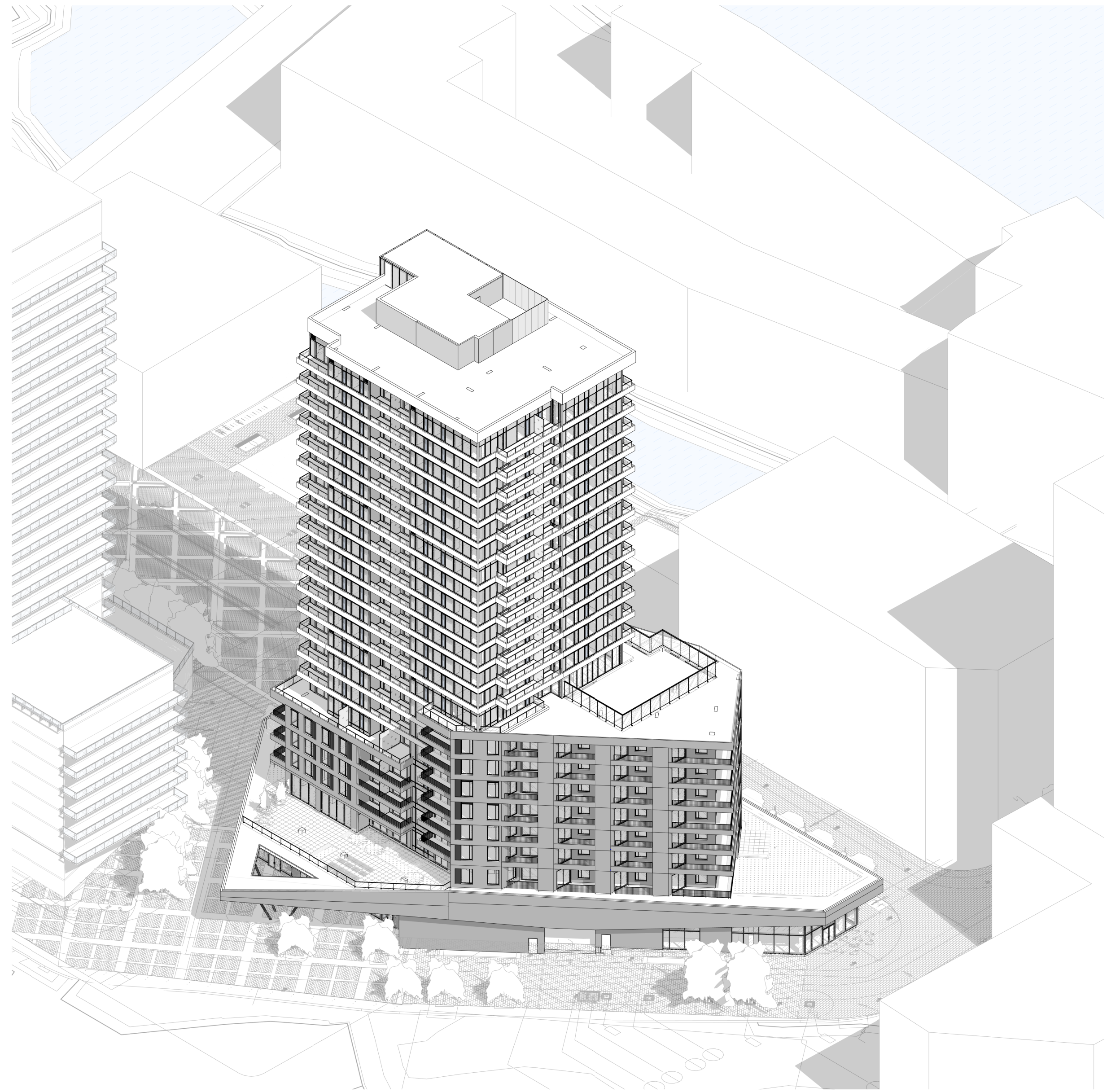
NO	REVISION	DATE (yy-mm-dd)
A	ISSUED FOR SITE PLAN CONTROL APPLICATION	2022-04-21
B	ISSUED FOR SITE PLAN CONTROL APPLICATION RE-SUBMISSION	2022-09-15
C	75% DESIGN DEVELOPMENT FOR COORDINATION	2022-10-14
D	FOUNDATION PERMIT	2022-12-20

**Preliminary
 DO NOT USE FOR
 CONSTRUCTION**

Drawn by
AC / BMP / EW Checked by
CL / LK
 DATE (yy.mm.dd) 22.03.21 Scale

AXONOMETRIC VIEWS

Revision Drawing Number
D A006



3D - NORTH WEST AXONOMETRIC 2
A006



3D - NORTH EAST AXONOMETRIC 3
A006

GENERAL NOTES

1. These architectural documents are the exclusive property of HDR Architecture Associates and NEUF architect(e)s and cannot be used, copied or reproduced without written pre-authorization.
2. All dimensions which appear on the documents must be verified by the contractor before to start the work.
3. The architect must be notified of all errors, omissions and discrepancies between these documents and those of the other professionals.
4. The dimensions on these documents must be read and not measured.

Structural Engineer
RJC Engineers
 1540 Carling Avenue, Suite 304
 Ottawa, ON, K1Z 8P9

Electrical & Mechanical Engineer
Smith + Andersen
 1600 Carling Avenue, Suite 530
 Ottawa, ON, K1Z 1G3

Planning
Folenn Planning + Design
 388 Cooper Street, Suite 300
 Ottawa, ON, K2P 2H7

Landscape Architect
CSW
 319 McRae Avenue, Suite 502
 Ottawa, ON, K1Z 0S9

Civil
CIMA
 240 Catherine Street, Unit 110
 Ottawa, ON, K2P 2G8

Architect
NEUF architect(e)s CANADA INC.
 47 Clarence St, Suite 406, Ottawa, ON K1N 9K1

NEUF 
 ARCHITECTS



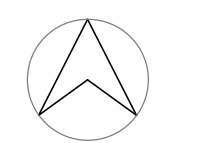
VIEW FROM HEAD ST. SQ.



VIEW FROM SOUTH WEST



VIEW FROM NORTH



PROJECT NORTH

Client
DREAM UNLIMITED
 30 Adelaide Street East
 Suite 301
 Toronto, ON, M5C 3H1
 T: (416) 365-3535

ZIBI
 6 Booth Street (Albert Island)
 Ottawa, ON, M1R 6K8

Project
ZIBI - BLOCK 204

Location
315 Miwate Private
 Ottawa, ON

PROJECT No.
 12791

NO	REVISION	DATE (yy-mm-dd)
A	75% DESIGN DEVELOPMENT FOR COORDINATION	2022-10-14
B	FOUNDATION PERMIT	2022-12-20

Preliminary
DO NOT USE FOR
CONSTRUCTION

Drawn by
 AC / BMP / EW

Checked by
 CL / LK

DATE (yy-mm-dd)
 22.03.21

Scale

PROJECT PERSPECTIVES

Revision
B

Drawing Number
A007