

**SURVEYOR'S REAL PROPERTY REPORT**  
**PART 1 Plan of**  
**CONCESSION 2 (OTTAWA FRONT)**  
**GEOGRAPHIC TOWNSHIP OF GLOUCESTER**  
**CITY OF OTTAWA**  
 Surveyed by Annis, O'Sullivan, Vollebek Ltd.

Scale 1:250  
 METRIC DISTANCES SHOWN ON THIS PLAN ARE IN METRES AND CAN BE CONVERTED TO FEET BY DIVIDING BY 0.3048.

**Surveyor's Certificate**  
 I CERTIFY THAT:  
 1. This survey and plan are correct and in accordance with the Surveys Act and the Land Titles Act and the regulations made under them.  
 2. The survey was completed on the 29th day of January, 2019.

January 29th, 2019  
 David R. Gauthier  
 Ontario Land Surveyor

**PART 2**  
 THIS PLAN MUST BE READ IN CONJUNCTION WITH SURVEY REPORT DATED... JANUARY 25, 2019...  
 ANNIS, O'SULLIVAN, VOLLEBEK LTD. (The Client), their solicitors, mortgagees and other related parties, permission to use original, reprinted, scanned photographs and other related parties' reports in transactions involving The Client.

- Notes & Legend**
- Survey Monument Planted
  - Survey Monument Found
  - Standard Iron Bar
  - Short Standard Iron Bar
  - Iron Bar
  - Cut Cross
  - Concrete Pin
  - Round Iron Bar
  - Spikes & Washer
  - Short Standard Iron Bar
  - Washer
  - Wires
  - Measured
  - ANIS, O'SULLIVAN, VOLLEBEK LTD.
  - Plan (847) October 28, 2004
  - Registered Plan 4M-585
  - Plan SR-3024
  - Plan SR-11151
  - Plan SR-11152
  - Plan (AOC) September 30, 1987
  - Plan 4R-5335
  - Plan (AOC) September 30, 1987
  - Plan 4R-14515
  - Plan 4R-19648
  - Foundation
  - Deciduous Tree
  - Coniferous Tree
  - Fire Hydrant
  - Water Valve
  - Maintenance Hole (Storm Sewer)
  - Maintenance Hole (Sanitary Sewer)
  - Maintenance Hole (Bell Telephone)
  - Underground Storm Sewer
  - Underground Sanitary Sewer
  - Underground Water
  - Underground Gas
  - Overhead Wires
  - Catch Basin
  - Gas Meter
  - Sign
  - Link Fence
  - Board Fence
  - Metal Pole
  - Utility Pole
  - Anchor
  - Flag Pole
  - Light Standard
  - Air Conditioner
  - Location of Elevation
  - Top of Concrete Cur Elevation
  - Contour Line
  - Property Line

BEARINGS AND GRID ELEVATIONS DERIVED FROM CAN-NAD 2011 REAL TIME GPS OBSERVATIONS AND ARE REFERRED TO THE CENTRAL MERIDIAN OF NAD 83 (1983) UTM ZONE 18 Q UTM COORDINATES (EASTING 670,000.00; NORTHING 47,500,000.00) APPLIED TO DATUM TRANSFORMATION (P1851) AND 2-DIMENSIONAL CORRECTIONS (P8).

**ELEVATION NOTES**  
 1. Elevations shown are geoidic and are referred to the CGVD08 geoidic datum.  
 2. The elevations shown are for the purpose of providing a general indication of the ground surface and are not to be used as a benchmark for any other purpose.  
 3. A field location of underground utility is indicated by a dashed line and a dot.

**UTILITY NOTES**  
 1. This drawing cannot be accepted as acknowledging all of the utilities and I will not be responsible for the user to contact the respective utility authorities for all of the utilities shown.  
 2. Only visible surface utilities were located.  
 3. A field location of underground utility is indicated by a dashed line and a dot.

**UTILITY NOTES**  
 1. This drawing cannot be accepted as acknowledging all of the utilities and I will not be responsible for the user to contact the respective utility authorities for all of the utilities shown.  
 2. Only visible surface utilities were located.  
 3. A field location of underground utility is indicated by a dashed line and a dot.

**UTILITY NOTES**  
 1. This drawing cannot be accepted as acknowledging all of the utilities and I will not be responsible for the user to contact the respective utility authorities for all of the utilities shown.  
 2. Only visible surface utilities were located.  
 3. A field location of underground utility is indicated by a dashed line and a dot.

**UTILITY NOTES**  
 1. This drawing cannot be accepted as acknowledging all of the utilities and I will not be responsible for the user to contact the respective utility authorities for all of the utilities shown.  
 2. Only visible surface utilities were located.  
 3. A field location of underground utility is indicated by a dashed line and a dot.

**UTILITY NOTES**  
 1. This drawing cannot be accepted as acknowledging all of the utilities and I will not be responsible for the user to contact the respective utility authorities for all of the utilities shown.  
 2. Only visible surface utilities were located.  
 3. A field location of underground utility is indicated by a dashed line and a dot.

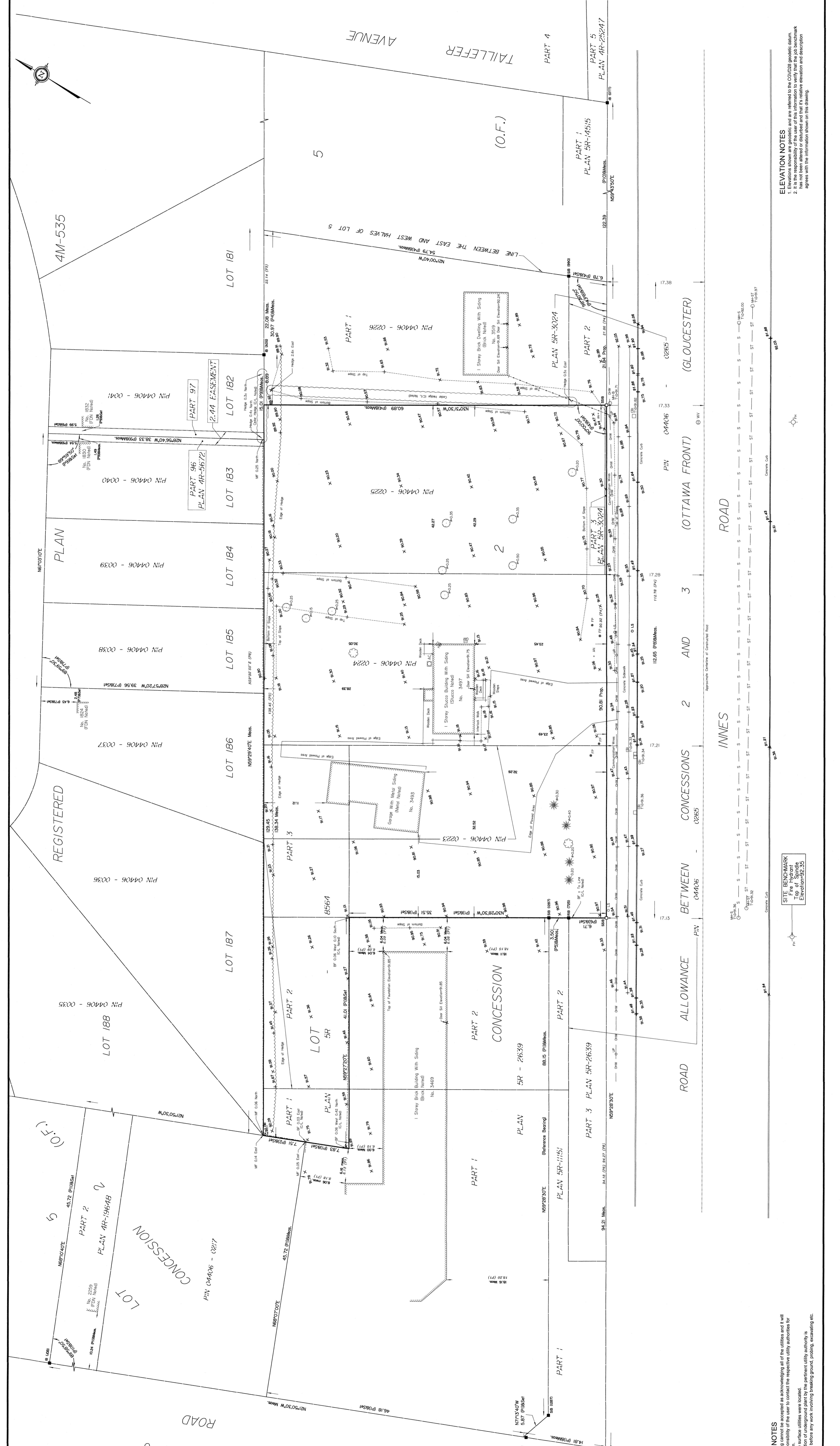
**UTILITY NOTES**  
 1. This drawing cannot be accepted as acknowledging all of the utilities and I will not be responsible for the user to contact the respective utility authorities for all of the utilities shown.  
 2. Only visible surface utilities were located.  
 3. A field location of underground utility is indicated by a dashed line and a dot.

**UTILITY NOTES**  
 1. This drawing cannot be accepted as acknowledging all of the utilities and I will not be responsible for the user to contact the respective utility authorities for all of the utilities shown.  
 2. Only visible surface utilities were located.  
 3. A field location of underground utility is indicated by a dashed line and a dot.

**UTILITY NOTES**  
 1. This drawing cannot be accepted as acknowledging all of the utilities and I will not be responsible for the user to contact the respective utility authorities for all of the utilities shown.  
 2. Only visible surface utilities were located.  
 3. A field location of underground utility is indicated by a dashed line and a dot.

**UTILITY NOTES**  
 1. This drawing cannot be accepted as acknowledging all of the utilities and I will not be responsible for the user to contact the respective utility authorities for all of the utilities shown.  
 2. Only visible surface utilities were located.  
 3. A field location of underground utility is indicated by a dashed line and a dot.

**UTILITY NOTES**  
 1. This drawing cannot be accepted as acknowledging all of the utilities and I will not be responsible for the user to contact the respective utility authorities for all of the utilities shown.  
 2. Only visible surface utilities were located.  
 3. A field location of underground utility is indicated by a dashed line and a dot.



PAGE 5 & 6

ROAD ALLOWANCE BETWEEN LOTS 5 & 6

**ANNIS, O'SULLIVAN, VOLLEBEK LTD.**  
 14 Moore Court #205  
 Ottawa, Ontario K2E 7S9  
 Phone (613) 237-0867 / Fax (613) 727-1079  
 www.aovltd.com

