

THIS DRAWING, OR PARTS THEREOF, MAY NOT BE REPRODUCED OR USED IN ANY FORM, BY ANY METHOD, FOR ANY PURPOSE, WITHOUT THE WRITTEN PERMISSION OF QUADRANT ENGINEERING.

THIS DRAWING IS TO BE READ IN CONJUNCTION WITH THE SPECIFICATION. WHERE CONFLICT ARISES THE MORE STRINGENT OF THE TWO SHALL APPLY.

COPYRIGHT © 2022 QUADRANT ENGINEERING.

THE CONTRACT DOCUMENTS ARE THE PROPERTY OF QUADRANT ENGINEERING (QE).

THE CONTRACTOR SHALL OBTAIN A FULL SET OF ALL CONSULTANTS' DESIGN DOCUMENTS PRIOR TO STARTING WORK.

QE BEARS NO RESPONSIBILITY FOR INTERPRETATIONS OF THESE DOCUMENTS BY OTHERS.

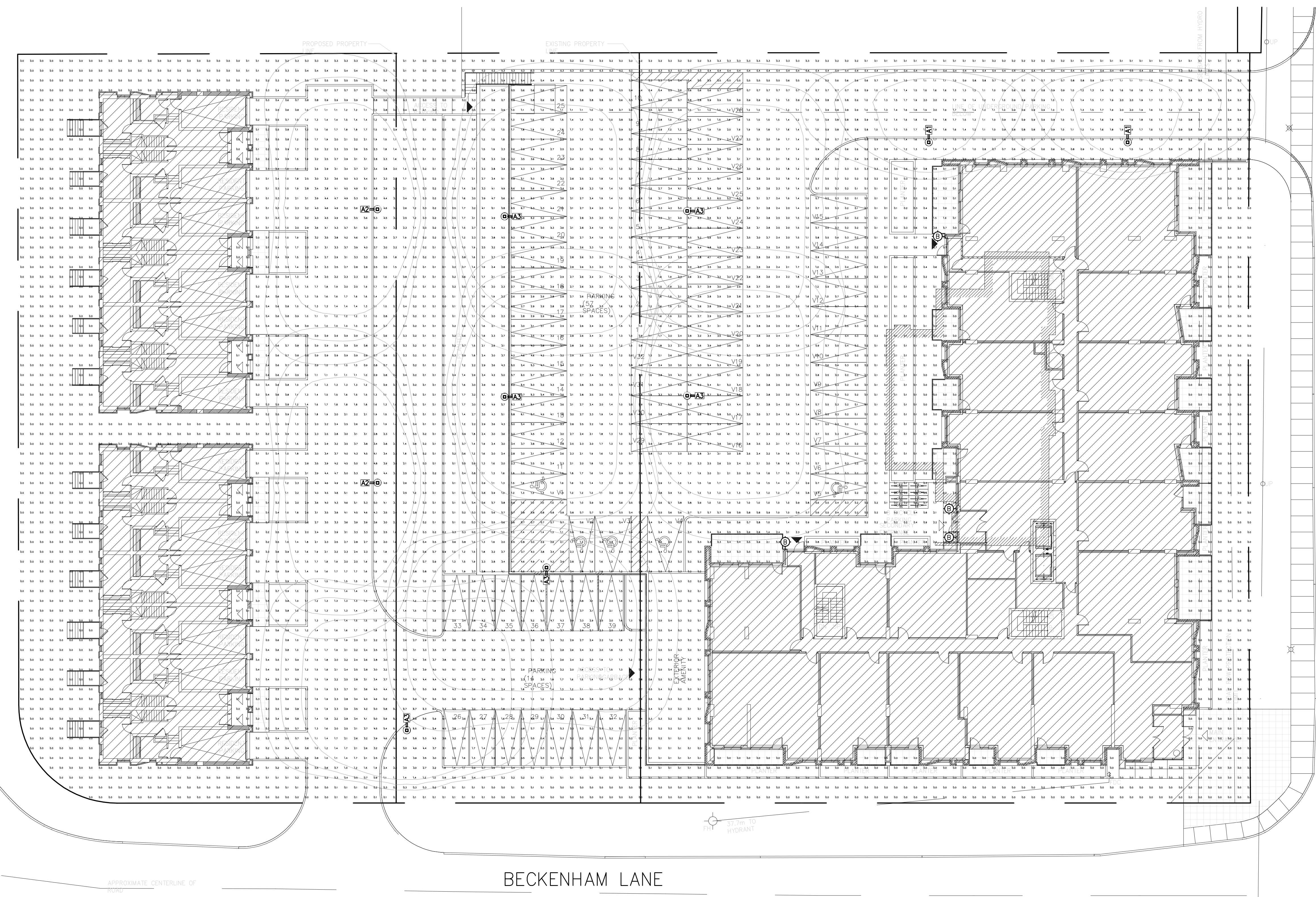
UPON WRITTEN APPLICATION QE WILL PROVIDE WRITTEN CLARIFICATION REGARDING THE INTENT OF THE CONTRACT DOCUMENTS.

QE REVIEW OF SHOP DRAWINGS SUBMITTED BY THE CONTRACTOR IS FOR DESIGN CONFORMANCE ONLY.

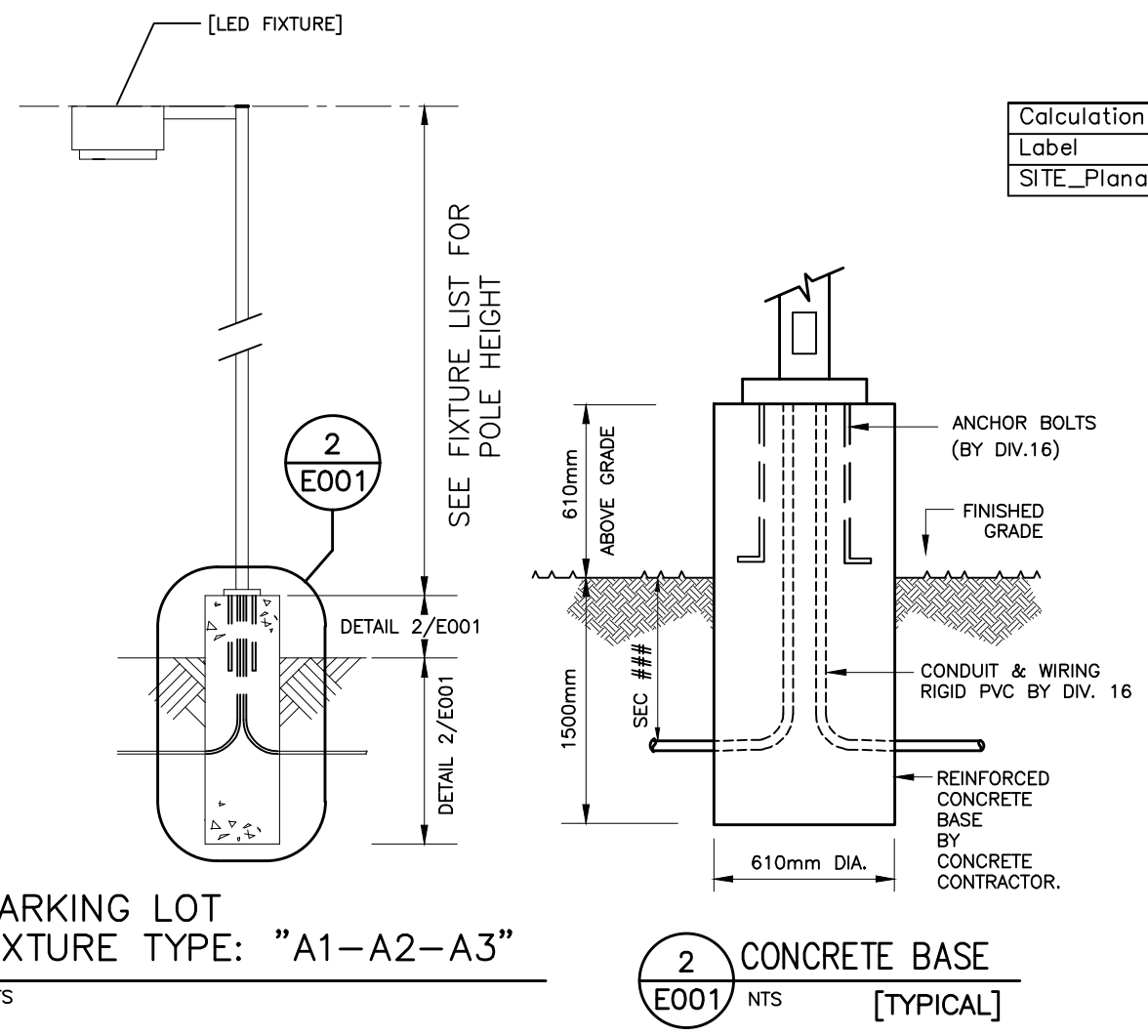
DRAWINGS ARE NOT TO BE SCALED FOR CONSTRUCTION. CONTRACTOR TO VERIFY ALL CONDITIONS AND DIMENSIONS, ON SITE, REQUIRED TO PERFORM THE WORK AND REPORT ANY DISCREPANCIES WITH THE CONTRACT DOCUMENTS TO THE DESIGN TEAM BEFORE COMMENCING WORK.

CEDAR ROAD

MONTREAL ROAD

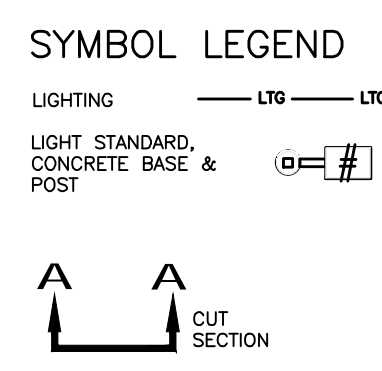


SITE PLAN
SCALE 1:200



Label	Calc Type	Units	Avg	Max	Min	Avg/Min	Max/Min
SITE_Planar	Illuminance	Fc	1.24	11.0	0.0	N.A.	N.A.

- SITE NOTES:**
- ELECTRICAL CONTRACTOR TO OBTAIN LOCATES AND COORDINATE WITH CIVIL CONTRACTOR & GAS UTILITY WHEN TRENCHING SERVICE FEEDERS INTO ELECTRICAL ROOMS INCLUDING TELEPHONE AND CABLE TV.
 - ALL EMPTY CONDUIT TO BE C/W PULL ROPE.



1765 MONTREAL ROAD - LIGHT FIXTURE SCHEDULE [OR APPROVED EQUIVALENT C/W PHOTOMETRICS]

ALL LIGHTING FIXTURES COMPLETE WITH LAMP (UNDER THIS CONTRACT).

SYM	QTY	POLE	IMAGE	LAMPS MAKE RELVW	VOLT	SPECIFICATIONS:
A1	2	16 FT	[Image]	17W 4000K LM 2270	120V	1) LOCATION: 2) MOUNTING: 3) DESCRIPTION: 4) DIMENSIONS: 5) MODEL: 6) CAT#:
A2	2	16 FT	[Image]	57W 4000K LM 7625	120V	1) LOCATION: 2) MOUNTING: 3) DESCRIPTION: 4) DIMENSIONS: 5) MODEL: 6) CAT#:
A3	6	16 FT	[Image]	77W 4000K LM 9900	120V	1) LOCATION: 2) MOUNTING: 3) DESCRIPTION: 4) DIMENSIONS: 5) MODEL: 6) CAT#:
B	4	5.5 FT	[Image]	27W 3000K LM 823	120V	1) LOCATION: 2) MOUNTING: 3) DESCRIPTION: 4) DIMENSIONS: 5) MODEL: 6) CAT#:

NO.	REVISION	DATE	BY
1	ISSUE FOR SITE LIGHTING	19 DEC 2022	RL

1765 MONTREAL ROAD

1765 MONTREAL ROAD,
OTTAWA, ONTARIO

QUADRANT
MECHANICAL AND ELECTRICAL ENGINEERING

210 COLONNADE ROAD S., UNIT 201, NEPEAN, ON, K2E 7L5
TEL: (613) 567-1487 E-MAIL: mail@quadrantengineering.ca

LICENCED PROFESSIONAL ENGINEER
2022-12-19
L.A. VAN DER LEEUW
100112624
PROVINCE OF ONTARIO

CURRENT DATE: SCALE 1:200
DRAWN RL
DESIGNED MC
CHECKED LVDL
PROJECT 21-Q085
DRAWING NUMBER E-001 OF

SITE PLAN - PHOTOMETRIC