

LOTS 85, 86 AND 87 REGISTERED PLAN M-27 CITY OF OTTAWA

FARLEY, SMITH & DENIS SURVEYING LTD. 2022



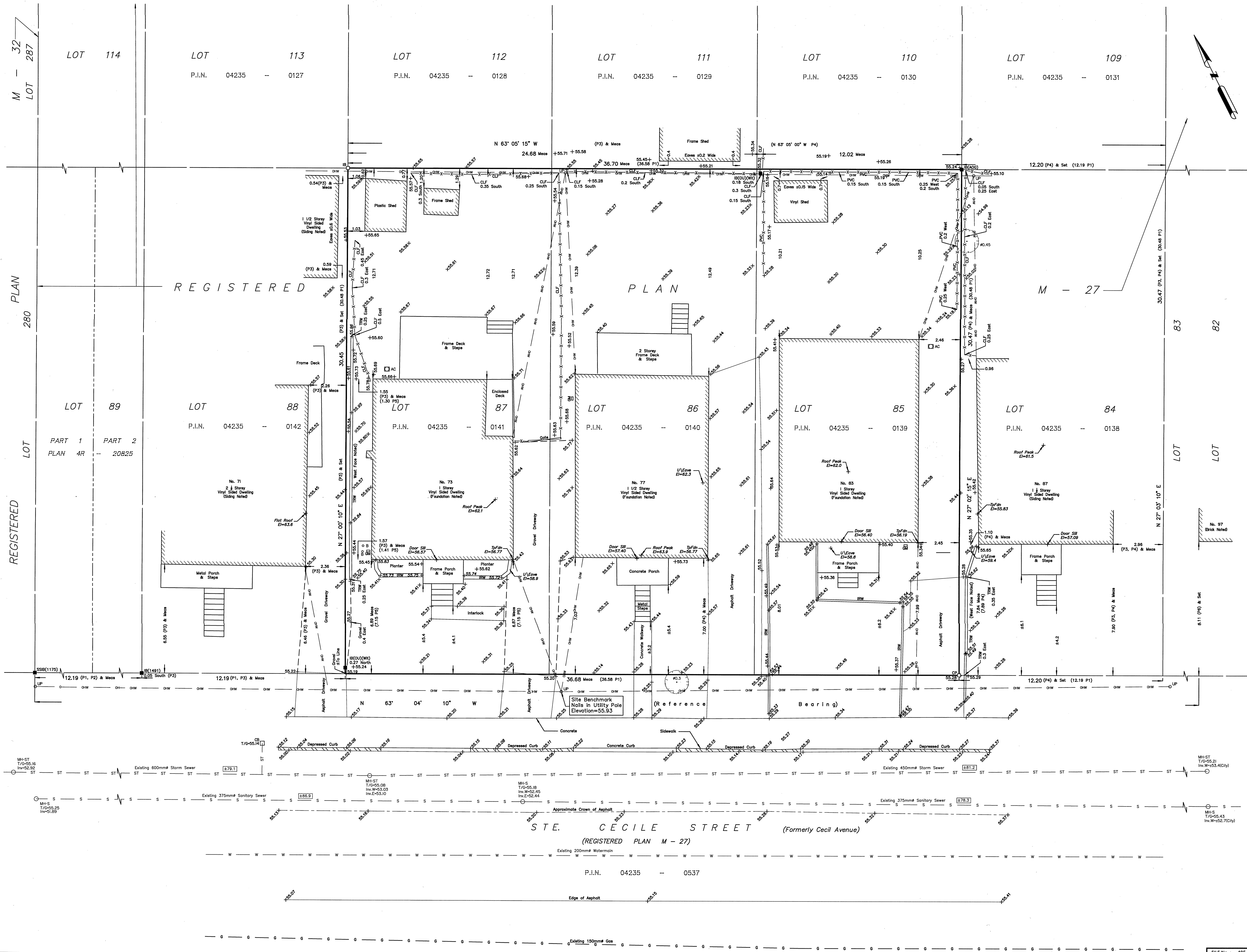
Metric Note Distances on this plan are in metres and can be converted to feet by dividing by 0.3048.

Bearing Note Bearings are astronomic and are referred to the northerly limit of Ste. Cecile Street having a bearing of N 63° 04' 10" W as shown on P6.

Elevation Notes 1. Elevations shown are geodetic and are referred to Geodetic Datum CGVD-1928 1978. (Monument No. 198434761) 2. It is the responsibility of the user of this information to verify that the job benchmark has not been altered or disturbed and that its relative elevation and description agrees with the information shown on this drawing.

Utility Notes 1. This drawing cannot be accepted as acknowledging all of the utilities and it will be the responsibility of the user to contact the respective utility authorities for confirmation. 2. Only visible surface utilities were located. 3. Underground utility data derived from City of Ottawa utility sheet reference: C-17-04, Contract No. S215-5114 Dwg. No. 025, 030. 4. Sanitary and storm sewer grades and inverts were compiled from: Field measurement City of Ottawa Utility Sheets. 5. A field location of underground plant by the pertinent utility authority is mandatory before any work involving breaking ground, probing, excavating etc.

Notes & Legend table with symbols for Denotes, Survey Monument Planted, Standard Iron Bar, Short Standard Iron Bar, Iron Bar, Concrete Pin, Origin Unknown, Witness Measured, Registered Plan M-27, Plan 4R-20825, Plan by (1992) dated April 13, 2012 (Job No. 51-12), Plan by (1990) dated July 8, 1993, Plan by (1990) dated August 14, 1962, Plan by (1990) dated April 6, 1983, Maintenance Hole (Storm), Maintenance Hole (Sanitary), Underground Storm Sewer, Underground Sanitary Sewer, Underground Water, Overhead Wires, Utility Pole, Catch Basin, Gas Meter, Bollard, Air Conditioner, Diameter, Chain Link Fence, Board Fence, Plastic/Vinyl Fence, Interlock Retaining Wall, Timber Retaining Wall, Invert, Top of Grate, Underside of Eave, U/Eave, Top of Foundation, Elevation, Centreline, Location of Elevations, Top of Concrete Curb Elevation, Property Line, Deciduous Trees - The Symbol shown denotes location and trunk diameter only. Size of its root system/overhead canopy may be smaller/larger than the symbol size depicted on this plan.



Site Area=1117.7 sq.m.

WARNING NO PERSON MAY COPY, REPRODUCE, DISTRIBUTE OR ALTER THIS PLAN IN WHOLE OR IN PART WITHOUT THE WRITTEN PERMISSION OF FARLEY, SMITH & DENIS SURVEYING LTD. © FARLEY, SMITH & DENIS SURVEYING LTD., 2022.

Surveyor's Certificate I certify that: 1. This survey and plan are correct and in accordance with the Surveys Act, the Surveyors Act and the Regulations made under them. 2. The survey was completed on the 27th day of September, 2022. [Signature] Jamie Leslie Ontario Land Surveyor

This plan of survey relates to AOLS Plan Submission Form Number V-32846 FARLEY, SMITH & DENIS SURVEYING LTD.

ONTARIO LAND SURVEYORS CANADA LAND SURVEYORS Unit 275, 30 COLONNADE ROAD, OTTAWA, ONTARIO K2E 7J6 TEL. (613) 727-8226 E-mail: fssurveys@bellnet.ca