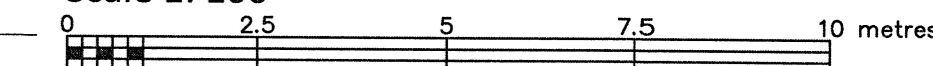


PART OF LOTS 6 & 7 REGISTERED PLAN 83 CITY OF OTTAWA

FARLEY, SMITH & DENIS SURVEYING LTD. 2022

Scale 1: 100



Metric Note

Distances on this plan are in metres and can be converted to feet by dividing by 0.3048.

Distance Note

Distances shown on this plan are ground distances and can be converted to grid distances by multiplying by the combined scale factor of 0.99994.

Bearing Note

Bearings are grid, referred to the westerly limit of Carruthers Avenue having a bearing of N 23° 42' 00" W as shown on Plan 4R-28679 and are referred to the Central Meridian of MTM Zone 9 (76° 30' West Longitude) Nad-83 (Original).

For bearing comparisons, a rotation of 0° 53' 25" counter-clockwise was applied to bearings on P3 & P5.

Elevation Notes

- 1. Elevations shown are geodetic and are referred to Geodetic Datum CGVD-1928 -1978. (Monument No. 197534238)
2. It is the responsibility of the user of this information to verify that the job benchmark has not been altered or disturbed and that it's relative elevation and description agrees with the information shown on this drawing.

Utility Notes

- 1. This drawing cannot be accepted as acknowledging all of the utilities and it will be the responsibility of the user to contact the respective utility authorities for confirmation.
2. Only visible surface utilities were located.
3. Underground utility data derived from City of Ottawa utility sheet reference: E-08-09 & E-08-13.
4. Sanitary and storm sewer grades and inverts were compiled from: City of Ottawa Public Utilities Registry.
5. A field location of underground plant by the pertinent utility authority is mandatory before any work involving breaking ground, probing, excavating etc.

Notes & Legend

Table with 2 columns: Symbol and Description. Includes symbols for Survey Monument Planted, Standard Iron Bar, Short Standard Iron Bar, Iron Bar, Iron Bar (0.3m Long), Cut Cross, Concrete Pin, Witness, Measured, Registered Plan 83, Plan 4R-28679, Plan 4R-33847, Plan by (JDB) dated October 20, 2015, Plan by (857) dated October 7, 2020, Maintenance Hole (Storm), Maintenance Hole (Sanitary), Underground Storm Sewer, Underground Water, Underground Hydro, Underground Gas, Overhead Wires, Utility Pole, Catch Basin Inlet, Water Stand Post, Wood Pole, Diameter, Chain Link Fence, Board Fence, Concrete Retaining Wall, Stone Retaining Wall, Invert, Invert from City of Ottawa Public Utilities Registry, Top of Grate, Underside of Eave, Top of Foundation, Centreline, Location of Elevations, Top of Concrete Curb/Retaining Wall Elevation, Property Line, Deciduous Tree, and Coniferous Tree.

Site Area = 429.8 sq.m.

WARNING: NO PERSON MAY COPY, REPRODUCE, DISTRIBUTE OR ALTER THIS PLAN IN WHOLE OR IN PART WITHOUT THE WRITTEN PERMISSION OF FARLEY, SMITH & DENIS SURVEYING LTD. © FARLEY, SMITH & DENIS SURVEYING LTD., 2022.

Surveyor's Certificate

- 1. This survey and plan are correct and in accordance with the Surveys Act, the Surveyors Act and the Regulations made under them.
2. The survey was completed on the 18th day of April, 2022.

April 22/22 Date

Jamie Leslie Ontario Land Surveyor

This plan of survey relates to AOLS Plan Submission Form Number V-25584.

FARLEY, SMITH & DENIS SURVEYING LTD.

ONTARIO LAND SURVEYORS CANADA LAND SURVEYORS

Unit 275, 30 COLONNADE ROAD, OTTAWA, ONTARIO K2E 7J6 TEL: (613) 727-8226 E-mail: fdsurveys@bellnet.ca

FILE No.: 152-22

