

METRIC DISTANCES AND COORDINATES SHOWN ON THIS PLAN ARE IN METRES AND CAN BE CONVERTED TO FEET BY DIVIDING BY 0.3048

COORDINATES WERE DERIVED FROM PLAN 4R-30388 AND ARE MTM ZONE 9, NAD83 ORIGINAL.

COORDINATES HAVE BEEN DETERMINED TO AN URBAN ACCURACY IN ACCORDANCE WITH SECTION 14(2) OF O.REG 216/10.

Table with 3 columns: POINT ID, NORTHING, EASTING. Rows include points 6, 171, 172, 173.

COORDINATES CANNOT IN THEMSELVES BE USED TO RE-ESTABLISH CORNERS OR BOUNDARIES SHOWN ON THIS PLAN.

Curve Table with 5 columns: LOT, Radius, Arc, Chord, Bearing. Rows include lots 30, 31, 32, 33, 57.

- LEGEND: SURVEY MONUMENT SET, SURVEY MONUMENT FOUND, STANDARD IRON BAR, SHORT STANDARD IRON BAR, IRON BAR, CUT CROSS, CONCRETE PIN, PLASTIC BAR, MAGNETIC NAIL, PLAN 4R-30388, SET, MEASURED, EXPROPRIATION, PLAN 4R-29613, REGISTERED PLAN 4M-1587, PLAN 4R-30911.

- (857) - FAIRHALL, MOFFATT & WOODLAND LIMITED, O.L.S. (A06) - ANNIS, O'SULLIVAN, VOLLEBEK LTD., O.L.S. (CITY) - CITY OF OTTAWA (A08) - J. D. BARNES, O.L.S. (P) - PROPERTY IDENTIFIER NUMBER (M) - PROJECT CONTROL MONUMENT

- NOTES: BEARINGS ARE GRID, DERIVED FROM PLAN 4R-30388, POINTS (T2) AND (T3) AND ARE REFERRED TO THE CENTRAL MERIDIAN, 78°30'W LONGITUDE MTM ZONE 9, NAD83 ORIGINAL. DISTANCES ARE GROUND AND CAN BE CONVERTED TO GRID BY MULTIPLYING BY THE COMBINED SCALE FACTOR 0.999919.

SURVEYOR'S CERTIFICATE: I CERTIFY THAT: THIS SURVEY AND PLAN ARE CORRECT AND IN ACCORDANCE WITH THE SURVEYS ACT, THE SURVEYORS ACT, THE LAND TITLES ACT AND THE REGULATIONS MADE UNDER THEM. THE SURVEY WAS COMPLETED APRIL 17TH, 2018. DATE: 2018/09/13. JOHN H. GUTH, ONTARIO LAND SURVEYOR.

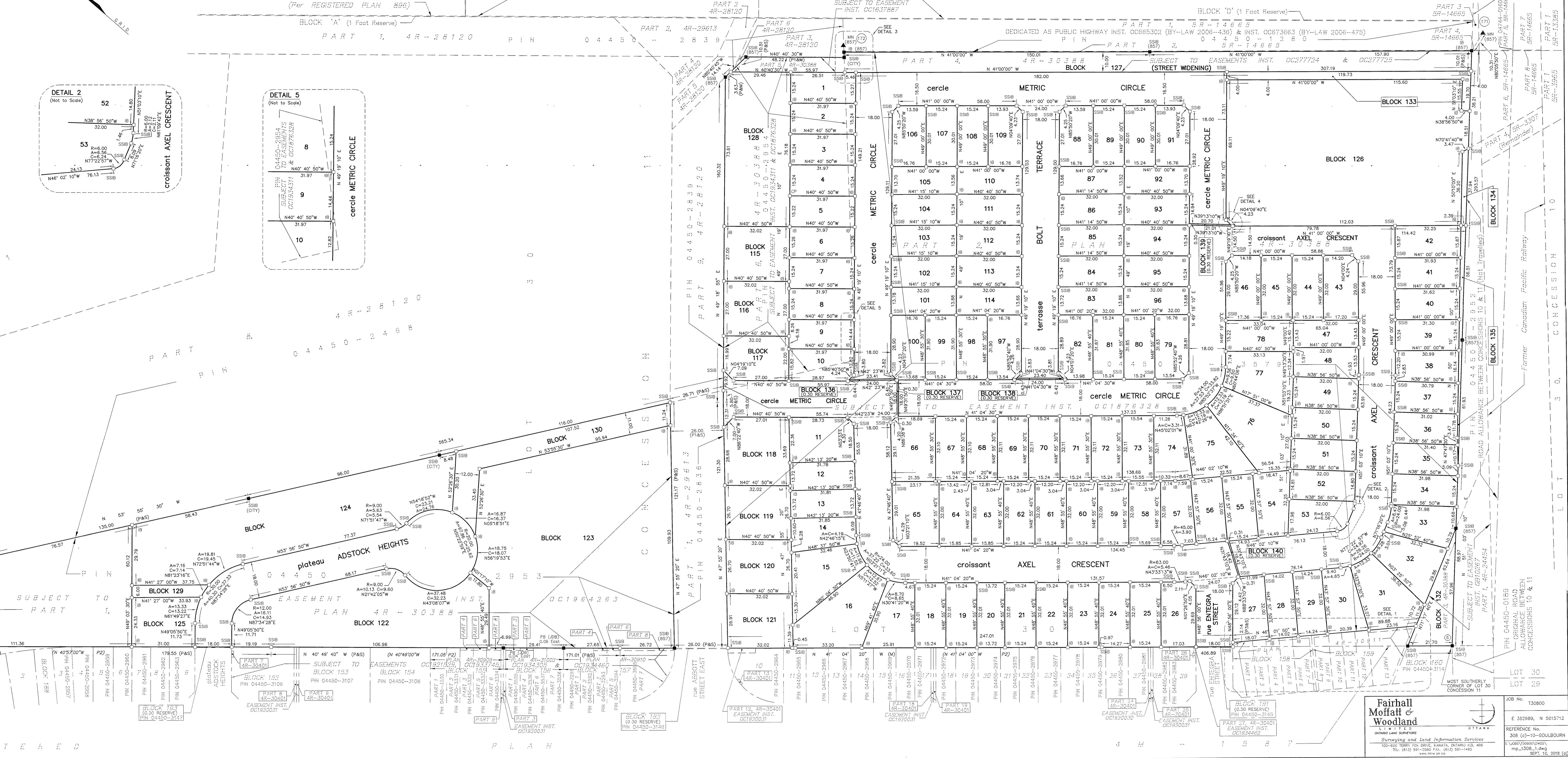
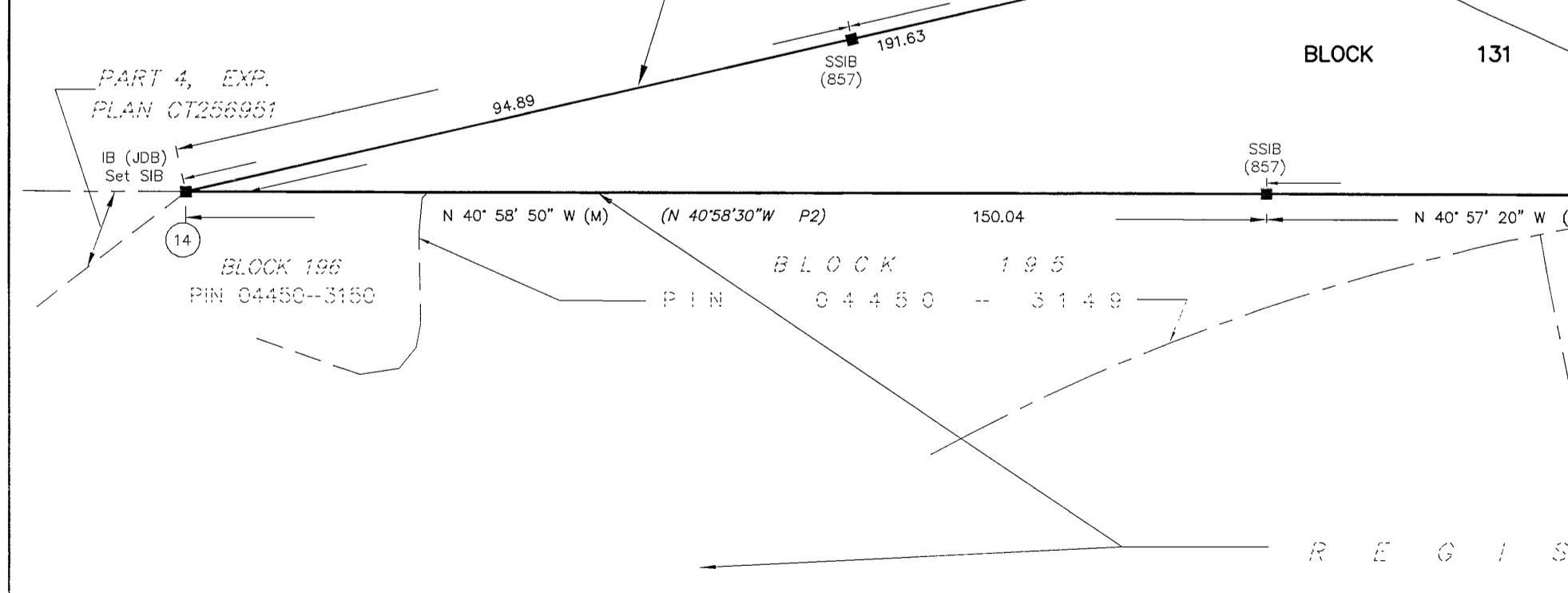
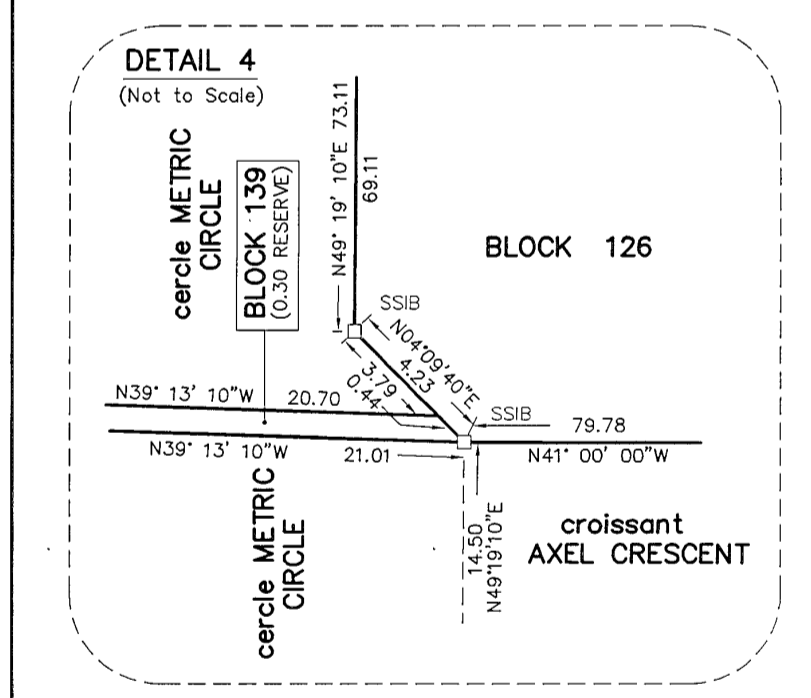
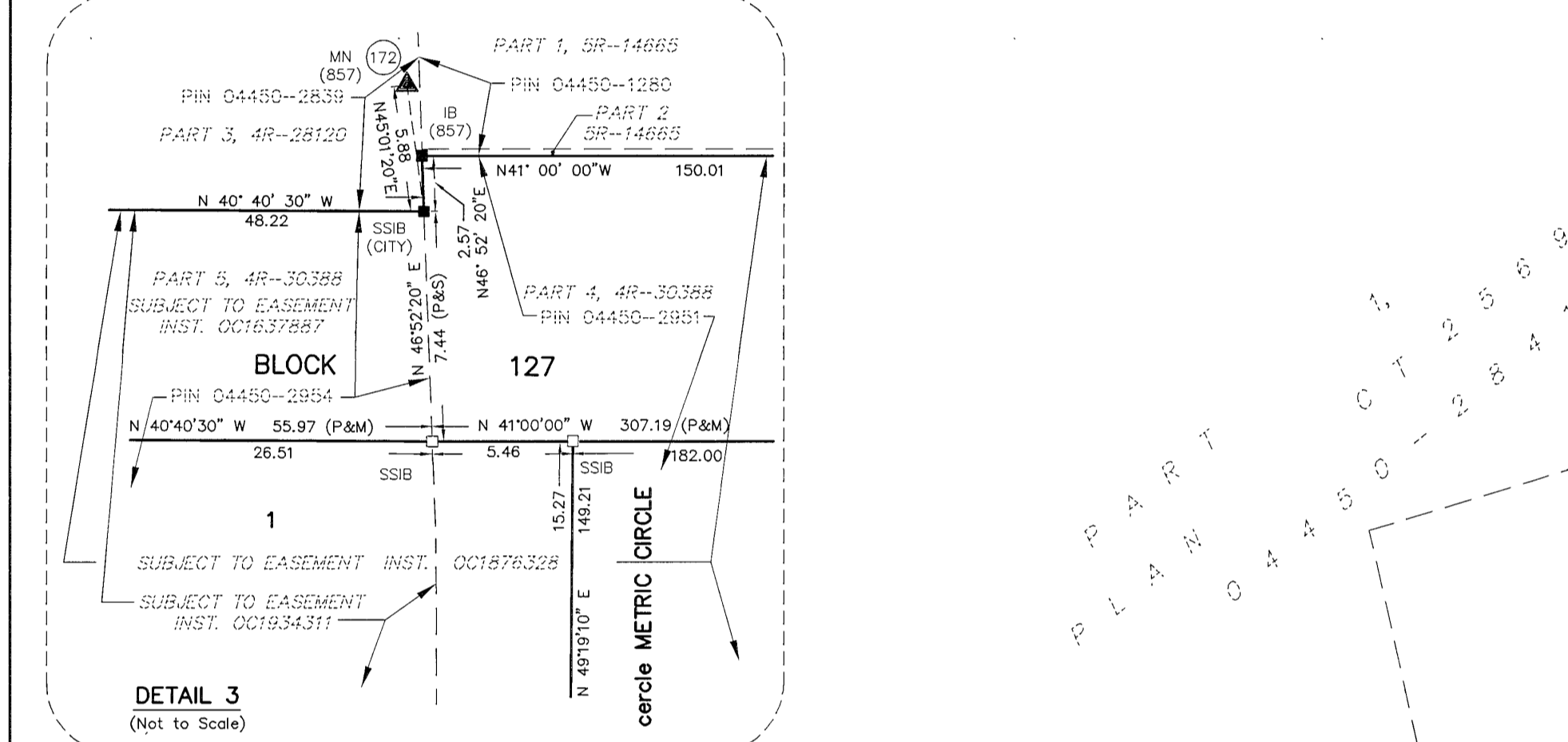
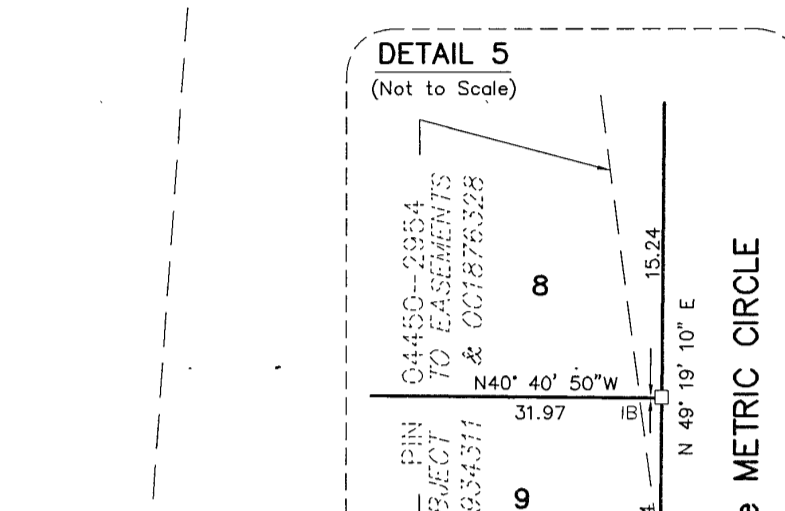
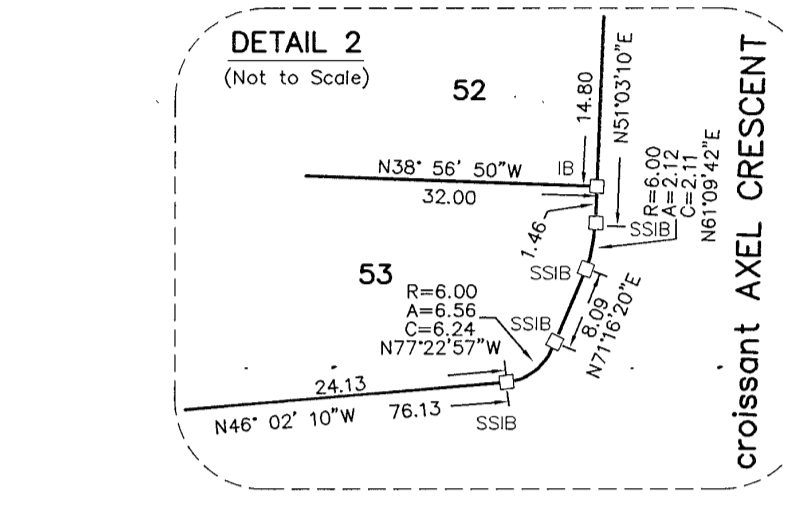
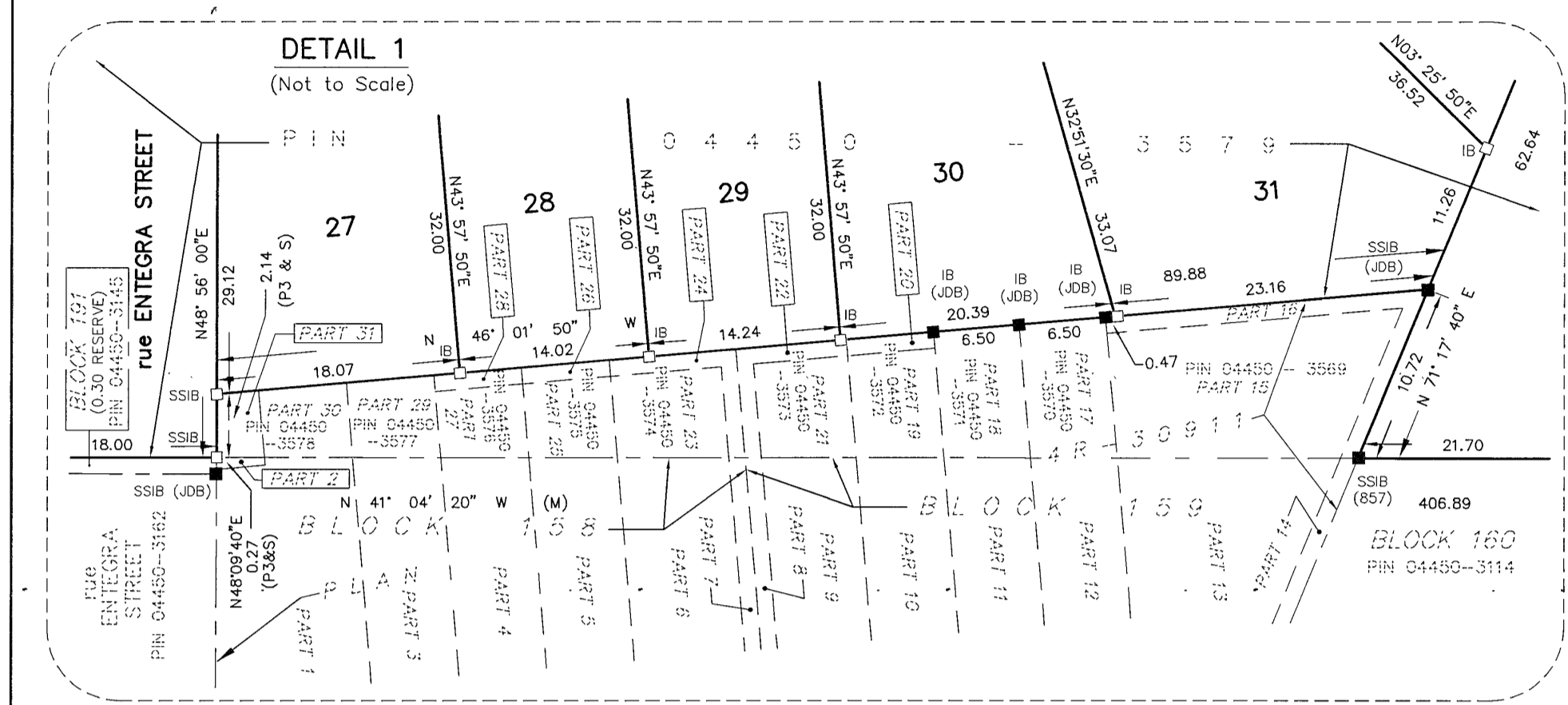
PLAN OF SUBDIVISION OF PART OF LOT 30 CONCESSION 11 GEOGRAPHIC TOWNSHIP OF GOULBOURN NOW CITY OF OTTAWA. SCALE 1:750. FAIRHALL, MOFFATT & WOODLAND LIMITED, ONTARIO LAND SURVEYORS.

OWNER'S CERTIFICATE: THIS IS TO CERTIFY THAT: LOTS 1 TO 114, BOTH INCLUSIVE, BLOCKS 115 TO 126, BOTH INCLUSIVE, BLOCKS 128 TO 135, BOTH INCLUSIVE, THE STREET WIDENING, NAMELY BLOCK 127, THE RESERVES NAMELY BLOCKS 136, 137, 138, 139 AND 140 AND THE STREETS, NAMELY CERLE METRIC CIRCLE, TERRASSE BOLT TERRACE, CROISSANT AXEL CRESCENT, PLATEAU ADSTOCK HEIGHTS AND RUE ENTERRA STREET HAVE BEEN LAID OUT IN ACCORDANCE WITH OUR INSTRUCTIONS. THE STREETS AND STREET WIDENING ARE DEDICATED TO CITY OF OTTAWA AS PUBLIC HIGHWAYS. DATED THIS 26th DAY OF SEPTEMBER 2018. STEPHEN WILLIS, MOP, RPP, GENERAL MANAGER, PLANNING, INFRASTRUCTURE AND ECONOMIC DEVELOPMENT DEPARTMENT, CITY OF OTTAWA.

APPROVED UNDER SECTION 51 OF THE PLANNING ACT BY THE CITY OF OTTAWA. THIS 20th DAY OF DECEMBER 2018. STEPHEN WILLIS, MOP, RPP, GENERAL MANAGER, PLANNING, INFRASTRUCTURE AND ECONOMIC DEVELOPMENT DEPARTMENT, CITY OF OTTAWA.

SCHEDULE OF EASEMENTS: Croissant AXEL CRESCENT, cercle METRIC CIRCLE, terrasse BOLT TERRACE, rue ENTERRA STREET, All of Lots 1 to 114, (Inclusive), Blocks 115 to 121 (Inclusive), Blocks 128, 127 & 126, Blocks 132 to 135, (Inclusive) and Reserve Blocks 136 to 140, (Inclusive). Subject to easement inst. OC1676328. Plateau ADSTOCK HEIGHTS, all of Blocks 122 to 125, (Inclusive) and Blocks 129, 130 & 131 subject to easement inst. OC1676328. All of Block 132 subject to easement inst. GB10267. All of Blocks 115, 116 & 128, Part of cercle METRIC CIRCLE, Lots 1 to 10 (Inclusive) and Block 117 subject to easement inst. OC1934311. Part of Block 127 subject to easement inst. OC1637887, OC277274, OC277225 & OC1934311.

PLAN 4M-1616. I certify that this Plan is registered in the Land Registry Office for the Land Titles Division of Ottawa - Carleton N° 4 at 11:04 a'clock on the 26th day of 01/2019 and entered in the parcel register for Property Identifier No's 04450-2953, 04450-2954 & 04450-3579 and required consents are registered as Plan Document No. CC2073223. Representative for Land Registrar.



Fairhall Moffatt & Woodland. Surveying and Land Information Services. 100-100 TERRY FOR DRIVE, KANATA, ONTARIO K2M 4K6. TEL: (416) 591-2888 FAX: (416) 591-1949. www.fmw.com