

Site Benchmark  
Concrete Pin in UP  
Elevation = 66.40

EXIST. CB  
TOP 65.74

EXIST. COMB MH  
TOP 65.74

EXIST. COMB MH  
TOP 66.03

EXIST. CB  
TOP 66.19

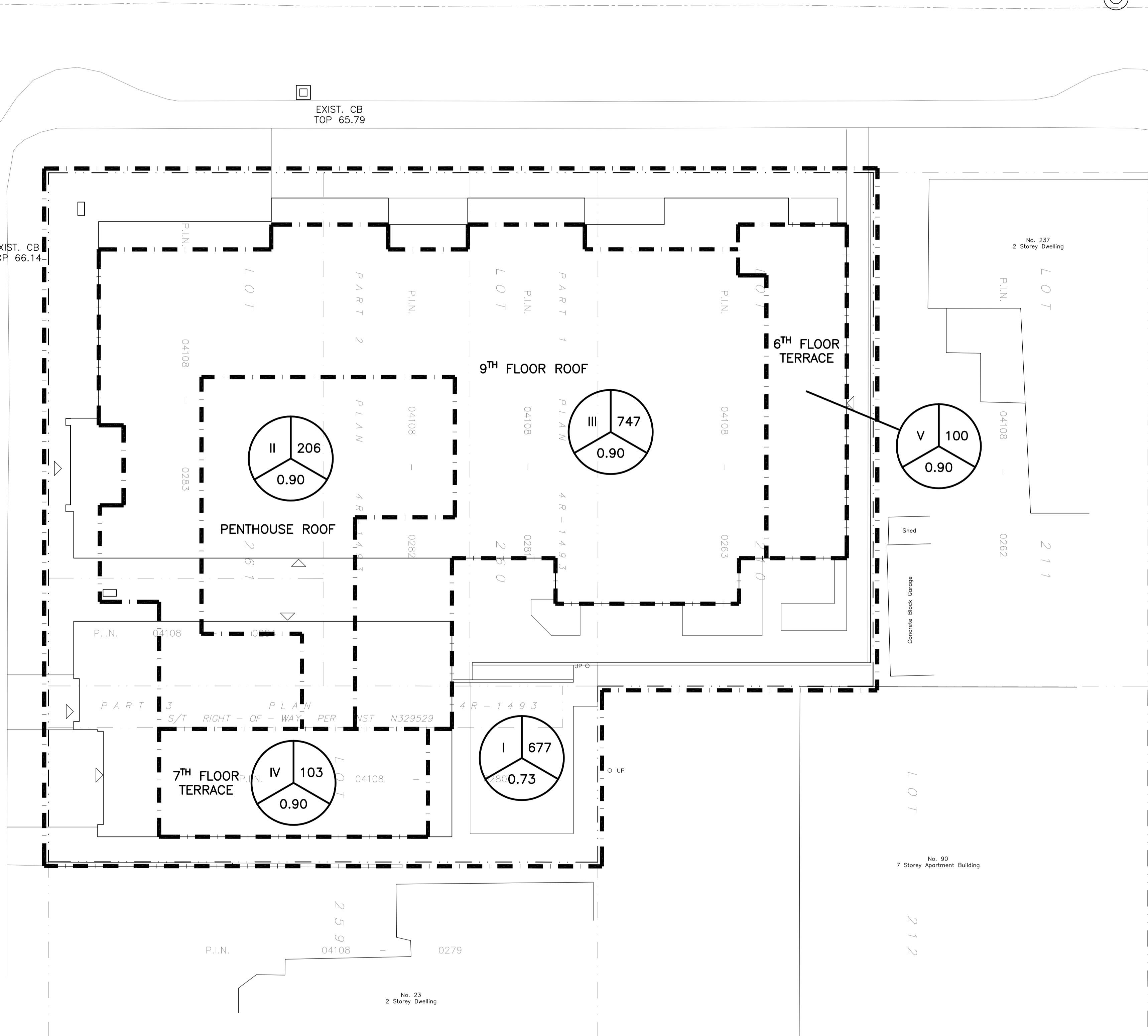
EXIST. CB  
TOP 66.14

EXIST. CB  
TOP 65.79

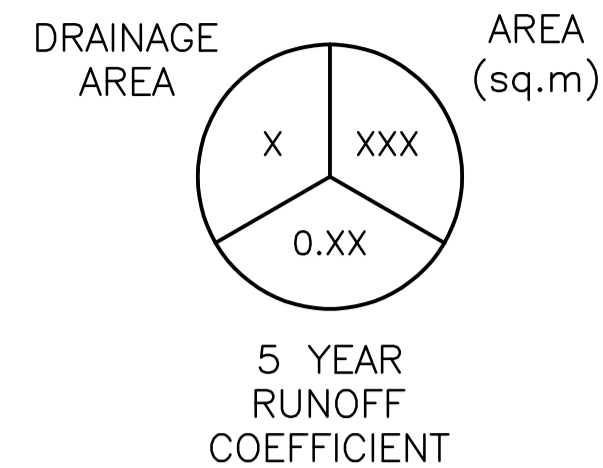
EXIST. COMB MH  
TOP 66.31

ROCHESTER STREET

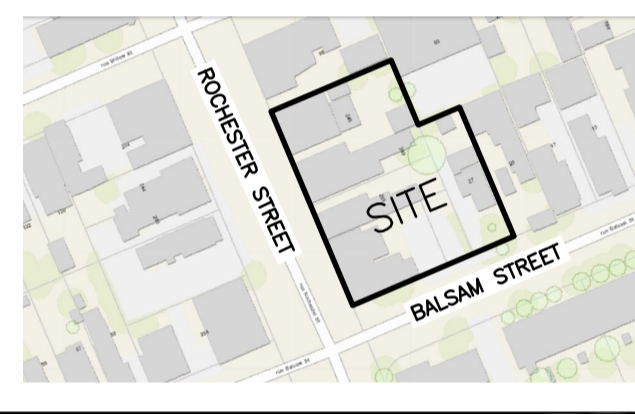
BALSAM STREET



LEGEND



KEY PLAN

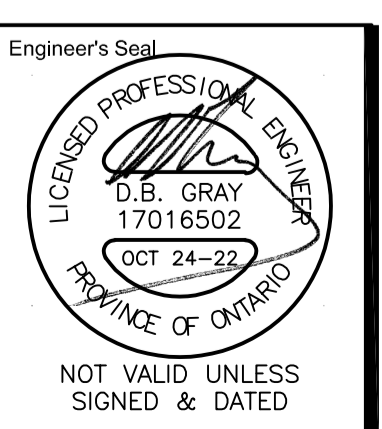


No.	DATE	REVISION
1	OCT 24-22	ISSUED FOR APPROVAL

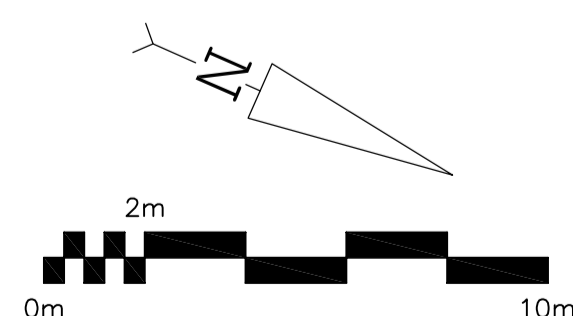
**D. B. GRAY ENGINEERING INC.**  
Stormwater Management - Grading & Drainage - Storm & Sanitary Sewers - Watermain  
700 Long Point Circle 613-425-8044  
Ottawa, Ontario d.gray@dbgrayengineering.com

Project  
**PROPOSED 9-STORY MIXED-USE BUILDING**  
245-263 ROCHESTER STREET & 27 BALSAM STREET  
OTTAWA, ONTARIO

DRAINAGE PLAN



Engineer's Seal  
Drawn D.B.G.  
H. Scale 1:150  
V. Scale  
Date SEP 1-22  
Job No. 22076  
Drawing No.  
**C-4**  
of 4



EXIST. COMB MH  
TOP 66.99