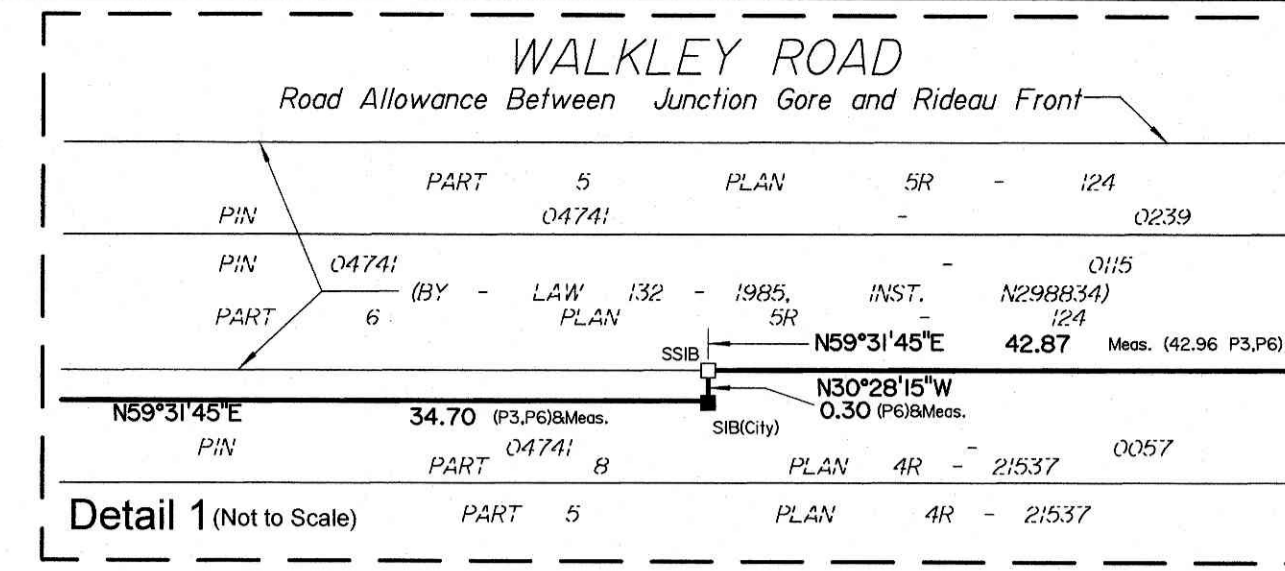


PART OF LOTS A and 1 CONCESSION 4 (RIDEAU FRONT) (Township of Gloucester) CITY OF OTTAWA

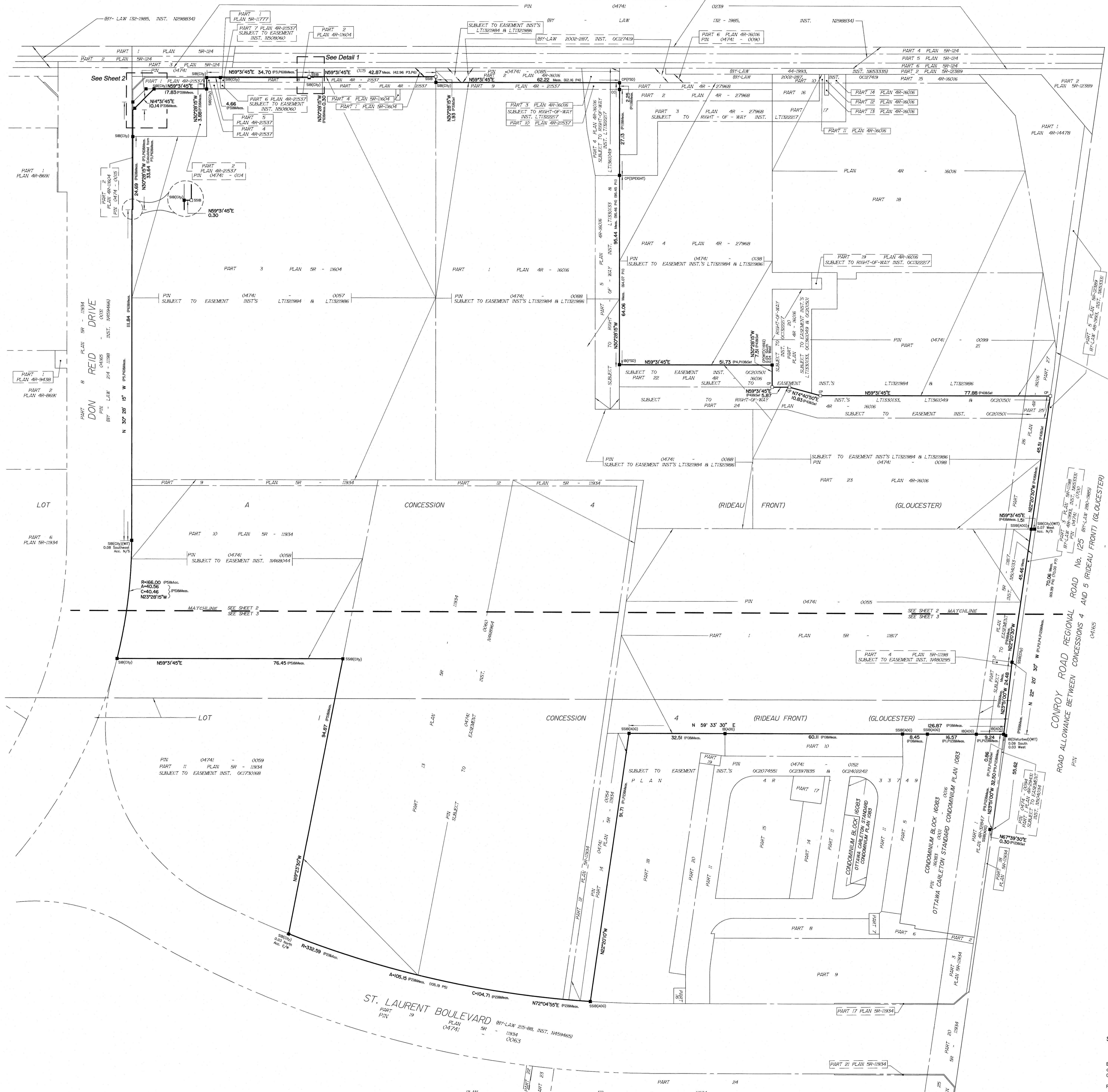
Prepared by Annis, O'Sullivan, Vollebek Ltd.

Scale 1:500

Metric DISTANCES SHOWN ON THIS PLAN ARE IN METRES AND CAN BE CONVERTED TO FEET BY DIVIDING BY 0.3048

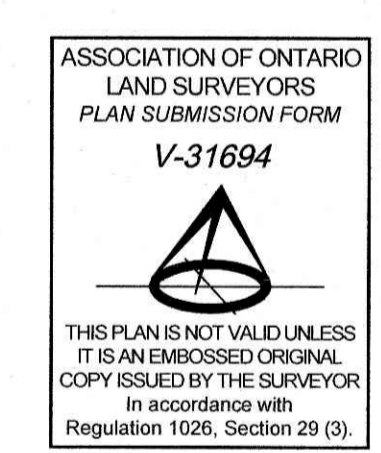


WALKLEY ROAD REGIONAL ROAD No. 74 Road Allowance Between Junction Gore and Rideau Front



DON REID DRIVE

CONROY ROAD REGIONAL ROAD No. 125 (RIDEAU FRONT) (GLOUCESTER)



Surveyor's Certificate I CERTIFY THAT: 1. This survey and plan are correct and in accordance with the Survey Act and the Surveyors Act and the regulations made under them. 2. The survey was completed on the 8th day of August, 2022. Date: 8/8/22 V. Annis, O'Sullivan, Vollebek Ltd. Ontario Land Surveyor

Notes & Legend table listing symbols for Survey Monument Planted, Survey Monument Found, Standard Iron Bar, Short Standard Iron Bar, Iron Bar, Cut Cross, Concrete Pin, Witness, Measured, Annis, O'Sullivan, Vollebek Ltd., Plan 4R-32749, Plan 4R-32847, Plan 4R-21537, Plan 4R-16016, Plan 5R-11934, Plan 5R-11604, Plan 5R-11817, Plan 5R-11158, Plan 4R-12389, Plan 4R-27968, Ottawa-Carleton Standard Condominium Plan 1063.

SITE AREA = 59587.6 m² Bearings are grid, derived from Can-Net 2016 Real Time Network GPS observations and are referenced to Specified Control Points 01919680105 and 019196434761, MTM Zone 9 (76°30' West Longitude) NAD-83 (original). Refer to Sheet 2 and Sheet 3 for encroachments.