



1 LANDSCAPE PLAN
L.1 SCALE 1:500

CLIENT
CLARIDGE HOMES

CONSULTANTS
CIVIL ENGINEERS: NOVATECH
240 Mutual Crescent Drive, Suite 200, Ottawa, ON
Tel: (613) 241-9841 K2M 1P6

- LEGEND
- PROPOSED LARGE DECIDUOUS TREE
 - PROPOSED SMALL DECIDUOUS TREE (JL, Japanese Tree Lilac)
 - PROPOSED SMALL DECIDUOUS TREE (AM, Amur Maple)
 - PROPOSED SMALL DECIDUOUS TREE (SB, Shadblow Serviceberry)

1	ISSUED FOR SITE PLAN APPROVAL	10/26/2022	LC	JL
No.	Issue	Date	DR	CK

JAMES B. LENNOX & ASSOCIATES INC.
LANDSCAPE ARCHITECTS
3332 CARLING AVE. OTTAWA, ONTARIO K2H 5A8
Tel: (613) 722-5168 Fax: (613) 722-5192

PROJECT
WALKLEY CONROY
Ottawa, ON.

DRAWING
LANDSCAPE PLAN

STAMP

SCALE
AS SHOWN

START DATE
OCTOBER, 2022

PROJECT NO.
XX-XXX

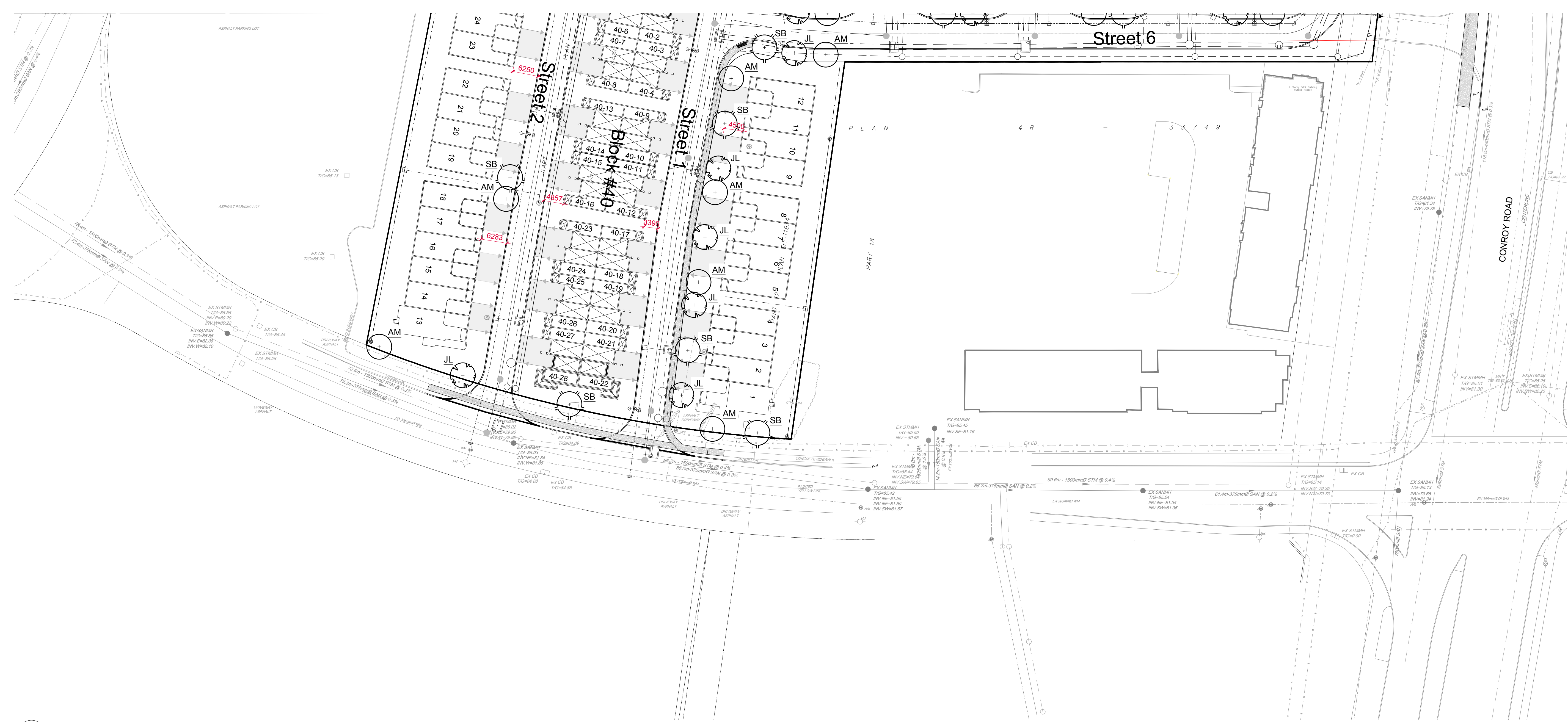
PROJECT NORTH

DRAWING NO.
L.1

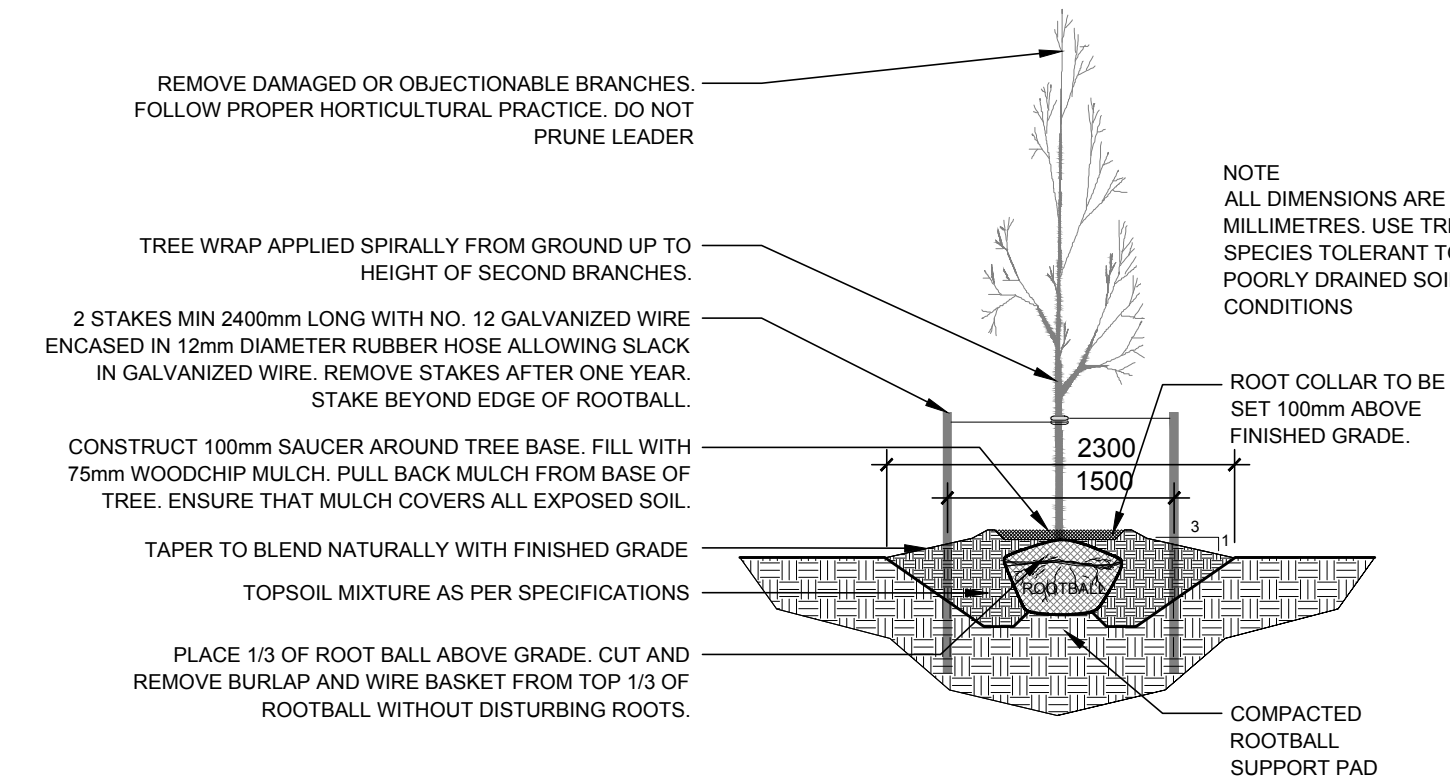
PLOT SIZE ARCH-D

PROPOSED PLANT LIST						
KEY	QTY	BOTANICAL NAME	COMMON NAME	SIZE	CONDITION	SPACING
DECIDUOUS TREES						
AM	16	<i>Acer ginnala</i>	Amur Maple	60mm dia.	B&B	
BA	6	<i>Tilia americana</i>	Basswood	60mm dia.	B&B	
GK	7	<i>Ginkgo biloba</i>	Maidenhair Tree	60mm dia.	B&B	
HB	4	<i>Celtis occidentalis</i>	Hackberry	60mm dia.	B&B	
HL	4	<i>Gleditsia triacanthos var. inermis 'Draves'</i>	Street Keeper Honeylocust	60mm dia.	B&B	
JL	15	<i>Syringa reticulata</i>	Japanese Tree Lilac	60mm dia.	B&B	
RM	7	<i>Acer rubrum</i>	Red Maple	60mm dia.	B&B	
SB	15	<i>Amelanchier canadensis</i>	Shadblow Serviceberry	60mm dia.	B&B	
SM	9	<i>Acer saccharum</i>	Sugar Maple	60mm dia.	B&B	

- GENERAL NOTES:**
- IT IS THE RESPONSIBILITY OF THE APPROPRIATE CONTRACTOR OR OFFICIAL TO REPORT ANY ERRORS, OMISSIONS OR DISCREPANCIES ON THIS PLAN WITH ACTUAL SITE CONDITIONS TO THE LANDSCAPE ARCHITECT BEFORE PROCEEDING WITH CONSTRUCTION.
 - THE CONTRACTOR IS TO NOTIFY ALL UTILITY COMPANIES AND AUTHORITIES PRIOR TO ANY EXCAVATION AND ASCERTAIN LOCATIONS OF UNDERGROUND SERVICES.
 - THE CONTRACTOR IS TO REINSTATE ALL AREAS AND ITEMS DAMAGED AS A RESULT OF CONSTRUCTION ACTIVITY.
 - THE CONTRACTOR IS TO COMPLY WITH ALL PERTINENT CODES AND BY-LAWS.
 - THE CONTRACTOR IS TO MAINTAIN A POSITIVE SURFACE RUN-OFF THROUGHOUT THE ENTIRE CONSTRUCTION PERIOD.
 - THE LANDSCAPE ARCHITECT IS NOT RESPONSIBLE FOR SUBSURFACE CONDITIONS.
 - THE CONTRACTOR IS TO IDENTIFY ALL EXISTING TREES TO REMAIN ON SITE WITH THE LANDSCAPE ARCHITECT PRIOR TO CONSTRUCTION.
 - THE CONTRACTOR IS TO STAKE THE PROPOSED LOCATION OF ALL PLANT MATERIAL IN CONJUNCTION WITH THE LANDSCAPE ARCHITECT PRIOR TO EXCAVATION.
 - MINIMUM DISTANCES FOR SELECTED DECIDUOUS TREES ARE AS FOLLOWS:
 - BUILDING FOUNDATIONS - 7.5M
 - SIDEWALKS - 1.5M
 - PUBLIC STREETS - 2.5M
 - UNDERGROUND INFRASTRUCTURE - 2.0M
 - ALL TREES WITHIN 1M OF UNDERGROUND UTILITY TRENCHES ARE TO BE EXCAVATED BY HAND.
 - REMOVE ALL PROTECTIVE WRAPPING FROM TREE TRUNKS AFTER INSTALLATION.
 - STAKING OF TREES SHALL ONLY BE PERFORMED IF NECESSARY.
 - ENSURE THAT MULCH IS PULLED BACK A MINIMUM DISTANCE OF 75MM FROM BASE OF TREE TRUNK.



1 LANDSCAPE PLAN
L.2 SCALE 1:500



2 DECIDUOUS TREE PLANTING
L.2 N.T.S.

- GENERAL NOTES:**
- IT IS THE RESPONSIBILITY OF THE APPROPRIATE CONTRACTOR OR OFFICIAL TO REPORT ANY ERRORS, OMISSIONS OR DISCREPANCIES ON THIS PLAN WITH ACTUAL SITE CONDITIONS TO THE LANDSCAPE ARCHITECT BEFORE PROCEEDING WITH CONSTRUCTION.
 - THE CONTRACTOR IS TO NOTIFY ALL UTILITY COMPANIES AND AUTHORITIES PRIOR TO ANY EXCAVATION AND ASCERTAIN LOCATIONS OF UNDERGROUND SERVICES.
 - THE CONTRACTOR IS TO REINSTATE ALL AREAS AND ITEMS DAMAGED AS A RESULT OF CONSTRUCTION ACTIVITY.
 - THE CONTRACTOR IS TO COMPLY WITH ALL PERTINENT CODES AND BY-LAWS.
 - THE CONTRACTOR IS TO MAINTAIN A POSITIVE SURFACE RUN-OFF THROUGHOUT THE ENTIRE CONSTRUCTION PERIOD.
 - THE LANDSCAPE ARCHITECT IS NOT RESPONSIBLE FOR SUBSURFACE CONDITIONS.
 - THE CONTRACTOR IS TO IDENTIFY ALL EXISTING TREES TO REMAIN ON SITE WITH THE LANDSCAPE ARCHITECT PRIOR TO CONSTRUCTION.
 - THE CONTRACTOR IS TO STAKE THE PROPOSED LOCATION OF ALL PLANT MATERIAL IN CONJUNCTION WITH THE LANDSCAPE ARCHITECT PRIOR TO EXCAVATION.
 - MINIMUM DISTANCES FOR SELECTED DECIDUOUS TREES ARE AS FOLLOWS:
 - BUILDING FOUNDATIONS - 7.5M
 - SIDEWALKS - 1.5M
 - PUBLIC STREETS - 2.5M
 - UNDERGROUND INFRASTRUCTURE - 2.0M
 - ALL TREES WITHIN 1M OF UNDERGROUND UTILITY TRENCHES ARE TO BE EXCAVATED BY HAND.
 - REMOVE ALL PROTECTIVE WRAPPING FROM TREE TRUNKS AFTER INSTALLATION.
 - STAKING OF TREES SHALL ONLY BE PERFORMED IF NECESSARY.
 - ENSURE THAT MULCH IS PULLED BACK A MINIMUM DISTANCE OF 75MM FROM BASE OF TREE TRUNK.

CLIENT
CLARIDGE HOMES

CONSULTANTS
CIVIL ENGINEERS: NOVATECH
240 Mutual Crescent Drive, Suite 200, Ottawa, ON
Tel: (613) 241-9841 K2M 1P6

LEGEND
 PROPOSED LARGE DECIDUOUS TREE
 PROPOSED SMALL DECIDUOUS TREE (JL Japanese Tree Lilac)
 PROPOSED SMALL DECIDUOUS TREE (AM Amur Maple)
 PROPOSED SMALL DECIDUOUS TREE (SB Shadblow Serviceberry)

No.	Issue	Date	DR	CK
1	ISSUED FOR SITE PLAN APPROVAL	10/26/2022	LC	JL

JAMES B. LENNOX & ASSOCIATES INC.
LANDSCAPE ARCHITECTS
3332 CARLING AVE. OTTAWA, ONTARIO K2H 5A8
Tel. (613) 722-5168 Fax. (866) 343-3942

PROJECT
WALKLEY CONROY
Ottawa, ON.

DRAWING
LANDSCAPE PLAN

STAMP

SCALE
AS SHOWN

START DATE
OCTOBER, 2022

PROJECT NO.
XX-XXX

PROJECT NORTH

DRAWING NO.
L.1

PLOT SIZE ARCH-D