

Distances shown on this plan are ground distances and can be converted to grid distances by multiplying by the combined scale factor of 0.99991.

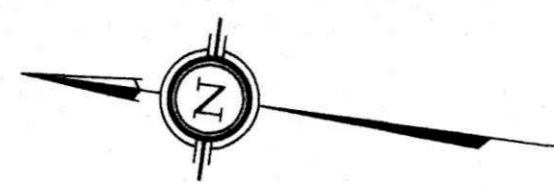
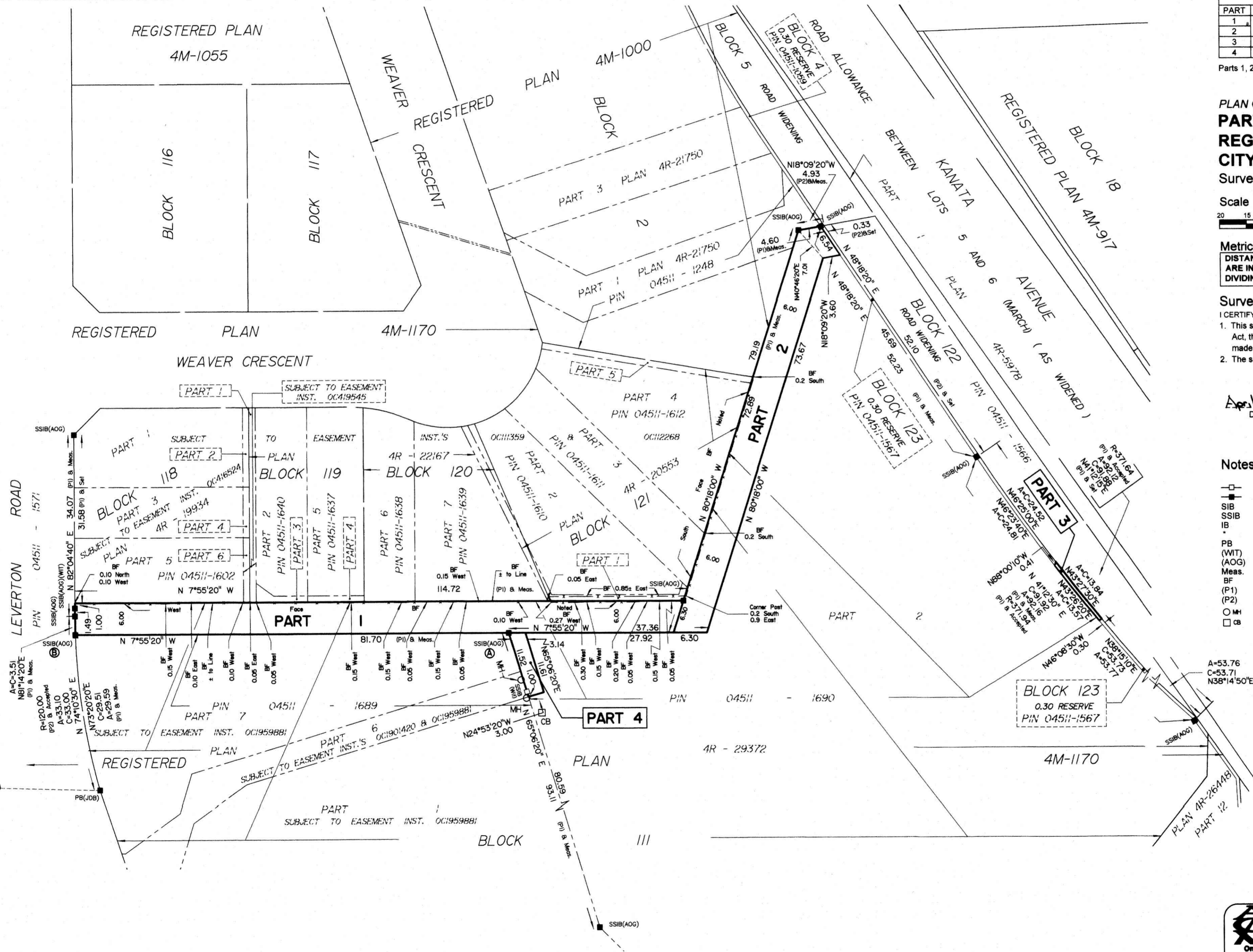
Bearings are grid, and are referred to MTM Zone 9 (76°30' West Longitude) NAD-83 (original).

Coordinates are derived from Can-Net 2016 Real Time Network GPS observations referenced to Specified Control Points 01919680037 and 01919791051, MTM Zone 9 (76°30' West Longitude) NAD-83 (original).

Coordinate values are to urban accuracy in accordance with O. Reg. 216/10.

01919680037 Northing 5023507.89 Easting 351533.87
 01919791051 Northing 5032569.51 Easting 343633.72
 Point A Northing 5020662.67 Easting 349801.65
 Point B Northing 5020585.47 Easting 349812.40

Caution: Coordinates cannot, in themselves, be used to re-establish corners or boundaries shown on this plan.



I REQUIRE THIS PLAN TO BE DEPOSITED UNDER THE LAND TITLES ACT.
 DATE: April 1, 2020

PLAN 4R-32776
 RECEIVED AND DEPOSITED
 DATE: April 02, 2020

Andre Roy
 ANDRE ROY
 ONTARIO LAND SURVEYOR

Guylaine Noel
 REPRESENTATIVE FOR
 LAND REGISTRAR FOR THE
 LAND TITLES DIVISION OF
 OTTAWA-CARLETON NO. 4.

SCHEDULE			
PART	BLOCK	PLAN	PIN
1	PART OF 111	4M-1170	PART OF 04511-1690
2	PART OF 123		PART OF 04511-1567
3	PART OF 111		PART OF 04511-1690
4	PART OF 111		PART OF 04511-1690

Parts 1, 2 and 4 comprise part of PIN 04511-1690.

PLAN OF SURVEY OF
PART OF BLOCKS 111 and 123
REGISTERED PLAN 4M-1170
CITY OF OTTAWA
 Surveyed by Annis, O'Sullivan, Vollebek Ltd.

Scale 1 : 500

Metric
 DISTANCES AND COORDINATES SHOWN ON THIS PLAN
 ARE IN METRES AND CAN BE CONVERTED TO FEET BY
 DIVIDING BY 0.3048.

Surveyor's Certificate
 I CERTIFY THAT:
 1. This survey and plan are correct and in accordance with the Surveys Act, the Surveyors Act and the Land Titles Act and the regulations made under them.
 2. The survey was completed on the 23rd day of March, 2020.

April 1, 2020
 Date

Andre Roy
 Ontario Land Surveyor

Notes & Legend

□	Denotes	Survey Monument Planted
■	"	Survey Monument Found
SIB	"	Standard Iron Bar
SSIB	"	Short Standard Iron Bar
IB	"	Iron Bar
*	"	Survey Monument (0.3 Long)
PB	"	Plastic Bar
(WIT)	"	Witness
(AOG)	"	Annis, O'Sullivan, Vollebek Ltd.
Meas.	"	Measured
BF	"	Board Fence
(P1)	"	Plan 4R-29372
(P2)	"	Registered Plan 4M-1170
○ MH	"	Maintenance Hole (Unidentified)
□ CB	"	Catch Basin

ANNIS, O'SULLIVAN, VOLLEBEK LTD.
 14 Concourse Gate, Suite 500
 Nepean, Ont. K2E 7S6
 Phone: (613) 727-0850 / Fax: (613) 727-1079
 Email: Nepean@avotltd.com

Y:\BANDALEKAR\KATIA\2014-19\FINAL\2014-19_Ultimate_Pt_Bk_111_4M-1170.R.F.dwg, 4/1/2020 11:53:31 AM, HP PagePlotter, 0.000, 0.00