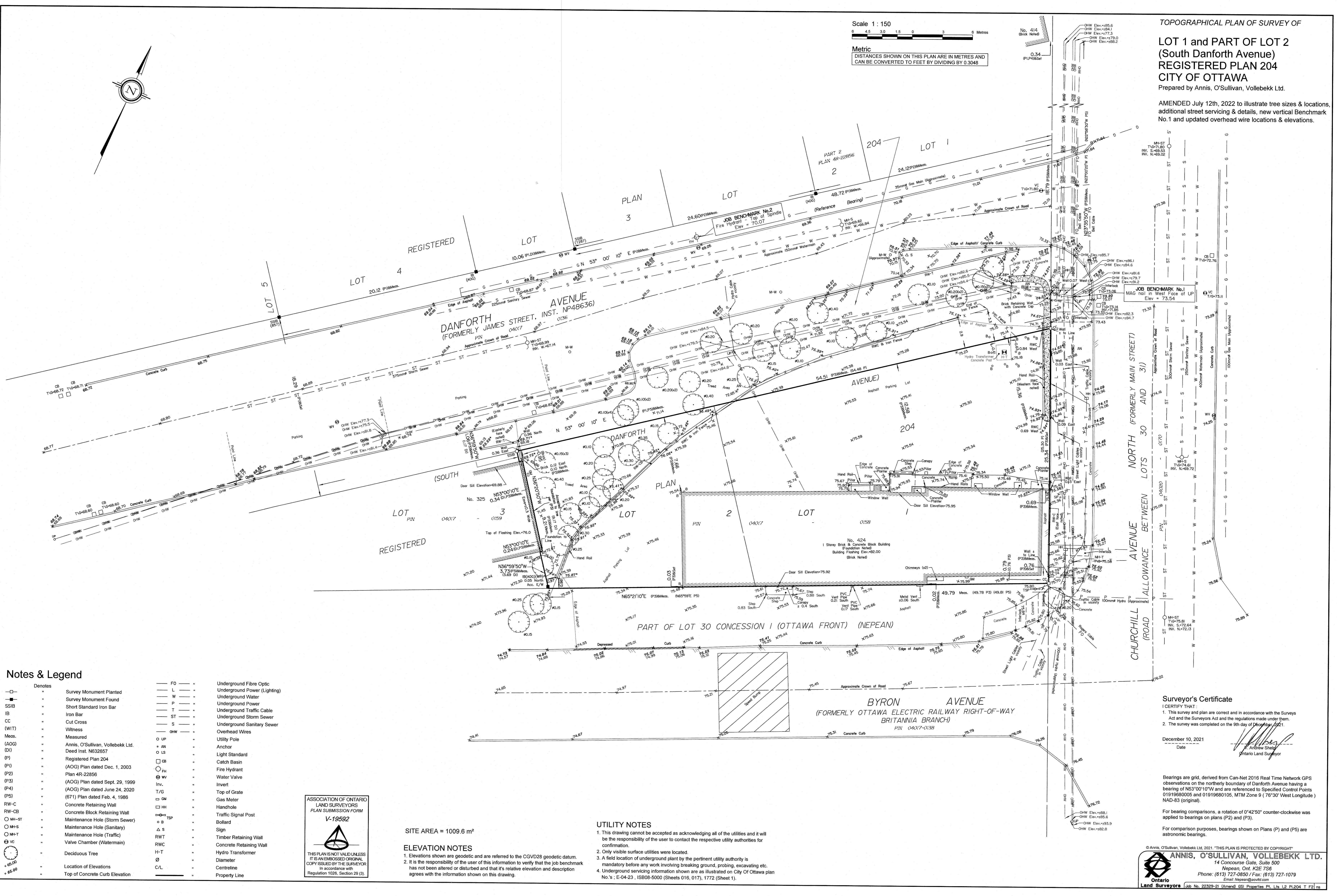
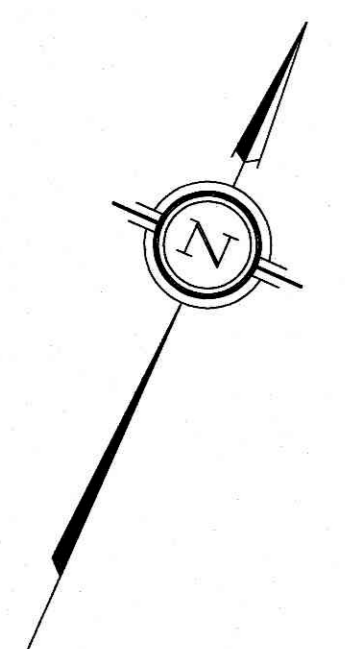


LOT 1 and PART OF LOT 2 (South Danforth Avenue) REGISTERED PLAN 204 CITY OF OTTAWA

Prepared by Annis, O'Sullivan, Vollebek Ltd.

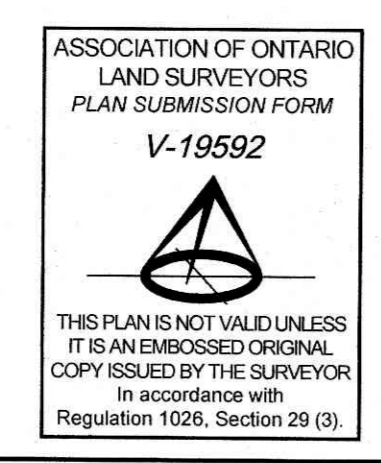
AMENDED July 12th, 2022 to illustrate tree sizes & locations, additional street servicing & details, new vertical Benchmark No. 1 and updated overhead wire locations & elevations.

Scale 1:150 Metric DISTANCES SHOWN ON THIS PLAN ARE IN METRES AND CAN BE CONVERTED TO FEET BY DIVIDING BY 0.3048



Notes & Legend

- Denotes Survey Monument Planted, Survey Monument Found, Short Standard Iron Bar, Iron Bar, Cut Cross, Witness, Measured, Anis, O'Sullivan, Vollebek Ltd., Registered Plan 204, (AOG) Plan dated Dec. 1, 2003, (AOG) Plan dated Sept. 29, 1999, (AOG) Plan dated June 24, 2020, (671) Plan dated Feb. 4, 1986, Concrete Retaining Wall, Concrete Block Retaining Wall, Maintenance Hole (Storm Sewer), Maintenance Hole (Sanitary), Maintenance Hole (Traffic), Valve Chamber (Watermain), Deciduous Tree, Location of Elevations, Top of Concrete Curb Elevation, FG, L, W, P, T, ST, S, OHW, UP, AN, LS, CB, FH, WV, Inv, T/G, GM, HH, TRSP, B, S, RWT, RWC, H-T, D, C/L, Property Line, Underground Fibre Optic, Underground Power (Lighting), Underground Water, Underground Power, Underground Traffic Cable, Underground Storm Sewer, Underground Sanitary Sewer, Overhead Wires, Utility Pole, Anchor, Light Standard, Catch Basin, Fire Hydrant, Water Valve, Invert, Top of Grate, Gas Meter, Handhole, Traffic Signal Post, Bollard, Sign, Timber Retaining Wall, Concrete Retaining Wall, Hydro Transformer, Diameter, Centreline



SITE AREA = 1009.6 m²

ELEVATION NOTES 1. Elevations shown are geodetic and are referred to the CGVD28 geodetic datum. 2. It is the responsibility of the user of this information to verify that the job benchmark has not been altered or disturbed and that its relative elevation and description agrees with the information shown on this drawing.

UTILITY NOTES 1. This drawing cannot be accepted as acknowledging all of the utilities and it will be the responsibility of the user to contact the respective utility authorities for confirmation. 2. Only visible surface utilities were located. 3. A field location of underground plant by the pertinent utility authority is mandatory before any work involving breaking ground, probing, excavating etc. 4. Underground servicing information shown are as illustrated on City of Ottawa plan No.'s: E-04-23, ISB08-5000 (Sheets 016, 017), 1772 (Sheet 1).

Surveyor's Certificate I CERTIFY THAT: 1. This survey and plan are correct and in accordance with the Surveys Act and the Surveyors Act and the regulations made under them. 2. The survey was completed on the 9th day of December, 2021. December 10, 2021 Date Andrew Sheld Ontario Land Surveyor

ANIS, O'SULLIVAN, VOLLEBEK LTD. 14 Concourse Gate, Suite 500 Nepean, Ont. K2E 7S6 Phone: (613) 727-0850 / Fax: (613) 727-1079 Email: nepean@anniso.com