

PART OF LOT 3 REGISTERED PLAN 747 CITY OF OTTAWA

Prepared by Annis, O'Sullivan, Vollebakk Ltd.

Scale 1:300



Metric DISTANCES SHOWN ON THIS PLAN ARE IN METRES AND CAN BE CONVERTED TO FEET BY DIVIDING BY 0.3048

Date: Feb 15, 2013 E.H. Herweyer O.L.S.

Notes & Legend

- Denotes: Maintenance Hole (Traffic), Maintenance Hole (Hydro), Maintenance Hole (Storm Sewer), Maintenance Hole (Bell Telephone), Catch Basin, Ditch Inlet, Plastic Drain Pipe, Handhole, Top of Pipe, Bollard, Sign, Chain Link Fence, Metal Fence (Wrought Iron), Concrete Retaining Wall, Wood Pole, Concrete Pole, Anchor, Deciduous Tree, Coniferous Tree, Fire Hydrant, Water Valve, Fuel Pump on Concrete Base, Diameter, Location of Elevations, Location of Elevations (Top of Wall), Location of Elevations (Top of Curb), Top of Grate, Centreline, Invert, Property Line, Light Standard, Flag Pole, Survey Monument Planted, Survey Monument Found, Standard Iron Bar, Short Standard Iron Bar, Survey Monument 0.3 Long, Witness, Annis, O'Sullivan, Vollebakk Ltd., Overhead Wires

Bearings are grid.

SITE AREA = 19917 m²

BOUNDARY INFORMATION COMPILED FROM PLANS 4R-23509, 5R-9075, 5R-5421 AND (AOG) SURVEY DATED FEBRUARY 6, 1990.

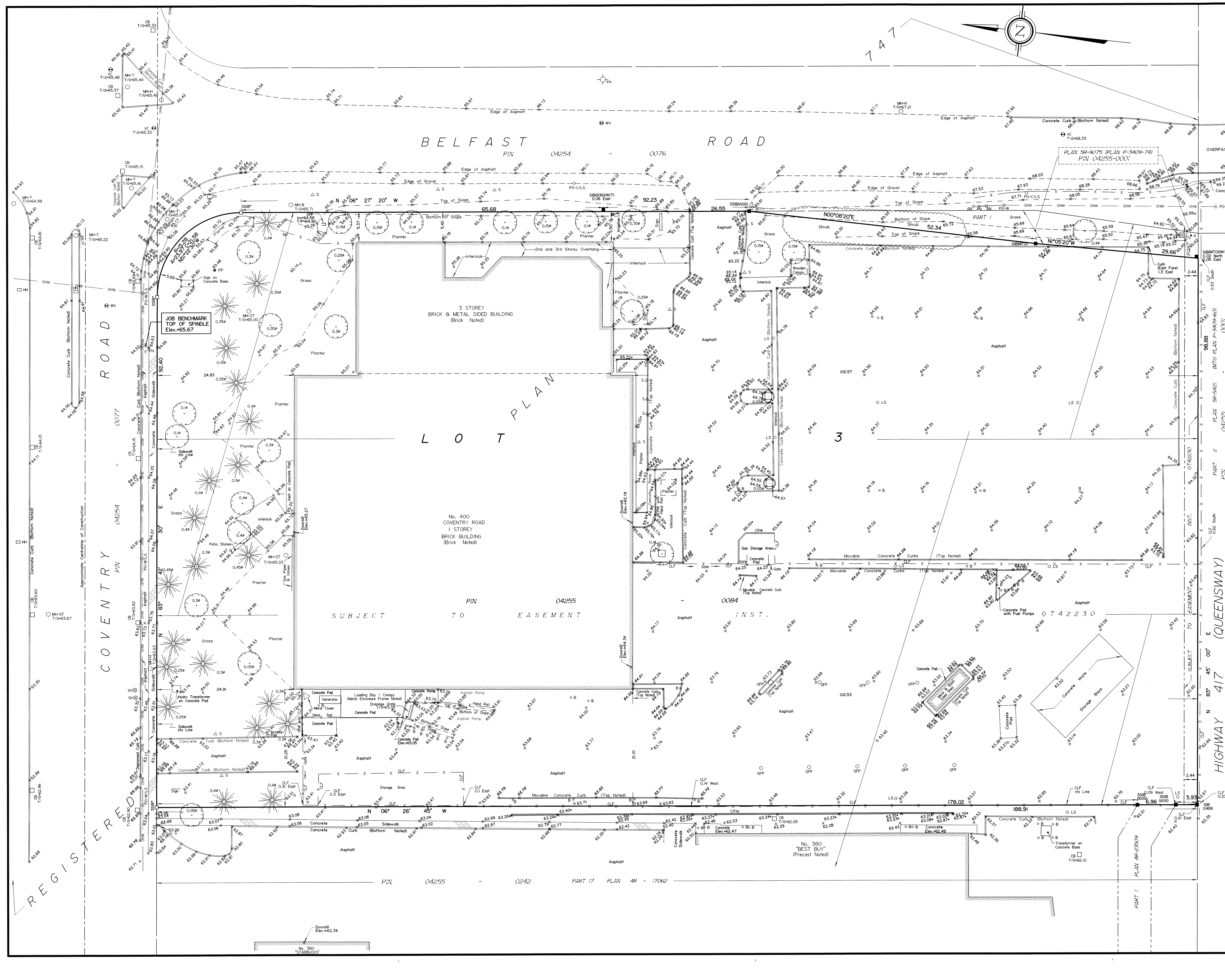
ELEVATION NOTES

- 1. Elevations shown are referred to geoid datum. 2. It is the responsibility of the user of this information to verify that the job benchmark has not been altered or disturbed and that it's relative elevation and description agrees with the information shown on this drawing.

UTILITY NOTES

- 1. This drawing cannot be accepted as acknowledging all of the utilities and it will be the responsibility of the user to contact the respective utility authorities for confirmation. 2. Only visible surface utilities were located. 3. A field location of underground plant by the pertinent utility authority is mandatory before any work involving breaking ground, probing, excavating etc.

© Annis, O'Sullivan, Vollebakk Ltd., 2013. THIS PLAN IS PROTECTED BY COPYRIGHT. ANNIS, O'SULLIVAN, VOLLEBAKK LTD. 14 Concourse Gate, Suite 500 Nepean, Ont. K2E 7S8 Phone: (613) 727-0800 Fax: (613) 727-1079 Email: Nepean@avokl.com



REGISTERED

COVENTRY ROAD PIN 04254

QUEENSWAY 417 JUNCTION GORE (GLOUCESTER) PIN 04255

LOT 3

LOT 10