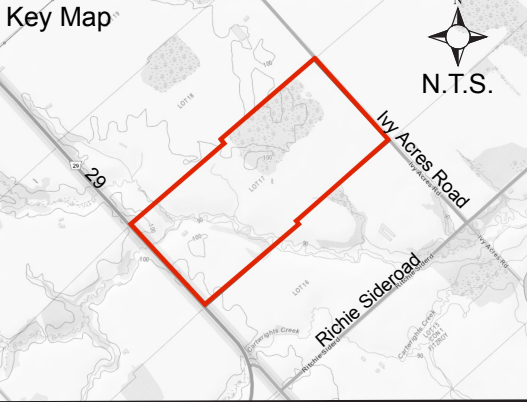


# W. Gillan Farms Ltd. Zoning Amendment Sketch

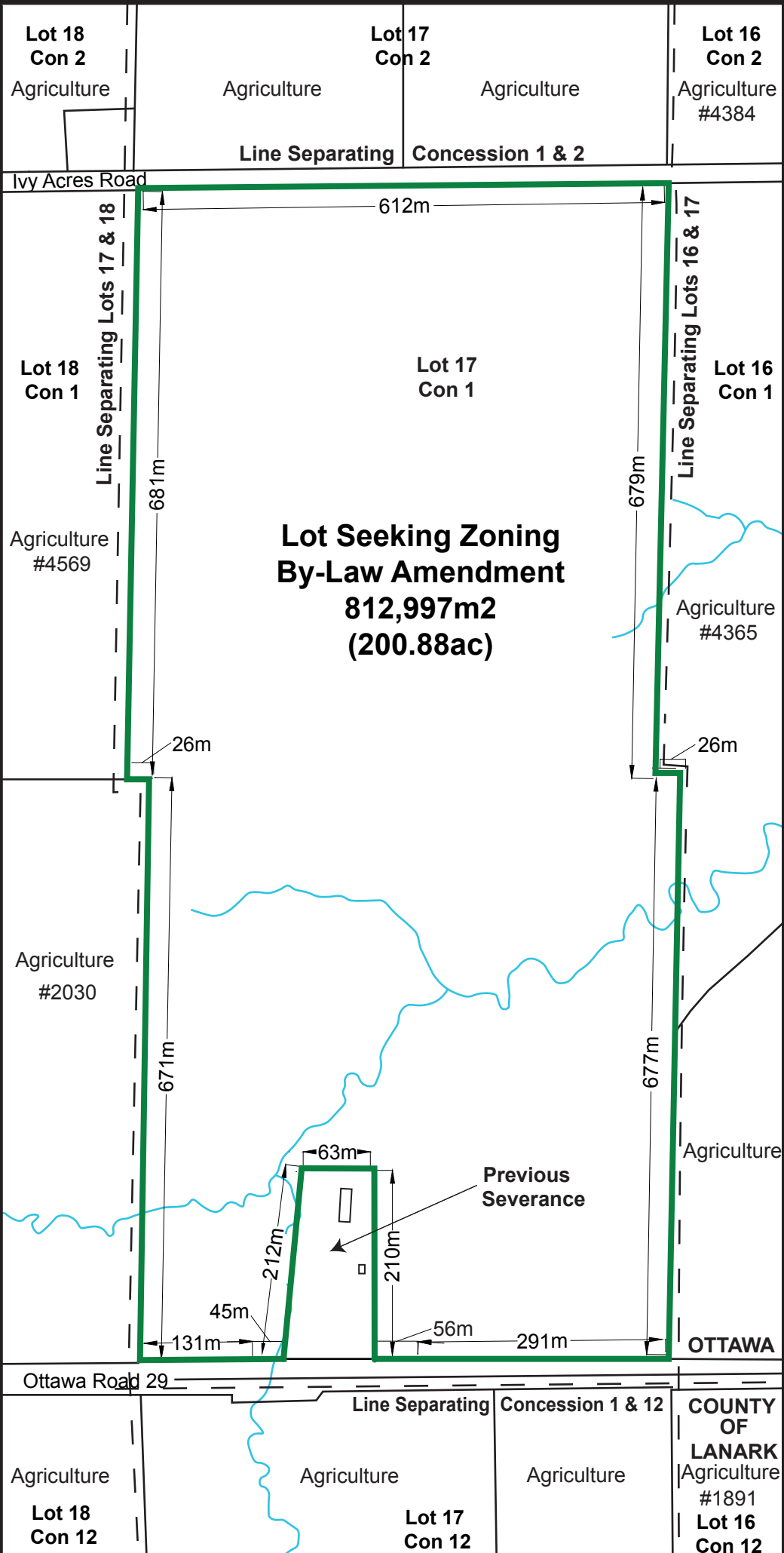
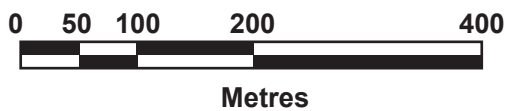
2180 Ottawa Road 29  
Lot 17, Concession 1  
Geographic Township of Fitzroy  
City of Ottawa



## Legend

- Watercourse
- Subject Property

- Notes:
1. Boundary and dimensions of the subject property are approximate and not based on a Plan of Survey.
  2. Location of Watercourses derived from Mississippi Valley Conservation Authority Online GIS Mapping.



Version Date: October 05, 2022 | File No. 21-244

**ZANDERPLAN**  
Your rural land planning experts  
40 Sunset Blvd. Unit 40 (613) 264-9600

COUNTY OF LANARK  
Agriculture #1891  
Lot 16 Con 12