

PROJECT INFORMATION		PROJECT STATISTICS		BUILDING STATISTICS		PARKING		AMENITY	
ZONING		BUILDING		BUILDING		CAR PARKING		REQUIRED (m2)	
MDS (2172) S332		BUILDING HEIGHT (ABOVE ROOF CONSTRUCTION EXCLUDED) (a.s.l.)	126700 m	GROUND FLOOR	1211.5 m ²	STUDIO	26	REQUIRED RESIDENT PARKING	0
		BUILDING HEIGHT (ABOVE ROOF CONSTRUCTION EXCLUDED) (a.s.g.)	72.75 m	MEZZANINE	85.4 m ²	1 BED + DEN	110	PROVIDED RESIDENT PARKING	97
		REAR YARD SETBACK FOR TOWER	10 m	LEVEL 2	949.3 m ²	2 BED	17	VISITOR (0.1 SPACES/DWELLING UNIT)	24
		INTERIOR SIDE TOWER (EAST)	13 m	LEVEL 3	946.3 m ²	2 BED + DEN	57	May be located on any lot within the MDS Zone	
		INTERIOR SIDE TOWER (WEST)	32 m	LEVEL 4	946.3 m ²	2 BED + DEN	57	BARRIER FREE (2 TYPE A / 2 TYPE B)	
				LEVEL 5	946.3 m ²			-Section 3.1.2, Table 3 Ottawa ADS	
				LEVEL 6	837.4 m ²			ON-SITE VISITOR PARKING	0
				LEVEL 7	837.4 m ²			OFF-SITE VISITOR PARKING*	24
				LEVEL 8	837.4 m ²			*PROVIDED IN ADJACENT BLOCK SOL. BENEATH HEAD ST. SO. WITH DIRECT ACCESS TO GARAGE BENEATH BLOCK 204	
				LEVEL 9	584.9 m ²			TOTAL VISITOR PARKING PROVIDED	28
				LEVEL 10	567.8 m ²			TOTAL PARKING SPACES PROVIDED	97
				LEVEL 11	585.9 m ²			BICYCLE PARKING REQUIRED	
				LEVEL 12	585.9 m ²			RESIDENCE (0.5 SPACES/DWELLING UNIT)	121
				LEVEL 13	585.9 m ²			RETAIL (1 per 250m ² GFA)	6
				LEVEL 14	585.9 m ²			TOTAL	127
				LEVEL 16	585.9 m ²			TOTAL BICYCLE PARKING SPACES PROVIDED	282
				LEVEL 17	585.9 m ²			(INC. 6 EXTERIOR SPACES)	
				LEVEL 18	585.9 m ²				
				LEVEL 19	585.9 m ²				
				LEVEL 20	585.9 m ²				
				LEVEL 21	585.9 m ²				
				LEVEL 22	585.9 m ²				
				PROJECT TOTAL	15,194.9 m ²				

TOPOGRAPHIC INFORMATION

- CHAUDIÈRE AND ALBERT ISLAND TOPOGRAPHIC INFORMATION PROVIDED BY FAIRHALL, MOFFATT & WOODLAND LIMITED, DATED JANUARY 15, 2015. JOB NO. T41200

LEGAL INFORMATION

- LEGAL SURVEY PROVIDED BY STANTEC GEOMATICS LIMITED, DATED 2022. PROJECT NO. 161613467-1014
 - SITE BOUNDARY INFORMATION PROVIDED BY PLAN # 4R-32359



GENERAL NOTES

- These architectural documents are the exclusive property of HDR Architecture Associates and NEUF architect(e)s and cannot be used, copied or reproduced without written pre-authorization.
- All dimensions which appear on the documents must be verified by the contractor before to start the work.
- The architect must be notified of all errors, omissions and discrepancies between these documents and those of the others professionals.
- The dimensions on these documents must be read and not measured.

Structural Engineer
RJC Engineers
 1540 Carling Avenue, Suite 304
 Ottawa, ON, K1Z 8P9

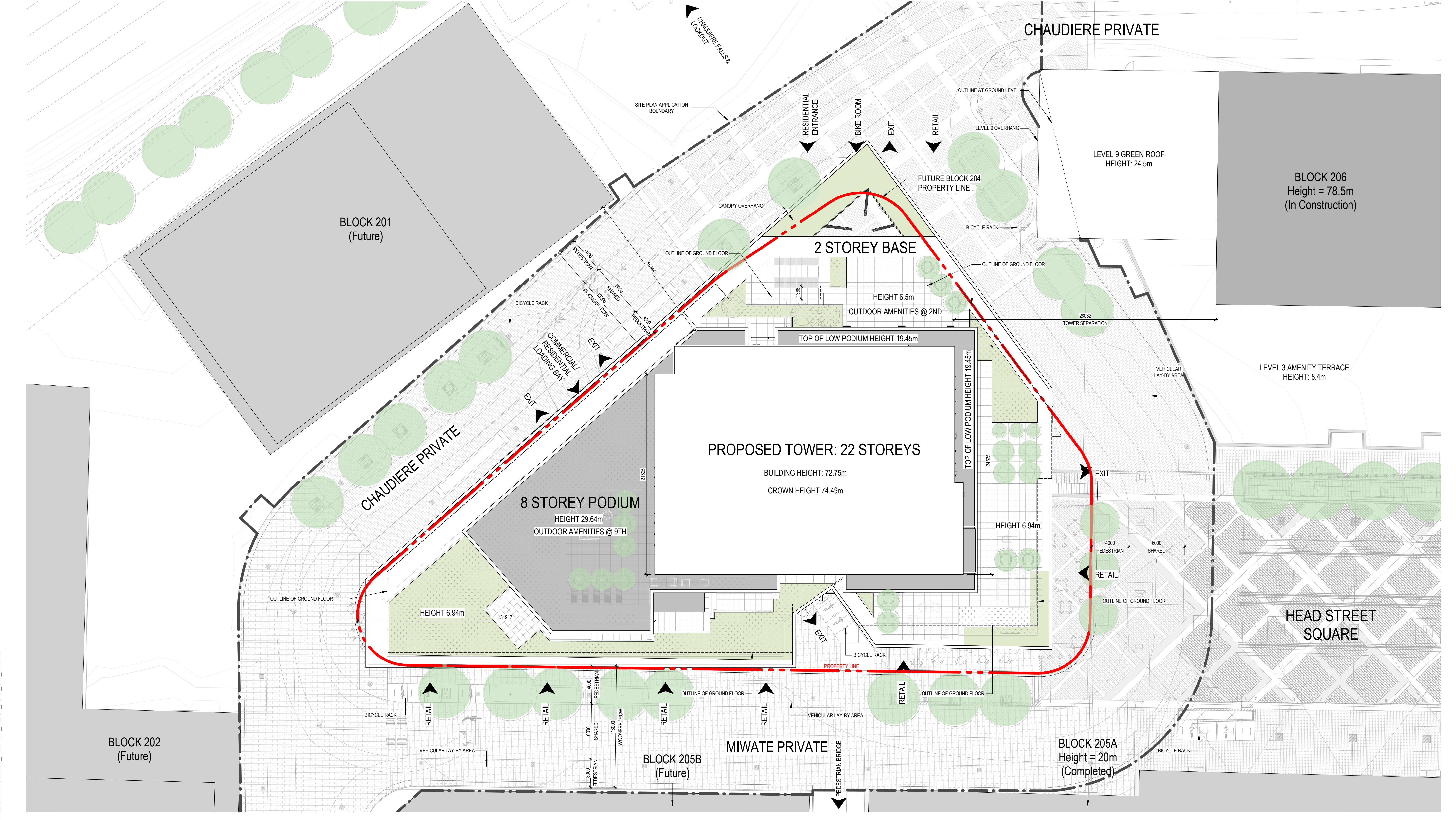
Electrical & Mechanical Engineer
Smith + Andersen
 1600 Carling Avenue, Suite 530
 Ottawa, ON, K1Z 1G3

Planning
Folenn Planning + Design
 318 Cooper Street, Suite 300
 Ottawa, ON, K2P 2H7

Landscape Architect
CSW
 319 McRae Avenue, Suite 502
 Ottawa, ON, K1Z 0S9

Civil
CIMA
 240 Catherine Street, Unit 110
 Ottawa, ON, K2P 2G8

Architect
NEUF architect(e)s CANADA INC.
 47 Clarence St. Suite 406, Ottawa, ON K1N 9K1



Client
DREAM UNLIMITED
 30 Adelaide Street East
 Suite 301
 Toronto, ON, M5C 3H1
 T: (416) 365-3535

ZIBI
 6 Booth Street (Albert Island)
 Ottawa, ON, M1R 6K8

Project
ZIBI - BLOCK 204

Location
**315 Miwate Private
 Ottawa, ON**

PROJECT No.
12791

NO	REVISION	DATE (yy-mm-dd)
0	ISSUED FOR SITE PLAN CONTROL APPLICATION	2022-04-21
1	ISSUED FOR SITE PLAN CONTROL APPLICATION RE-SUBMISSION	2022-09-15

**Preliminary
 DO NOT USE FOR
 CONSTRUCTION**

Drawn by
AC / EW

Checked by
CI / LK

DATE (yy-mm-dd)
09/01/22

Scale
1 : 200

Drawing Title
SITE PLAN

Revision
1

Drawing Number
SPA-A100