

PROJECT TEAM

ARCHITECT
 HOBIN ARCHITECTURE
 PATRICK BISSON
 T 613-238-7200

PLANNING
 FOTENY CONSULTANTS INC.
 ANGELO TREMBLAY
 T 613-730-5709

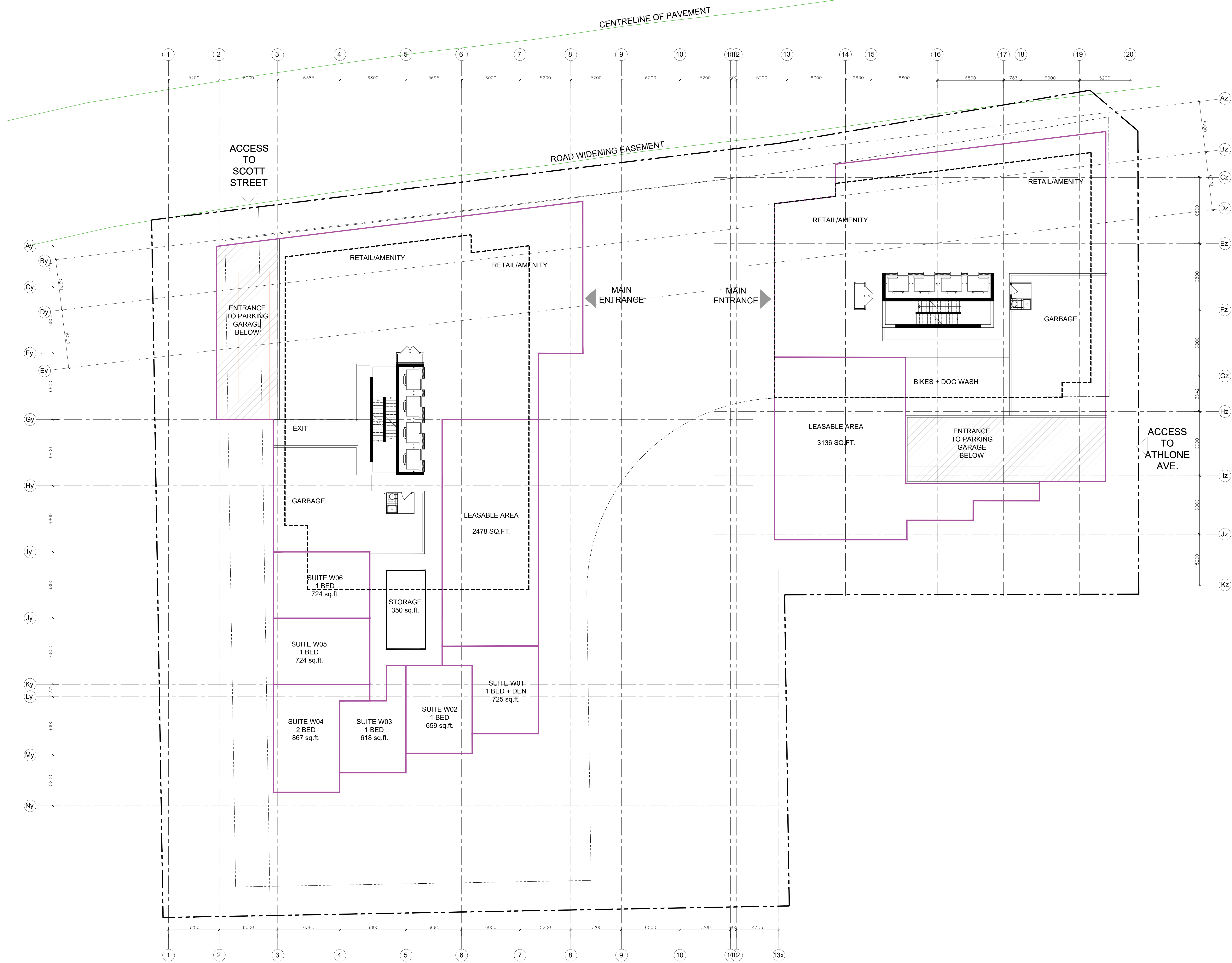
CIVIL
 NOVATECH
 LEE SHEETS
 T 613-254-9643 X209

LANDSCAPE ARCHITECT
 PROJECT PACKAGE
 SERGE GALLANZ
 T 514-891-5442

TRANSPORTATION
 NOVATECH
 JENNIFER LUONG
 T 613-254-9643 X254

ENVIRONMENTAL
 GRADIENT WIND ENGINEERING
 JOSHUA FOSTER
 T 613-834-0634

SURVEYOR
 STANTEC
 BRIAN WEBSTER
 T 613-229-7444



no.	date	revision
2	23-04-07	ISSUED FOR REZONING
1	21-06-08	CITY OF OTTAWA PRECONSULTATION

It is the responsibility of the appropriate contractor to check and verify all dimensions on site and report all errors and/or omissions to the architect.

All contractors must comply with all pertinent codes and by-laws. Do not scale drawings.

This drawing may not be used for construction until signed.

Copyright reserved.

Hobin Architecture Incorporated
 63 Pamela Street
 Ottawa, Ontario
 Canada K1S 3K7
 T: 613 238 7200
 F: 613 235 2005
 E: mail@hobinarc.com
 hobinarc.com

PROJECT LOCATION:
 MORLEY HOPPNER LTD.
 314 & 318 ATHLONE AVE., 2006, 2020, 2026 SCOTT ST.
 OTTAWA ON.

DRAWING TITLE:
 GROUND LEVEL PLAN

DRAWN BY: PB **DATE:** 22-04-05 **SCALE:** 1/150

PROJECT: 2126 **DRAWING NO.:**

A1.01
 REVISION NO.:

PROJECT TEAM

ARCHITECT
 HOBIN ARCHITECTURE
 PATRICK BISSON
 T 613-238-7200

PLANNING
 FOTENY CONSULTANTS INC.
 ANGELO TREMBLAY
 T 613-730-5709

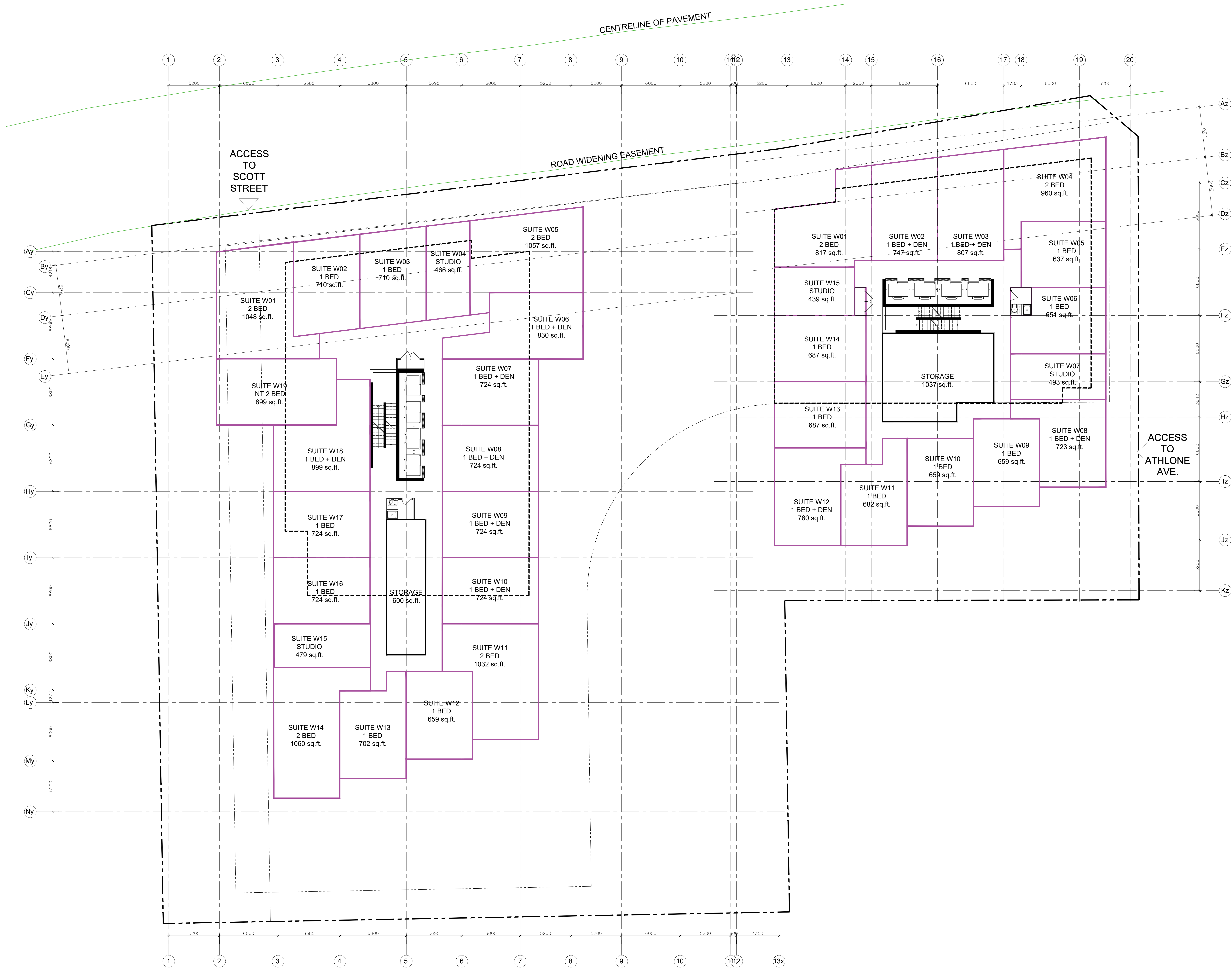
CIVIL
 NOVATECH
 LEE SHEETS
 T 613-254-9643 X209

LANDSCAPE ARCHITECT
 PROJECT PASSAGE
 SERGE GALLANER
 T 514-899-5442

TRANSPORTATION
 NOVATECH
 JENNIFER LUCONG
 T 613-254-9643 X254

ENVIRONMENTAL
 GRADIENT WIND ENGINEERING
 JOSHUA FOSTER
 T 613-834-0634

SURVEYOR
 STANTEC
 BRIAN WEBSTER
 T 613-229-7644



no.	date	revision
2	22-04-07	ISSUED FOR REZONING
1	21-06-08	CITY OF OTTAWA PRECONSULTATION

It is the responsibility of the appropriate contractor to check and verify all dimensions on site and report all errors and/or omissions to the architect.

All contractors must comply with all pertinent codes and by-laws.

Do not scale drawings.

This drawing may not be used for construction until signed.

Copyright reserved.

Hobin Architecture Incorporated
 63 Pamela Street
 Ottawa, Ontario
 Canada K1S 3K7
 T: 613 238 7200
 F: 613 235 2005
 E: mail@hobinarc.com
 hobinarc.com

PROJECT LOCATION:
 MORLEY HOPPNER LTD.
 314 & 318 ATHLONE AVE., 2006, 2020, 2026 SCOTT ST.
 OTTAWA ON.

DRAWING TITLE:
 LEVELS 2-4

DRAWN BY: PB **DATE:** 22-04-05 **SCALE:** 1/150

PROJECT: 2126

DRAWING NO.: A1.01

REVISION NO.:

PROJECT TEAM

ARCHITECT
 HOBIN ARCHITECTURE
 PATRICK BISSON
 T 613-238-7200

PLANNING
 FOTENY CONSULTANTS INC.
 ANGELO TREMBLAY
 T 613-730-5709

CIVIL
 NOVATECH
 LEE SHEETS
 T 613-254-9643 X209

LANDSCAPE ARCHITECT
 PROJECT PACKAGE
 SERGE GALLANZ
 T 514-899-5442

TRANSPORTATION
 NOVATECH
 JENNIFER LUONG
 T 613-254-9643 X254

ENVIRONMENTAL
 GRADIENT WIND ENGINEERING
 JOSHUA FOSTER
 T 613-834-0634

SURVEYOR
 STANTEC
 BRIAN WEBSTER
 T 613-229-7444

no.	date	revision
2	22-04-07	ISSUED FOR REZONING
1	21-06-08	CITY OF OTTAWA PRECONSULTATION

It is the responsibility of the appropriate contractor to check and verify all dimensions on site and report all errors and/or omissions to the architect.

All contractors must comply with all pertinent codes and by-laws. Do not scale drawings.

This drawing may not be used for construction until signed.

Copyright reserved.

Hobin Architecture Incorporated
 63 Pamela Street
 Ottawa, Ontario
 Canada K1S 3K7
 T: 613 238 7200
 F: 613 235 2005
 E: mail@hobin.com
 hobin.com



PROJECT LOCATION:
 MORLEY HOPPNER LTD.
 314 & 318 ATHLONE AVE., 2006.2020, 2026 SCOTT ST.
 OTTAWA ON.

DRAWING TITLE:
 LEVEL 5

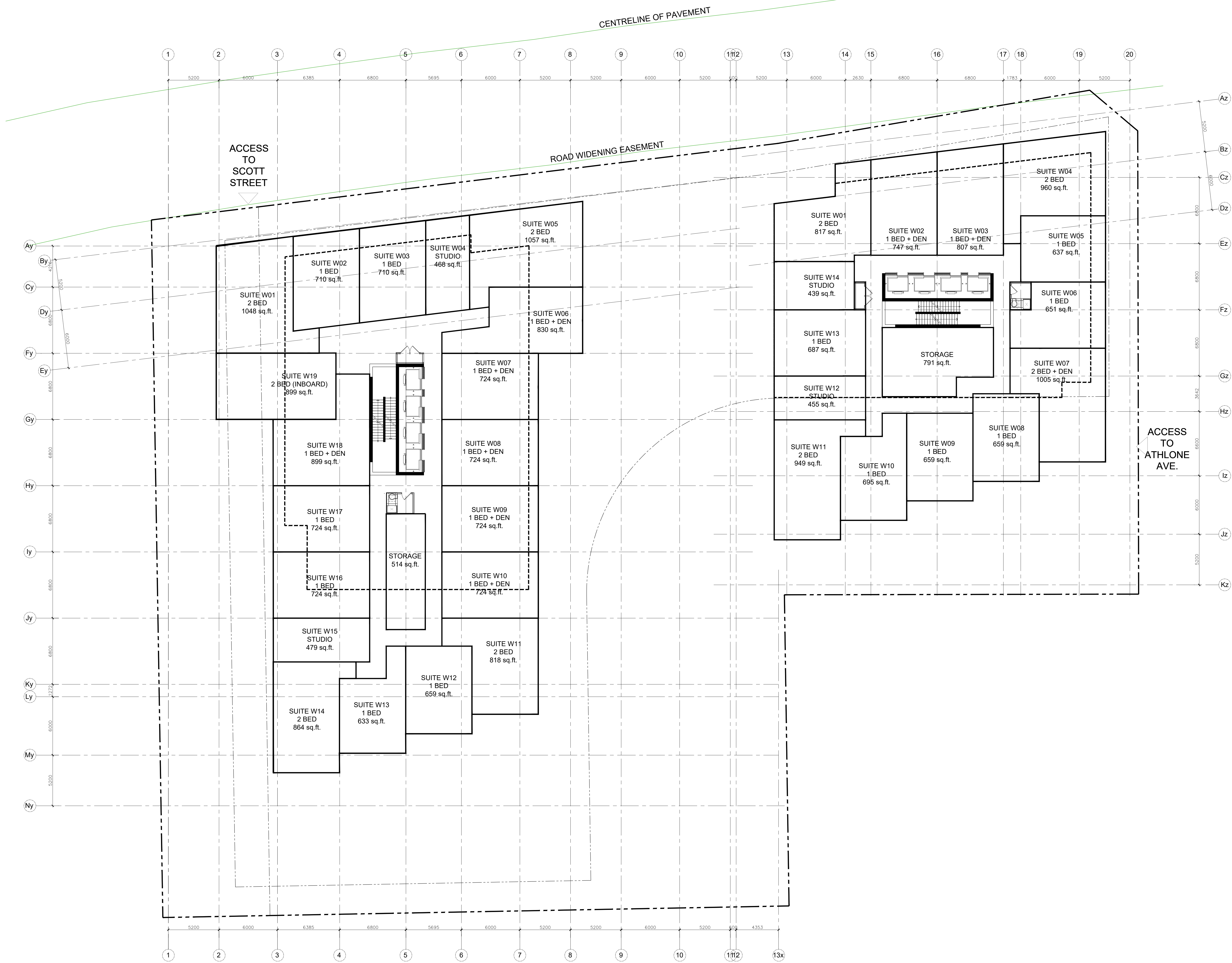
DRAWN BY: PB **DATE:** 22-04-05 **SCALE:** 1/150

PROJECT: 2126

DRAWING NO.:

A1.01

REVISION NO.:



PROJECT TEAM

ARCHITECT
 HOBIN ARCHITECTURE
 PATRICK BISSON
 T 613-238-7200

PLANNING
 FOTENY CONSULTANTS INC.
 ANGELO TREMBLAY
 T 613-730-5709

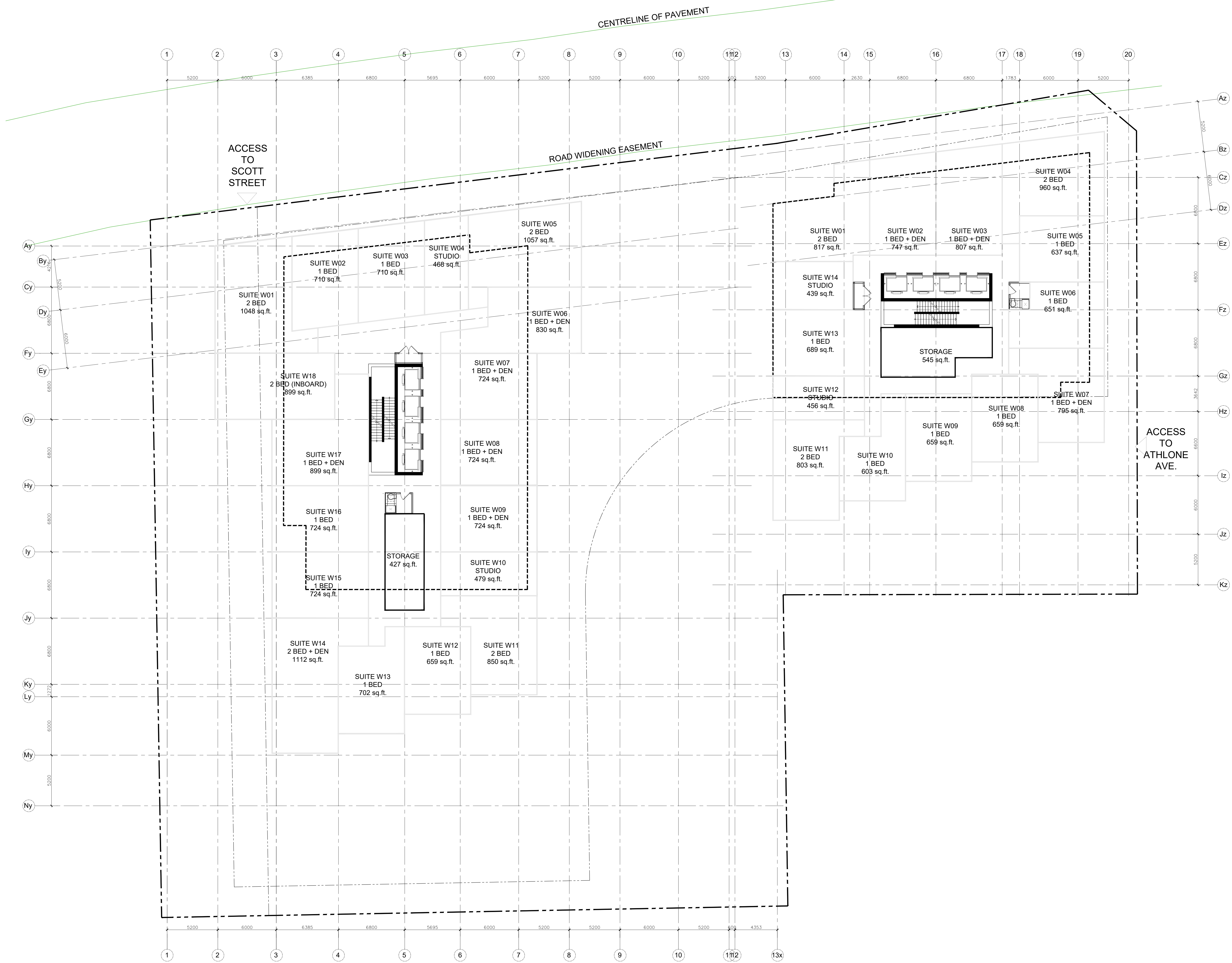
CIVIL
 NOVATECH
 LEE SHEETS
 T 613-254-9643 X209

LANDSCAPE ARCHITECT
 PROJECT PASSAGE
 SERGE GALLANER
 T 514-891-5442

TRANSPORTATION
 NOVATECH
 JENNIFER LUCONG
 T 613-254-9643 X254

ENVIRONMENTAL
 GRADIENT WIND ENGINEERING
 JOSHUA FOSTER
 T 613-834-0634

SURVEYOR
 STANTEC
 BRIAN WEBSTER
 T 613-229-7644



no.	date	revision
2	22-04-07	ISSUED FOR REZONING
1	21-06-08	CITY OF OTTAWA PRECONSULTATION

It is the responsibility of the appropriate contractor to check and verify all dimensions on site and report all errors and/or omissions to the architect.

All contractors must comply with all pertinent codes and by-laws.

Do not scale drawings.

This drawing may not be used for construction until signed.

Copyright reserved.

Hobin Architecture Incorporated
 63 Pamela Street
 Ottawa, Ontario
 Canada K1S 3K7
 T: 613 238 7200
 F: 613 235 2005
 E: mail@hobinarc.com
 hobinarc.com

PROJECT LOCATION:
 MORLEY HOPPNER LTD.
 314 & 318 ATHLONE AVE., 2006, 2020, 2026 SCOTT ST.
 OTTAWA ON.

DRAWING TITLE:
 LEVEL 6

DRAWN BY: PB **DATE:** 22-04-05 **SCALE:** 1/150

PROJECT: 2126

DRAWING NO.: A1.01

REVISION NO.:

PROJECT TEAM

ARCHITECT
 HOBIN ARCHITECTURE
 PATRICK BISSON
 T 613-238-7200

PLANNING
 FOTENY CONSULTANTS INC.
 ANGELO TREMBLAY
 T 613-730-5709

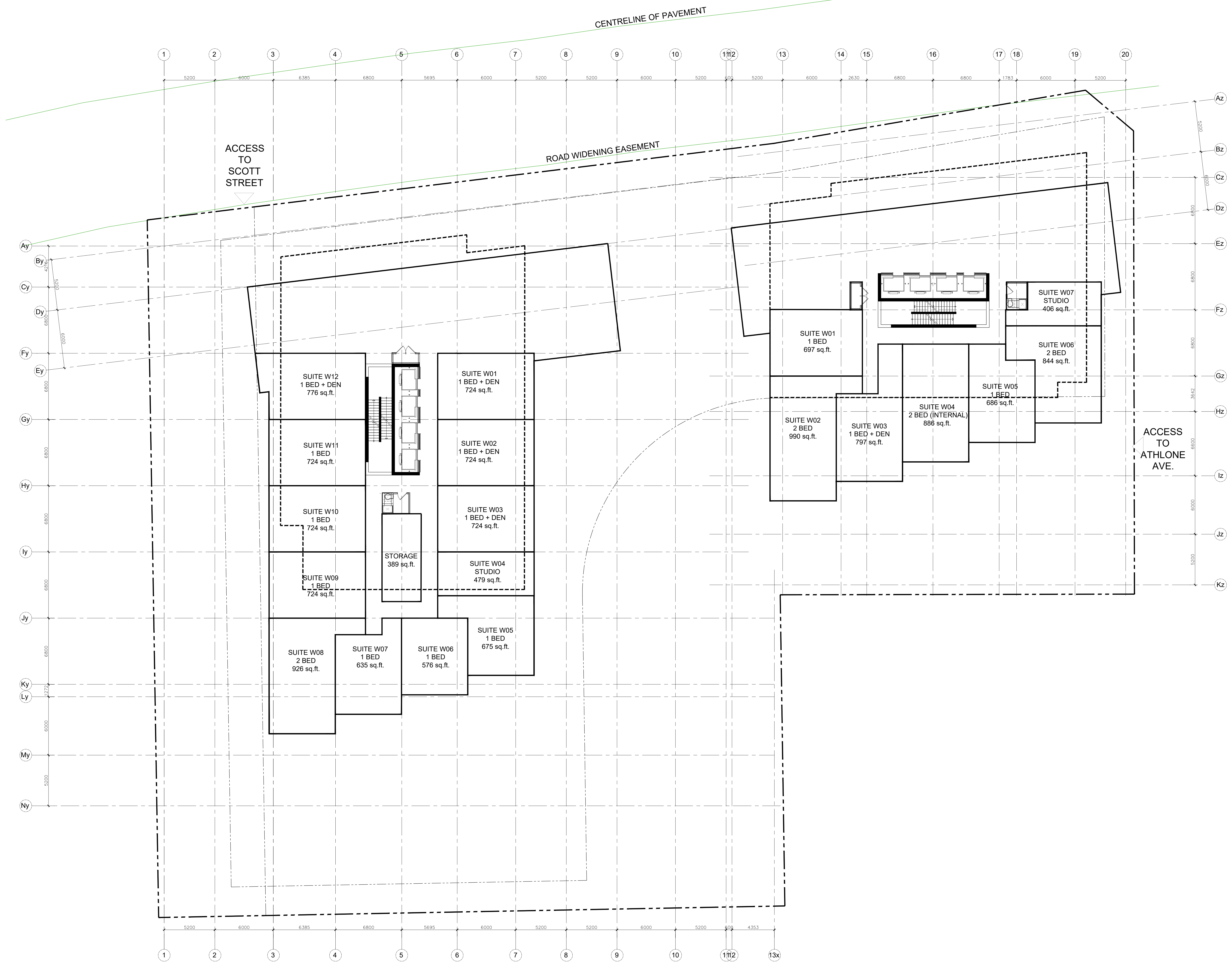
CIVIL
 NOVATECH
 LEE SHEETS
 T 613-254-9643 X209

LANDSCAPE ARCHITECT
 PROJECT PASSAGE
 SERGE GALLANÉ
 T 514-891-5442

TRANSPORTATION
 NOVATECH
 JENNIFER LUCONG
 T 613-254-9643 X254

ENVIRONMENTAL
 GRADIENT WIND ENGINEERING
 JOSHUA FOSTER
 T 613-836-0634

SURVEYOR
 STANTEC
 BRIAN WEBSTER
 T 613-229-7644



no.	date	revision
2	22-04-07	ISSUED FOR REZONING
1	21-06-08	CITY OF OTTAWA PRECONSULTATION

It is the responsibility of the appropriate contractor to check and verify all dimensions on site and report all errors and/or omissions to the architect.

All contractors must comply with all pertinent codes and by-laws.

Do not scale drawings.

This drawing may not be used for construction until signed.

Copyright reserved.

Hobin Architecture Incorporated
 63 Pamela Street
 Ottawa, Ontario
 Canada K1S 3K7
 T: 613 238 7200
 F: 613 235 2005
 E: info@hobinarc.com
 hobinarc.com

PROJECT LOCATION:
 MORLEY HOPPNER LTD.
 314 & 318 ATHLONE AVE., 2006.2020, 2026 SCOTT ST.
 OTTAWA ON.

DRAWING TITLE:
 LEVEL 7

DRAWN BY: PB **DATE:** 22-04-05 **SCALE:** 1/150

PROJECT: 2126

DRAWING NO.: A1.01

REVISION NO.:

PROJECT TEAM

ARCHITECT
 HOBIN ARCHITECTURE
 PATRICK BISSON
 T 613-238-7200

PLANNING
 FOTENI CONSULTANTS INC.
 ANGELO TREMBLAY
 T 613-730-5709

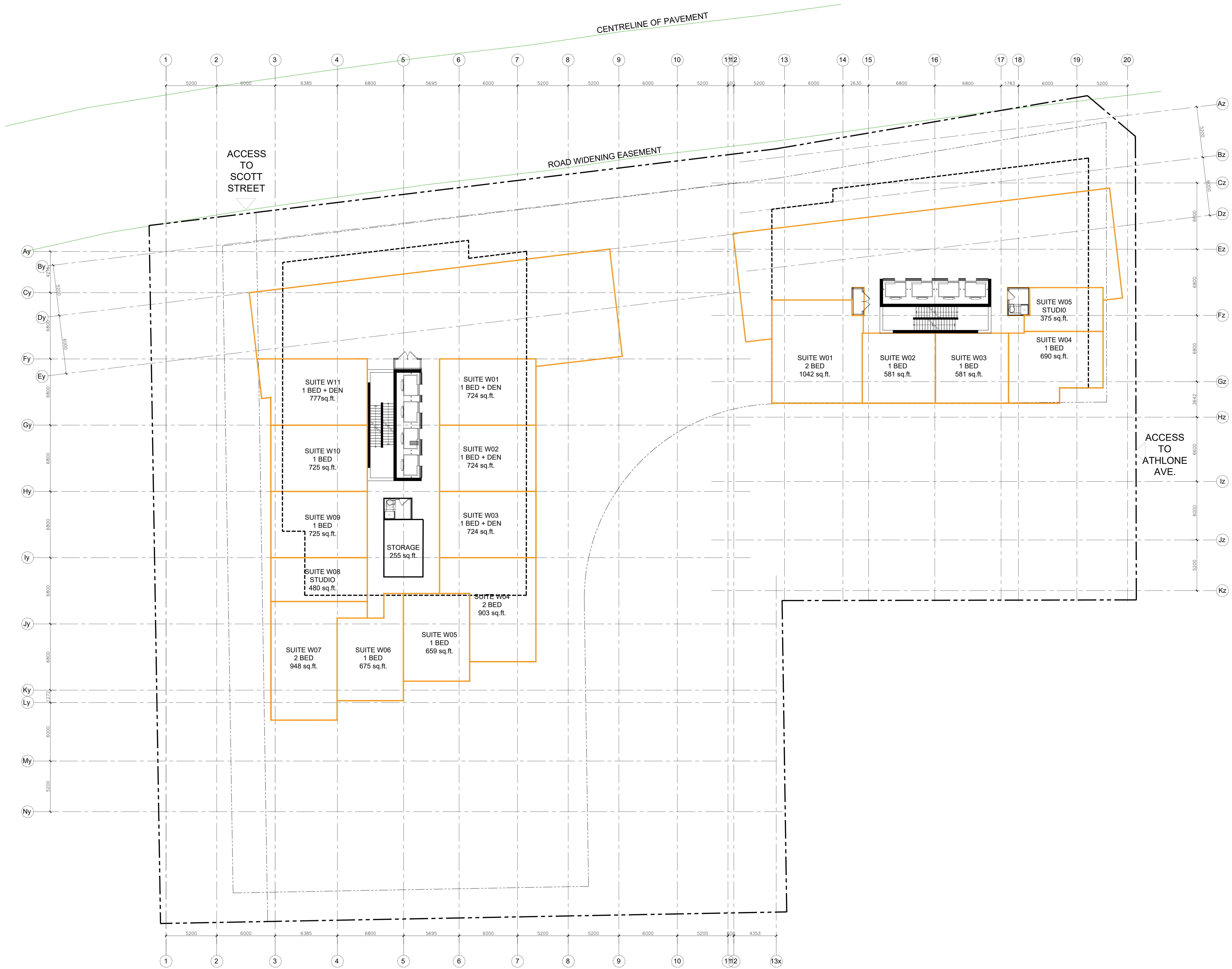
CIVIL
 NOVATECH
 T 613-254-9643 X209

LANDSCAPE ARCHITECT
 PROJECT PASSAGE
 SERGE GALLANÉ
 T 514-891-5442

TRANSPORTATION
 NOVATECH
 JENNIFER LUCING
 T 613-254-9643 X254

ENVIRONMENTAL
 GRADIENT WIND ENGINEERING
 JOSHUA FOSTER
 T 613-836-0634

SURVEYOR
 STANTEC
 BRIAN WEBSTER
 T 613-229-7644



no.	date	revision
2	22-04-07	ISSUED FOR REZONING
1	21-06-08	CITY OF OTTAWA PRECONSULTATION

It is the responsibility of the appropriate contractor to check and verify all dimensions on site and report all errors and/or omissions to the architect.

All contractors must comply with all pertinent codes and by-laws. Do not scale drawings.

This drawing may not be used for construction until signed.

Copyright reserved.

Hobin Architecture Incorporated
 63 Pamela Street
 Ottawa, Ontario
 Canada K1S 3K7
 T: 613 238 7200
 F: 613 235 2005
 E: mail@hobinarc.com
 hobinarc.com

PROJECT LOCATION:
 MORLEY HOPPNER LTD.
 314 & 318 ATHLONE AVE., 2006, 2020, 2026 SCOTT ST.
 OTTAWA ON.

DRAWING TITLE:
 LEVEL 8

DRAWN BY: PB **DATE:** 22-04-05 **SCALE:** 1/150

PROJECT: 2126

DRAWING NO.: A1.01

REVISION NO.:

PROJECT TEAM

ARCHITECT
 HOBIN ARCHITECTURE
 PATRICK BISSON
 T 613-238-7200

PLANNING
 FOTENY CONSULTANTS INC.
 ANGELO TREMBLAY
 T 613-730-5709

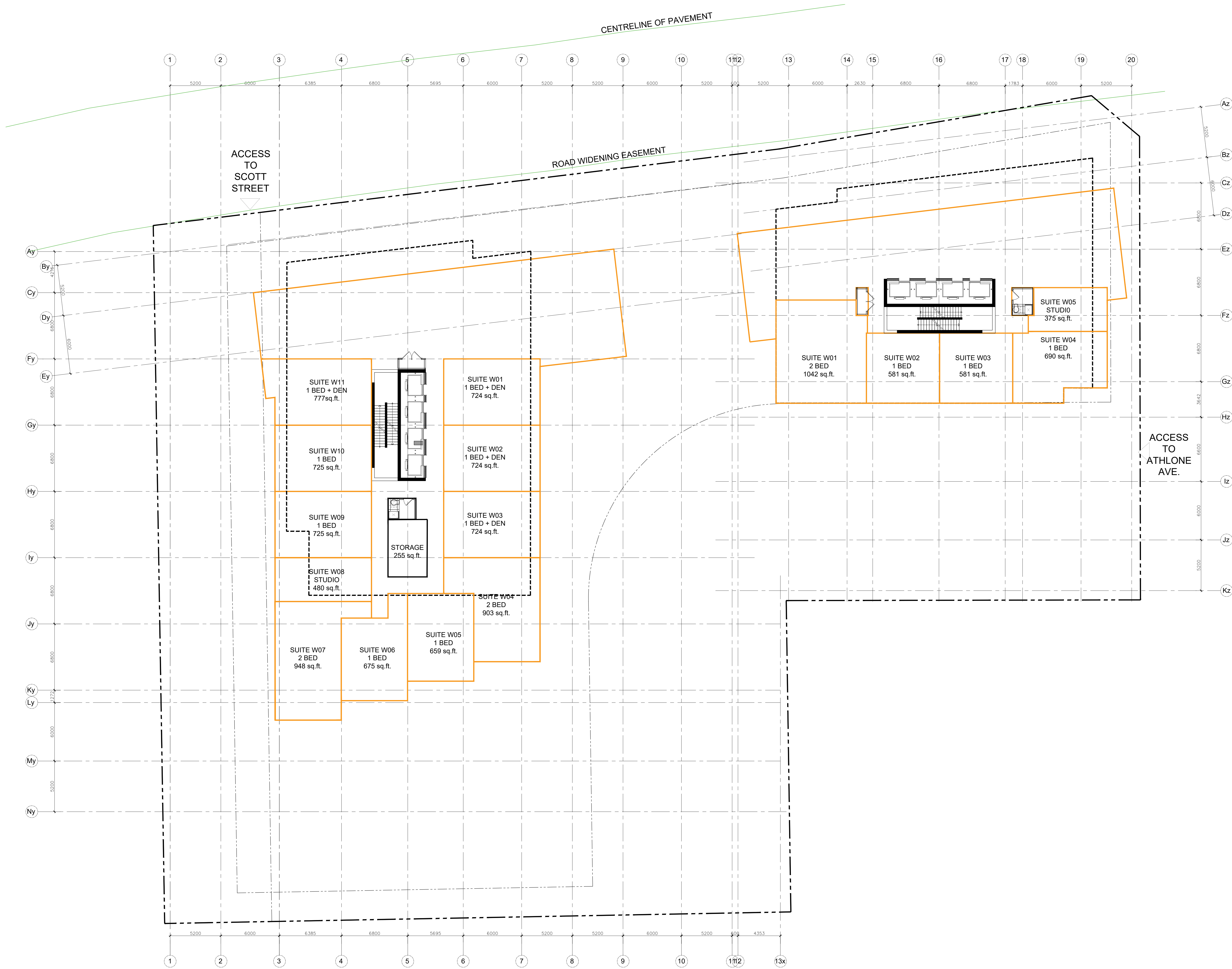
CIVIL
 NOVATECH
 LEE SHEETS
 T 613-254-9643 X209

LANDSCAPE ARCHITECT
 PROJECT PASSAGE
 SERGE GALLANER
 T 514-891-5442

TRANSPORTATION
 NOVATECH
 JENNIFER LUCING
 T 613-254-9643 X254

ENVIRONMENTAL
 GRADIENT WIND ENGINEERING
 JOSHUA FOSTER
 T 613-834-0634

SURVEYOR
 STANTEC
 BRIAN WEBSTER
 T 613-229-7444



no.	date	revision
2	22-04-07	ISSUED FOR REZONING
1	21-06-08	CITY OF OTTAWA PRECONSULTATION

It is the responsibility of the appropriate contractor to check and verify all dimensions on site and report all errors and/or omissions to the architect.

All contractors must comply with all pertinent codes and by-laws.

Do not scale drawings.

This drawing may not be used for construction until signed.

Copyright reserved.

Hobin Architecture Incorporated
 63 Pamela Street
 Ottawa, Ontario
 Canada K1S 3K7
 T: 613 238 7200
 F: 613 235 2005
 E: mail@hobinarc.com
 hobinarc.com

PROJECT LOCATION:
 MORLEY HOPPNER LTD.
 314 & 318 ATHLONE AVE., 2006, 2020, 2026 SCOTT ST.
 OTTAWA ON.

DRAWING TITLE:
 LEVEL 9

DRAWN BY: PB **DATE:** 22-04-05 **SCALE:** 1/150

PROJECT: 2126

DRAWING NO.: A1.01

REVISION NO.:

PROJECT TEAM

ARCHITECT
 HOBIN ARCHITECTURE
 PATRICK BISSON
 T 613-238-7200

PLANNING
 FOTENI CONSULTANTS INC.
 ANGELO TREMBLAY
 T 613-730-5709

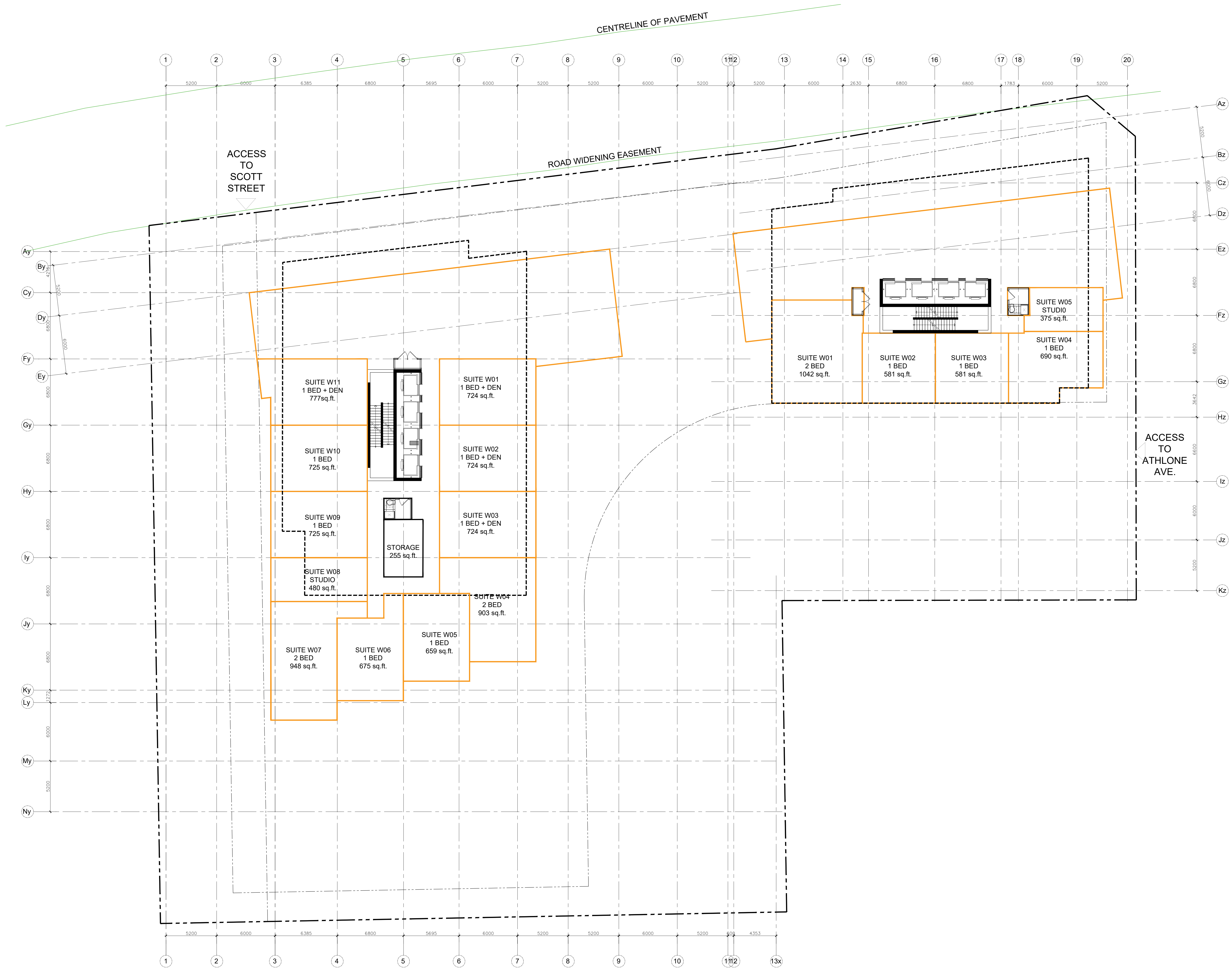
CIVIL
 NOVATECH
 LEE SHEETS
 T 613-254-9643 X209

LANDSCAPE ARCHITECT
 PROJECT PASSAGE
 SERGE GALLANÉ
 T 514-891-5442

TRANSPORTATION
 NOVATECH
 JENNIFER LUCING
 T 613-254-9643 X254

ENVIRONMENTAL
 GRADIENT WIND ENGINEERING
 JOSHUA FOSTER
 T 613-836-0634

SURVEYOR
 STANTEC
 BRIAN WEBSTER
 T 613-229-7644



no.	date	revision
2	22-04-07	ISSUED FOR REZONING
1	21-06-08	CITY OF OTTAWA PRECONSULTATION

It is the responsibility of the appropriate contractor to check and verify all dimensions on site and report all errors and/or omissions to the architect.

All contractors must comply with all pertinent codes and by-laws.

Do not scale drawings.

This drawing may not be used for construction until signed.

Copyright reserved.

Hobin Architecture Incorporated
 63 Pamela Street
 Ottawa, Ontario
 Canada K1S 3K7
 T: 613 238 7200
 F: 613 235 2005
 E: mail@hobinarc.com
 hobinarc.com

PROJECT LOCATION:
 MORLEY HOPPNER LTD.
 314 & 318 ATHLONE AVE., 2006, 2020, 2026 SCOTT ST.
 OTTAWA ON.

DRAWING TITLE:
 LEVEL 10

DRAWN BY: PB	DATE: 22-04-05	SCALE: 1:150
PROJECT: 2126		DRAWING NO.: A1.01
REVISION NO.:		

PROJECT TEAM

ARCHITECT
 HOBIN ARCHITECTURE
 PATRICK BISSON
 T 613-238-7200

PLANNING
 FOTENY CONSULTANTS INC.
 ANGELO TREMBLAY
 T 613-730-5709

CIVIL
 NOVATECH
 LEE SHEETS
 T 613-254-9643 X209

LANDSCAPE ARCHITECT
 PROJECT PACKAGE
 SERGE GALLANER
 T 514-891-5442

TRANSPORTATION
 NOVATECH
 JENNIFER LUCONG
 T 613-254-9643 X254

ENVIRONMENTAL
 GRADIENT WIND ENGINEERING
 JOSHUA FOSTER
 T 613-836-0634

SURVEYOR
 STANTEC
 BRIAN WEBSTER
 T 613-229-7644

no.	date	revision
2	22-04-07	ISSUED FOR REZONING
1	21-06-08	CITY OF OTTAWA PRECONSULTATION

It is the responsibility of the appropriate contractor to check and verify all dimensions on site and report all errors and/or omissions to the architect.

All contractors must comply with all pertinent codes and by-laws.
 Do not scale drawings.

This drawing may not be used for construction until signed.
 Copyright reserved.

Hobin Architecture Incorporated
 63 Pamela Street
 Ottawa, Ontario
 Canada K1S 3K7
 T: 613 238 7200
 F: 613 235 2005
 E: mail@hobinarc.com
 hobinarc.com

PROJECT LOCATION:
 MORLEY HOPPNER LTD.
 314 & 318 ATHLONE AVE., 2006, 2020, 2026 SCOTT ST.
 OTTAWA ON.

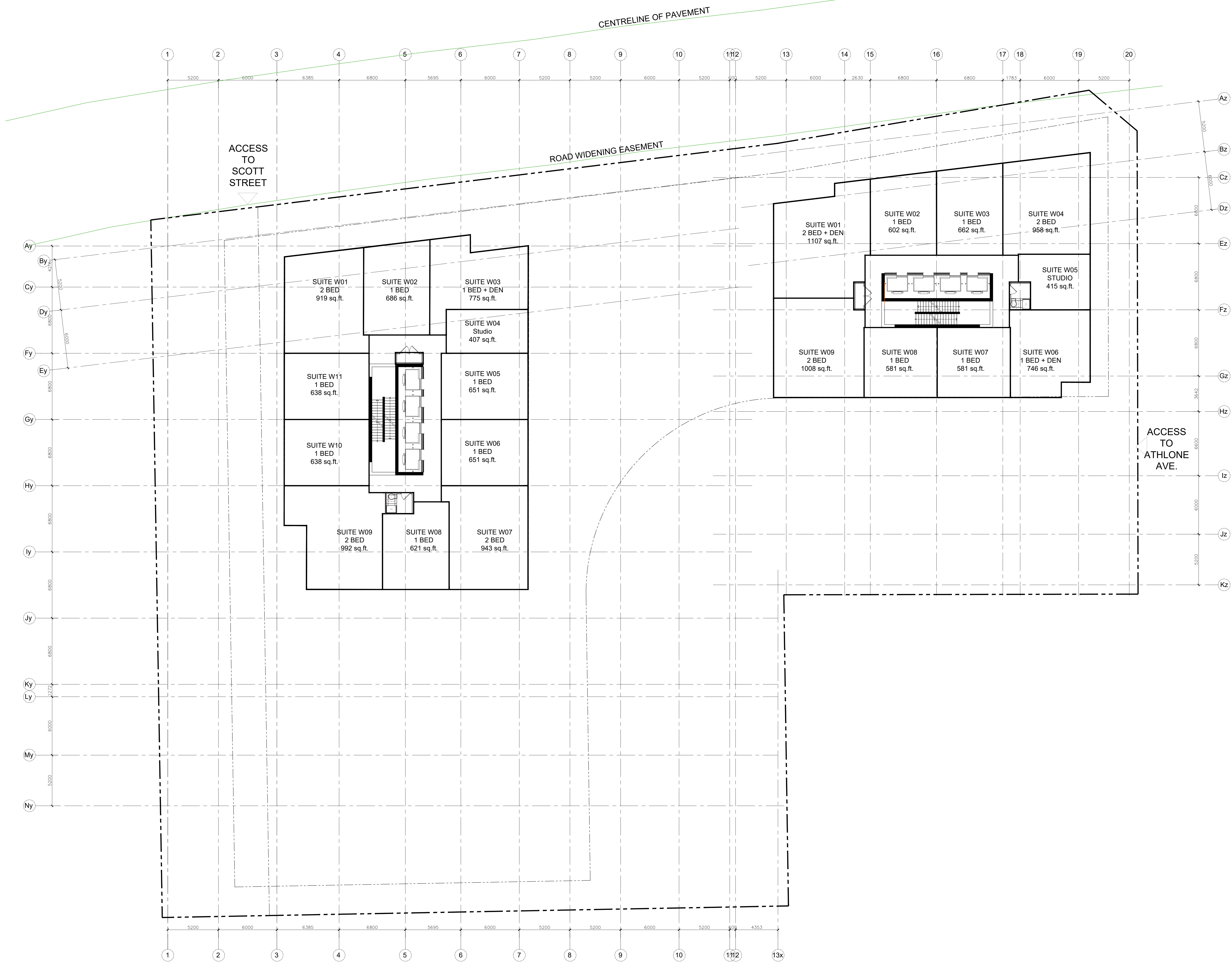
DRAWING TITLE:
 LEVELS 11-35

DRAWN BY: DATE: SCALE:
 PB 22-04-05 1/150

PROJECT:
 2126

DRAWING NO.:
 A1.01

REVISION NO.:



PROJECT TEAM

ARCHITECT
 HOBIN ARCHITECTURE
 PATRICK BISSON
 T 613-238-7200

PLANNING
 FOTENY CONSULTANTS INC.
 ANGELO TREMBLAY
 T 613-730-5709

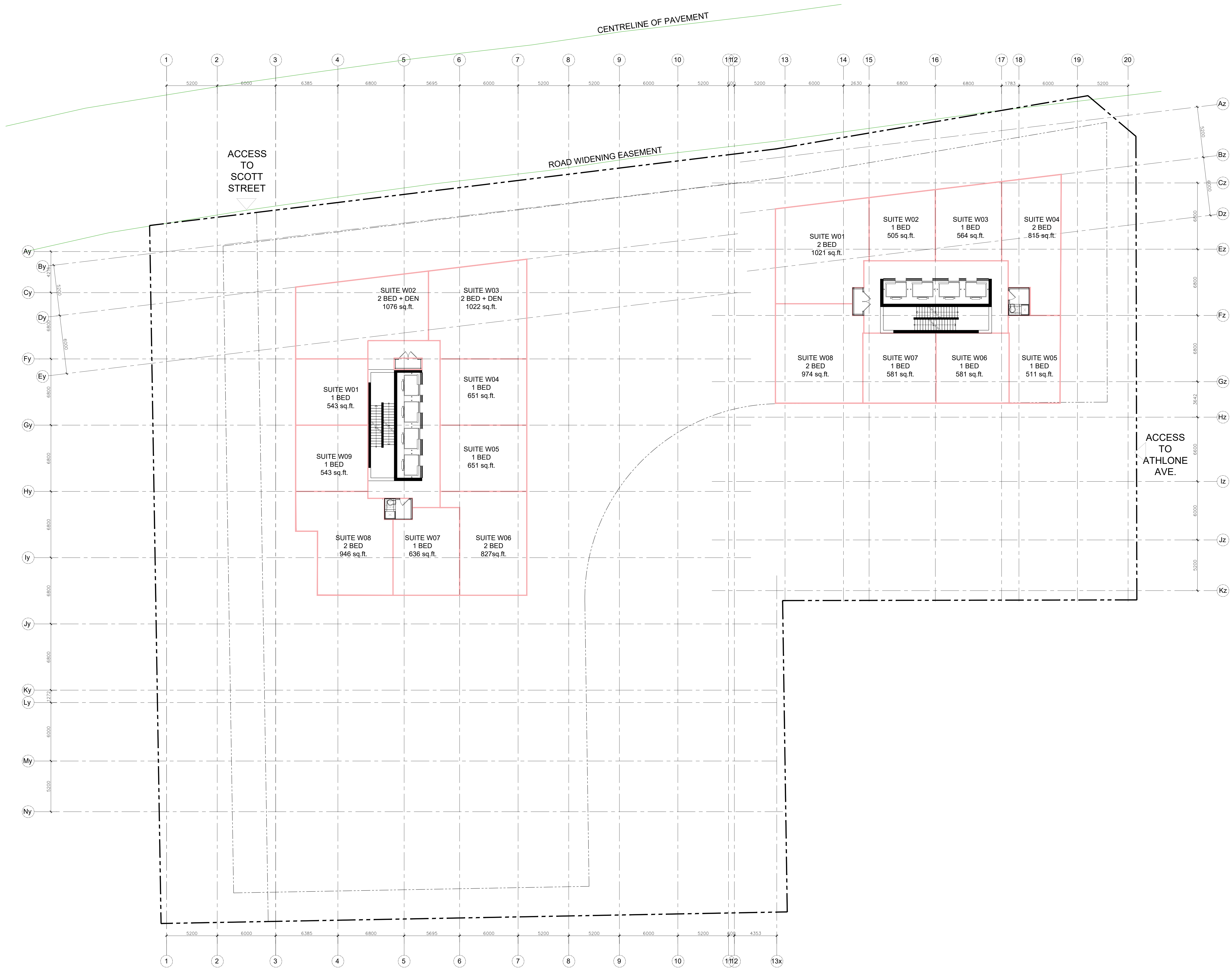
CIVIL
 NOVATECH
 T 613-254-9643 X209

LANDSCAPE ARCHITECT
 PROJECT PASSAGE
 SERGE GALLANÉ
 T 514-891-5442

TRANSPORTATION
 NOVATECH
 JENNIFER LUONG
 T 613-254-9643 X254

ENVIRONMENTAL
 GRADIENT WIND ENGINEERING
 JOSHUA FOSTER
 T 613-834-0634

SURVEYOR
 STANTEC
 BRIAN WEBSTER
 T 613-229-7644



no.	date	revision
2	23-04-07	ISSUED FOR REZONING
1	21-06-08	CITY OF OTTAWA PRECONSULTATION

It is the responsibility of the appropriate contractor to check and verify all dimensions on site and report all errors and/or omissions to the architect.

All contractors must comply with all pertinent codes and by-laws.

Do not scale drawings.

This drawing may not be used for construction until signed.

Copyright reserved.

Hobin Architecture Incorporated
 63 Pamela Street
 Ottawa, Ontario
 Canada K1S 3K7
 T: 613 238 7200
 F: 613 235 2005
 E: mail@hobinarc.com
 hobinarc.com

PROJECT LOCATION:
 MORLEY HOPPNER LTD.
 314 & 318 ATHLONE AVE., 2006, 2020, 2026 SCOTT ST.
 OTTAWA ON.

DRAWING TITLE:
 LEVEL 36-38

DRAWN BY: PB **DATE:** 22-04-05 **SCALE:** 1/150

PROJECT: 2126

DRAWING NO.: A1.01

REVISION NO.:

PROJECT TEAM

ARCHITECT
 HOBIN ARCHITECTURE
 PATRICK BISSON
 T 613-238-7200

PLANNING
 FOTENY CONSULTANTS INC.
 ANGELO TREMBLAY
 T 613-730-5709

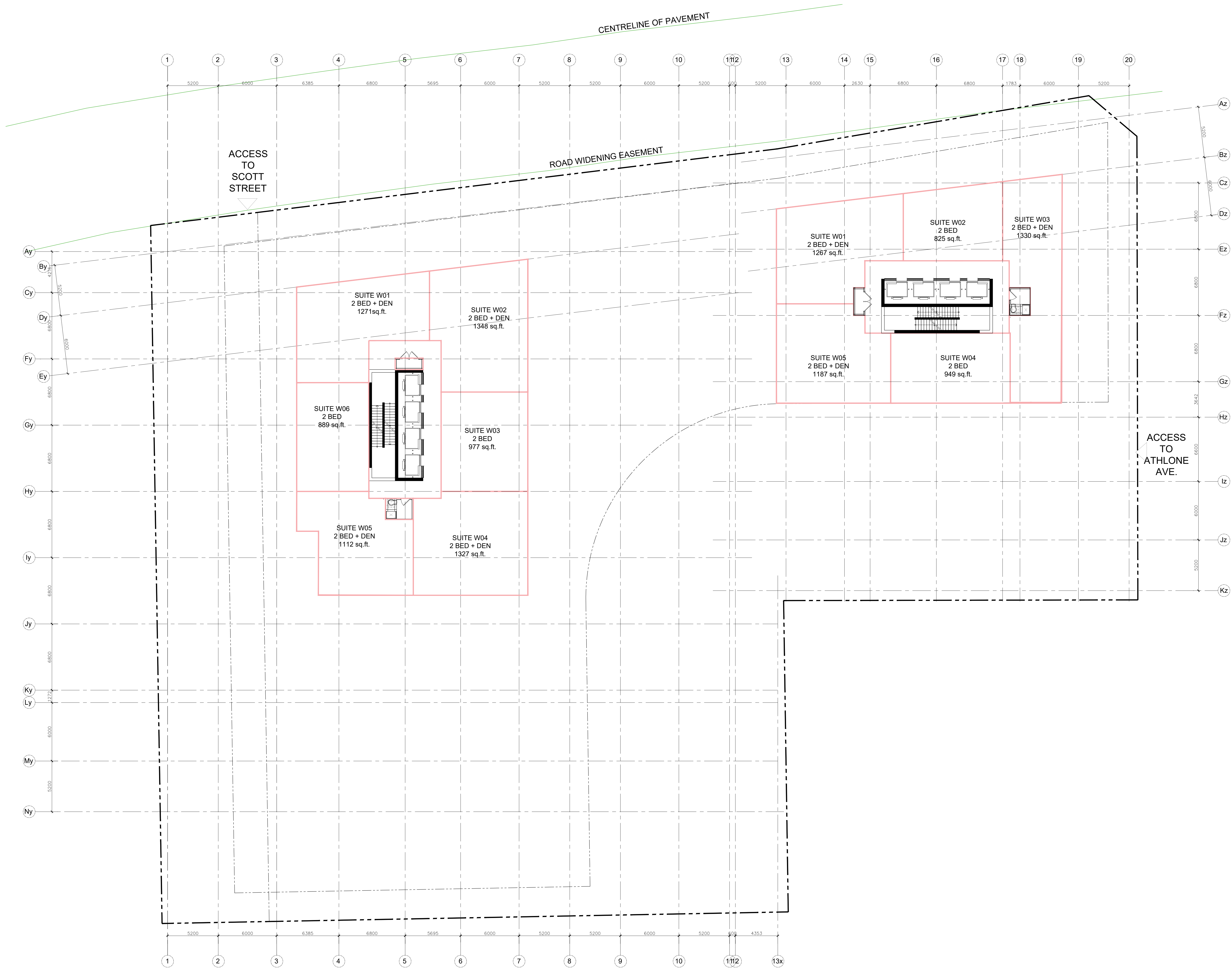
CIVIL
 NOVATECH
 LEE SHEETS
 T 613-254-9643 X209

LANDSCAPE ARCHITECT
 PROJECT PACKAGE
 SERGE GALLANER
 T 514-891-5442

TRANSPORTATION
 NOVATECH
 JENNIFER LUONG
 T 613-254-9643 X254

ENVIRONMENTAL
 GRADIENT WIND ENGINEERING
 JOSHUA FOSTER
 T 613-836-0634

SURVEYOR
 STANTEC
 BRIAN WEBSTER
 T 613-229-7644



no.	date	revision
2	23-04-07	ISSUED FOR REZONING
1	21-06-08	CITY OF OTTAWA PRECONSULTATION

It is the responsibility of the appropriate contractor to check and verify all dimensions on site and report all errors and/or omissions to the architect.

All contractors must comply with all pertinent codes and by-laws.

Do not scale drawings.

This drawing may not be used for construction until signed.

Copyright reserved.

Hobin Architecture Incorporated
 63 Pamela Street
 Ottawa, Ontario
 Canada K1S 3K7
 T: 613 238 7200
 F: 613 235 2005
 E: info@hobin.com
 hobin.com

PROJECT LOCATION:
 MORLEY HOPPNER LTD.
 314 & 318 ATHLONE AVE., 2006, 2020, 2026 SCOTT ST.
 OTTAWA ON.

DRAWING TITLE:
 LEVELS 39-40

DRAWN BY: PB **DATE:** 22-04-05 **SCALE:** 1/150

PROJECT: 2126

DRAWING NO.: A1.01

REVISION NO.: