

NOTES:

- DO NOT SCALE DRAWINGS;
- NOTES ARE APPLICABLE TO ALL DRAWINGS IN THE SET;
- Fotenn Consultants Inc. IS NOT RESPONSIBLE FOR ACCURACY OF BASE INFORMATION;
- REFER TO CIVIL ENGINEERING DRAWINGS FOR GRADING & SITE SERVICING INFORMATION;
- THE CONTRACTOR IS RESPONSIBLE FOR CONFIRMING SITE CONDITIONS AND REPORTING ANY DISCREPANCIES TO THE LANDSCAPE ARCHITECT;
- THE CONTRACTOR IS RESPONSIBLE FOR CONFIRMING EXACT LOCATIONS OF ALL UNDERGROUND SERVICES AND OBTAINING CLEARANCE FROM ALL APPLICABLE UTILITIES. PROPOSED WORKS FOUND TO BE IN CONFLICT WITH UNDERGROUND SERVICES MAY BE ADJUSTED AT THE DIRECTION OF THE LANDSCAPE ARCHITECT;
- LANDSCAPE ELEMENTS SHOWN ARE SUBJECT TO THE FINAL LOCATION OF UNDERGROUND SERVICES AND UTILITIES;
- DO NOT INSTALL TREES ON PROPERTY / LOT LINES OR WITHIN DRAINAGE EASEMENTS;
- PERFORM WORK IN ACCORDANCE WITH DETAILS AND SPECIFICATIONS;
- ALL PLANT MATERIAL SHALL BE No. 1 NURSERY STOCK AND SHALL MEET OR EXCEED THE SPECIFICATION OF THE Canadian Standards for Nursery Stock, AS PUBLISHED BY THE Canadian Nursery Landscape Association;
- SPECIES SUBSTITUTIONS ARE NOT PERMITTED WITHOUT PRIOR WRITTEN APPROVAL OF THE LANDSCAPE ARCHITECT;
- ALL UN-PAVED SURFACES TO RECEIVE 150mm DEPTH TOPSOIL & SOD.

CITY OF OTTAWA STANDARDS FOR TREE PLANTING:

- MAINTAIN A MINIMUM DISTANCE OF 3.0m FROM ALL HYDRO TRANSFORMERS;
- MAINTAIN A MINIMUM DISTANCE OF 2.5m FROM FIRE HYDRANTS AND NO PLANTING IN FRONT OF HYDRANTS;
- MAINTAIN A MINIMUM DISTANCE OF 1.0m FROM ALL UNDERGROUND SERVICES;
- MAINTAIN A MINIMUM DISTANCE OF 1.0m FROM ALL BELL AND CABLE BOXES;

IMPORTANT NOTICE FOR CONTRACTOR:

THE CITY OF OTTAWA REQUIRES A Certificate of Completion (F1) Landscape Works TO BE SUBMITTED AND SEALED BY THE LANDSCAPE ARCHITECT. CONTRACTORS ARE RESPONSIBLE FOR FAMILIARIZING THEMSELVES WITH THE REQUIREMENTS OF THIS PROCESS AND PROVIDING SUFFICIENT NOTICE TO THE LANDSCAPE ARCHITECT TO CONDUCT SITE REVIEWS DURING INSTALLATION OF TREES. THE 1 YEAR WARRANTY PERIOD SHALL NOT COMMENCE UNTIL THE LANDSCAPE ARCHITECT HAS SUBMITTED THE F1 Certificate. PRIOR TO INSTALLATION OF TREES, THE DEVELOPER WILL CONTACT THE PLANNING AND GROWTH MANAGEMENT AND FORESTRY SERVICES TO REVIEW THE SPECIES AND LOCATION OF TREES.

PLANTING SCHEDULE

KEY	QTY	BOTANICAL NAME	COMMON NAME	SIZE / CONDITION / SPACING
DECIDUOUS/CONIFEROUS TREES				
AC	4	Amelanchier canadensis	Serviceberry	50mm cal. / W.B. (tree form)
AF	3	Acer x freemanii	Freeman's Maple	70mm cal. / W.B.
BP	3	Betula pendula	Silver Birch	50mm cal. / W.B. (tree form)
GB	4	Ginkgo biloba	Maidenhair Tree	70mm cal. / W.B.
GT	4	Gleditsia triacanthos var. inermis 'Street Keeper'	Street Keeper Honeylocust	70mm cal. / W.B.
PG	3	Picea glauca	White Spruce	175cm ht. / W.B.
SR	5	Syringa reticulata 'Ivory Silk'	Ivory Silk Japanese Lilac	50mm cal. / W.B. (tree form)
TA	3	Tilia americana	Basswood	70mm cal. / W.B.
UA	4	Ulmus americana 'Princeton'	Princeton Elm	70mm cal. / W.B.
SHRUBS				
Cs	102	Cornus sericea 'Arctic Fire™' (Farrow)	Arctic Fire Dogwood	#3 Pot / 75cm o.c.
Iv	6	Ilex verticillata	Winterberry	#3 Pot / 80cm o.c.
Rr	39	Rosa rugosa 'Alba'	White Rugosa Rose	#3 Pot / 80cm o.c.
Tc	77	Taxus cuspidata 'Nana'	Dwarf Japanese Yew	#3 Pot

PERENNIALS / GRASSES

KEY	QTY	BOTANICAL NAME	COMMON NAME	SIZE / CONDITION / SPACING
Ca	213	Calamagrostis acutiflora 'Karl Foerster'	Feather Reed Grass	#2 Pot / 50cm o.c.
Ce	108	Carex elata 'Aurea'	Bowes Golden Sedge	#1 Pot / 40cm o.c.
Dc	38	Deschampsia cespitosa 'Goldtau'	Tufted Hair Grass	#2 Pot / 50cm o.c.
Ep	288	Echinacea purpurea	Coneflower	#1 Pot / 45cm o.c.
Hea	133	Hemerocallis 'Africa'	Africa Daylily	#2 Pot / 50cm o.c.
Hej	146	Hemerocallis 'Joan Senior'	Joan Senior Daylily	#2 Pot / 50cm o.c.
Hep	333	Hemerocallis Purple de Oro'	Purple D'Oro Daylily	#1 Pot / 35cm o.c.
Hg	122	Hosta 'Touch of Class'	Touch of Class Hosta	#2 Pot / 80cm o.c.
Pa	127	Pennisetum alopecuroides 'Hameln'	Dwarf Fountain Grass	#2 Pot / 50cm o.c.
Pi	205	Perovskia x 'Little Spire'	Little Spire	#2 Pot / 50cm o.c.
Pn	92	Panicum virgatum 'Northwind'	Northwind Switch Grass	#2 Pot / 70cm o.c.
Pq	21	Parthenocissus quinquefolia	Virginia Creeper	#1 Pot / 600cm o.c.
Pt	22	Parthenocissus tricuspidata 'Vetchil'	Boston Ivy	#1 Pot / 600cm o.c.
Pv	113	Panicum virgatum 'Prairie Fire'	Prairie Fire Switchgrass	#2 Pot / 70cm o.c.
Rf	163	Rudbeckia fulgida var. sullivantii 'Little Goldstar'	Black Eyed Susan	#1 Pot / 45cm o.c.
Ss	239	Salvia x sylvestris 'May Night'	May Night Sage	#1 Pot / 35cm o.c.

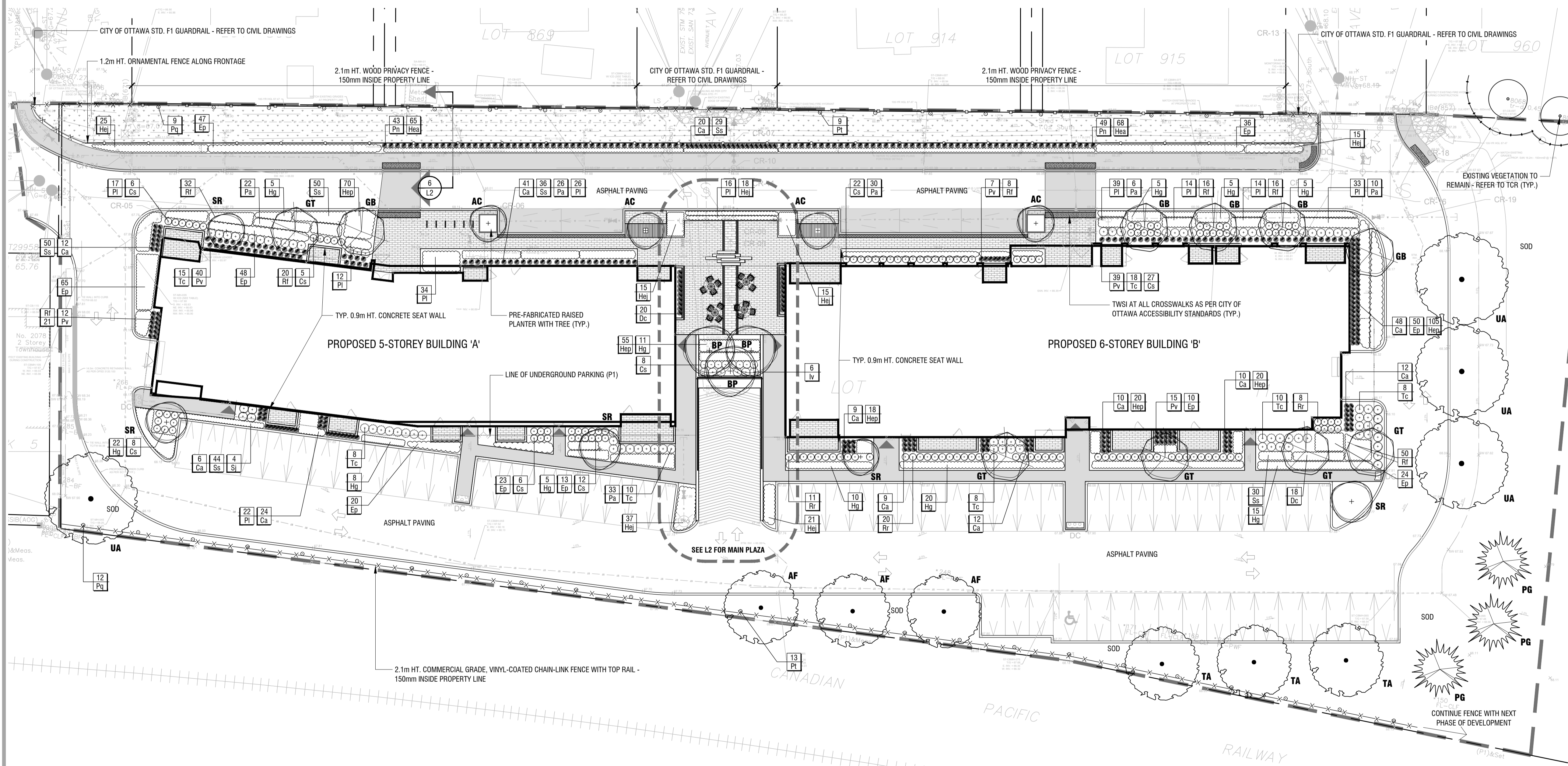
Copyright Reserved
The Copyrights to all designs and drawings are the property of Fotenn Consultants Inc. Unauthorized reproduction or use is forbidden. DO NOT SCALE DRAWING
Copyright réservés
Les droits d'auteur à tous les modèles et dessins sont la propriété de Fotenn Consultants Inc. Toute reproduction ou utilisation non autorisée est interdite. NE PAS L'ÉCHELLE DE DESSIN

Client / Client



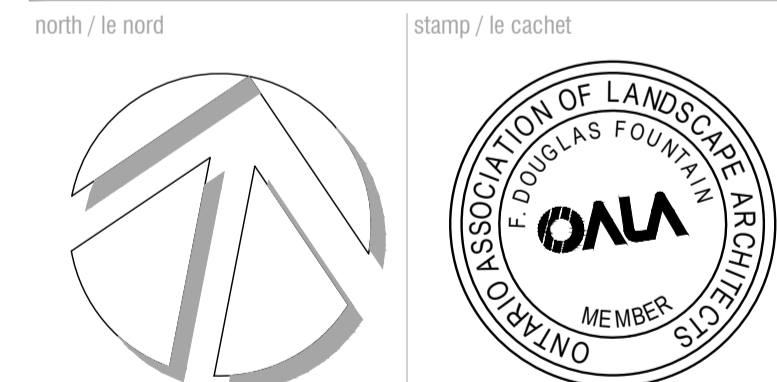
- Legend / légende
- BOUNDARY OF APPLICATION
 - EXISTING TREES TO REMAIN
 - CRITICAL ROOT ZONE
 - TREE PROTECTION FENCING
 - DECIDUOUS TREES (SEE PLANTING NOTES & SCHEDULE FOR SPECIES AND QUANTITIES)
 - CONIFEROUS TREES (SEE PLANTING NOTES & SCHEDULE FOR SPECIES AND QUANTITIES)
 - SHRUBS (SEE PLANTING NOTES & SCHEDULE FOR SPECIES AND QUANTITIES)
 - ORNAMENTAL GRASSES (SEE PLANTING NOTES & SCHEDULE FOR SPECIES AND QUANTITIES)
 - PERENNIAL MASSING (SEE PLANTING NOTES & SCHEDULE FOR SPECIES AND QUANTITIES)
 - PLANT KEY
 - BENCH
 - BIKE RACK
 - 2.1m HT. WOOD PRIVACY FENCE
 - 2.1m HT. COMMERCIAL GRADE, VINYL-COATED CHAIN-LINK FENCE / GUARDRAIL
 - 1.2m HT. ORNAMENTAL METAL FENCE
 - NATURALIZED SEED MIX (OSC LOW MAINTENANCE RETENTION BASIN MIXTURE 8220)

PRELIMINARY
NOT FOR CONSTRUCTION



rev/n	description / la description	yyyy/mm/dd
8	re-issue for minor ZBLA	2022/05/24
7	re-issue for SPA	2020/12/21
6	revised per City comments	2020/04/27

FOTENN Planning + Design
396 Cooper Street, Suite 300
Ottawa, ON, CANADA K2P 2H7
613.730.5709
fotenn.com



project / projet
1399 AVENUE U
drawing / dessin

LANDSCAPE PLAN

designed / conçu	drawn / dessiné	reviewed / examiné
OM / DF	OM	DF
date	PLAN NUMBER: 18089	
April 2019		

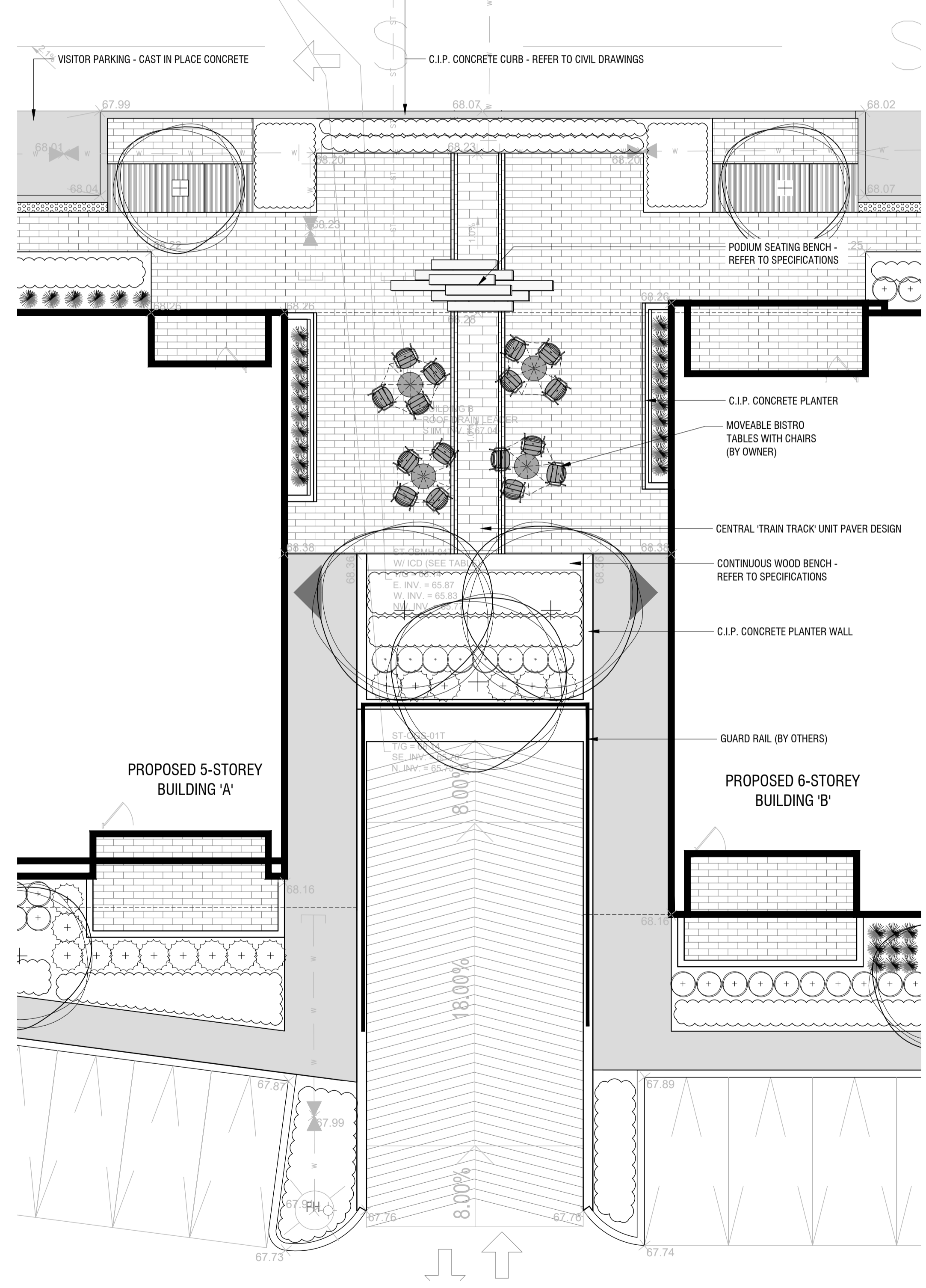
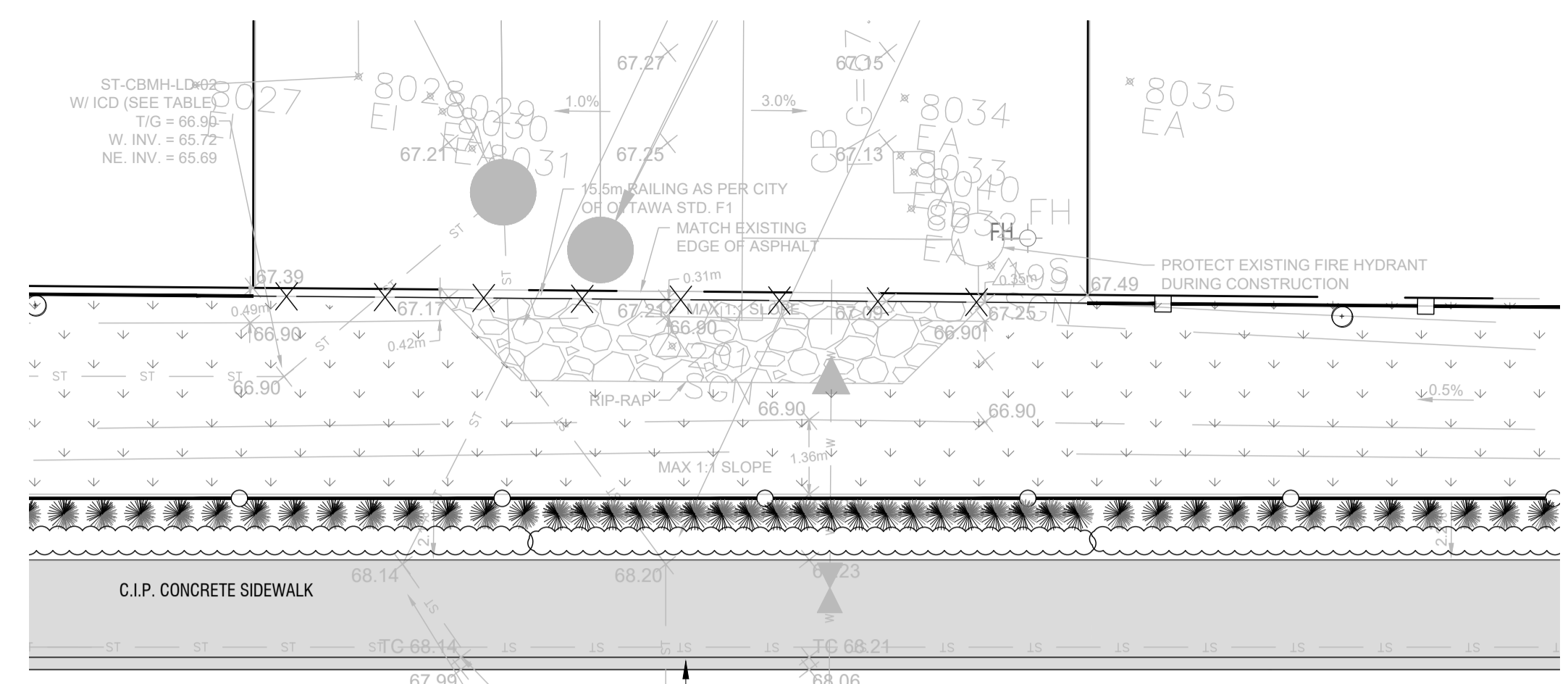
drawing number / No. du dessin
L1 of 2

Client / Client

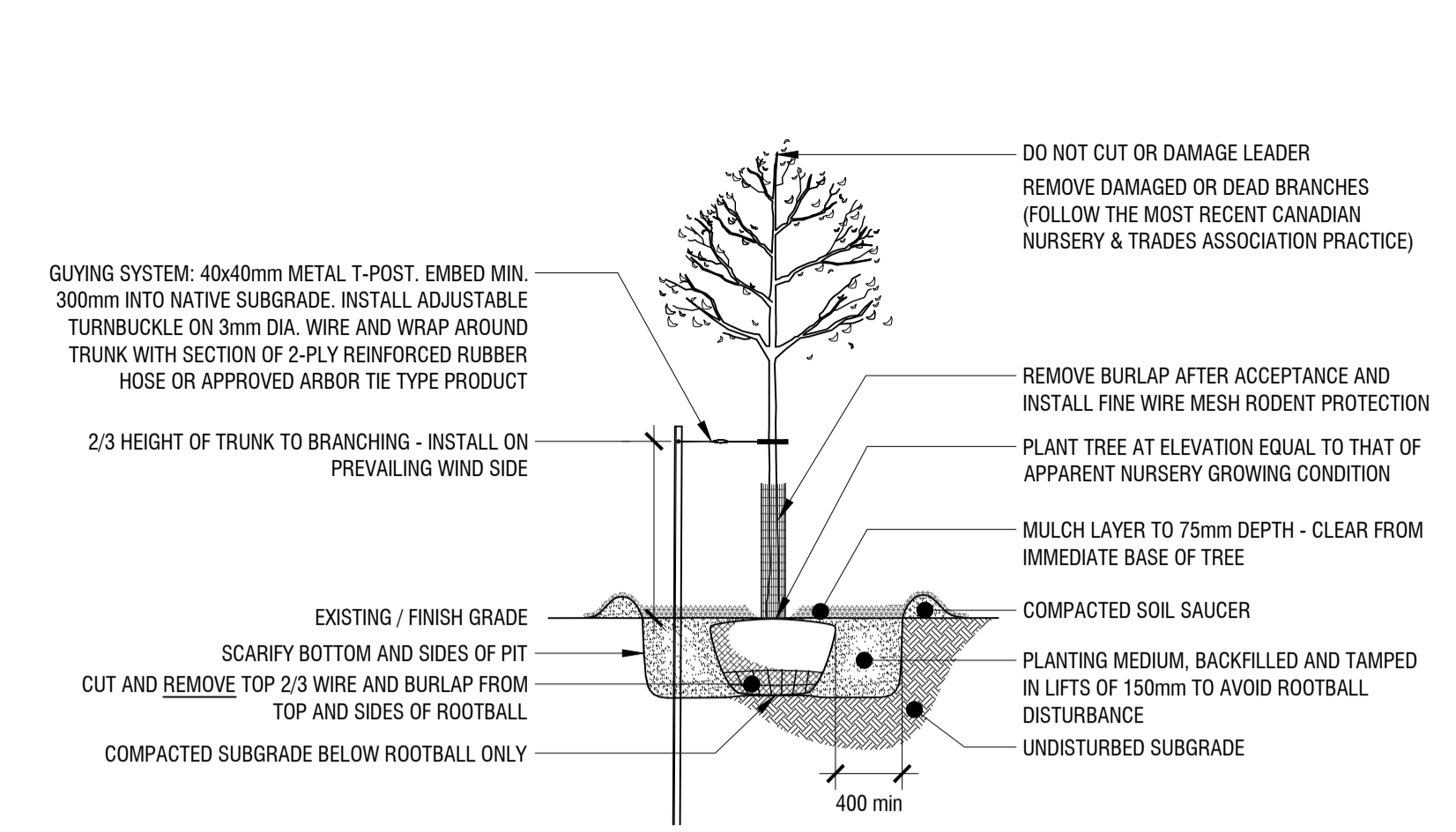


Legend / légende

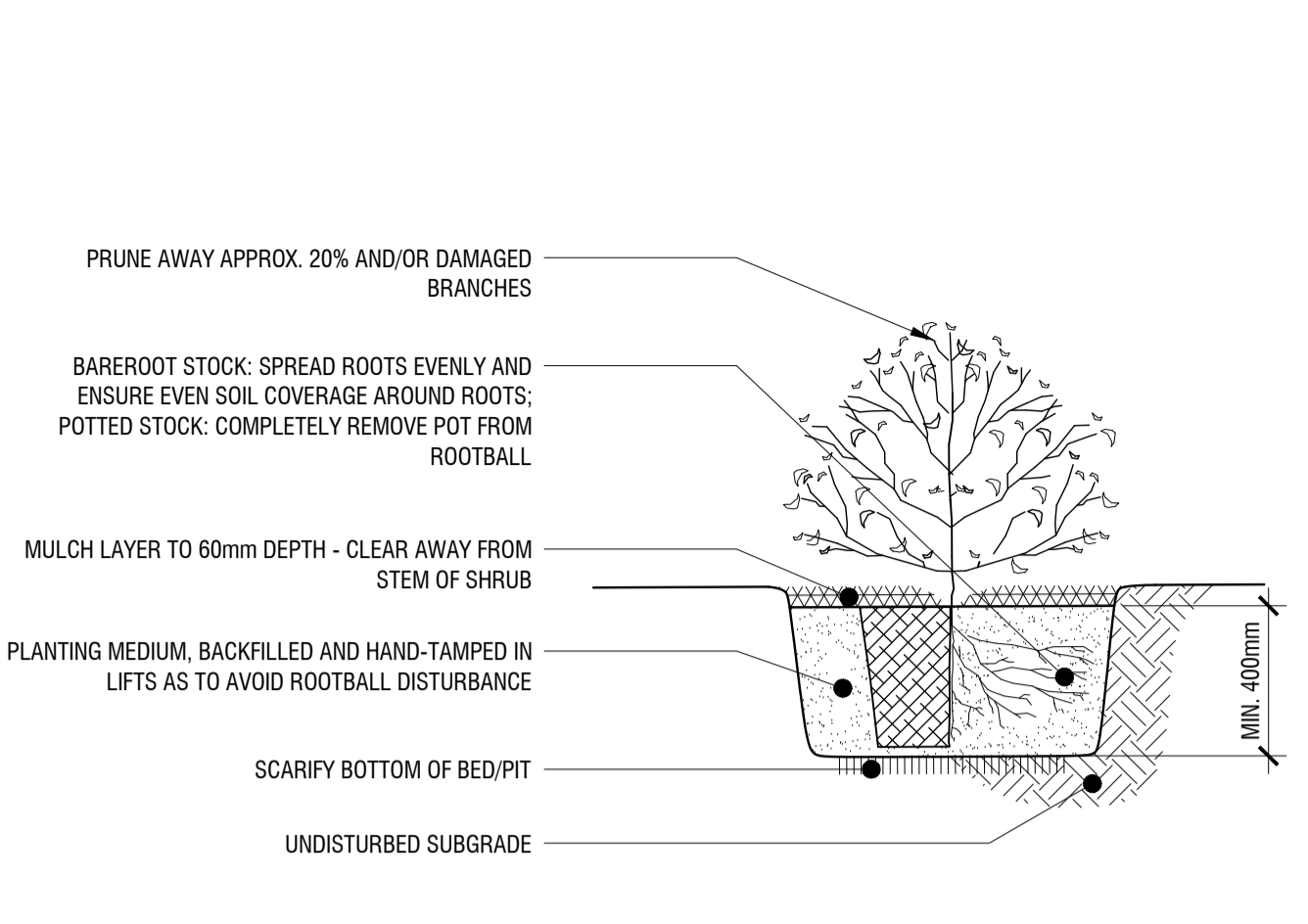
- DECIDUOUS TREES (SEE PLANTING NOTES & SCHEDULE FOR SPECIES AND QUANTITIES)
- CONIFEROUS TREES (SEE PLANTING SCHEDULE FOR SPECIES AND QUANTITIES)
- SHRUBS (SEE PLANTING NOTES & SCHEDULE FOR SPECIES AND QUANTITIES)
- ORNAMENTAL GRASSES (SEE PLANTING NOTES & SCHEDULE FOR SPECIES AND QUANTITIES)
- PERENNIAL MASSING (SEE PLANTING NOTES & SCHEDULE FOR SPECIES AND QUANTITIES)
- PLANT KEY
- BENCH
- BIKE RACK
- 2.1m HT. WOOD PRIVACY FENCE
- 2.1m HT. COMMERCIAL GRADE, VINYL-COATED CHAIN-LINK FENCE / GUARDRAIL
- 1.2m HT. ORNAMENTAL METAL FENCE
- NATURALIZED SEED MIX (OSC LOW MAINTENANCE RETENTION BASIN MIXTURE 8220)



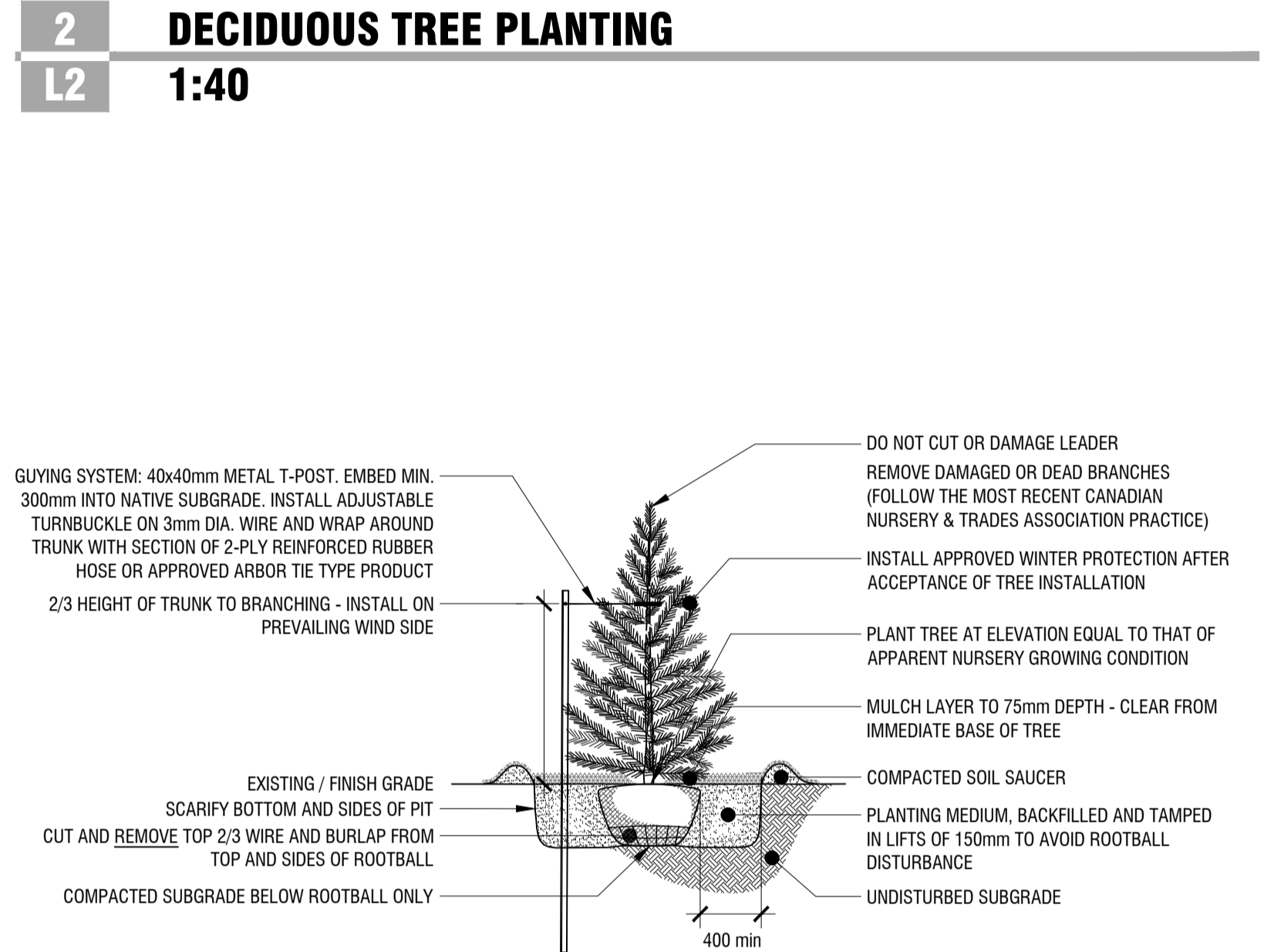
1 ENLARGEMENT - MAIN PLAZA
 L2 1:100



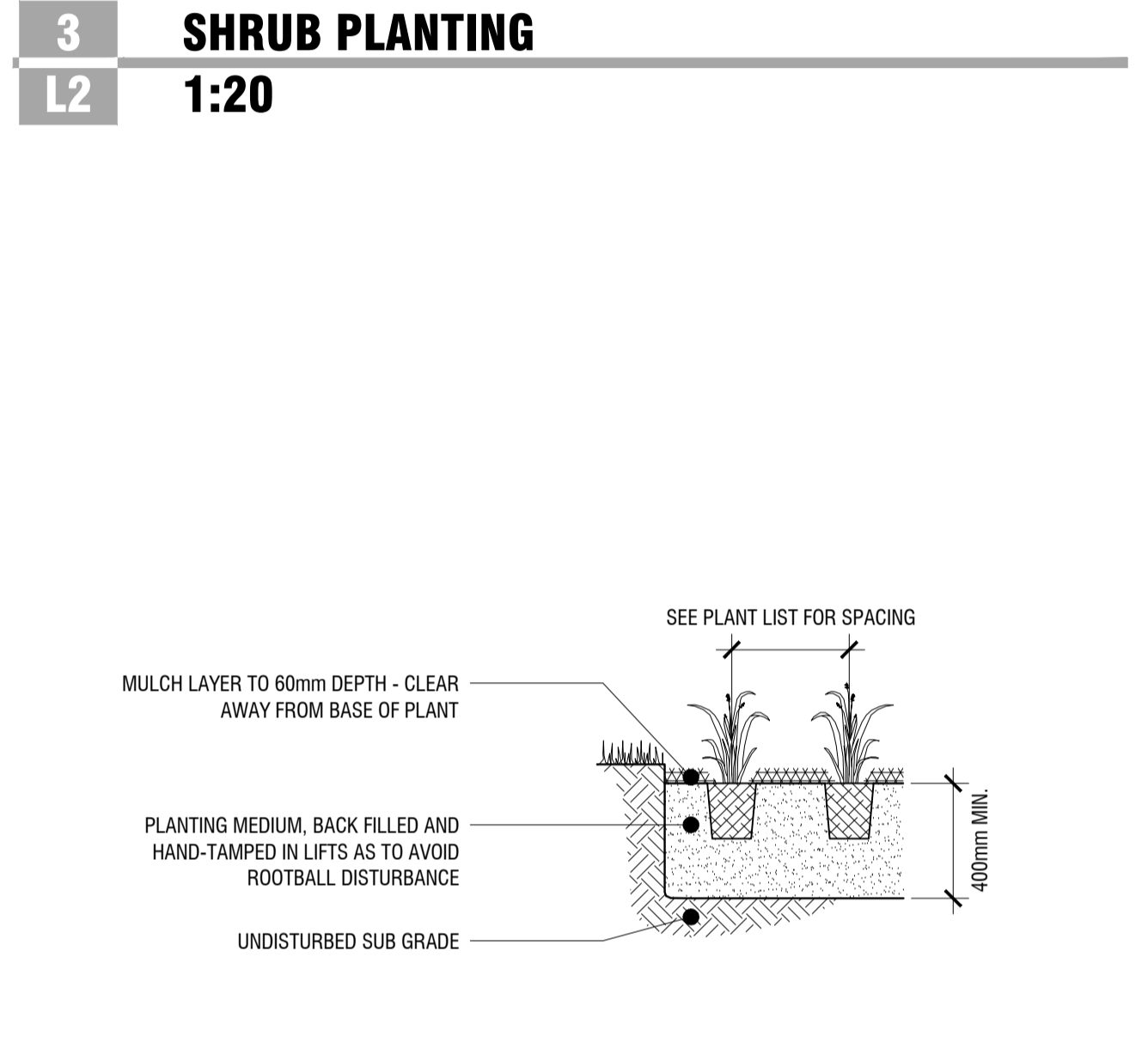
2 DECIDUOUS TREE PLANTING
 L2 1:40



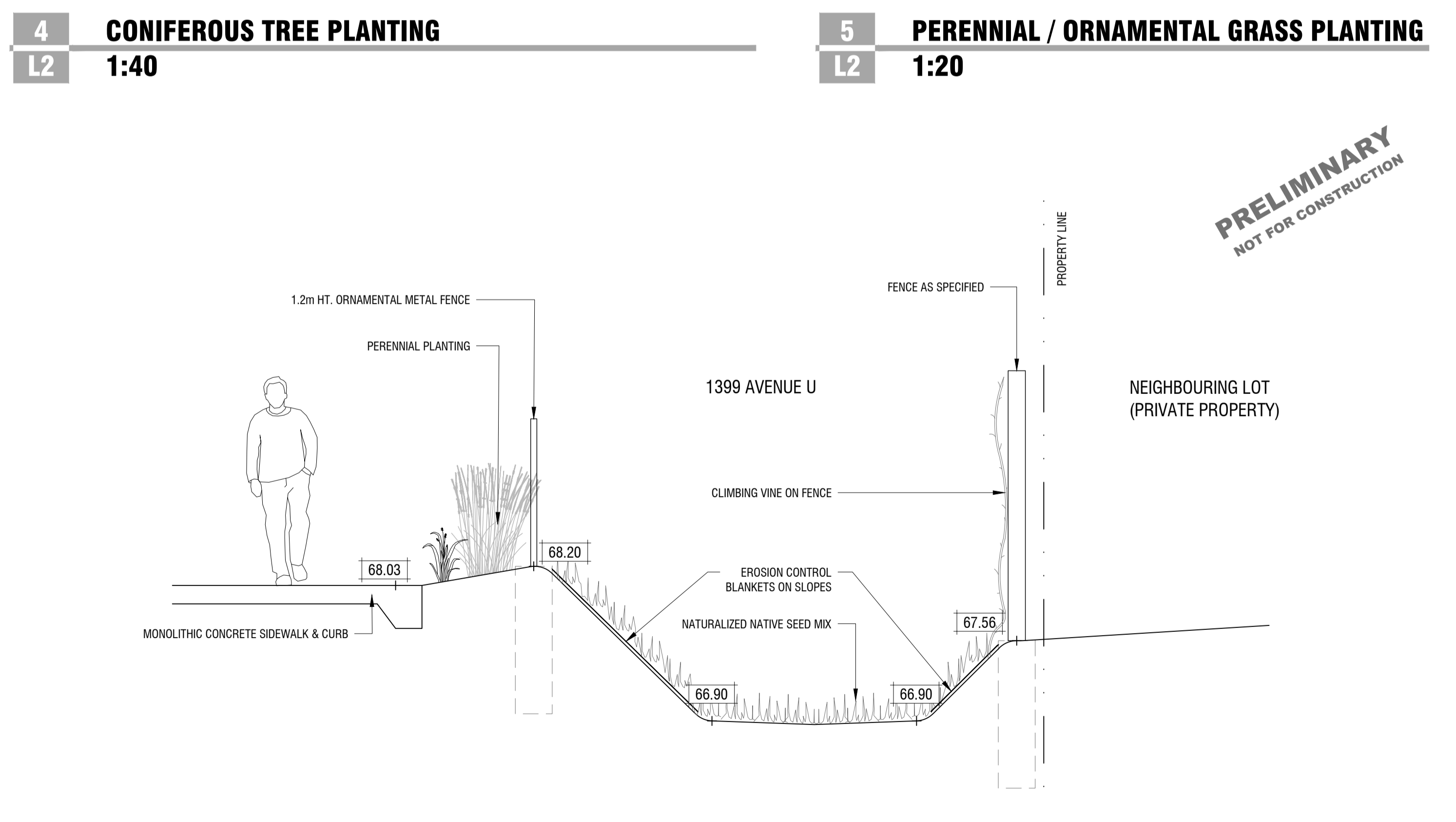
3 SHRUB PLANTING
 L2 1:20



4 CONIFEROUS TREE PLANTING
 L2 1:40



5 PERENNIAL / ORNAMENTAL GRASS PLANTING
 L2 1:20



6 SECTION - SWALE
 L2 1:30

PRELIMINARY
 NOT FOR CONSTRUCTION

rev'n	description / la description	yyyy/mm/dd
8	re-issue for minor ZBLA	2022/05/24
7	re-issue for SPA	2020/12/21
6	revised per City comments	2020/04/27

FOTENN Planning + Design
 396 Cooper Street, Suite 300
 Ottawa, ON, CANADA K2P 2H7
 613.730.5709
 fotenn.com

north / le nord stamp / le cachet

project / projet
1399 AVENUE U
 drawing / dessin

PLAN ENLARGEMENTS & DETAILS

designed / conçu	drawn / dessiné	reviewed / examiné
OM / DF	OM	DF
date	PLAN NUMBER: 18089	
April 2019		

drawing number / No. du dessin