

Drawing Remains the Property of/Copyright Reserved by Gino J. Aiello Landscape Architect. Do Not Use or Reproduce Without Approval of Gino J. Aiello.  
**NOT To Be Used For Construction Unless** indicated by Revision: **"FOR LANDSCAPE CONSTRUCTION"**.  
**Contractor is Responsible** for Verification of Site Locations of all Utilities. Report any Discrepancies Between Site and Drawing Immediately to Gino J. Aiello. Do NOT Proceed Until Clarified.  
 TURF AREAS TO BE SOD C/W 150MM DEPTH TOPSOIL ON APPROVED SUBGRADE | SOD TO BE #1 GRADE TURFGRASS NURSERY SOD per NSGA - Fine Fescue/Kentucky Bluegrass Sod | PLANTING MIX TO BE APPROVED BY LANDSCAPE ARCHITECT | PLANT MATERIAL TO MEET CNLA STANDARDS/BE APPROVED BY LANDSCAPE ARCHITECT PRIOR TO PLANTING | ALL MATERIALS & WORK TO BE MAINTAINED UNTIL FINAL ACCEPTANCE. (MOWING TURF, WEEDING BEDS, WATERING TURF & PLANTS) & INCLUDE 1 YEAR WARRANTY FROM DATE OF FINAL ACCEPTANCE | PROVIDE WATERING OF ALL PLANT MATERIAL AS REQUIRED FOR PROPER ESTABLISHMENT, UNTIL END OF WARRANTY PERIOD | REFER TO CIVIL ENGINEER'S DRAWING FOR ELEVATIONS / GRADING |  
 The Landscape Plan is to be read in conjunction with the grading, servicing, site and survey plan | Bare root material to be planted in season only | All plant material locations to be staked on site by the landscape contractor and checked by the landscape architect prior to planting | All trees to be preserved on or directly adjacent to the site will be protected | Plant material are to be installed a minimum of, 3.0m away from any part of any hydro transformer, 3.0m corridor between a fire hydrant and the curb, a 2.5m radius beside or behind a fire hydrant, 2.0m from any servicing/utility line or structure |

REFER TO TCR BY IFS

- Existing Tree to Remain
- Existing Tree to be Removed
- Protection for Existing Trees

LANDSCAPE PLAN LEGEND

- Proposed Coniferous Tree
- Proposed Deciduous Tree
- Proposed Planting Bed
- Proposed Pavers

BELOW GRADE SERVICES REFER TO CIVIL /CUP

- U/G Water Service
- U/G Storm Service
- U/G Sanitary Service
- Fire Hydrant
- FD Siamese Connection

2	SECOND SUBMISSION SPC	AUGUST 04 2022
1	FIRST SUBMISSION SPC	OCTOBER 26 2021
0	COORDINATION / REVIEW	OCTOBER 2021
No.	Revision	Date

**PARK RIVER PROPERTIES**  
 206-900 BOULEVARD DE LA CARRIERE,  
 GATINEAU, QC, J8Y 6T5

Property Owner

Gino J. Aiello | landscape architect GJALA.com  
 GJA Inc. Gino@GJALA.com (613) 286 5130  
 110 Deabury Road Unit # 9 | Ottawa Ontario | K2T 0C2

**MIXED USE DEVELOPMENT**

Project 16 EDGEWATER STREET KANATA

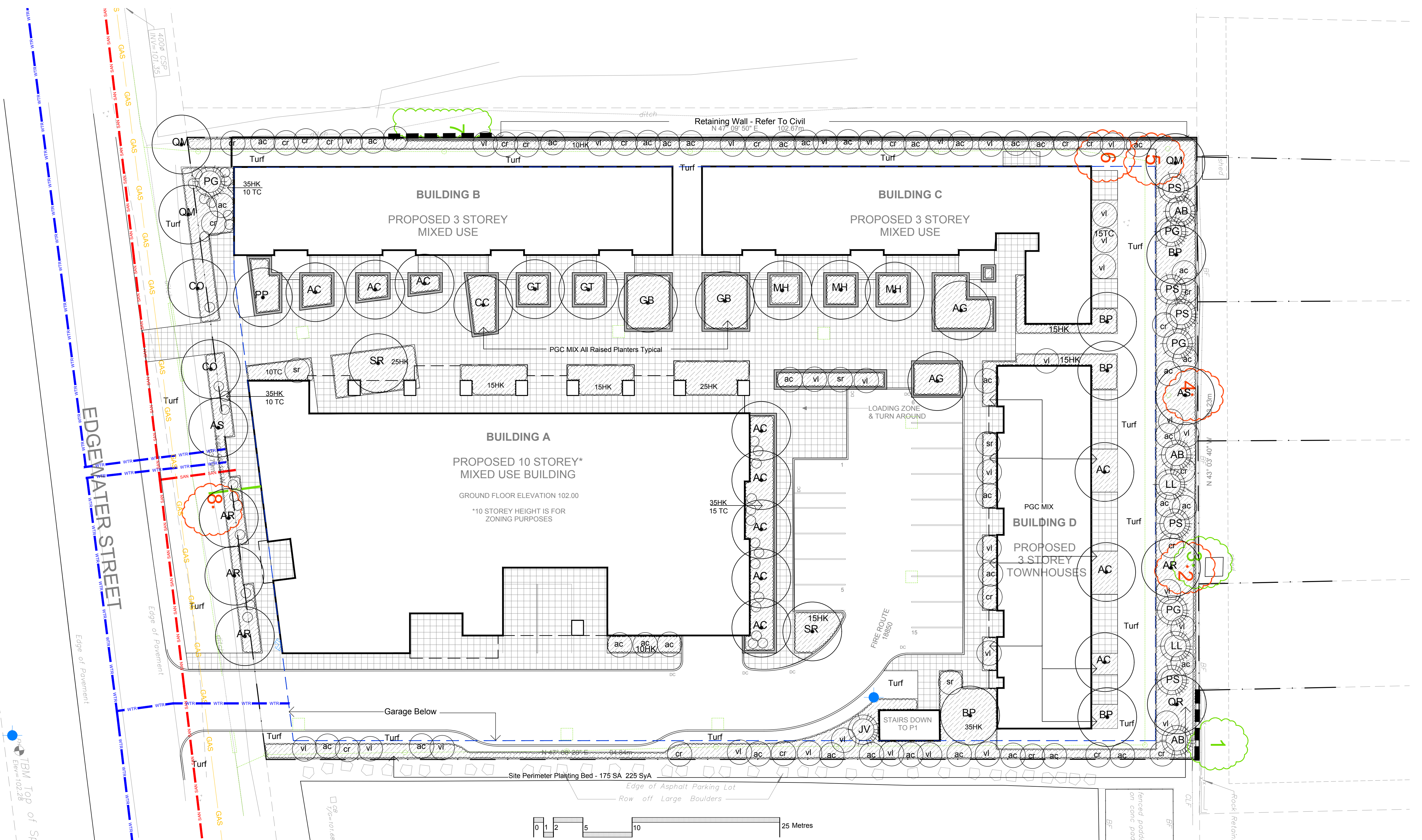
Drawing **Landscape Plan**

Scale: 1:200

City of Ottawa  
 Dwg - 18623

**L1**

D07-12-21-0176



CALLIPER B AND B TREES - 16 EDGEWATER KANATA

Code	Qty	Botanical Name	Common Name	Size	Condition
AC	11	Amaranthus canadensis	Tree Serviceberry	50mm cal	B + B specimen
AS	2	Aesculus glabra	Ohio Buckeye	60mm cal	B + B specimen
AR	4	Acer rubrum	Red Maple	70mm cal	B + B specimen
AS	2	Acer saccharum	Sugar Maple	70mm cal	B + B specimen
BR	5	Betula papyrifera	Paper Birch	60mm cal	B + B specimen
CC	1	Carpinus caroliniana	Hornbeam/Bluebeech	50mm cal	B + B specimen
CO	2	Celtis occidentalis	Common Hackberry	70mm cal	B + B specimen
GD	2	Gonipha glabra	Madagascar Tree	50mm cal	B + B specimen
GD	1	Gymnocladia dioica	Kentucky Coffee Tree	60mm cal	B + B specimen
GL	2	Gleditsia triacanthos 'Skyline'	Spiny Locust	60mm cal	B + B specimen
MH	3	Malus 'Harvest Gold'	Harvest Gold Crabapple	50mm cal	B + B specimen
PP	1	Prunus pennsylvanica	Pin Cherry	60mm cal	B + B specimen
QM	3	Quercus macrocarpa	Bur Oak	70mm cal	B + B specimen
QR	1	Quercus rubra	Red Oak	60mm cal	B + B specimen
SL	2	Syringa reticulata	Japanese Tree Lilac	50mm cal	B + B specimen
AB	3	Abies balsamea	Balsam Fir	1.75m Ht.	B + B specimen
JV	3	Juniperus virginiana	Eastern Red Cedar	1.5m Ht.	B + B specimen
LL	3	Larix laricina	Eastern Larch/ Tamarack	1.75m Ht.	B + B specimen
PG	3	Picea glauca	White Spruce	2.0m Ht.	B + B specimen
PS	3	Pinus strobus	White Pine	1.5m Ht.	B + B specimen

SHRUBS - 16 EDGEWATER KANATA

Code	Qty	Botanical Name	Common Name	Size	Condition
ac	35	Amaranthus canadensis	Serviceberry	80cm Ht.	Pot
cr	35	Cornus racemosa	Grey Dogwood	80cm Ht.	Pot
ht	300	Hypericum perforatum	St. John's Wort	30cm Ht.	Pot
ya	225	Symphoricarpos albus	Snowberry	60cm Ht.	Pot
sa	175	Spiraea alba	Meiblowmeek	60cm Ht.	Pot
vi	35	Viburnum lentago	Nannyberry	80cm Ht.	Pot
tc	60	Taxus cuspidata 'Nana'	Dwarf Japanese Yew	40cm spr	Pot

PGC MIX - Layout on Site Buy GJA Inc.

Code	Qty	Botanical Name	Common Name	Condition	
25	25	Aubelia x arbutifolia	various Aubelia	8cm Pot	
55	55	Auga reptans	Algae	8cm Pot	
55	55	Arctostaphylos uva-ursi	Bearberry	8cm Pot	
75	75	Calamagrostis	Feather Reed Grass	8cm Pot	
55	55	Calamagrostis acutiflora 'Overdam'	Feather Reed Grass	8cm Pot	
95	95	Echinacea	Purple Coneflower	8cm Pot	
125	125	Geranium macrorrhizum	Bigleaf Geranium	8cm Pot	
125	125	Geranium psillostemon 'Gerwat'	Rozanne Geranium	8cm Pot	
75	75	Hemerocallis	various Specimen Daylily	8cm Pot	
125	125	Panicum virgatum	Switch Grass	8cm Pot	
35	35	Hydrangea arborescens 'Annabelle'	Annabelle Hydrangea	40cm Ht.	Pot
35	35	Potentilla fruticosa 'Abbotswood'	Abbotswood Potentilla	30cm Ht.	Pot
25	25	Potentilla fruticosa 'Cocoonation Triumph'	Cocoonation Triumph Potentilla	30cm Ht.	Pot
35	35	Potentilla fruticosa 'Farreri'	Goldtop Potentilla	30cm Ht.	Pot
35	35	Prunella vulgaris 'amabilis'	Magpie Prunella	30cm pot	Pot
35	35	Spiraea bumalda 'Dart's Red'	Dart's Red Spiraea	30cm Ht.	Pot
35	35	Spiraea bumalda 'Magic Carpet'	Magic Carpet Spiraea	30cm Ht.	Pot
15	15	Spiraea bumalda 'Anthony Waterer'	Anthony Waterer Spiraea	40cm Ht.	Pot

