

May 4, 2022

APPROVED UNDER SECTION 51 OF THE PLANNING ACT BY THE CITY OF OTTAWA THIS _____ DAY OF _____, 20____.

STEPHEN WILLIS, MCIIP, RPP, GENERAL MANAGER
PLANNING, REAL ESTATE AND ECONOMIC
DEVELOPMENT DEPARTMENT, CITY OF OTTAWA

PLAN 4M-
I CERTIFY THAT THIS PLAN IS REGISTERED IN THE LAND REGISTRY OFFICE FOR THE LAND TITLES DIVISION OF OTTAWA-CARLETON No.4 AT _____ O'CLOCK ON THE _____ DAY OF _____, 2022 AND ENTERED IN THE PARCEL REGISTER FOR PROPERTY IDENTIFIER 14530-1235, AND THE REQUIRED CONSENTS ARE REGISTERED AS PLAN DOCUMENT NUMBER OC-_____.

REPRESENTATIVE FOR LAND REGISTRAR

THIS PLAN COMPRISES OF PART OF PIN 14530- AND PART OF PIN 14530-

**PLAN OF SUBDIVISION OF
PART OF LOTS 25 AND 26
CONCESSION 1 (OLD SURVEY)
AND PART OF LOT 70
REGISTERED PLAN 4M-XXXX
CITY OF OTTAWA**

Scale 1:750
0 20 40 METRES

METRIC CONVERSION
DISTANCES AND COORDINATES SHOWN ON THIS PLAN ARE IN METRES AND CAN BE CONVERTED TO FEET BY DIVIDING BY 0.3048

GRID SCALE CONVERSION
DISTANCES ARE GROUND AND CAN BE CONVERTED TO GRID BY MULTIPLYING BY THE COMBINED SCALE FACTOR OF 0.999970.

BEARING NOTE
BEARINGS ARE GRID, DERIVED FROM CAN-NET VRS NETWORK GPS OBSERVATIONS ON NCC HORIZONTAL CONTROL MONUMENTS 19773035 AND 19680191, CENTRAL MERIDIAN, 76° 30' WEST LONGITUDE MTM ZONE 9, NAD83 (ORIGINAL).

19773035 N:5006060.42 E:324888.04
19680191 N:5033564.26 E:388064.94

OBSERVED REFERENCE POINTS DERIVED FROM THE CAN-NET VRS NETWORK GPS OBSERVATIONS ON NCC HORIZONTAL CONTROL MONUMENTS 19773035 AND 19680191, CENTRAL MERIDIAN, 76° 30' WEST LONGITUDE MTM ZONE 9, NAD83 (ORIGINAL), COORDINATES TO URBAN ACCURACY PER SEC 14(2) OF O.REG. 216/10

ORP ID	NORTHING	EASTING
(A)	-	-
(B)	-	-

COORDINATES CANNOT, IN THEMSELVES, BE USED TO RE-ESTABLISH CORNERS OR BOUNDARIES SHOWN ON THIS PLAN.

LEGEND

Symbol	Denotes
□	DENOTES FOUND MONUMENTS SET MONUMENTS (B) UNLESS OTHERWISE STATED
IB	IRON BAR
SIB	ROUND IRON BAR
SSIB	STANDARD IRON BAR
CC	SHORT STANDARD IRON BAR
CP	CUT CROSS
CP	CONCRETE PIN
WIT	WITNESS
PIN	PROPERTY IDENTIFICATION NUMBER
MEAS	MEASURED
PROP	PROPORTIONED
OU	ORIGIN UNKNOWN
SC	STANTEC GEOMATICS LTD.
ORP	OBSERVED REFERENCE POINT
P1	REGISTERED PLAN 4M--

CURVE SCHEDULE

LOT/BLOCK	RADIUS	ARC	CHORD	BEARING
4	60.00	2.66	2.66	N49°39'20"E
5	60.00	7.77	7.77	N54°38'10"E
37	20.00	1.24	1.24	N59°09'45"E
38	20.00	11.40	11.25	N68°16'25"E
39	20.00	12.14	11.95	N78°00'20"W
40	20.00	11.15	11.01	N44°38'55"W
41	20.00	0.86	0.86	N27°27'00"W
59	20.00	1.62	1.62	N23°54'15"W
60	20.00	8.87	8.80	N08°52'40"E
61	20.00	9.34	9.33	N18°03'40"E
62	20.00	9.09	9.02	N45°19'15"E
92	18.00	7.15	7.10	N20°16'40"W
93	18.00	12.28	12.04	N10°38'40"E
94	18.00	8.85	8.76	N44°16'05"E

OWNER'S CERTIFICATE PART OF PIN 14530-

THIS IS TO CERTIFY THAT: LOTS 1 TO 69, BOTH INCLUSIVE, BLOCKS 70 TO 99, BOTH INCLUSIVE, THE STREETS, NAMELY RUE DU CANOT D'ÉCORCE STREET, VOIE HYACINTIN WAY, COURS DU LÉVRIER WALK AND TERRASSE DE TADOUSSAC TERRACE.

- HAVE BEEN LAID OUT IN ACCORDANCE WITH OUR INSTRUCTIONS.
- THE STREETS ARE DEDICATED TO CITY OF OTTAWA AS PUBLIC HIGHWAYS.

DATE _____ CHRIS TAGGART
PRESIDENT
TAMARACK (CARDINAL CREEK) CORPORATION
I HAVE THE AUTHORITY TO BIND THE CORPORATION

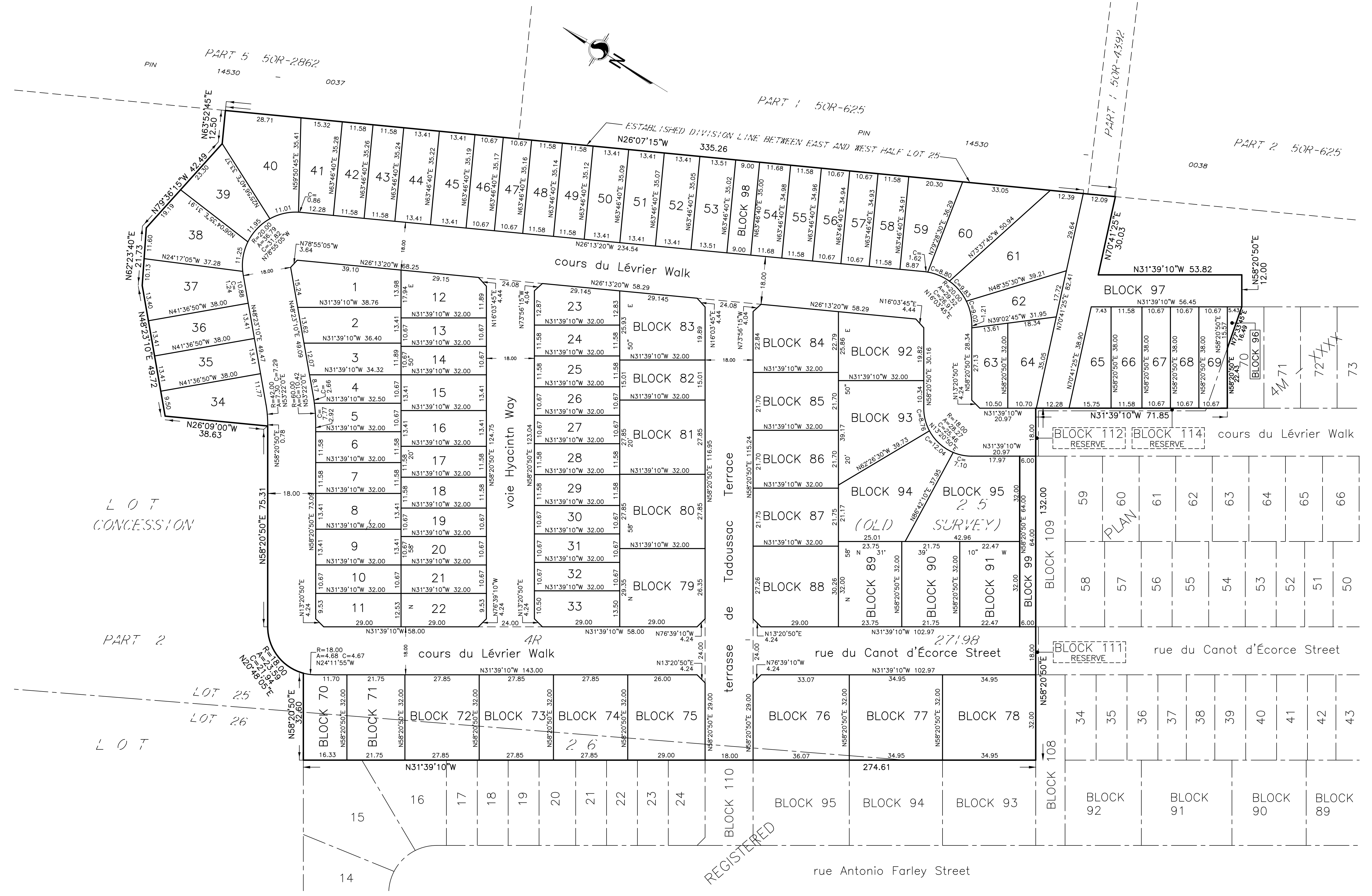
SURVEYOR'S CERTIFICATE

I CERTIFY THAT:
1. THIS SURVEY AND PLAN ARE CORRECT AND IN ACCORDANCE WITH THE SURVEYS ACT, THE SURVEYORS ACT AND THE LAND TITLES ACT AND THE REGULATIONS MADE UNDER THEM.
2. THE SURVEY WAS COMPLETED ON THE _____ DAY OF _____, 2022

DATE _____ FRANCIS LAU
ONTARIO LAND SURVEYOR

Stantec Geomatics Ltd.
CANADA LAND SURVEYORS
ONTARIO LAND SURVEYORS
1331 CLYDE AVENUE, SUITE 400
OTTAWA, ONTARIO K2C 3G4
TEL. 613.722.4420 FAX. 613.722.2799
stantec.com

DRAWN: ME CHECKED: * P.M. FL FIELD: * PROJECT No.: 161614509-132



REGISTERED

LOT CONCESSION

PART 2

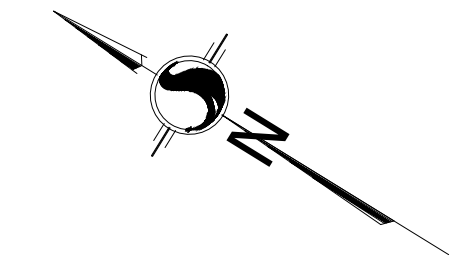
LOT 25
LOT 26

LOT

PART 5 50R-2862

PART 1 50R-625

PART 2 50R-625



ESTABLISHED DIVISION LINE BETWEEN EAST AND WEST HALF LOT 25