



202 950 GLADSTONE AVENUE
OTTAWA, ON K1Y 3E6

T 613 233 8579
F 613 233 4051

W LashleyLA.com
E Mail@LashleyLA.com

TREE CONSERVATION REPORT

PROJECT NAME:	Scouts Canada
PROJECT NO.	22831-1
LOCATION	1345 Baseline Rd, Ottawa ON, K4B 1P6
DATE:	June 1 st 2022

Refer to attached drawings and aerials for further details (L-TP1 and L-TP2)

1.0 SITE INFORMATION (AREA TO BE DEVELOPED)

SIZE OF DEVELOPMENT AREA (HECTARES)	NUMBER OF TREES ON SITE	NUMBER OF TREES TO BE REMOVED	NUMBER OF TREES TO BE RETAINED	NUMBER OF TREES TO BE RETAINED AND PROTECTED (OUTSIDE OF PROPERTY LINE)
1.31	42	42	0	5

2.0 TREE INVENTORY WITHIN PROPERTY LINE

TREE NO.	TREE SPECIES	SIZE (DBH)	CONDITION AND HEALTH (GOOD, FAIR, POOR, OR DEAD)
1	Little Leaf Linden/ <i>Tilia cordata</i>	9	Poor, stressed
2	Little Leaf Linden/ <i>Tilia cordata</i>	17	Good
3	Little Leaf Linden/ <i>Tilia cordata</i>	17	Good
4	Little Leaf Linden/ <i>Tilia cordata</i>	15	Good
5	Little Leaf Linden/ <i>Tilia cordata</i>	13	Poor, wound in trunk, stressed
6	Little Leaf Linden/ <i>Tilia cordata</i>	14	Fair, stressed, east lean



7	Little Leaf Linden/ <i>Tilia cordata</i>	25	Good
8	Little Leaf Linden/ <i>Tilia cordata</i>	16	Good
9	Little Leaf Linden/ <i>Tilia cordata</i>	14	Good
10	Little Leaf Linden/ <i>Tilia cordata</i>	14	Good
11	Colorado Blue Spruce/ <i>Picea pungens glauca</i>	53	Good
12	Colorado Blue Spruce/ <i>Picea pungens glauca</i>	44	Good
13	Black Spruce/ <i>Picea mariana</i>	13,18	Poor, 50% dead
14	White Spruce/ <i>Picea glauca</i>	35	Good
15	White Spruce/ <i>Picea glauca</i>	26	Good
16	White Spruce/ <i>Picea glauca</i>	16	Fair, stressed
17	Crab Apple/ <i>Malus spp.</i>	51	Good
18	Crab Apple/ <i>Malus spp.</i>	16,17,18, 18, 22	Good
19	Crab Apple/ <i>Malus spp.</i>	23,28	Good
20	Silver Maple/ <i>Acer saccharum</i>	25,27,30	Good
21	Silver Maple/ <i>Acer saccharum</i>	16,17	Fair, crowded out by adjacent tree
22	Silver Maple/ <i>Acer saccharum</i>	29,30 ,40	Good
23	Silver Maple/ <i>Acer saccharum</i>	18,22	Fair, crowded out by adjacent tree, weak stem
24	Silver Maple/ <i>Acer saccharum</i>	16,18	Dead
25	Silver Maple/ <i>Acer saccharum</i>	18	Poor, 50% dead
26	Silver Maple/ <i>Acer saccharum</i>	13,16,16, 18	Poor, 50% dead, dead stem



27	Silver Maple/ <i>Acer saccharum</i>	19,26	Fair, dead Limbs
28	Silver Maple/ <i>Acer saccharum</i>	25,27	Fair, weak stem
29	Silver Maple/ <i>Acer saccharum</i>	6,10,13, 13, 20	Fair, abnormal trunk joints
30	Silver Maple/ <i>Acer saccharum</i>	20,21	Good
31	Silver Maple/ <i>Acer saccharum</i>	15,17	Poor, dead limbs
32	Silver Maple/ <i>Acer saccharum</i>	26,27,29	Good
33	Silver Maple/ <i>Acer saccharum</i>	12,15,21, 27	Fair, weak base
34	Silver Maple/ <i>Acer saccharum</i>	12,15,27, 31	Fair, dead limbs
35	Silver Maple/ <i>Acer saccharum</i>	28,35,49	Good
36	White Spruce/ <i>Picea glauca</i>	26	Good
37	White Spruce/ <i>Picea glauca</i>	22	Good
38	White Spruce/ <i>Picea glauca</i>	16,18	Good
39	White Spruce/ <i>Picea glauca</i>	25	Good
40	Colorado Blue Spruce/ <i>Picea pungens glauca</i>	22	Good
41	White Pine/ <i>Pinus strobus</i>	6,10	Good
42	Colorado Blue Spruce/ <i>Picea pungens glauca</i>	25	Good

3.0 TREE INVENTORY OF ADJACENT PROPERTY

TREE NO.	TREE SPECIES	SIZE (DBH)	CONDITION AND HEALTH (GOOD, FAIR, POOR, OR DEAD)
----------	--------------	------------	--



43	Balsam poplar/ <i>Populus balsamifera</i>	15,17,19	Good
44	Hackberry/ <i>Celtis occidentalis</i>	12	Good
45	Siberian Elm / <i>Ulmus pumila</i>	16,17,17, 20	Fair, stressed, leaf loss
46	Red Maple / <i>Acer rubrum</i>	10	Good
47	Red Maple / <i>Acer rubrum</i>	10	Good

4.0 ENVIRONMENTAL VALUE AND ECOLOGICAL FUNCTION

TREE NO.	VALUE SCALE 1-10 (1 POOR-10 HEALTHY)	WOODLOT SIGNIFICANCE	SIGNIFICANCE AS A PART OF A GREENSPACE LINKAGE	CONDITION AND HEALTH (GOOD, FAIR, POOR, OR DEAD)	DISTINCT TREES WITHIN PROPERTY BOUNDARY
1-47	7 - Relatively Healthy	None	None	Fair-Good	Y

5.0 TREE REMOVAL RATIONALE

TREE NO.	RATIONALE (Describe rationale for tree removal, how it will effect existing systems, surrounding landscape, etc.)
1-42	Tree locations conflict with, proposed grading, retaining walls, building footings, mechanical & electrical servicing.

6.0 TREE RETENTION RATIONALE AND MITIGATION MEASURES



TREE NO.	RATIONALE AND MITIGATION DESCRIPTION <i>(Describe rationale for tree retention, impact of development for remaining trees, grade changes, drainage pattern changes, effects of impervious surfaces and new buildings, changes to the water table, long-term survival promotion, etc.)</i>
43-47	Trees exist on adjacent property near the property lines. Trees to be protected by tree preservation fencing to City standards.

7.0 TREE PROTECTION MEASURES

TREE NO.	RATIONALE AND MITIGATION DESCRIPTION <i>(Describe rationale for tree retention, impact of development for remaining trees, grade changes, drainage pattern changes, effects of impervious surfaces and new buildings, changes to the water table, long-term survival promotion, etc.)</i>
1	Erect a fence at the critical root zone*(CRZ) of all trees to be protected shown on the attached plans L-TP1 and L-TP2.
2	Do not place any material or equipment within the CRZ of the tree.
3	Do not attach any signs, notices, or posters to any tree.
4	Do not raise or lower the existing grade within the CRZ of a tree without direction and approval of the landscape architect. Landscape Architect to provide specification of grade changes.
5	Do not damage the root system, trunk or branches of any tree.
6	Ensure that exhaust fumes from all equipment are NOT directed towards the canopy of any tree.

* D = diameter of trunk in centimeters
D x 10cm = Critical Root Zone

The critical root zone is established as being 10 centimetres from the trunk of a tree for every centimetre of trunk diameter. The trunk diameter is measured at a height of 1.2 metres for trees of 15 centimetres diameter and greater and at a height of 0.3 metres for trees of less than 15 centimetres diameter.

8.0 SUGGESTED TREES FOR LANDSCAPE PLAN



1 JUNE 2022
 22831-1
 1345 Baseline Rd

NO. OF PROPOSED TREES	SUGGESTED TREE SPECIES	PERCENT OF TREE OFFSET TO THE SITE (%)
46	Colorado Blue Spruce, Little Leaf Linden, Ornamental Crab Apple, American Hornbeam, Ginkgo	110%

9.0 ADDITIONAL INFORMATION

OWNER NAME	Scouts Canada
ADDRESS	1345 Baseline Road Ottawa, ON, Canada K2C 0A7
TEL. NO.	613-224-5134

APPLICANT NAME	Lashley + Associates Corporation
ADDRESS	950 Gladstone Avenue, Ottawa, Ontario, K1Y 3E6
TEL. NO.	613-233-8579

PROFESSIONAL NAME	Ryan Paliga, OALA , ISA 1664-A
ADDRESS	950 Gladstone Avenue, Ottawa, Ontario, K1Y 3E6
TEL. NO.	613-233-8579; 110

CONTRACTOR NAME	TBA
ADDRESS	TBA
TEL. NO.	TBA



MUNICIPAL ADDRESS	1345 Baseline Road Ottawa, ON, Canada K2C 0A7
LEGAL DESCRIPTION (LOT, BLOCK, PLAN)	
CONFIRMATION OF EXISTING OFFICIAL PLAN	
CONFIRMATION OF ZONING DESIGNATIONS	
PREVIOUS STATUS OF APPLICATION	N/A
PURPOSE OF REPORT	To indicate all trees being removed from site, and to propose replacements
10.0 SCHEDULE OF PROPOSED WORKS	
START DATE	N/A
SUBSTANTIAL COMPLETION	N/A

SCOUTS CANADA

1345 BASELINE RD

OTTAWA, ONTARIO

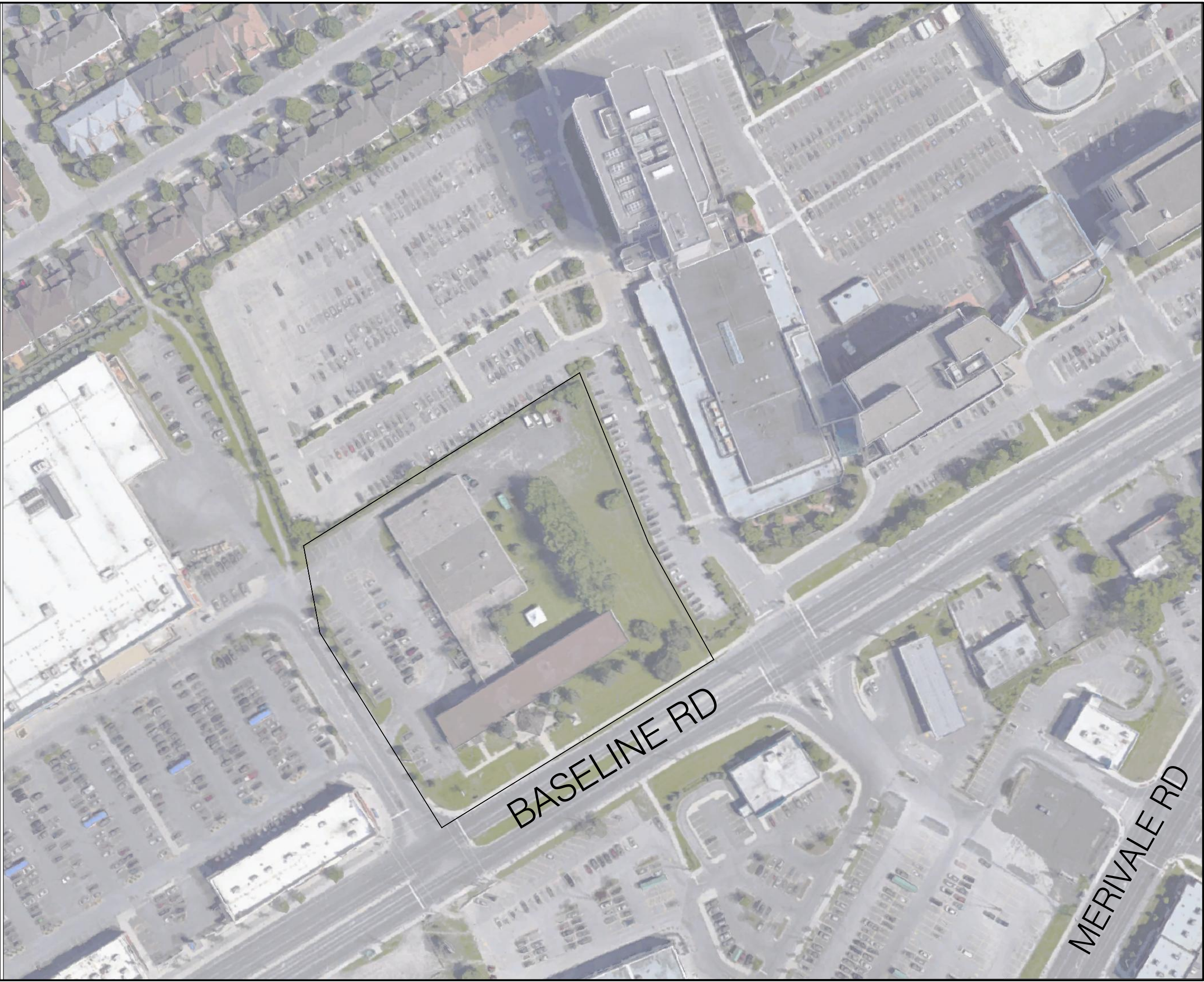
JUNE 2022

DRAWING INDEX

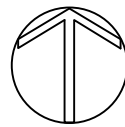
PRE DEVELOPMENT VEGETATION L-TP1

POST DEVELOPMENT VEGETATION L-TP2

LANDSCAPE PLAN L1-01



KEY PLAN





LEGEND:

- PROPERTY LINE
- EXISTING DECIDUOUS TREE
- EXISTING CONIFEROUS TREE



KEY MAP, NTS

- GENERAL NOTES**
- All general site information and conditions compiled from architect's and engineer's plans and surveys.
 - Do not scale this drawing.
 - Report any discrepancies prior to commencing work. No responsibility is born by the Landscape Architect for unknown subsurface conditions.
 - Reinstatae all areas and items damaged as a result of construction activities to the satisfaction of the Landscape Architect.
 - Drawing may not be used for construction until signed by Landscape Architect as issued for construction.
 - The accuracy of the position of utilities is not guaranteed.
 - Individual utility co. must be contacted for confirmation of utility existence and location prior to digging.
 - This drawing is an instrument of service and requires the signature of the Landscape Architect for use. Copyright © N.T.S. is reserved by the Landscape Architect, David M. Lashley.

SCOUTS CANADA SITE-EXISTING TREES

NO.	TREE SPECIES	DBH (cm)	CONDITION	COMMENTS
1	Little Leaf Linden/ <i>Tilia cordata</i>	9	Poor	Stressed
2	Little Leaf Linden/ <i>Tilia cordata</i>	17	Good	
3	Little Leaf Linden/ <i>Tilia cordata</i>	17	Good	
4	Little Leaf Linden/ <i>Tilia cordata</i>	15	Good	
5	Little Leaf Linden/ <i>Tilia cordata</i>	13	Poor	Wound in trunk, stressed
6	Little Leaf Linden/ <i>Tilia cordata</i>	14	Fair	Stressed, east lean
7	Little Leaf Linden/ <i>Tilia cordata</i>	15	Good	
8	Little Leaf Linden/ <i>Tilia cordata</i>	16	Good	
9	Little Leaf Linden/ <i>Tilia cordata</i>	14	Good	
10	Little Leaf Linden/ <i>Tilia cordata</i>	14	Good	
11	Colorado Blue Spruce/ <i>Picea pungens</i>	53	Good	
12	Colorado Blue Spruce/ <i>Picea pungens</i>	44	Good	
13	Black Spruce/ <i>Picea mariana</i>	18, 13	Poor	50% dead
14	White Spruce/ <i>Picea glauca</i>	35	Good	
15	White Spruce/ <i>Picea glauca</i>	26	Good	
16	White Spruce/ <i>Picea glauca</i>	16	Fair	Stressed
17	Crab Apple/ <i>Malus sylvestris</i>	51	Good	
18	Crab Apple/ <i>Malus sylvestris</i>	18,22,18,17,16	Good	
19	Crab Apple/ <i>Malus sylvestris</i>	23,28	Good	
20	Silver Maple/ <i>Acer saccharium</i>	27,30,25	Good	
21	Silver Maple/ <i>Acer saccharium</i>	16,17	Fair	Crowded out
22	Silver Maple/ <i>Acer saccharium</i>	30,29,40	Good	
23	Silver Maple/ <i>Acer saccharium</i>	22,18	Fair	Crowded out, weak stem
24	Silver Maple/ <i>Acer saccharium</i>	18,16	Dead	
25	Silver Maple/ <i>Acer saccharium</i>	18	Poor	50% dead
26	Silver Maple/ <i>Acer saccharium</i>	18,16,16,13	Poor	50% dead, dry stem
27	Silver Maple/ <i>Acer saccharium</i>	26,19	Fair	Dead limbs
28	Silver Maple/ <i>Acer saccharium</i>	25,27	Fair	Weak stem
29	Silver Maple/ <i>Acer saccharium</i>	20,6,10,13,13	Fair	Abnormal trunk joints
30	Silver Maple/ <i>Acer saccharium</i>	20,21	Good	
31	Silver Maple/ <i>Acer saccharium</i>	15,17	Poor	Dead limbs
32	Silver Maple/ <i>Acer saccharium</i>	27,26,29	Good	
33	Silver Maple/ <i>Acer saccharium</i>	15,12,21,27	Fair	Weak base
34	Silver Maple/ <i>Acer saccharium</i>	12,15,27,31	Fair	Dead limbs
35	Silver Maple/ <i>Acer saccharium</i>	28,35,49	Good	
36	White Spruce/ <i>Picea glauca</i>	26	Good	
37	White Spruce/ <i>Picea glauca</i>	22	Good	
38	White Spruce/ <i>Picea glauca</i>	16,18	Good	
39	White Spruce/ <i>Picea glauca</i>	25	Good	
40	Colorado Blue Spruce/ <i>Picea pungens</i>	22	Good	
41	White Pine/ <i>Pinus strobus</i>	6,10	Good	
42	Colorado Blue Spruce/ <i>Picea pungens</i>	25	Good	
43	Balsam poplar/ <i>Populus balsamifera</i>	15,17,19	Good	
44	Hackberry/ <i>Celtis occidentalis</i>	12	Good	
45	Siberian Elm/ <i>Ulmus pumila</i>	16,17,17,20	Fair	Stressed, leaf loss
46	Red Maple/ <i>Acer rubrum</i>	10	Good	
47	Red Maple/ <i>Acer rubrum</i>	10	Good	

NO.	DATE	DESCRIPTION
1		

SEAL: _____

NORTH:

CONSULTANT:

PROJECT:

SCOUTS CANADA LAND

1345 BASELINE RD, OTTAWA, ON

DRAWING TITLE:

PRE DEVELOPMENT VEGETATION

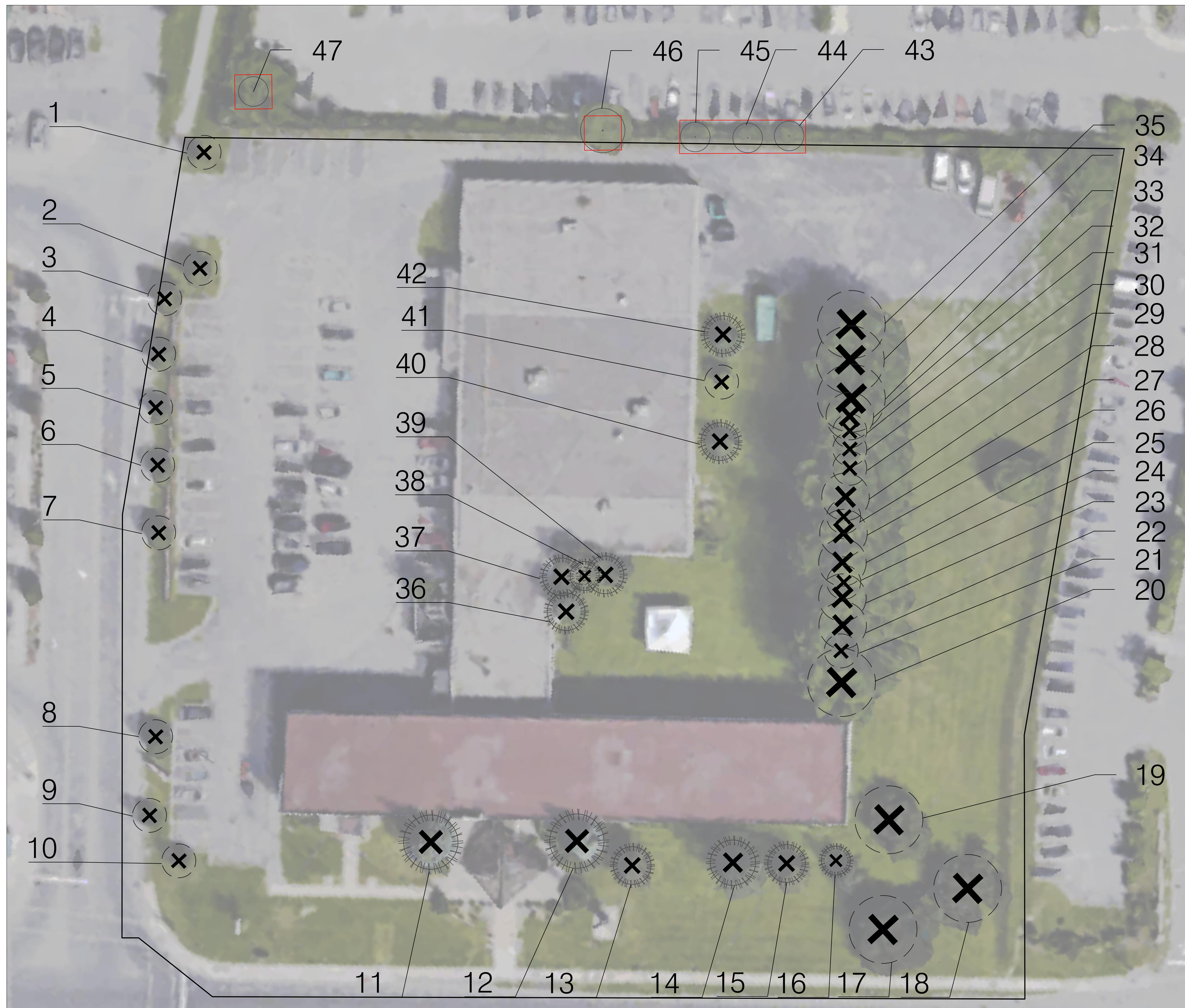
DATE: 2022-06-01 **DRAWING NO.:**

SCALE: AS SHOWN

DRAWN BY: CR **L-TP1**

LA PROJECT NO.: 22831-1

1 PRE DEVELOPMENT VEGETATION



1 POST DEVELOPMENT VEGETATION
L-TP2

LEGEND:

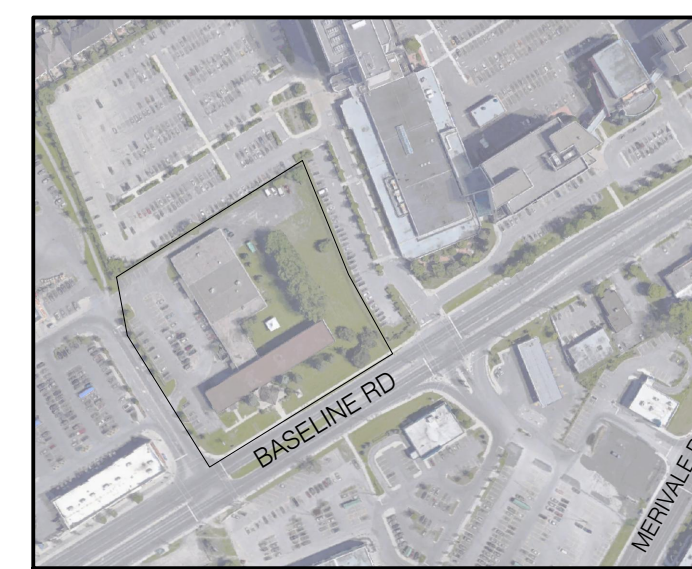
- PROPERTY LINE
- TREE PRESERVATION FENCING
- EXISTING CONIFEROUS TREE TO BE REMOVED
- EXISTING DECIDUOUS TREE TO BE REMOVED
- EXISTING TREE TO REMAIN

SCOUTS CANADA SITE- TREES TO BE RETAINED

NO.	TREE SPECIES	DBH (cm)	CONDITION	COMMENTS
43	Balsam poplar/ <i>Populus balsamifera</i>	15,17,19	Good	
44	Hackberry/ <i>Celtis occidentalis</i>	12	Good	
45	Siberian Elm/ <i>Ulmus pumila</i>	16,17,17,20	Fair	Stressed, leaf loss
46	Red Maple/ <i>Acer rubrum</i>	10	Good	
47	Red Maple/ <i>Acer rubrum</i>	10	Good	

SCOUTS CANADA SITE- TREES TO BE REMOVED

NO.	TREE SPECIES	DBH (cm)	CONDITION	COMMENTS
1	Little Leaf Linden/ <i>Tilia cordata</i>	9	Poor	Stressed
2	Little Leaf Linden/ <i>Tilia cordata</i>	17	Good	
3	Little Leaf Linden/ <i>Tilia cordata</i>	17	Good	
4	Little Leaf Linden/ <i>Tilia cordata</i>	15	Good	
5	Little Leaf Linden/ <i>Tilia cordata</i>	13	Poor	Wound in trunk, stressed
6	Little Leaf Linden/ <i>Tilia cordata</i>	14	Fair	Stressed, east lean
7	Little Leaf Linden/ <i>Tilia cordata</i>	15	Good	
8	Little Leaf Linden/ <i>Tilia cordata</i>	16	Good	
9	Little Leaf Linden/ <i>Tilia cordata</i>	14	Good	
10	Little Leaf Linden/ <i>Tilia cordata</i>	14	Good	
11	Colorado Blue Spruce/ <i>Picea pungens</i>	53	Good	
12	Colorado Blue Spruce/ <i>Picea pungens</i>	44	Good	
13	Black Spruce/ <i>Picea mariana</i>	18, 13	Poor	50% dead
14	White Spruce/ <i>Picea glauca</i>	35	Good	
15	White Spruce/ <i>Picea glauca</i>	26	Good	
16	White Spruce/ <i>Picea glauca</i>	16	Fair	Stressed
17	Crab Apple/ <i>Malus sylvestris</i>	51	Good	
18	Crab Apple/ <i>Malus sylvestris</i>	18,22,18,17,16	Good	
19	Crab Apple/ <i>Malus sylvestris</i>	23,28	Good	
20	Silver Maple/ <i>Acer saccharium</i>	27,30,25	Good	
21	Silver Maple/ <i>Acer saccharium</i>	16,17	Fair	Crowded out
22	Silver Maple/ <i>Acer saccharium</i>	30,29,40	Good	
23	Silver Maple/ <i>Acer saccharium</i>	22,18	Fair	Crowded out, weak stem
24	Silver Maple/ <i>Acer saccharium</i>	18,16	Dead	
25	Silver Maple/ <i>Acer saccharium</i>	18	Poor	50% dead
26	Silver Maple/ <i>Acer saccharium</i>	18,16,16,13	Poor	50% dead, dead stem
27	Silver Maple/ <i>Acer saccharium</i>	26,19	Fair	Dead limbs
28	Silver Maple/ <i>Acer saccharium</i>	25,27	Fair	Weak stem
29	Silver Maple/ <i>Acer saccharium</i>	20,6,10,13,13	Fair	Abnormal trunk joints
30	Silver Maple/ <i>Acer saccharium</i>	20,21	Good	
31	Silver Maple/ <i>Acer saccharium</i>	15,17	Poor	Dead limbs
32	Silver Maple/ <i>Acer saccharium</i>	27,26,29	Good	
33	Silver Maple/ <i>Acer saccharium</i>	15,12,21,27	Fair	Weak base
34	Silver Maple/ <i>Acer saccharium</i>	12,15,27,31	Fair	Dead limbs
35	Silver Maple/ <i>Acer saccharium</i>	28,35,49	Good	
36	White Spruce/ <i>Picea glauca</i>	26	Good	
37	White Spruce/ <i>Picea glauca</i>	22	Good	
38	White Spruce/ <i>Picea glauca</i>	16,18	Good	
39	White Spruce/ <i>Picea glauca</i>	25	Good	
40	Colorado Blue Spruce/ <i>Picea pungens</i>	22	Good	
41	White Pine/ <i>Pinus strobus</i>	6,10	Good	
42	Colorado Blue Spruce/ <i>Picea pungens</i>	25	Good	



KEY MAP, NTS

- GENERAL NOTES**
- All general site information and conditions compiled from architect's and engineer's plans and surveys.
 - Do not scale this drawing.
 - Report any discrepancies prior to commencing work. No responsibility is born by the Landscape Architect for unknown subsurface conditions.
 - Reinststate all areas and items damaged as a result of construction activities to the satisfaction of the Landscape Architect.
 - Drawing may not be used for construction until signed by Landscape Architect as issued for construction.
 - The accuracy of the position of utilities is not guaranteed.
 - Individual utility co. must be contacted for confirmation of utility existence and location prior to digging.
 - This drawing is an instrument of service and requires the signature of the Landscape Architect for use. Copyright N.T.S. is reserved by the Landscape Architect, David M. Lashley.

NO.	DATE	DESCRIPTION
1		

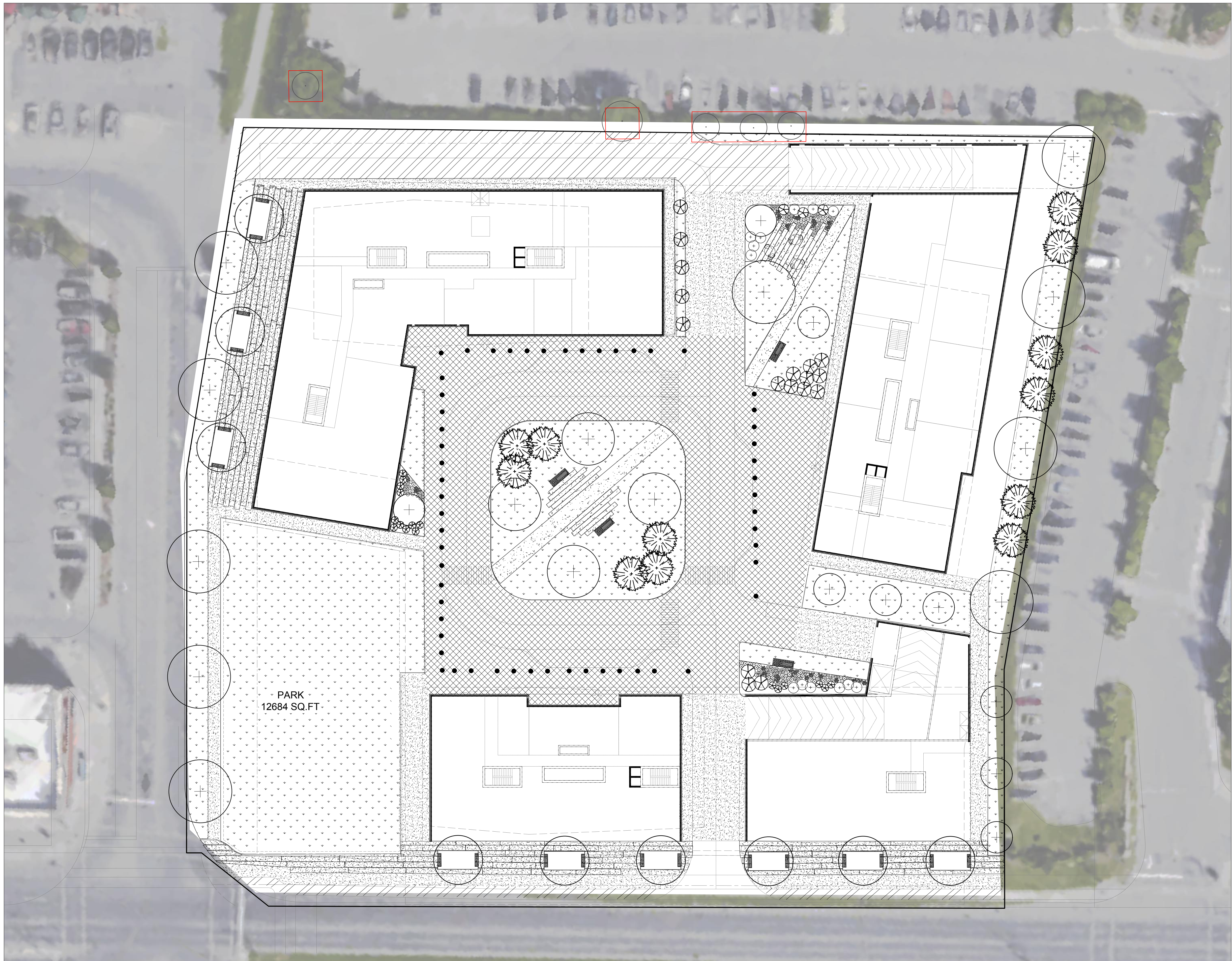
SEAL: _____ NORTH:

CONSULTANT:

PROJECT: **SCOUTS CANADA LAND**
1345 BASELINE RD, OTTAWA, ON

DRAWING TITLE: **POST DEVELOPMENT VEGETATION**

DATE: 2022-06-01 DRAWING NO.: _____
SCALE: AS SHOWN
DRAWN BY: CR
LA PROJECT NO. 22831-1 **L-TP2**



LEGEND

- PROPERTY LINE
- PROPOSED SOD
- PROPOSED PAVERS
- PROPOSED CONCRETE
- PROPOSED ASPHALT
- PROPOSED CONCRETE PAVERS
- EXISTING TREES TO REMAIN
- TREE PRESERVATION FENCING
- PROPOSED DECIDUOUS TREES
- PROPOSED CONIFEROUS TREES
- PROPOSED DECIDUOUS SHRUBS
- PROPOSED CONIFEROUS SHRUBS
- PROPOSED PERENNIALS
- PROPOSED PLANTER BENCHES
- PROPOSED BENCHES
- PROPOSED BOLLARDS
- PROPOSED CAFE TABLES/CHAIRS



- GENERAL NOTES**
1. All general site information and conditions compiled from architect's and engineer's plans and surveys.
 2. Do not scale this drawing.
 3. Report any discrepancies prior to commencing work. No responsibility is born by the Landscape Architect for unknown subsurface conditions.
 4. Reinstatement all areas and items damaged as a result of construction activities to the satisfaction of the Landscape Architect.
 5. Drawing may not be used for construction until signed by Landscape Architect as issued for construction.
 6. The accuracy of the position of utilities is not guaranteed.
 7. Individual utility co. must be contacted for confirmation of utility existence and location prior to digging.
 8. This drawing is an instrument of service and requires the KEY SIGNATURE of the Landscape Architect for use. Copyright N.T.S. is reserved by the Landscape Architect, David M. Lashley.

1		
---	--	--

NO.	DATE	DESCRIPTION

SEAL:

NORTH:

CONSULTANT:

PROJECT:

SCOUTS CANADA LAND

1345 BASELINE RD, OTTAWA, ON
/tmp/ASCb505cc5c.DWG

DRAWING TITLE:

LANDSCAPE PLAN

DATE: 2022-05	DRAWING NO.:
SCALE: AS SHOWN	L1-01
DRAWN BY: CR	
LA PROJECT NO.: 22831-1	