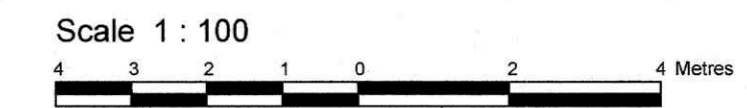


SURVEYOR'S REAL PROPERTY REPORT
PART OF LOT 1335
REGISTERED PLAN 157
CITY OF OTTAWA
 Surveyed by Annis, O'Sullivan, Vollebakk Ltd.



Metric
 DISTANCES SHOWN ON THIS PLAN ARE IN METRES AND
 CAN BE CONVERTED TO FEET BY DIVIDING BY 0.3048

Surveyor's Certificate

I CERTIFY THAT:
 1. This survey and plan are correct and in accordance with the Surveys Act and the Surveyors Act and the regulations made under them.
 2. The survey was completed on the 8th day of July, 2021.

[Signature]
 Date: July 8, 2021
 T. Hartwick
 Ontario Land Surveyor

PART 2
 THIS PLAN MUST BE READ IN CONJUNCTION WITH
 SURVEY REPORT DATED: March 6, 2020.

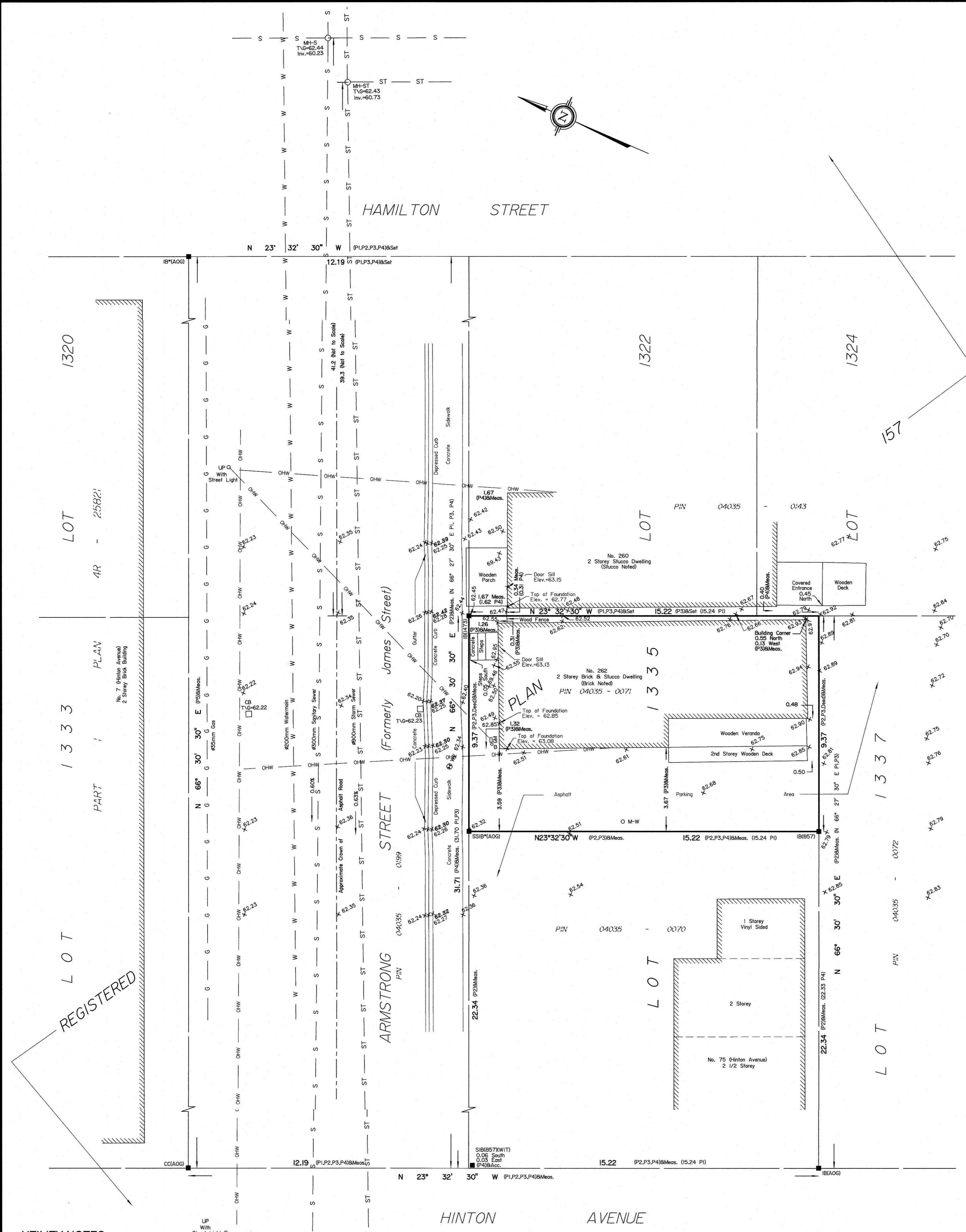
ANNIS, O'SULLIVAN, VOLLEBEKK LTD. grants to
 Lance Lunetta & Lisa Fudge Lunetta, ("The Client"), their solicitors,
 mortgages, and other related parties, permission to use original, signed, sealed
 copies of the Surveyor's Real Property Report in transactions involving The Client.

Notes & Legend

Denotes	
□	Survey Monument Planted
■	Survey Monument Found
SIB	Standard Iron Bar
SSIB	Short Standard Iron Bar
IB	Iron Bar
CC	Cut Cross
*	Survey Monument 0.3 Long
(WIT)	Witness
Meas.	Measured
(AOG)	Annis, O'Sullivan, Vollebakk Ltd.
(P1)	Registered Plan 157
(P2)	(AOG) Plan June 1, 1984
(P3)	(725) Plan November 10, 1986
(P4)	(1473) Plan December 2, 1993
(P5)	Plan 4R-25821
(Deed)	Inst. N364734
○ MH-ST	Maintenance Hole (Storm Sewer)
○ MH-S	Maintenance Hole (Sanitary)
□ CB	Catch Basin
— ST	Underground Storm Sewer
— S	Underground Sanitary Sewer
— W	Underground Water
— G	Underground Gas
— OHW	Overhead Wires
□ GM	Gas Meter
○ B	Bollard
○ UP	Utility Pole
+65.00	Location of Elevations
+65.00	Top of Concrete Curb Elevation
○ M-W	Monitoring Well

Bearings are grid, derived from Can-Net 2016 Real Time Network
 GPS observations, and are referenced to Specified Control Points
 01919680005 and 01919680105, MTM Zone 9 (76°30' West
 Longitude) NAD-83 (original).

For bearing comparisons, a rotation of 0°33'50" counter-clockwise
 was applied to bearings on plan P1, P2, P3, P4.



- UTILITY NOTES**
- This drawing cannot be accepted as acknowledging all of the utilities and it will be the responsibility of the user to contact the respective utility authorities for confirmation.
 - Only visible surface utilities were located.
 - Underground utility data derived from City of Ottawa utility sheet reference E-07-14
 - Sanitary and storm sewer grades and inverts were derived from City of Ottawa plan No. 2292 Sheet 5
 - A field location of underground plant by the pertinent utility authority is mandatory before any work involving breaking ground, probing, excavating etc.

- ELEVATION NOTES**
- Elevations shown are geodetic and are referred to the CGVD28 geodetic datum, derived from vertical control monument No. OIL - 1 having an elevation of 66.334 metres
 - It is the responsibility of the user of this information to verify that the job benchmark has not been altered or disturbed and that its relative elevation and description agrees with the information shown on this drawing.

ASSOCIATION OF ONTARIO
 LAND SURVEYORS
 PLAN SUBMISSION FORM
 2114317

THIS PLAN IS NOT VALID UNLESS
 IT IS AN EMBOSSED ORIGINAL
 COPY ISSUED BY THE SURVEYOR
 In accordance with
 Regulation 1026, Section 29 (3).

© Annis, O'Sullivan, Vollebakk Ltd. 2021. "THIS PLAN IS PROTECTED BY COPYRIGHT"

ANNIS, O'SULLIVAN, VOLLEBEKK LTD.
 14 Concourse Gate, Suite 500
 Nepean, Ont. K2E 7S6
 Phone: (613) 727-0850 / Fax: (613) 727-1079
 Email: info@annis.com

Ontario
 Land Surveyors (Reg. No. 20504-20 P1 L1335 PL157 T D2) CA