

Replacement Tree Specifications

Trees 1 and 2, large trees at maturity, species suggestions:

- Hackberry (*Celtis occidentalis*)*
- Katsura (*Cercidiphyllum japonicum*)
- Black walnut (*Juglans nigra*)* – has nuts
- White oak (*Quercus alba*)*
- Bur oak (*Quercus macrocarpa*)*
- English oak (*Quercus robur*)
- Red oak (*Quercus rubra*)*
- Basswood (*Tilia americana*)*
- Ginkgo (*Ginkgo biloba*)
- Kentucky coffeetree (*Gymnocladus dioica*) – has large pods
- Liberty elm (*Ulmus americana* "Libertas")

Tree 3, large tree at maturity, species suggestions include:

- Eastern larch (*Larix laricina*)*
- White spruce (*Picea glauca*)*
- Norway spruce (*Picea abies*)
- Colorado spruce (*Picea pungens*)
- Eastern white cedar (*Thuja occidentalis*)*

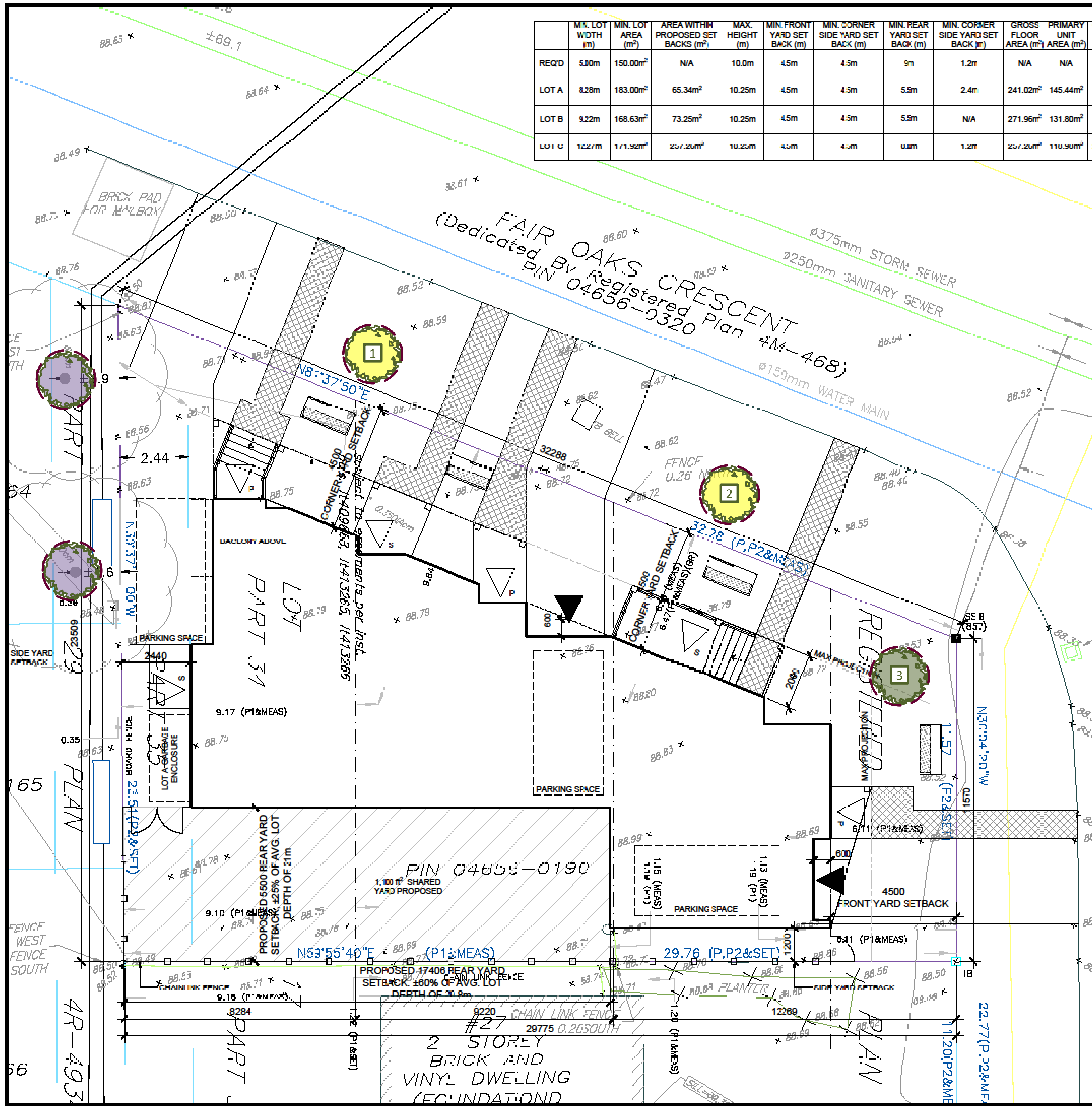
Note: Proposed tree locations are suggestions only and should be finalized only once construction is complete and should adhere to City of Ottawa Tree Planting Guidelines

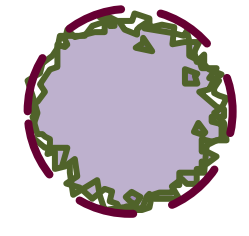
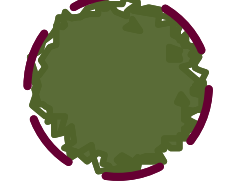
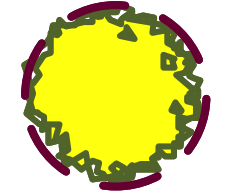
Note: Norway maple (*Acer platanoides*), a commonly planted species in Ottawa and sold at nurseries, is *not* recommended as it is highly invasive and not a suitable tree for urban planting due to its poor growth characteristics (weak unions, girdling roots), susceptibility to disease (e.g. tar spot) and its ability to outcompete other vegetation including grass.

All deciduous trees must be a minimum of 50 mm in diameter measured no less than 15 cm above ground level. Coniferous trees must be no less than 200 cm in height.

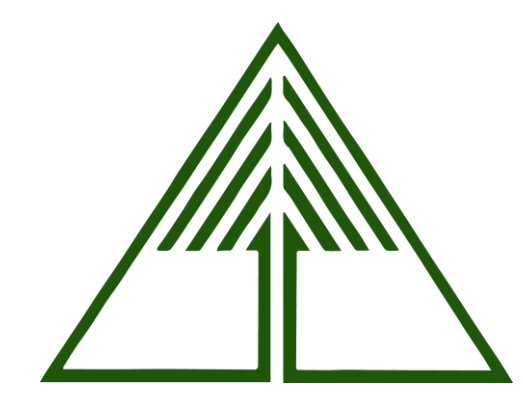
See attached City of Ottawa Tree Planting Specifications for Infill Properties for more details on planting requirements.

	MIN. LOT WIDTH (m)	MIN. LOT AREA (m ²)	AREA WITHIN PROPOSED SET BACKS (m ²)	MAX. HEIGHT (m)	MIN. FRONT YARD SET BACK (m)	MIN. CORNER SIDE YARD SET BACK (m)	MIN. REAR YARD SET BACK (m)	MIN. CORNER SIDE YARD SET BACK (m)	GROSS FLOOR AREA (m ²)	PRIMARY UNIT AREA (m ²)
REQD	5.00m	150.00m ²	N/A	10.0m	4.5m	4.5m	9m	1.2m	N/A	N/A
LOT A	8.28m	183.00m ²	65.34m ²	10.25m	4.5m	4.5m	5.5m	2.4m	241.02m ²	145.44m ²
LOT B	9.22m	168.63m ²	73.25m ²	10.25m	4.5m	4.5m	5.5m	N/A	271.96m ²	131.80m ²
LOT C	12.27m	171.92m ²	257.26m ²	10.25m	4.5m	4.5m	0.0m	1.2m	257.26m ²	118.98m ²



-  Existing tree to be retained
-  New Private Tree
-  New City Tree

Note that the tree layer has been added to the original site plan supplied by the client in pdf format. This layer refers to the trees only, and the original site plan has not been altered in the process. Refer to the original plan for details on quality is lost when importing the plan into the mapping software used to create the tree layer.



Tree Planting Plan – 25 Fair Oaks
 Tree layer prepared by Dendron Forestry Services
 Version 1.0, June 1, 2022
 For more information, please contact info@dendronforestry.ca

DRAWING TITLE			
SITE PLAN			
DATE DEC. 2021	DRAWN IC	JOB NO. 3438	DRAWING NO. A050
SCALE 1:100	REVIEWED TD		
ARCHITECTURAL			