

PART OF LOTS 6, 7, 8, 9, 10, 11 & 12 REGISTERED PLAN 310501 & PART OF LOTS 6, 7, 8 & 9 REGISTERED PLAN 310509 CITY OF OTTAWA

FARLEY, SMITH & DENIS SURVEYING LTD. 2022

Scale 1: 400 0 5 10 15 20 30 40 metres

Metric Note Distances on this plan are in metres and can be converted to feet by dividing by 0.3048.

Distance Note Distances shown on this plan are ground distances and can be converted to grid distances by multiplying by the combined scale factor of 0.99994.

Bearing Note Bearings hereon are grid bearings derived from the Can-Net Real Time Network and are referred to the Central Meridian of NAD 83 (76°30' West Longitude) Nad 83 (Original).

For bearing comparisons, a rotation of 0°32'15" counter-clockwise was applied to bearings on P1, P2, P3, P4, P6 & P7.

Elevation Notes

- 1. Elevations shown are geodetic and are referred to Geodetic Datum CGVD-1928 -1978. (Monument No. 19680092)
2. It is the responsibility of the user of this information to verify that the job benchmark has not been altered or disturbed and that its relative elevation and description agrees with the information shown on this drawing.

Utility Notes

- 1. This drawing cannot be accepted as acknowledging all of the utilities and it will be the responsibility of the user to contact the respective utility authorities for confirmation.
2. Only visible surface utilities were located.
3. Underground utility data derived from City of Ottawa utility sheet references: I-06-04, I-06-05, I-06-07, 833-834-835p&4-03, 6122p&01, 11521p&01 & 12512p&01.
4. Sanitary and storm sewer grades and inverts were compiled from: City of Ottawa Utility Sheets.
5. A field location of underground plant by the pertinent utility authority is mandatory before any work involving breaking ground, probing, excavating etc.

Notes & Legend

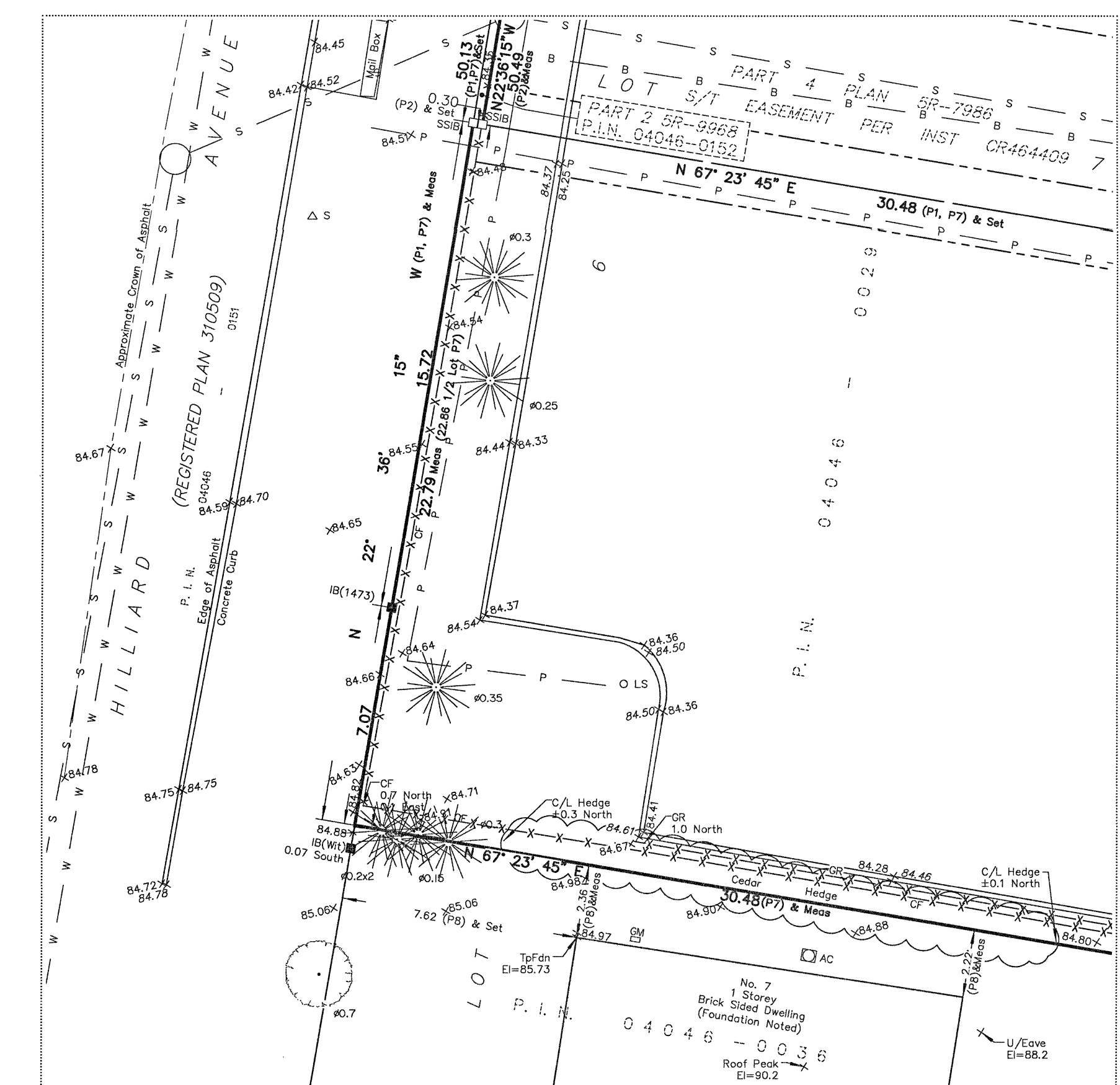
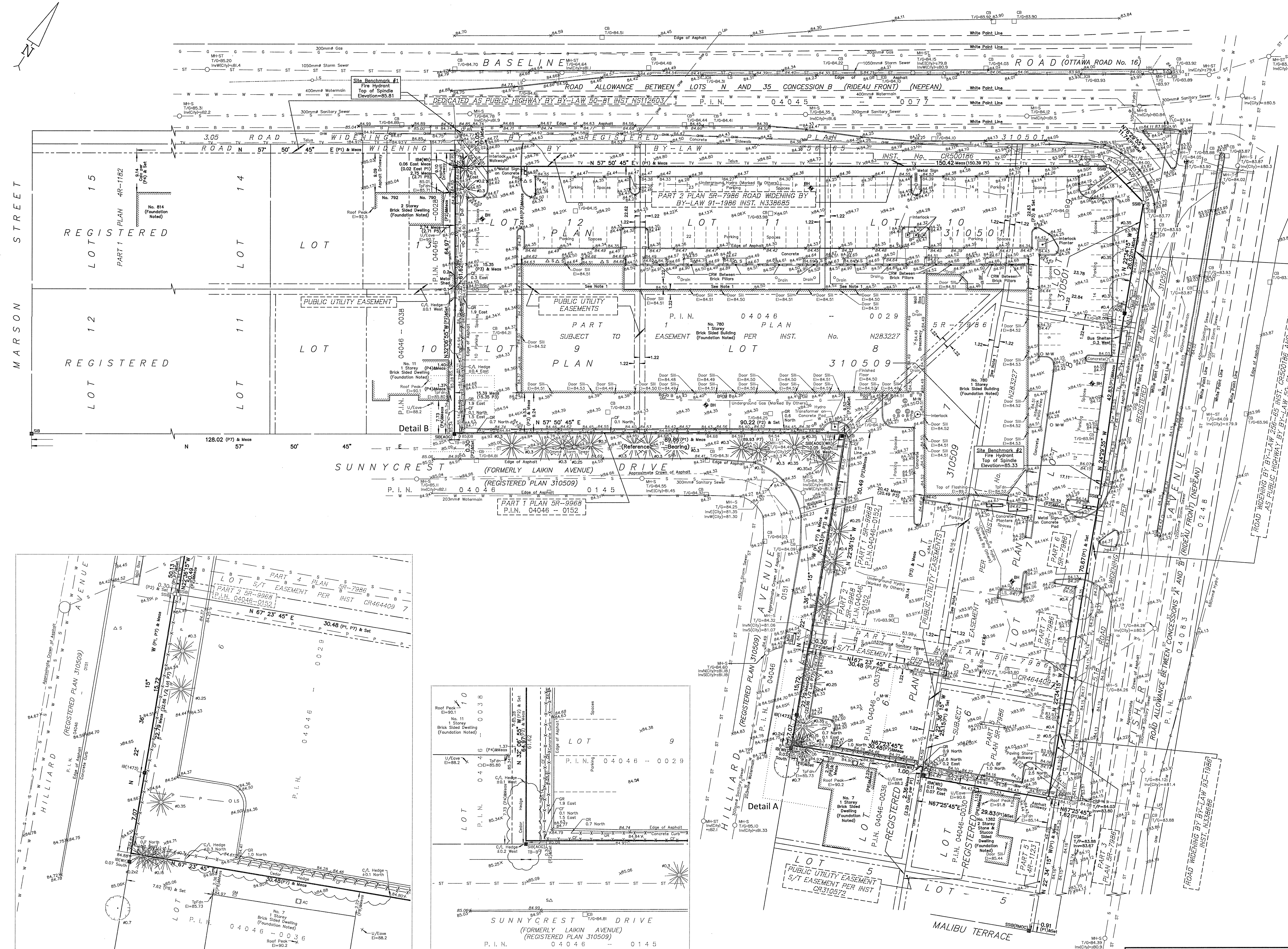
Table with 2 columns: Denotes and Description. Includes symbols for Survey Monument Planted, Standard Iron Bar, Short Standard Iron Bar, Round Iron Bar, Concrete Pin, Witness, Measured, Plan 5R-7986, Plan 5R-9968, Plan by (AOG) dated April 22, 1986, etc.

The Symbol shown denotes location and trunk diameter only. Size of 's' root system/overhead canopy may be smaller/larger than the symbol size depicted on this plan.

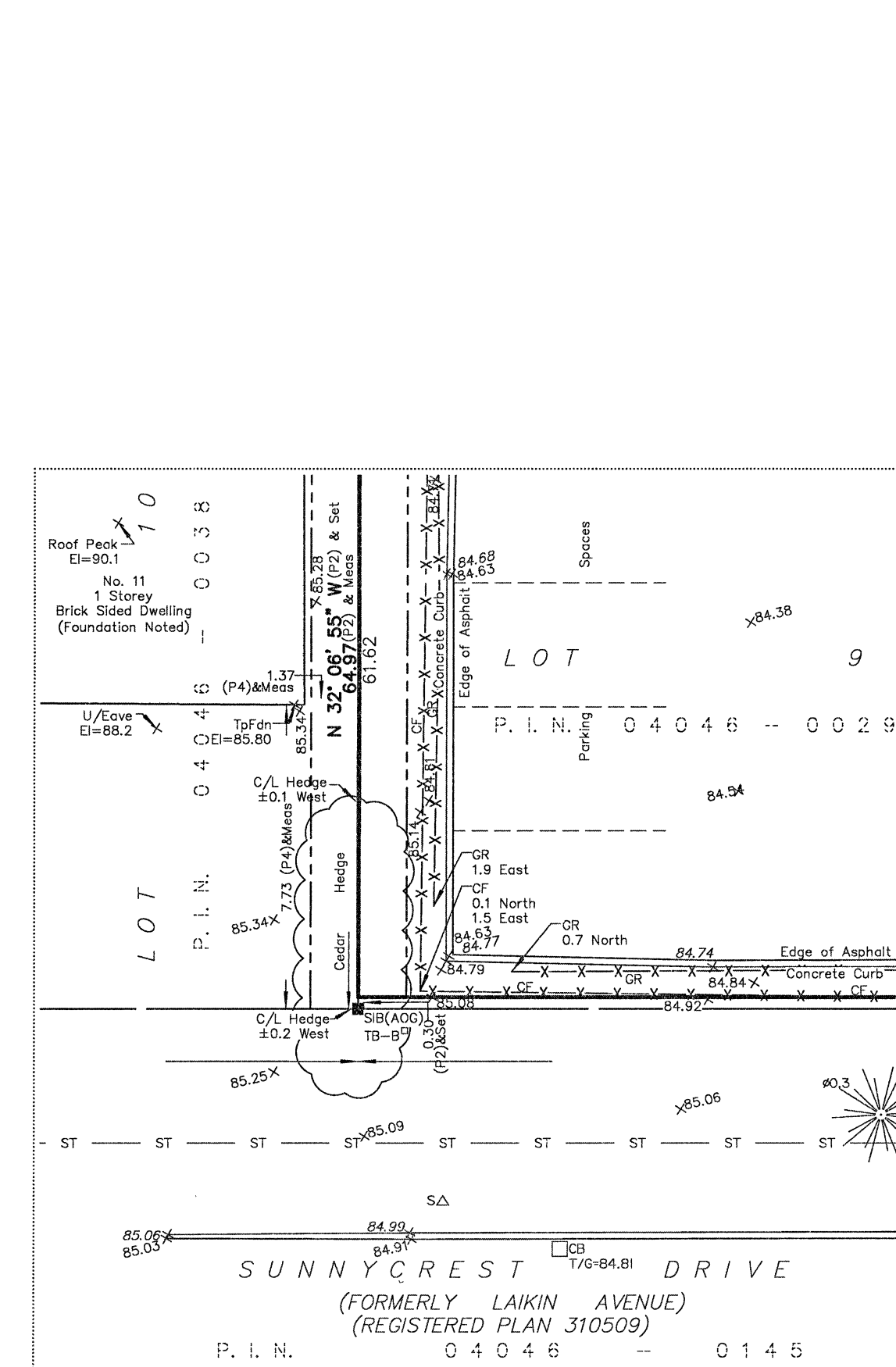
Note 1 Section of "Public Utility Easements" that is subject to easement CR310572.

Surveyor's Certificate section containing a declaration of accuracy, date (April 27/22), and signature of Jamie Leslie, Ontario Land Surveyor.

Farley, Smith & Denis Surveying Ltd. logo and contact information: Unit 275, 30 Colonnade Road, Ottawa, Ontario K2E 7J6. TEL: (613) 727-8226. E-mail: fdsurveys@bellnet.ca



Detail A Scale 1:150



Detail B Scale 1:150

WARNING: NO PERSON MAY COPY, REPRODUCE, DISTRIBUTE OR ALTER THIS PLAN IN WHOLE OR IN PART WITHOUT THE WRITTEN PERMISSION OF FARLEY, SMITH & DENIS SURVEYING LTD. © FARLEY, SMITH & DENIS SURVEYING LTD., 2022. FILE NO.: 70-22