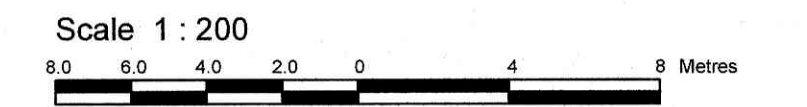
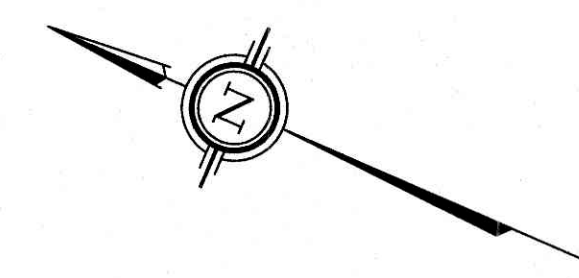


LOT 7 REGISTERED PLAN 127960 CITY OF OTTAWA

Surveyed by Annis, O'Sullivan, Vollebek Ltd.



Metric DISTANCES AND COORDINATES SHOWN ON THIS PLAN ARE IN METRES AND CAN BE CONVERTED TO FEET BY DIVIDING BY 0.3048.

Surveyor's Certificate

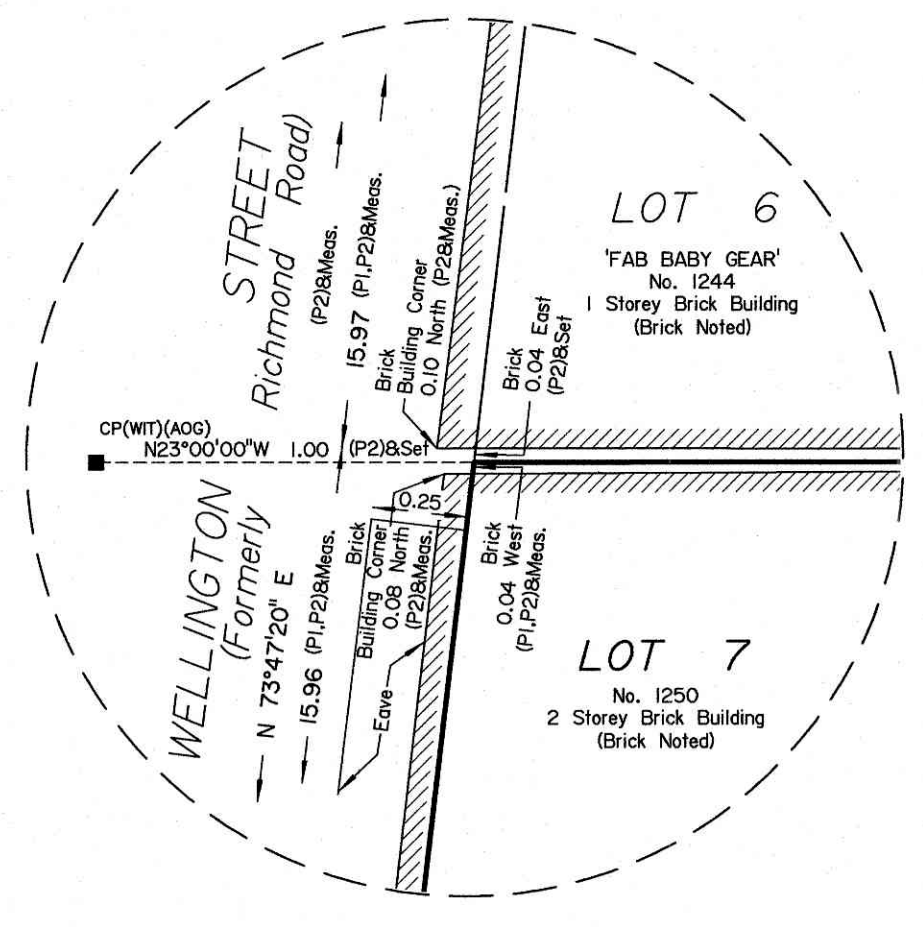
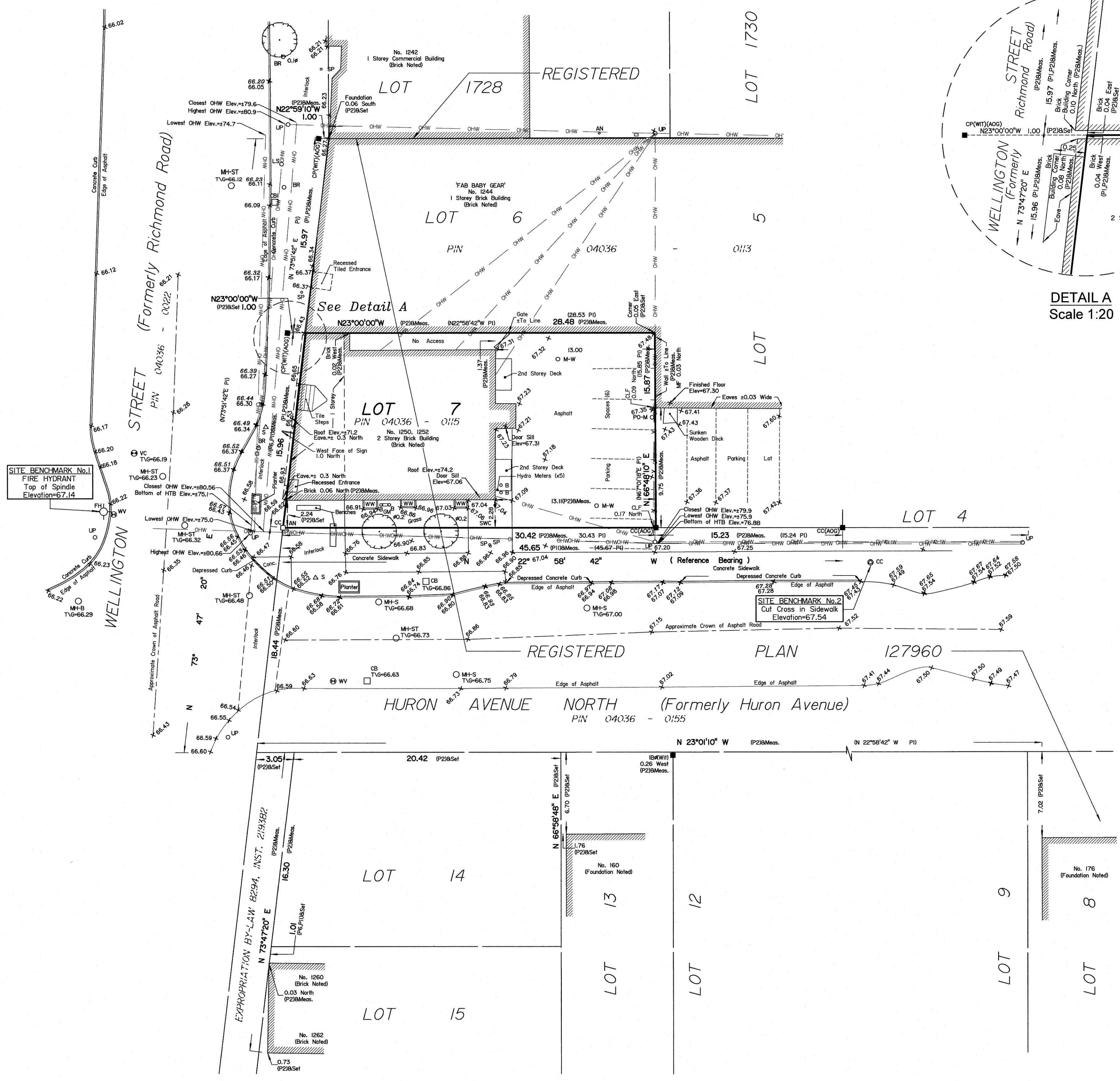
I CERTIFY THAT: 1. This survey and plan are correct and in accordance with the Surveys Act, the Surveyors Act and the regulations made under them. 2. The survey was completed on the 11th day of June, 2021.

Signature and date: 17/21, V. Andrew Sheip, Ontario Land Surveyor.

Notes & Legend

- Legend items: Denotes Survey Monument Planted, SIB Standard Iron Bar, IB Iron Bar, CP Concrete Pin, CC Cut Cross, (Prop) Proportioned, (WIT) Witness, (AOC) Annis, O'Sullivan, Vollebek Ltd., Meas. Measured, (P1) Registered Plan 127960, (P2) (AOG) Plan dated August 3, 2021, (P3) (647) Plan dated August 14, 1956, MH-ST Maintenance Hole (Storm Sewer), MH-S Maintenance Hole (Sanitary), CB Catch Basin, CBI Catch Basin Inlet, GM Gas Meter, B Bollard, S Sign, CLF Chain Link Fence (Centreline Noted), Gate, PO-M Metal Pole, T/G Top of Grate, BF Board Fence, D Diameter, FH Fire Hydrant, UP Utility Pole, AN Anchor, LS Light Standard, BR Bike Rack, SP Water Stand Post, +65.00 Location of Elevations, +66.00 Top of Concrete Curb Elevation, MF Metal Flashing, C/L Centreline, Property Line, OHW Overhead Wires, Deciduous Tree, VC Valve Chamber (Watermain), WV Water Valve, HTB Hydro Transformer Bolt, Conc. Concrete, SWC Concrete Sidewalk, M-W Monitoring Well, WW Window Well, HTB Hydro Transformer Bolt.

ASSOCIATION OF ONTARIO LAND SURVEYORS PLAN SUBMISSION FORM V-13710. THIS PLAN IS NOT VALID UNLESS IT IS AN EMBOSSED ORIGINAL COPY ISSUED BY THE SURVEYOR in accordance with Regulation 1026, Section 29 (3).



Bearings are astronomic, derived from the easterly limit of Huron Avenue North, having a bearing of N22°58'42\"/>

ELEVATION NOTES 1. Elevations shown are geodetic and are referred to the CGVD28 geodetic datum. 2. It is the responsibility of the user of this information to verify that the job benchmark has not been altered or disturbed and that its relative elevation and description agrees with the information shown on this drawing.

UTILITY NOTES 1. This drawing cannot be accepted as acknowledging all of the utilities and it will be the responsibility of the user to contact the respective utility authorities for confirmation. 2. Only visible surface utilities were located. 3. A field location of underground plant by the pertinent utility authority is mandatory before any work involving breaking ground, probing, excavating etc.