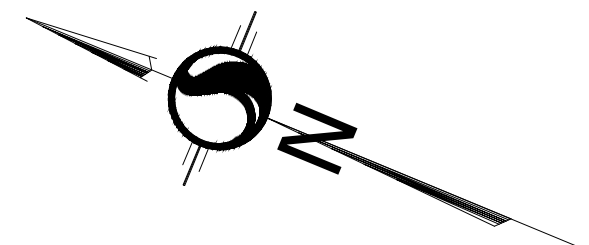
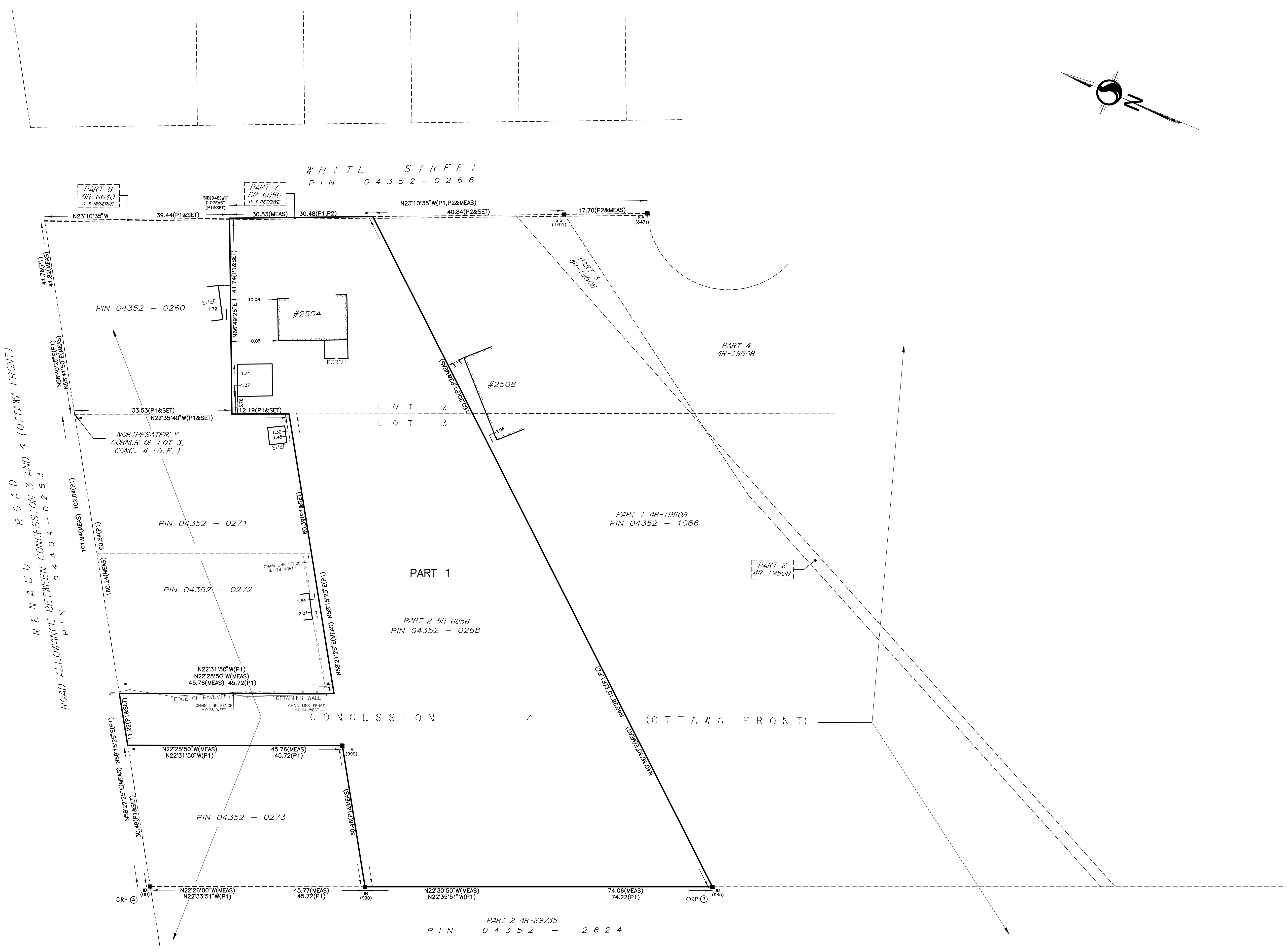


22 November 2021 1:53



I REQUIRE THIS PLAN TO BE DEPOSITED UNDER THE LAND TITLES ACT.		PLAN 4R-	
RECEIVED AND DEPOSITED		RECEIVED AND DEPOSITED	
DATE: _____		DATE: _____	
FRANCIS LAU ONTARIO LAND SURVEYOR		REPRESENTATIVE FOR THE LAND REGISTRAR FOR THE LAND TITLES DIVISION OF OTTAWA-CARLETON (4)	
SCHEDULE			
PART	LOT	CONCESSION	PIN
1	2 & 3	4 (OF)	ALL OF 04552-0268

**PLAN OF SURVEY OF
PART OF LOTS 2 & 3
CONCESSION 4 (OTTAWA FRONT)
(GEOGRAPHIC TOWNSHIP OF GLOUCESTER)
CITY OF OTTAWA**

Scale 1:400
0 5 10 20 30 METRES

METRIC CONVERSION
DISTANCES AND COORDINATES SHOWN ON THIS PLAN ARE IN METRES AND CAN BE CONVERTED TO FEET BY DIVIDING BY 0.3048

GRID SCALE CONVERSION
DISTANCES ARE GROUND AND CAN BE CONVERTED TO GRID BY MULTIPLYING BY THE COMBINED SCALE FACTOR OF 0.99992.

BEARING NOTE
BEARINGS ARE GIVEN FOR COMPARISON PURPOSE. A ROTATION OF 0°14'24" CLOCKWISE WAS APPLIED TO P1 & P2

LEGEND

SYMBOL	DENOTES	FOUND MONUMENTS
□	SEI MONUMENTS	
IB	IRON BAR	
IBB	ROUND IRON BAR	
SB	STANDARD IRON BAR	
SSB	SHORT STANDARD IRON BAR	
CC	CUT CROSS	
CP	CONCRETE PIN	
WT	WITNESS	
PN	PROPERTY IDENTIFICATION NUMBER	
MEAS	MEASURED	
PROP	PROPORTIONED	
OU	ORIGIN UNKNOWN	
SG	STATITEC GEOMATICS LTD.	
P1	PLAN SR-8656	
P2	PLAN 4R-19508	

OBSERVED REFERENCE POINTS DERIVED FROM THE CAN-NET VRS NETWORK GPS OBSERVATIONS ON NCC HORIZONTAL CONTROL MONUMENTS 1973035 AND 19680191. CENTRAL MERIDIAN: 76°30' WEST LONGITUDE MTR ZONE 9. MAGNUS (ORIGINAL) COORDINATES TO URBAN ACCURACY PER SEC 14(2) OF O. REG. 216/10

POINT ID	NORTHING	EASTING
①	503324.62	382662.94
②	503313.89	382708.76

COORDINATES CANNOT, IN THEMSELVES, BE USED TO RE-ESTABLISH CORNERS OR BOUNDARIES SHOWN ON THIS PLAN.

SURVEYOR'S CERTIFICATE
I CERTIFY THAT:
1. THIS SURVEY AND PLAN ARE CORRECT AND IN ACCORDANCE WITH THE SURVEYS ACT, THE SURVEYORS ACT AND THE LAND TITLES ACT AND THE REGULATIONS MADE UNDER THEM;
2. THE SURVEY WAS COMPLETED ON THE 6th DAY OF NOVEMBER, 2021.

DATE: _____ FRANCIS LAU
ONTARIO LAND SURVEYOR

Stantec Geomatics Ltd.
CANADA LAND SURVEYORS
ONTARIO LAND SURVEYORS
1331 CLYDE AVENUE, SUITE 400
OTTAWA, ONTARIO K2C 3G4
TEL: 613-721-4200 FAX: 613-721-2799
stantec.com

DRAWN: ZF CHECKED: CK/R PK: KJ FIELD: ES/AC PROJECT NO: 161614476-111