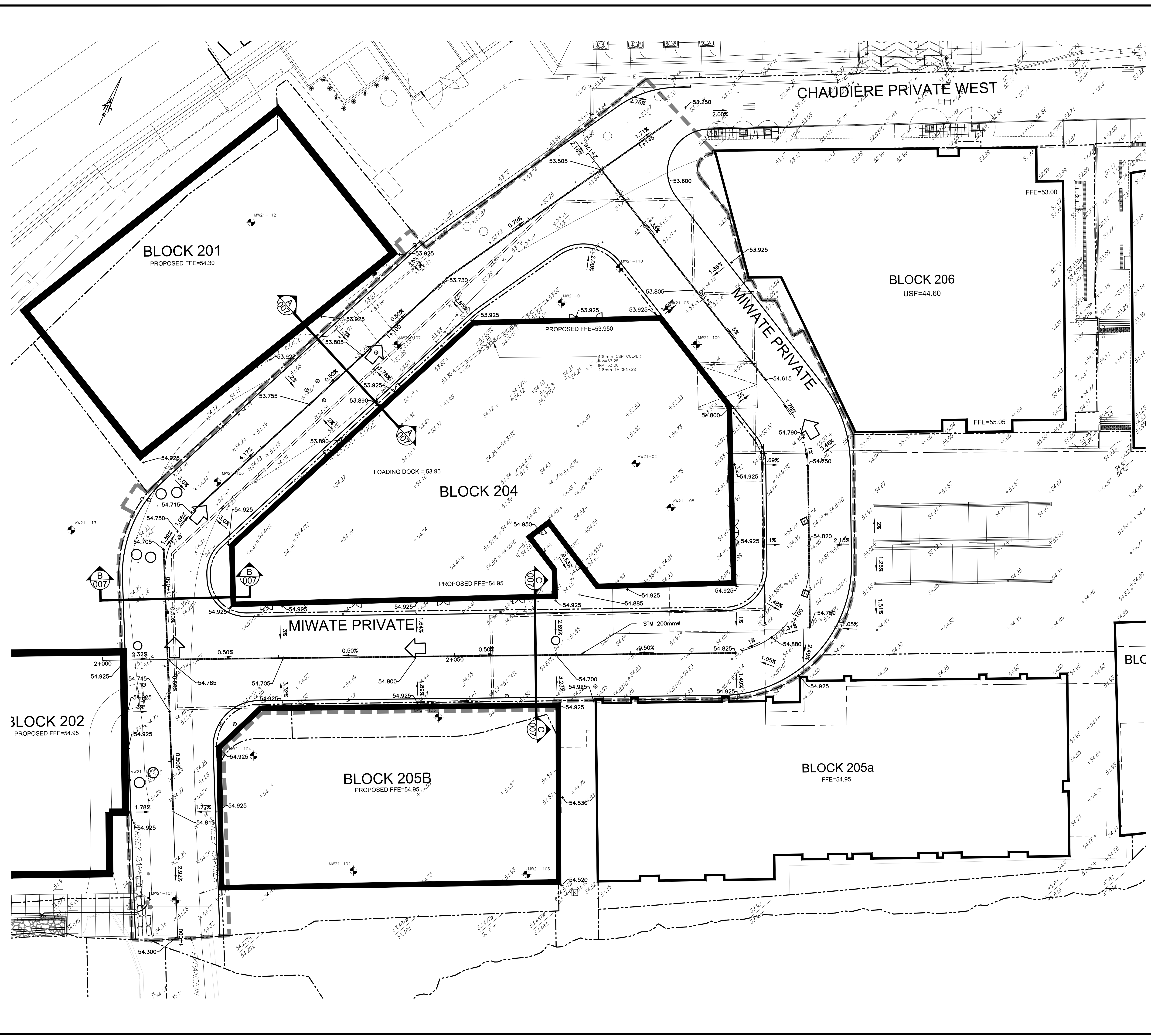


TITLE BLOCK 24x36 VERT ENG 3.0
 PRINT DATE: 2022/03/14 PAPER SIZE: A0
 PATH: C:\CIMA\CTOOL\Projects\A0000931_20\Blok 7_Chaudiere\400_Drafting\400_Civil\4_Grading\dwg\LAYOUT_C004B_Ultimate



EXISTING		PROPOSED	
WM	WATERMAIN	WM	WATERMAIN
SAN	SANITARY SEWER	SAN	SANITARY SEWER
STM	STORM SEWER	STM	STORM SEWER
D	DRAIN	D	DRAIN
G	GAS LINE (APPROX. LOC.)	G	GAS LINE (APPROX. LOC.)
T	UNDERGROUND TELEPHONE (APPROX. LOC.)	T	UNDERGROUND TELEPHONE (APPROX. LOC.)
CA	UNDERGROUND CABLE (APPROX. LOC.)	CA	UNDERGROUND CABLE (APPROX. LOC.)
E	UNDERGROUND ELECTRICITY (APPROX. LOC.)	E	UNDERGROUND ELECTRICITY (APPROX. LOC.)
OT	OVERHEAD WIRE	OT	OVERHEAD WIRE
---	LOT LINE	---	LOT LINE
---	RIGHT-OF-WAY LIMITS	---	RIGHT-OF-WAY LIMITS
---	EASEMENT	---	EASEMENT
---	TOP OF SLOPE	---	TOP OF SLOPE
---	DITCH CENTER	---	DITCH CENTER
---	BOTTOM OF SLOPE	---	BOTTOM OF SLOPE
⊕	CATCHBASIN	⊕	CATCHBASIN
⊕	MANHOLE/CATCHBASIN	⊕	MANHOLE/CATCHBASIN
⊕	MANHOLE	⊕	MANHOLE
⊕	FIRE HYDRANT	⊕	FIRE HYDRANT
⊕	VALVE	⊕	VALVE
⊕	REDUCER	⊕	REDUCER
⊕	TEE	⊕	TEE
⊕	VALVE CHAMBER	⊕	VALVE CHAMBER
⊕	PRIVATE UTILITIES (WATERMAIN)	⊕	PRIVATE UTILITIES (WATERMAIN)
⊕	NATURAL GAS VALVE	⊕	NATURAL GAS VALVE
⊕	SIGN	⊕	SIGN
⊕	STOP SIGN	⊕	STOP SIGN
⊕	TRAFFIC LIGHT	⊕	TRAFFIC LIGHT
⊕	ELECTRICITY POLE	⊕	ELECTRICITY POLE
⊕	TELEPHONE POLE	⊕	TELEPHONE POLE
⊕	ELECT.-TEL-STREET LIGHT POLE	⊕	ELECT.-TEL-STREET LIGHT POLE
⊕	ELECT.-TEL-TRANSFORMER POLE	⊕	ELECT.-TEL-TRANSFORMER POLE
⊕	PRIVATE STREET LIGHT	⊕	PRIVATE STREET LIGHT
⊕	ELECTRICITY MANHOLE	⊕	ELECTRICITY MANHOLE
⊕	TELEPHONE MANHOLE	⊕	TELEPHONE MANHOLE
⊕	SURVEY STATION	⊕	SURVEY STATION
+	ELEVATION	+	ELEVATION
+		+	99,000
⊕	BOREHOLE (LOC. APPROX.)	⊕	BOREHOLE (LOC. APPROX.)
→	OVERLAND FLOW	→	OVERLAND FLOW
→	TRENCH DRAIN	→	TRENCH DRAIN
---	WORK LIMIT	---	WORK LIMIT
---	UNDERGROUND PARKING	---	UNDERGROUND PARKING
---	GARAGE LIMIT	---	GARAGE LIMIT

No.	Date	Description	By
1	APR. 18, 2022	ISSUED FOR SITE PLAN APPLICATION	A.C.

DESIGNED BY

APPROVED BY

CLIENT:

DREAM THEIA ONTARIO
BLOCK 204A LP

PROJECT NAME:

ZIBI ONTARIO
BLOCK 204
315 PRIVE MIWATE PRIVATE,
CHAUDIÈRE ISLAND
OTTAWA, ONTARIO

SHEET TITLE:

**GRADE CONTROL AND
DRAINAGE PLAN
(ULTIMATE)**

DISCIPLINE:

CIVIL

DATE:	SCALE:
2022/03/14	1:250
DESIGNER:	APPROVER:
J. SAUVE	A. CHAUMONT
PROJECT No.:	DRAWING No.:
A000931	C004B
SHEET No.:	5 of 11

NOTE OF CAUTION

THE GEODETIC COORDINATES OF EVERY ITEM INCLUDED AS PART OF THIS DOCUMENT ARE IN NAD83 - ORIGINAL / MTM - REFERENCE SYSTEM AND HAVE NO LEGAL VALUE. THE SITE LAYOUT MUST BE COMPLETED USING THE OFFICIAL BENCHMARKS OF AN ACCREDITED LAND SURVEYOR IN THE NAD83 - ORIGINAL / MTM - REFERENCE SYSTEM.

THE UNDERGROUND FEATURES AND INFORMATION THAT APPEAR ON THE DRAWINGS WERE OBTAINED FROM THE PUBLIC UTILITY COMPANIES AND/OR FROM THE CITY EACH RESPECTIVELY.

ALL INFORMATION UNDER THE LEGEND 'EXISTING' IS FOR INFORMATION ONLY. COMPLETE OR EXACT LOCATION AND ELEVATION OF UNDERGROUND SERVICES ARE NOT GUARANTEED.

CERTAIN UNDERGROUND FEATURES ON PRIVATE PROPERTY ARE NOT SHOWN ON THE CURRENT DRAWING.

ANYONE WHO PROCEEDS WITH EXCAVATION WORK SHALL VERIFY THE EXACT LOCATION OF ALL UNDERGROUND FEATURES, BY EXPLORATORY EXCAVATIONS, AND SHALL ASSUME FULL RESPONSIBILITY IF THERE IS ANY DAMAGE THAT OCCURS DURING WORK.

THE CONTRACTOR WILL HAVE THE RESPONSIBILITY AND THE OBLIGATION TO VALIDATE, BY EXPLORATORY EXCAVATION, THE SIZE OF THE PUBLIC UTILITIES UNDERGROUND SERVICES AND TO WARN THE ENGINEER OF ANY CONFLICT WITH THE PROJECTED WORK.