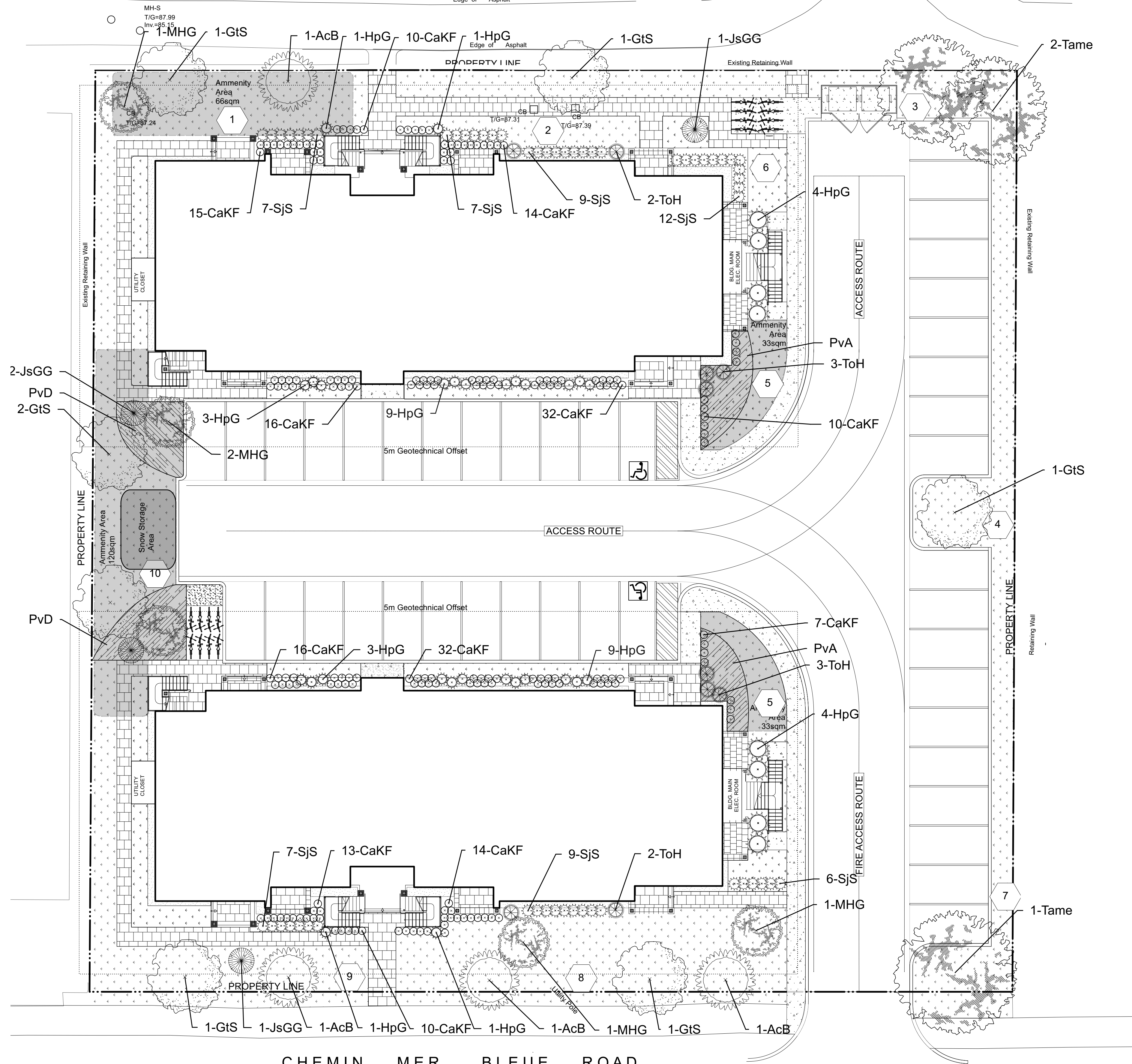
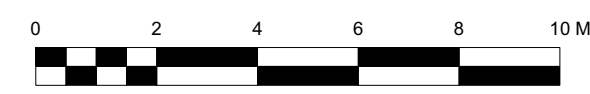


TERRASSE GARDENPOST TERRACE



CHEMIN MER BLEUE ROAD



NOTE
 THIS PLAN IS ISSUED FOR SITE PLAN CONTROL SUBMISSION ONLY. ADDITIONAL DETAILING AND SPECIFICATIONS ARE REQUIRED PRIOR TO TENDERING OR CONSTRUCTION.
 DRAWING TO BE READ IN CONJUNCTION WITH TREE CONSERVATION REPORT. REFER TO TREE CONSERVATION REPORT PREPARED BY A.B. DATED 2021/11/22 FOR TREE PROTECTION MEASURES AND DETAILS.
 SERVICING INFORMATION SHOWN AS REFERENCE ONLY. REFER TO CIVIL DRAWINGS

Legend

	Proposed Trees		Sod
	Proposed Amenity Areas		Precast Pavement
	Proposed Snow Storage Area		Concrete Pavement
	Property Line		Perennial Bed
	5m Geotechnical Offset		Maintenance Edge
	Soil Volume Calculation Areas		

inside 5 metre offset – allowance for low water requirement plants such as small ornamental plants such as horticultural cedars, junipers, grafted deciduous such as caragana, small crab apples under 5 metre height.
 outside of 5 metre offset – low water requirement trees

Plant List

ID	Qty	Botanical Name	Common Name	Scheduled Size	Remarks
TREES					
AcB	4	Amelanchier canadensis 'Ballerina'	Ballerina Serviceberry (tree form)	50mm caliper	WB Staked
GtS	7	Gleditsia triacanthos inermis 'Draves'	Streetkeeper Honeylocust	60mm caliper	WB Staked
MHG	5	Malus x 'Harvest Gold'	Harvest Gold Crabapple	50mm dia.	WB, Staked
Tame	3	Tilia americana	American Linden		
SHRUBS					
HpG	36	Hydrangea paniculata 'Grandiflora'	Peegee Hydrangea	60cm ht	1.5m o.c.
JsGG	4	Juniperus scopularum 'Grey Gleam'	Grey Gleam Juniper	125cm ht	specimen
SJS	57	Spiraea japonica 'Shirobana'	Shirobana Spirea	50cm ht	0.9m o.c.
ToH	10	Thuja occidentalis 'Holmstrup'	Holmstrup Eastern Arborvitae	100 cm ht.	Potted
PERENNIALS					
CaKF	189	Calamagrostis x acutiflora 'Karl Foerster'	Karl Foerster Feather Reed Grass	1 gal.	Potted
PvA	46	Perennial Mix A - Sun-Shade	Perennial variety Sun-Shade	150mm pot	
PvD	71	Perennials D- Shade	Perennial variety Shade	150mm pot	

PvA Sun/Shade Perennials (minimum 3 species mix): Shasta Daisy, Coneflower, Autumn Joy Sedum, Heath Aster, Liatris Spicata
 PvD Shade Perennials (minimum 3 species mix): Creeping Veronica, Neptune Hosta, Color Festival Hosta, Obsidian Coral Bells, Penny's Pink Hellebore

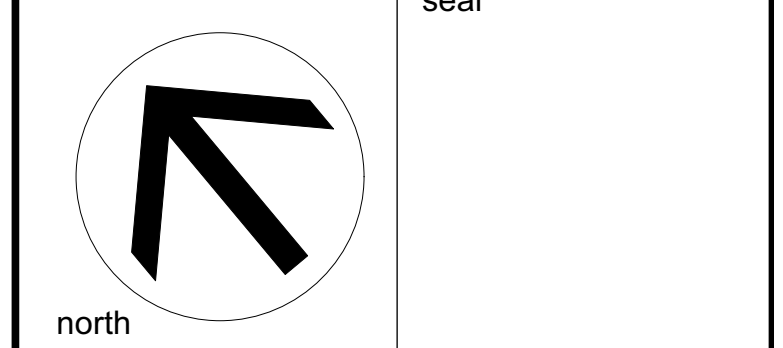
Soil Volume Area, Tree Quantity and Size	Tree Quantity	OTTAWA Target Soil Volume (m³)	Design Soil Volume	Soil Adequacy percentage
AREA 1 - 2 medium trees				
plant bed (70 sq m x 0.45 metre deep)	2	24.0	31.5	131.25%
AREA 2 - 2 small ornamental trees				
plant bed (35 sq m x 0.45 metre deep)	2	18.0	15.8	87.50%
AREA 3 - 2 large shade trees				
plant bed (64 sq m x 0.45 metre deep)	2	36.0	28.8	80.00%
AREA 4 - 1 medium tree				
plant bed (57 sq m x 0.45 metre deep)	1	25.0	25.7	102.60%
AREA 5 - 1 small ornamental tree				
plant bed (36 sq m x 0.45 metre deep)	1	15.0	16.2	108.00%
AREA 6 - 1 small columnar trees				
plant bed (29 sq m x 0.45 metre deep)	1	15.0	13.1	87.00%
AREA 7 - 1 large shade tree				
plant bed (46 sq m x 0.55 metre deep)	1	30.0	25.3	84.33%
AREA 8 - 2 large trees, 2 small ornamental trees				
plant bed (160 sq m x 0.5 metre deep)	7	99.0	80.0	80.81%
AREA 9 - 1 medium tree, 1 small ornamental				
plant bed (41 sq m x 0.5 metre deep)	2	24.0	20.5	85.42%
AREA 10 - 2 small ornamental trees, 3 medium trees				
plant bed (118 sq m x 0.45 metre deep)	5	63.0	53.1	84.29%

* Small ornamental trees with growth to 8-15cm DBH, large shrubs, and columnar conifers calculated using 'How much soil to grow a big tree' by DeepRoot as a guide

GENERAL NOTES

- All general site information and conditions compiled from existing plans, surveys and consultant's field notes. Report all discrepancies prior to any work. No responsibility is born by the Consultant for unknown subsurface conditions.
- The location of the utilities is approximate only, and the exact location should be determined by consulting the municipal authorities and utility companies concerned. The Contractor shall prove the location of utilities and shall be responsible for adequate protection from damage.
- All dimensions shown are to be verified on site prior to any construction. No deviations are to be made from the layouts as shown on this plan without prior consultation with the Landscape Architect and Owner.
- Obtain approval of Landscape Architect for granular base and layout of all pavement areas prior to construction.
- Stake planting locations and receive approval of Landscape Architect, prior to excavation of any planting pits. No substitutions of plant material shall be made without prior approval of the Landscape Architect.
- Where clay is encountered proper drainage must be ensured in tree/shrub pits, prior to planting. Have method approved by Landscape Architect.
- All sodded areas to receive a minimum of 150mm of topsoil over graded sub-base. If sod with mesh is used, mesh to be removed completely during sodding operations. Sod shall come from an approved source and shall be laid within 24 hours of being cut in the nursery. Only nursery sod shall be used.
- Final subgrade is to be approved by the Landscape Architect prior to sod being laid.
- Maintain positive surface runoff through the entire construction period.
- Reinstate all areas and items damaged as a result of construction activities.

6		
5		
4		
3		
2		
1	issued for site plan review	2022/03/11
no.	issue / revision	date



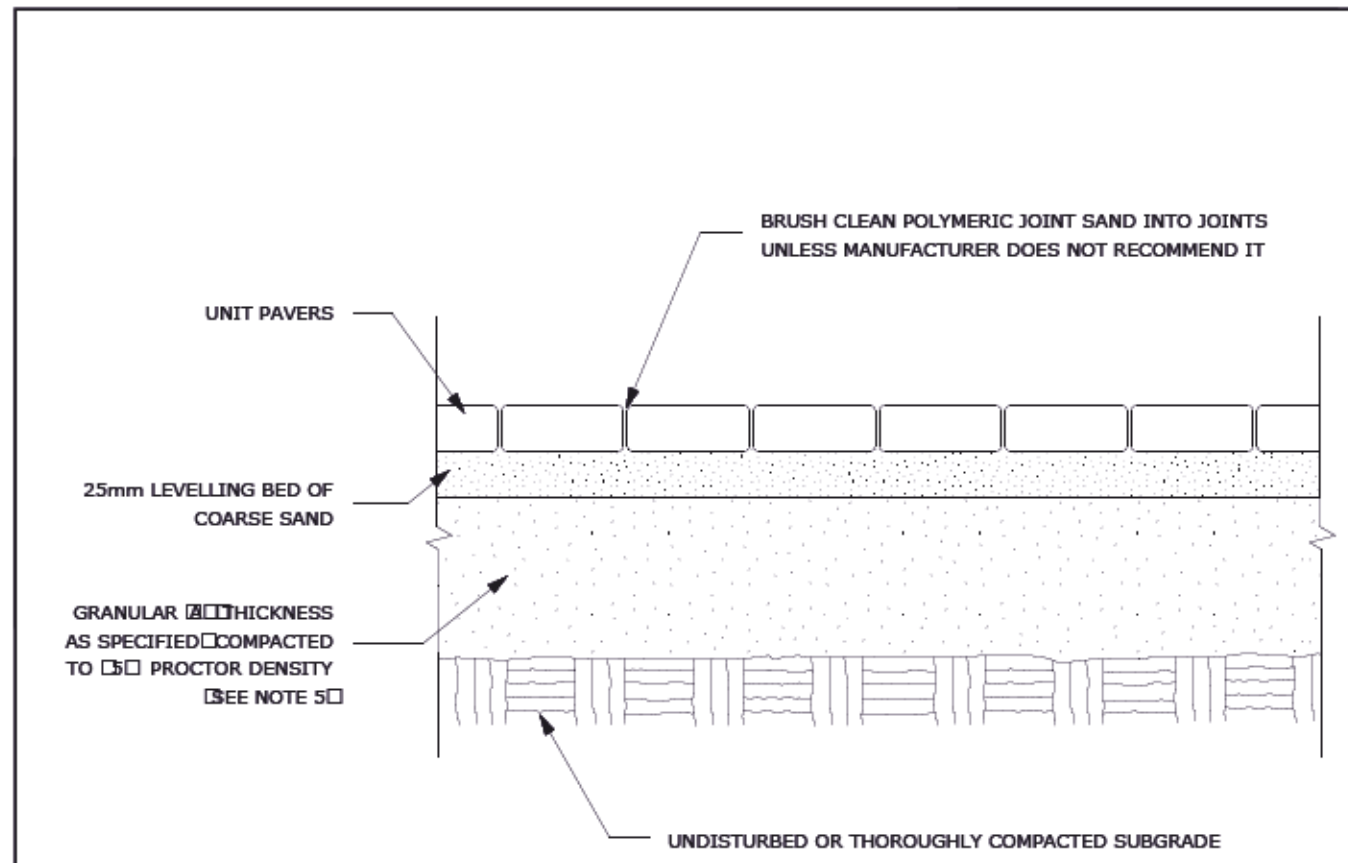
Ruhland & Associates Ltd
 landscape architecture • urban design • site planning
 Ph: 613-224-0244 Fax: 613-224-1331 info@ral.ca www.ral.ca

project
2345 MER BLEUE, OTTAWA ON

drawing title
LANDSCAPE PLAN

scale 1:150	drawn by C. Reed	designed by C. Reed
date March 2022	checked by M. Ruhland	plot date March 11, 2022
project number 21-1648	drawing number L-01	

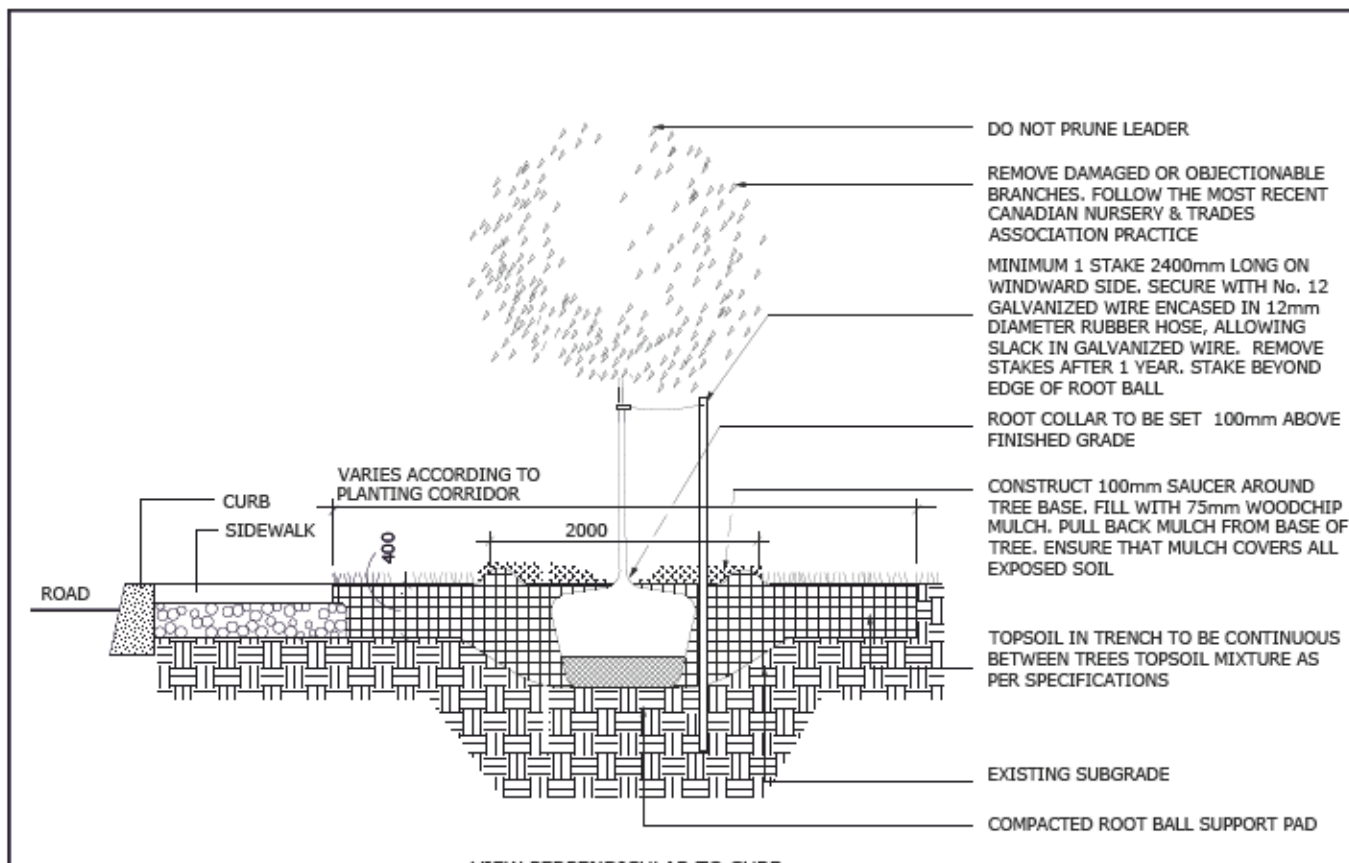
Contractor to check and verify all dimensions on the job



- NOTES:**
- THE LEVELING COURSE (BEDDING SAND) SHALL BE PLACED LOOSE, IN A UNIFORM LAYER AT A MAXIMUM DEPTH OF 25mm TO ACHIEVE THE FINAL COMPACTED THICKNESS AND GRADE AS SPECIFIED
 - INSTALL SOLID EDGE RESTRAINT BETWEEN UNIT PAVERS AND ANY SOFT SURFACE (SOD, PLANTING BED, ETC.)
 - UNIT PAVERS ARE THEN PLACED ON TOP OF THE LEVELING COURSE AND ADDITIONAL SAND SWEEP BETWEEN THE UNIT PAVERS
 - THE UNIT PAVERS ARE THEN VIBRATED INTO PLACE WITH A VIBRATOR AND WATER IS ADDED TO ASSIST IN THE SETTLING OF THE JOINT SAND
 - GRANULAR (DEPTH TO BE 100mm FOR PEDESTRIAN AREAS AND 150mm FOR VEHICULAR ACCESSSES, OR AS RECOMMENDED BY GEOTECHNICAL INVESTIGATION
- USE OF THIS DETAIL REQUIRES THE PRIOR APPROVAL OF THE GENERAL MANAGER

Ottawa TITLE: UNIT PAVING ON GRANULAR BASE DATE: MAY 2001
 REV: FEB 2017
 DWG No: SCC

ADDITIONAL NOTES FOR NUMBER 5:
 100mm DEPTH GRANULAR 'A' TO BE USED (AFTER APPROVAL) ONLY IN PEDESTRIAN WHERE NO SNOW REMOVAL IS PLANNED. ALL OTHER PEDESTRIAN AREAS ARE TO RECEIVE 150mm COMPACTED GRANULAR 'A' MINIMUM, VEHICULAR 200mm MINIMUM. FURTHER ADJUSTMENTS TO BE SPECIFIED IN RELATION TO SITE CONDITIONS AND GEOTECHNICAL RECOMMENDATIONS.

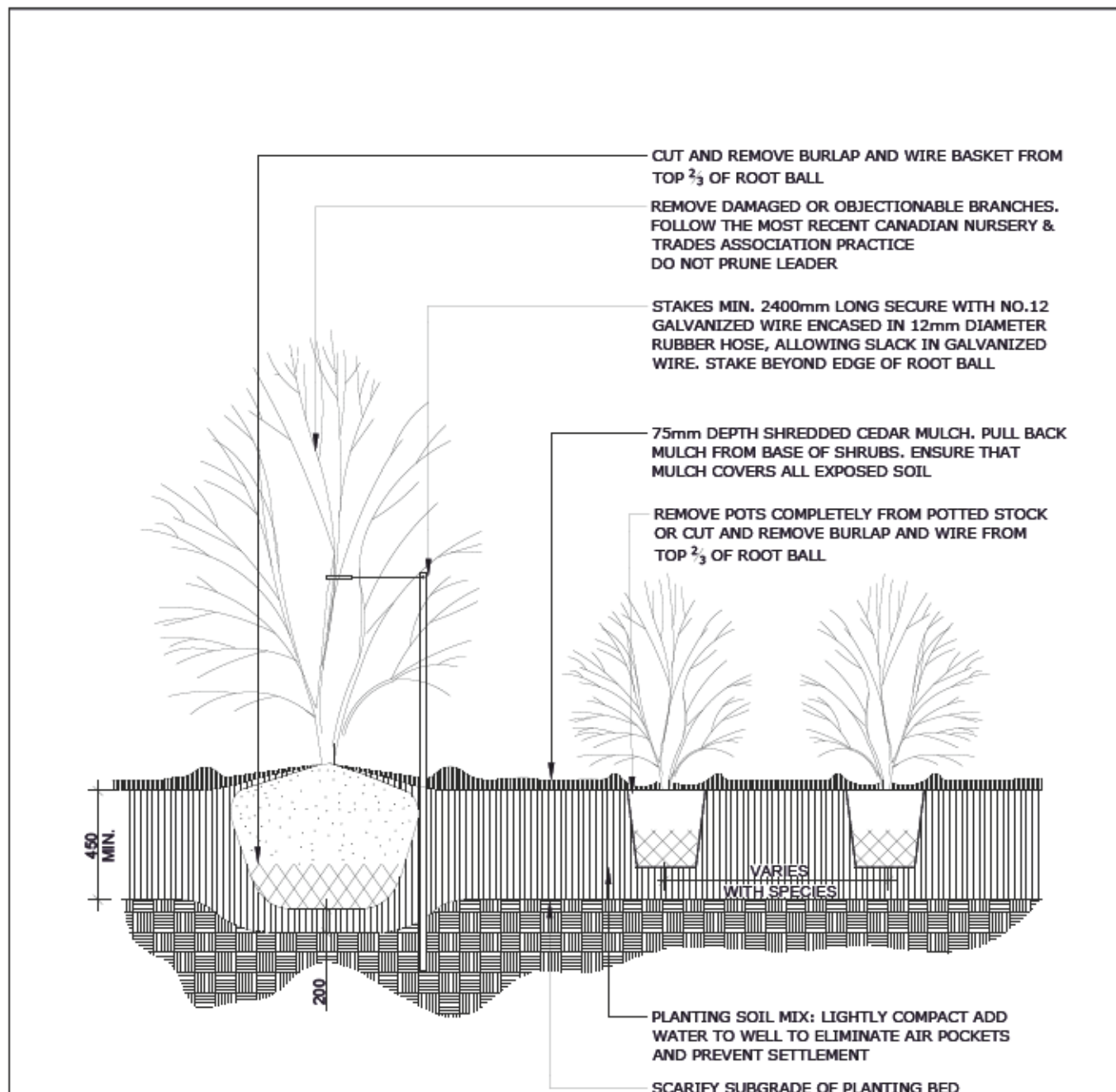


- NOTES:**
- ALL MEASUREMENTS ARE IN MILLIMETRES UNLESS OTHERWISE NOTED
 - CUT AND REMOVE BURLAP AND WIRE BASKET FROM TOP 2/3 OF ROOT BALL WITHOUT DISTURBING ROOTS
 - LOCATION AS SPECIFIED ON THE CONTRACT DRAWINGS

Ottawa TITLE: PLANTING TRENCH WELL DRAINED SOILS DATE: MAY 2001
 REV: JAN 2017
 DWG No: L1

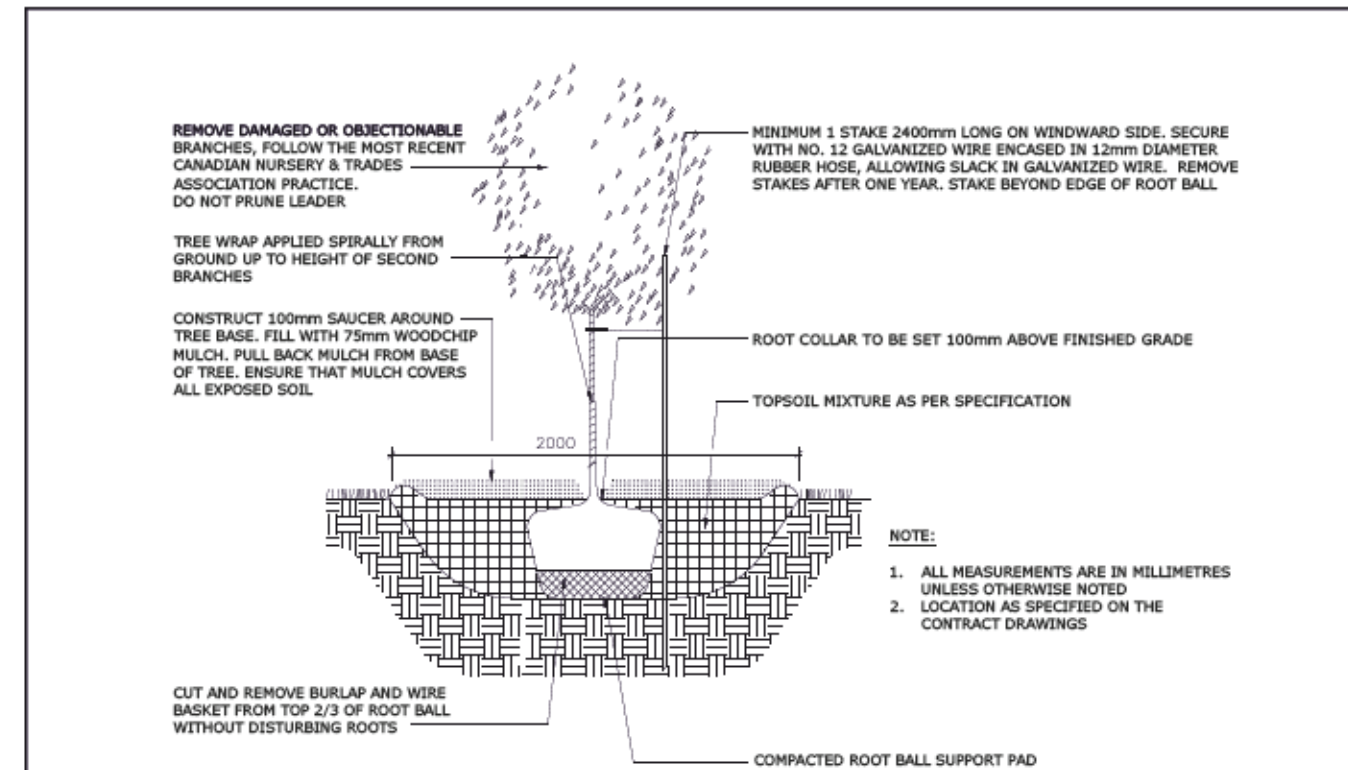
SOIL VOLUME NOTES TO GO WITH L1 TREE SOIL VOLUME REQUIREMENTS:

- TREE SOIL VOLUMES QUANTITIES INCLUDE THE TOP 450mm OF SOIL/EXISTING SUBSOIL LAYER TO CALCULATE TOTAL SOIL VOLUMES REQUIRED BY CITY OF OTTAWA FOR SUSTAINABLE TREE GROWTH.
- WHERE EXISTING MATERIAL BELOW THE SPECIFIED TOPSOIL IS NOT CONDUSIVE TO TREE GROWTH, AN ADDITIONAL LAYER OF PLANTING MEDIUM IS TO BE INSTALLED BELOW SPECIFIED TOPSOIL DEPTH TO OBTAIN 450-1000mm SOIL VOLUME DEPTH REQUIRED.
- REFER TO SOIL VOLUME CHART AND PLANS FOR AREA WHERE TREE SOIL VOLUMES ARE REQUIRED.

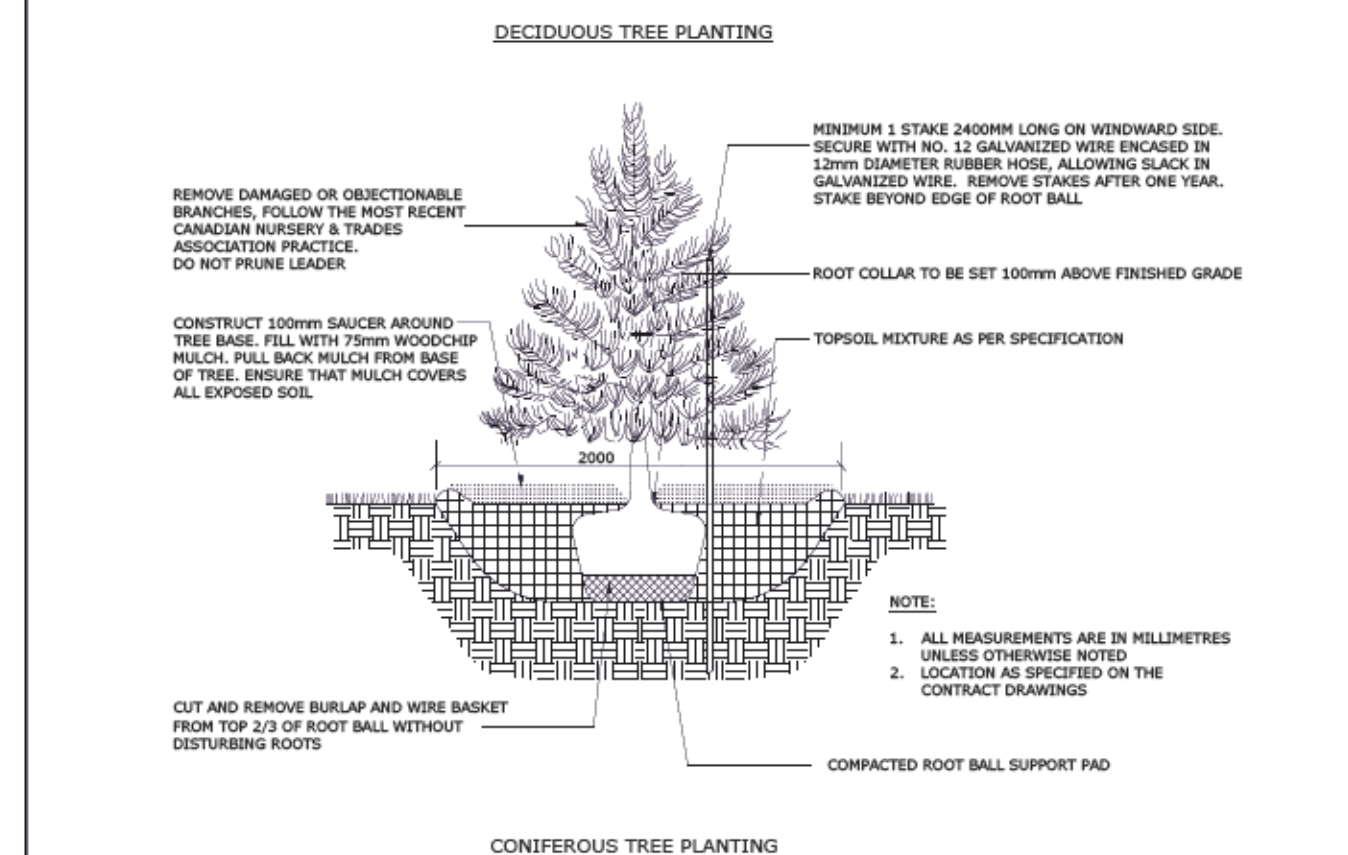


- NOTES:**
- PLANTING SOIL MIXTURE AS PER SPECIFICATION.
 - SHRUBS SPECIFIED BARE ROOTS (BURLAP) TO BE PLANTED SO THAT ROOTS ARE FULLY EXTENDED IN PLANTING HOLE WITH SOIL MIX BACKFILLED CAREFULLY TO PREVENT ROOT DAMAGE
 - PROVIDE 100 HIGH EARTH SAUCER AROUND SHRUB BED
 - STAKES TO BE REMOVED AT COMPLETION OF TWO YEAR WARRANTY PERIOD

Ottawa TITLE: CONTINUOUS SHRUB BED PLANTING DATE: FEB 2013
 REV: FEB 2014
 DWG No: L17

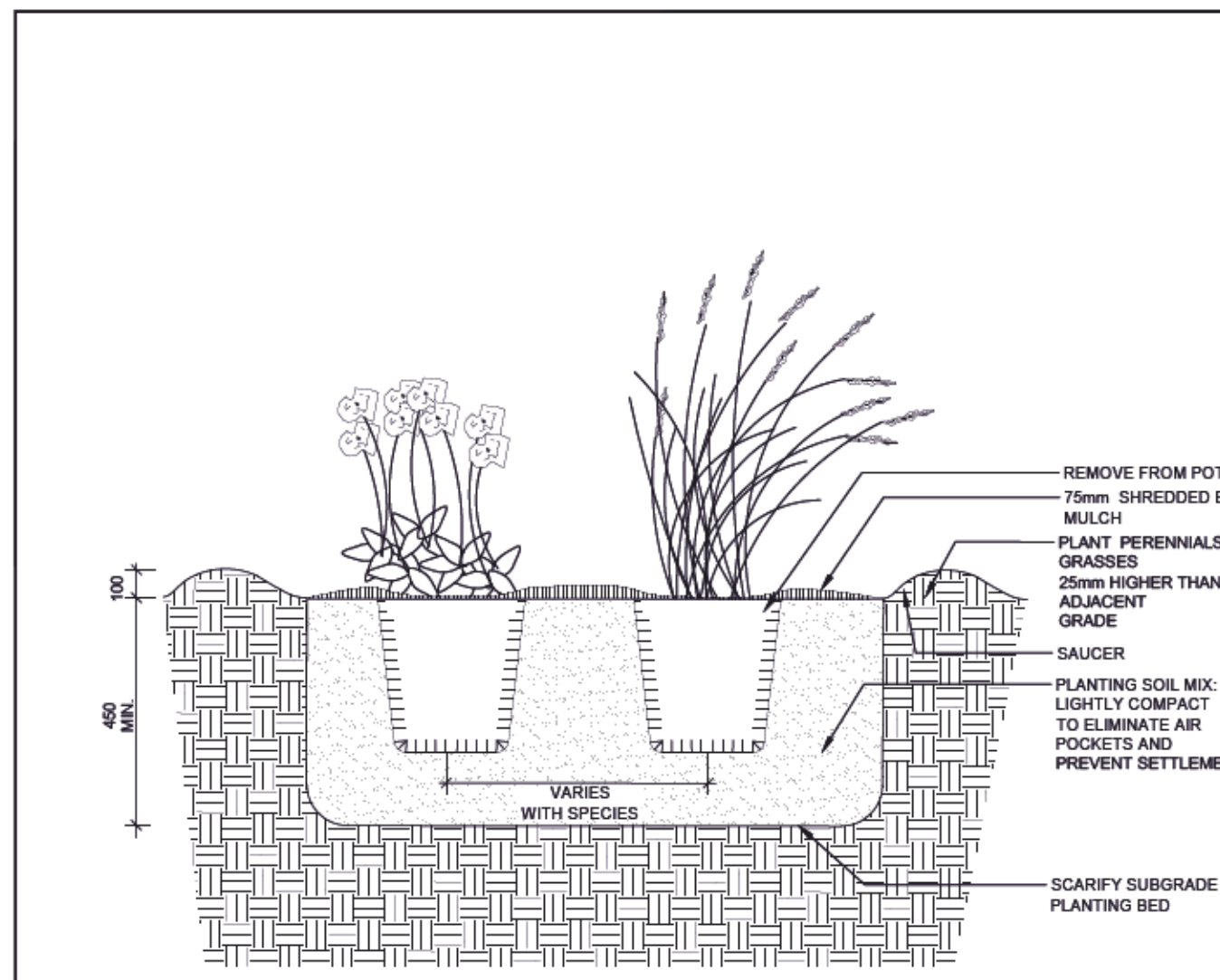


- NOTE:**
- ALL MEASUREMENTS ARE IN MILLIMETRES UNLESS OTHERWISE NOTED
 - LOCATION AS SPECIFIED ON THE CONTRACT DRAWINGS



- NOTE:**
- ALL MEASUREMENTS ARE IN MILLIMETRES UNLESS OTHERWISE NOTED
 - LOCATION AS SPECIFIED ON THE CONTRACT DRAWINGS

Ottawa TITLE: PLANTING PIT, WELL DRAINED SOILS (ROAD ALLOWANCE) DATE: MAY 2001
 REV: JAN 2017
 DWG No: L3



- NOTES:**
- ALL DIMENSIONS ARE IN MILLIMETRES UNLESS OTHERWISE NOTED.
 - PLANTING SOIL MIXTURE AS PER SPECIFICATION.
 - PROVIDE 100MM HIGH EARTH SAUCER AROUND PERENNIAL/GRASS BED.

Ottawa TITLE: PERENNIAL AND ORNAMENTAL GRASS PLANTING DATE: JAN 2013
 REV:
 DWG No: L21

GENERAL NOTES

- All general site information and conditions compiled from existing plans, surveys and consultant's field notes. Report all discrepancies prior to any work. No responsibility is born by the Consultant for unknown subsurface conditions.
- The location of the utilities is approximate only, and the exact location should be determined by consulting the municipal authorities and utility companies concerned. The Contractor shall prove the location of utilities and shall be responsible for adequate protection from damage.
- All dimensions shown are to be verified on site prior to any construction. No deviations are to be made from the layouts as shown on this plan without prior consultation with the Landscape Architect and Owner.
- Obtain approval of Landscape Architect for granular base and layout of all pavement areas prior to construction.
- Stake planting locations and receive approval of Landscape Architect, prior to excavation of any planting pits. No substitutions of plant material shall be made without prior approval of the Landscape Architect.
- Where clay is encountered proper drainage must be ensured in tree/shrub pits, prior to planting. Have method approved by Landscape Architect.
- All sodded areas to receive a minimum of 150mm of topsoil over graded sub-base. If sod with mesh is used, mesh to be removed completely during sodding operations. Sod shall come from an approved source and shall be laid within 24 hours of being cut in the nursery. Only nursery sod shall be used.
- Final subgrade is to be approved by the Landscape Architect prior to sod being laid.
- Maintain positive surface runoff through the entire construction period.
- Reinstate all areas and items damaged as a result of construction activities.

6		
5		
4		
3		
2		
1	issued for site plan review	2022/03/11

no.	issue / revision	date
	seal	
	north	

Ruhland & Associates Ltd
 landscape architecture • urban design • site planning
 Ph: 613-228-4724 Fx: 613-224-0131 info@ralta.ca www.ralta.ca

project
**2345 MER BLEUE,
 OTTAWA ON**

drawing title
SPC Details

scale	drawn by C. Reed	designed by C. Reed
date March 2022	checked by M. Ruhland	plot date March 11, 2022
project number 21-1648	drawing number L-02	

Contractor to check and verify all dimensions on the job