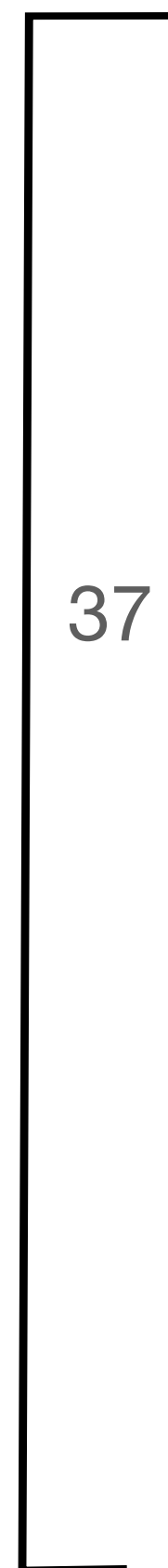


Typical Floor Plate

approx-789 M₂ / 8,500 s.f.



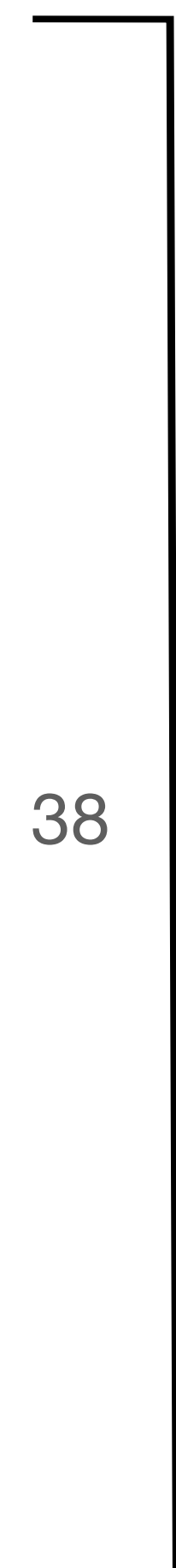
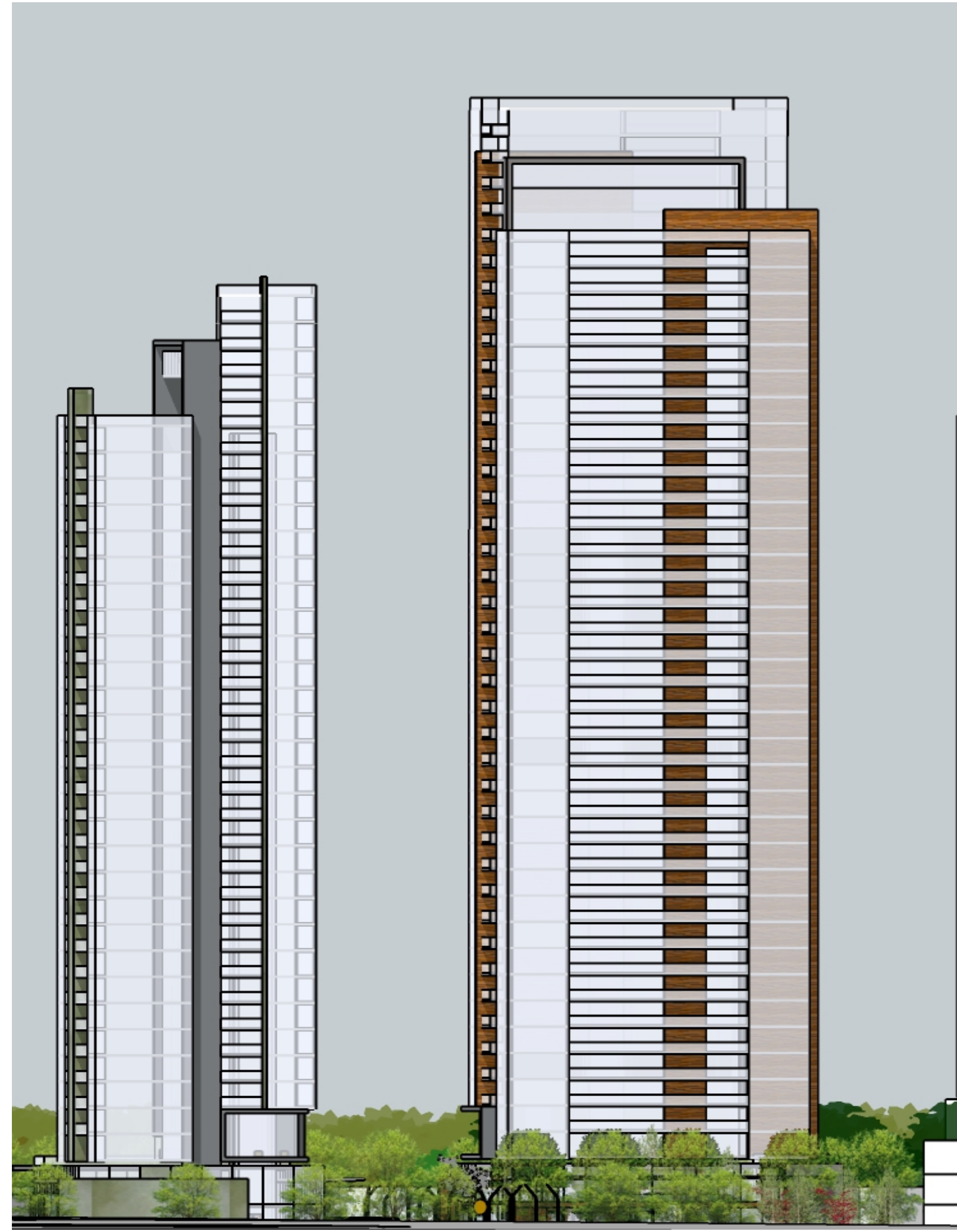
37

2

35 floors x 8 units = 280 units
 35 floors x 7 units = 245 units



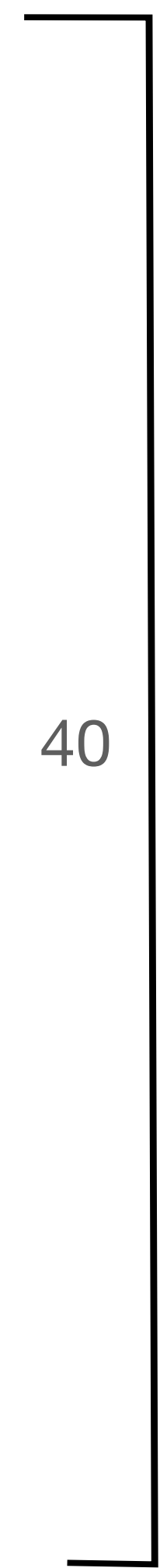
35



38

2

38 floors x 8 units = 304 units
 38 floors x 7 units = 266 units



40

Proposed Unit #'s

*Range 584 units / 511 units

Dependent on the mix of one, two or three bedroom units