

**TOPOGRAPHICAL PLAN OF SURVEY OF
PART OF LOT 10
CONCESSION 3 (OTTAWA FRONT)
(Geographic Township of Gloucester)
CITY OF OTTAWA**

Surveyed by Annis, O'Sullivan, Vollebek Ltd.
Scale 1 : 250



Metric
DISTANCES SHOWN ON THIS PLAN ARE IN METRES AND
CAN BE CONVERTED TO FEET BY DIVIDING BY 0.3048

Surveyor's Certificate

- I CERTIFY THAT:
1. This survey and plan are correct and in accordance with the Surveys Act, the Surveyors Act and the regulations made under them.
 2. The survey was completed on April 19, 2021.

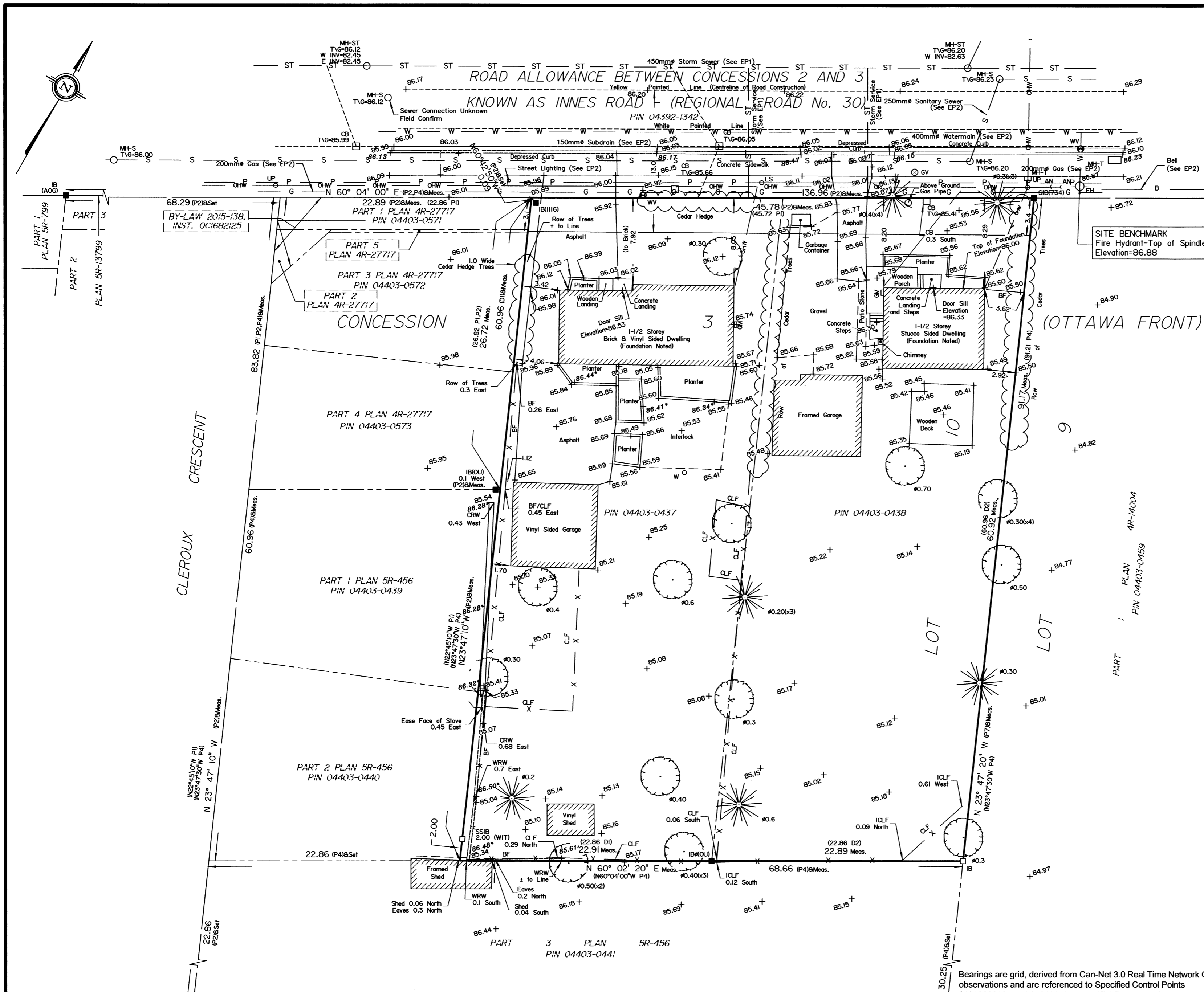
Date: April 20, 2021
Surveyor: Tyler J. Allison
Ontario Land Surveyor

Notes & Legend

- Denotes
- +— Survey Monument Planted
 - Survey Monument Found
 - SIB Standard Iron Bar
 - SSIB Short Standard Iron Bar
 - IB Iron Bar
 - (OU) Origin Unknown
 - (WIT) Witness
 - Meas. Measured
 - (AOG) Annis, O'Sullivan, Vollebek Ltd.
 - (P1) Plan 4R-27717
 - (P2) Plan by Arpentage Dutrisc Surveying Inc. Index No. GL-OF-3-10-2
 - (P3) Plan 5R-799
 - (P4) Plan 5R-456
 - (P5) (AOG) Plan Dated September 21, 1977
 - (P6) Plan by Webster & Simmons Surveying Ltd. Ref. No. 4-CON 3 O.F.
 - (P7) Plan 4R-14004
 - (DI) Inst. N644579
 - (D2) Inst. NS159597
 - EP2 Plan and Profile Drawing of Innes Road Storm Sewer Extension, Drawing 3077-106 Rev. 1 "As-Built" Dated Aug./77 City of Ottawa U.C.C. Central Registry Data, Sheets H-28-04 and H-28-05 Dated May 2021
 - (Tree Symbol) Deciduous Tree
 - (Star Symbol) Coniferous Tree
 - (FH) Fire Hydrant
 - (WV) Water Valve
 - (MH-S) Maintenance Hole (Sanitary)
 - (MH-ST) Maintenance Hole (Storm Sewer)
 - (MH) Maintenance Hole (Unidentified)
 - (MH-T) Maintenance Hole (Traffic)
 - (W) Concrete Well
 - (GV) Gas Valve
 - (GM) Gas Meter
 - (CB) Catch Basin
 - (T/G) Top of Grate
 - (ICLF) Irregular Chain link Fence
 - (BF) Board Fence
 - (CLF) Chain link Fence
 - (WRW) Wood Retaining Wall
 - (CRW) Concrete Retaining Wall
 - (OP) Utility Pole
 - (AN) Anchor
 - (LS) Light Standard
 - (D) Diameter
 - (+65.00) Location of Elevations
 - (+65.00) Top of Concrete Curb Elevations
 - (+65.00) Top of Retaining Wall Elevations
 - (B) Underground Bell
 - (OHW) Overhead Wires
 - (P) Underground Hydro
 - (G) Underground Gas

ASSOCIATION OF ONTARIO
LAND SURVEYORS
PLAN SUBMISSION FORM
V-11264

THIS PLAN IS NOT VALID UNLESS
IT IS AN EMBOSSED ORIGINAL
COPY ISSUED BY THE SURVEYOR
IN ACCORDANCE WITH
Regulation 1026, Section 29 (3)



ELEVATION NOTES

1. Elevations shown are geodetic and are referred to the CGVD28 geodetic datum.
2. It is the responsibility of the user of this information to verify that the job benchmark has not been altered or disturbed and that its relative elevation and description agrees with the information shown on this drawing.

UTILITY NOTES

1. This drawing cannot be accepted as acknowledging all of the utilities and it will be the responsibility of the user to contact the respective utility authorities for confirmation.
2. Only visible surface utilities were located.
3. A field location of underground plant by the pertinent utility authority is mandatory before any work involving breaking ground, probing, excavating etc.
4. Underground information (including invert elevations) is compiled from EP1 and EP2 and is subject to field confirmation.

ANNIS, O'SULLIVAN, VOLLEBEK LTD. grants to Landric Homes ("The Client"), their solicitors, mortgagees, and other related parties, permission to use original, signed, sealed copies of the Topographical Plan of Survey in transactions involving The Client.

Bearings are grid, derived from Can-Net 3.0 Real Time Network GPS observations and are referenced to Specified Control Points 01919680184 and 019198434761, MTM Zone 9 (76°30' West Longitude) NAD-83 (original).

01919680184 Northing 5040610.16 Easting 384736.56
019198434761 Northing 5036178.12 Easting 372436.11

For bearing comparisons a rotation of 0°22'10" counterclockwise was applied to Plan (P2).
For bearing comparisons a rotation of 0°40'20" counterclockwise was applied to Plan (P4).

Rev.	Date	Comment
Rev. 1	May 28, 2021	Add Underground Information
Rev. 2	February 2, 2022	Add Sanitary Manhole

© Annis, O'Sullivan, Vollebek Ltd., 2021. "THIS PLAN IS PROTECTED BY COPYRIGHT"

ANNIS, O'SULLIVAN, VOLLEBEK LTD.
165 Bay Street
Embrun, Ont. KOA 1W1
Phone: (613) 443-3364
Email: Embrun@aovltd.com

Ontario Land Surveyors Job No. E-1150-21