

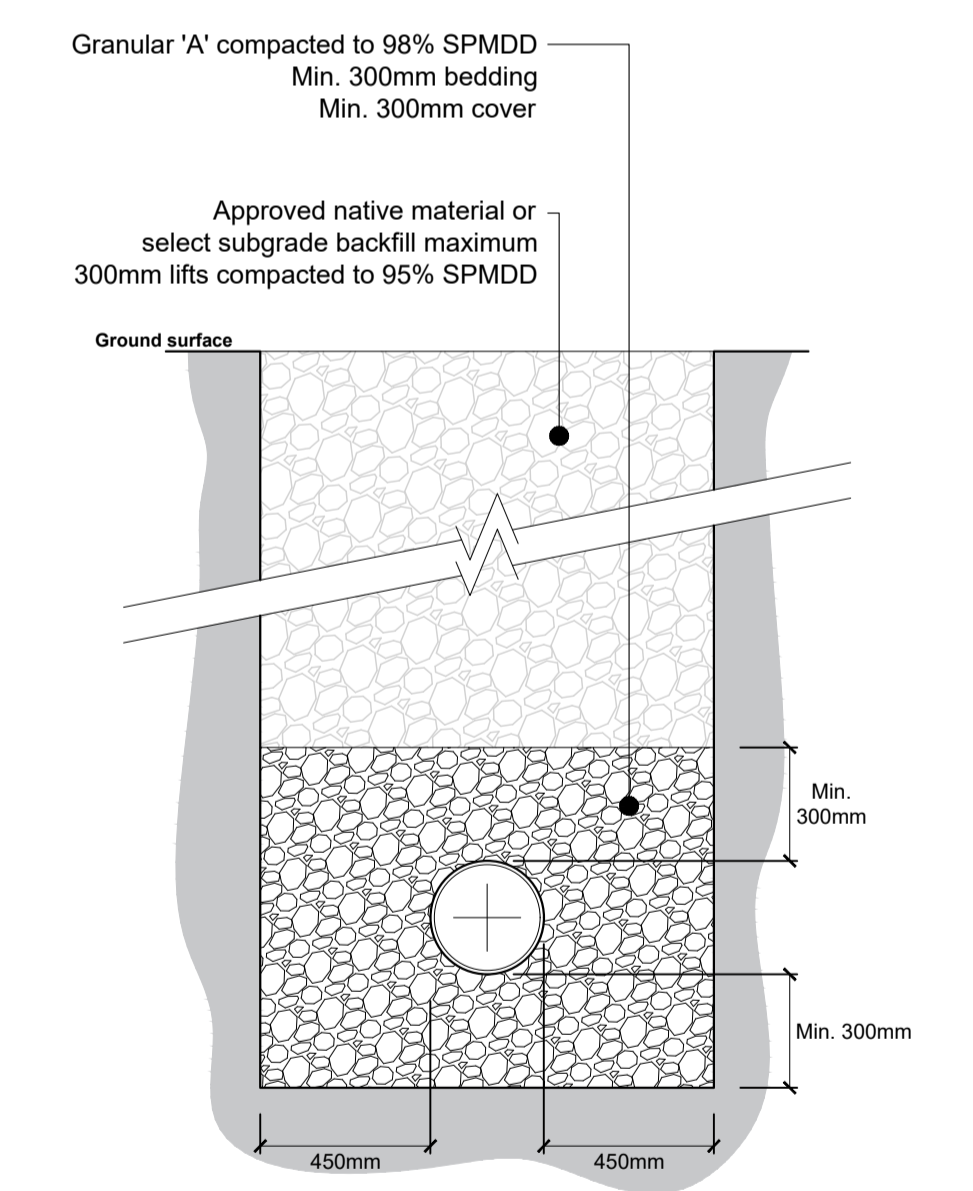
| LEGEND |                              |
|--------|------------------------------|
|        | PROPERTY LINE                |
|        | EXISTING BUILDING            |
|        | EXISTING SANITARY SEWER      |
|        | EXISTING STORM SEWER         |
|        | EXISTING WATERMAIN           |
|        | EXISTING SANITARY MANHOLE    |
|        | EXISTING STORM MANHOLE       |
|        | EXISTING CATCHBASIN          |
|        | EXISTING WATERMAIN VALVE     |
|        | EXISTING FIRE HYDRANT        |
|        | EXISTING OVERHEAD WIRES      |
|        | EXISTING UNDERGROUND UTILITY |
|        | EXISTING UNDERGROUND GASMAIN |
|        | NEW SANITARY SEWER           |
|        | NEW STORM SEWER              |
|        | NEW WATERMAIN                |
|        | NEW CATCHBASIN               |
|        | NEW CATCHBASIN MANHOLE       |
|        | NEW SANITARY MANHOLE         |
|        | NEW STORM MANHOLE            |
|        | NEW WATER VALVE              |
|        | NEW INLET CONTROL DEVICE     |
|        | NEW ROOF DRAIN               |
|        | NEW SCUPPER                  |
|        | NEW LIGHT DUTY ASPHALT       |
|        | NEW HEAVY DUTY ASPHALT       |
|        | NEW CONCRETE SIDEWALK        |

- GENERAL NOTES**
- DESIGN AND CONSTRUCTION IS TO BE IN ACCORDANCE WITH MOST RECENT ONTARIO BUILDING CODE.
  - THE CONTRACTOR IS RESPONSIBLE FOR CHECKING AND VERIFYING ALL DIMENSIONS WITH RESPECT TO SITE CONDITIONS AND ALL MATERIALS TO THE PROJECT. ANY DISCREPANCY SHALL BE REPORTED TO THE ENGINEER.
  - THIS DRAWING IS TO BE READ IN CONJUNCTION WITH ALL MATERIAL RELEVANT TO THE PROJECT.
  - ADDITIONAL DRAWINGS MAY BE ISSUED FOR CLARIFICATION TO ASSIST PROPER EXECUTION OF WORK. SUCH DRAWINGS WILL HAVE THE SAME MEANING AND INTENT AS IF THEY WERE INCLUDED WITH THE CONTRACT DOCUMENTS.
  - CONTRACTOR MUST COMPLY WITH LOCAL BY-LAWS, ONTARIO OCCUPATIONAL HEALTH AND SAFETY ACT AND ALL REGULATIONS SET BY AUTHORITIES HAVING JURISDICTION. IN CASE OF CONFLICT OR DISCREPANCY, THE MORE STRINGENT REQUIREMENTS SHALL APPLY.
  - CONTRACTOR RESPONSIBLE FOR OBTAINING ALL REQUIRED UTILITY LOCATES, DAYLIGHTING, INSPECTIONS, PERMITS, AND APPROVALS, INCLUDING ALL ASSOCIATED COSTS. LOCATION OF EXISTING UTILITIES ARE APPROXIMATE ONLY AND BASED ON BEST AVAILABLE INFORMATION.

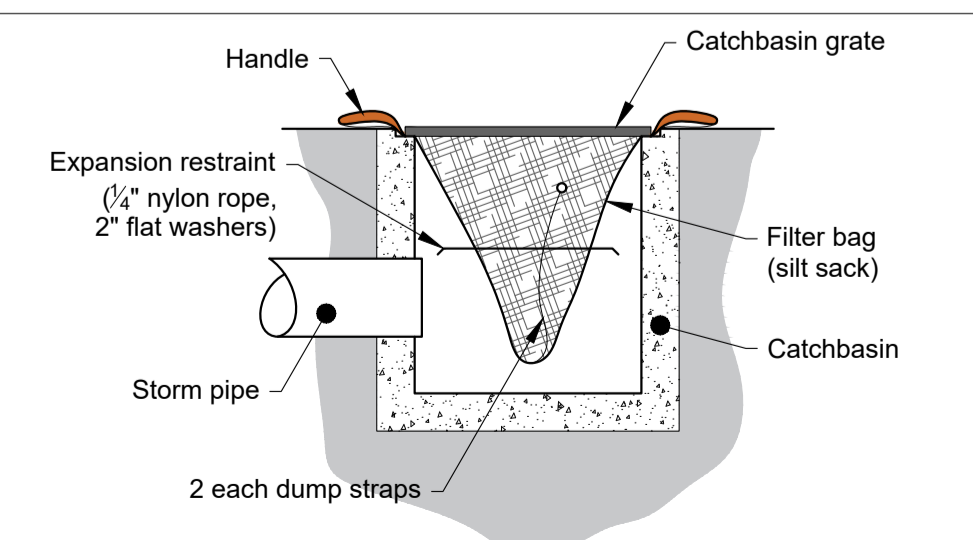
- EROSION AND SEDIMENT CONTROL NOTES**
- THE CONTRACTOR SHALL IMPLEMENT BEST MANAGEMENT PRACTICES TO PROVIDE FOR PROTECTION OF THE AREA DRAINAGE SYSTEM AND THE RECEIVING WATER COURSE, DURING CONSTRUCTION ACTIVITIES; THIS INCLUDES LIMITING THE AMOUNT OF EXPOSED SOIL, INSTALLING SILT FENCES AND OTHER EFFECTIVE SEDIMENT TRAPS, AND INSTALLING AND MAINTAINING MUD MATS FOR OUTGOING CONSTRUCTION TRAFFIC DURING CONSTRUCTION ACTIVITIES.
  - PREVENT SOIL LOSS DURING CONSTRUCTION (BY STORM WATER RUNOFF OR WIND EROSION).
  - PROTECT TOPSOIL BY STOCKPILING FOR REUSE.
  - PREVENT SEDIMENTATION OF STORM SEWERS AND RECEIVING STREAMS.
  - PREVENT AIR POLLUTION FROM DUST AND PARTICULATE MATTER.
  - ALL STORM MANHOLES AND CATCHBASIN MANHOLES TO HAVE 300mm SUMP; ALL CATCHBASINS TO HAVE 600mm SUMP.
  - INSTALL FILTER BAG INSERT IN ALL STORM MANHOLES AND CATCH BASINS IMPACTED DURING CONSTRUCTION, INCLUDING CATCH BASINS IN THE RIGHT OF WAY.
  - SEDIMENT AND EROSION CONTROL MEASURES MAY BE MODIFIED IN THE FIELD AT THE DISCRETION OF THE CITY OF OTTAWA INSPECTOR OR CONSERVATION AUTHORITY.
  - STORM WATER PUMPED INTO CITY SERVICE SHALL FLOW THROUGH A FILTER SOCK.
  - THE CONTRACTOR ACKNOWLEDGES THAT FAILURE TO IMPLEMENT APPROPRIATE EROSION AND SEDIMENTATION CONTROL MEASURES MAY BE SUBJECT TO PENALTIES IMPOSED BY ANY APPLICABLE REGULATORY AGENCY.

- DRAWING NOTES**
- CONNECT NEW WATER SERVICE TO EXISTING 305mm DUCTILE IRON WATERMAIN. APPROXIMATE TOP OF EXISTING WATERMAIN ELEVATION: 67.63. CONTRACTOR TO HYDROVAC TO CONFIRM OBVERT PRIOR TO CONSTRUCTION. WATER CONNECTIONS BY CITY: EXCAVATION, BACKFILLING AND REINSTATEMENT BY THE CONTRACTOR. CONTRACTOR TO COORDINATE WITH CITY OF OTTAWA FORCES.
  - SUPPLY AND INSTALL NEW 100mm Ø PVC DR18 WATER MAIN SERVICE. MINIMUM 2.4m COVER. PROVIDE HL40 THERMAL INSULATION IN ACCORDANCE WITH CITY OF OTTAWA STANDARD DETAIL W22 WHERE 2.4m COVER CANNOT BE MET. COORDINATE NEW WATER SERVICE CONNECTION WITH MECHANICAL PLANS.
  - SUPPLY AND INSTALL NEW WATERMAIN VERTICAL BENDS AND INSULATION TO CROSS UNDER EXISTING 375mm CONCRETE STORM SEWER IN ACCORDANCE WITH CITY OF OTTAWA STANDARD DETAIL W25.
  - CONNECT TO EXISTING 600mm CONCRETE SANITARY SEWER WITH NEW VERTICAL RISER IN ACCORDANCE WITH CITY OF OTTAWA STANDARD DETAIL S11. PROVIDE WATERTIGHT CONNECTION. APPROXIMATE CONNECTION INVERT: 65.52. CONTRACTOR TO CONFIRM EXISTING SANITARY SEWER INVERTS PRIOR TO CONSTRUCTION.
  - CONNECT TO EXISTING 375mm CONCRETE STORM SEWER WITH NEW VERTICAL RISE IN ACCORDANCE WITH CITY OF OTTAWA STANDARD DETAIL S11. PROVIDE WATERTIGHT CONNECTION. APPROXIMATE CONNECTION INVERT: 67.80. CONTRACTOR TO CONFIRM MUNICIPAL STORM SEWER INVERTS PRIOR TO CONSTRUCTION.
  - CONNECT SERVICES TO INTERIOR PLUMBING 1.0m FROM BUILDING FOUNDATION. PERIMETER FOUNDATION DRAIN TO BE CONNECTED TO NEW STORM SEWER SERVICE. REFER TO MECHANICAL AND ARCHITECTURAL PLANS. CONNECTION ELEVATIONS:
    - STORM INVERT: 68.15
    - SANITARY INVERT: 68.65
    - WATERMAIN OBVERT: 68.00
  - SUPPLY AND INSTALL BACKFLOW VALVES ON SANITARY AND STORM BUILDING CONNECTION AS PER CITY OF OTTAWA STANDARD DETAILS S14, AND ONE OF S14.1 OR S14.2.
  - INSTALL 3.0m LONG 100mm Ø PERFORATED SUBDRAIN WRAPPED IN GEOTEXTILE SOCK EXTENDING FROM CB/CBMH AT PAVEMENT SUBGRADE LEVEL. PROVIDE WATERTIGHT CONNECTION.
  - SUPPLY AND INSTALL WATTS RD-100 FLOW CONTROL ROOF DRAINS. MAXIMUM DISCHARGE 35.8 l/s TOTAL. REFER TO MECHANICAL FOR SPECIFIC WEIR SETTINGS.

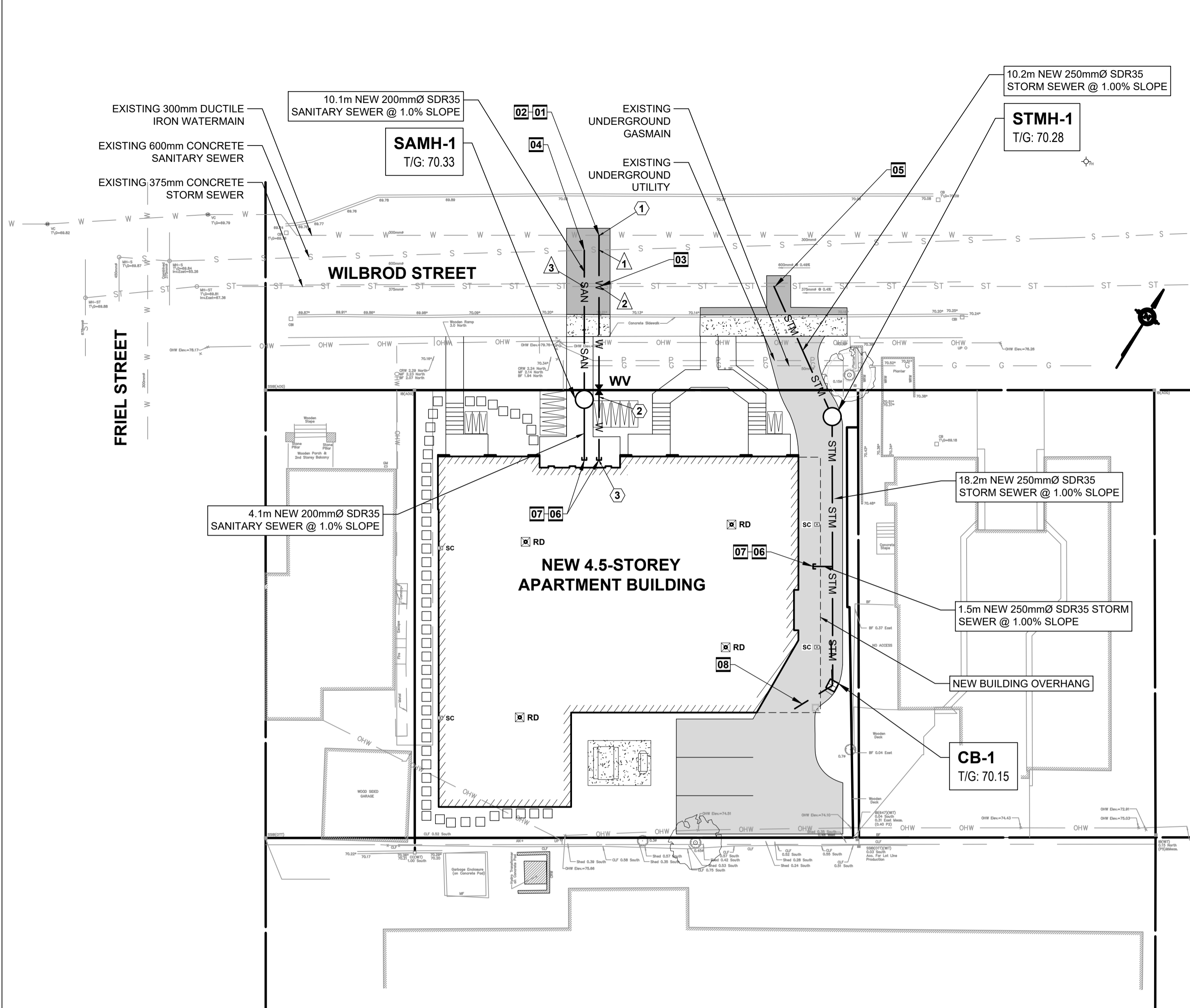
Note:  
1. Install new clay seals at 50m intervals as per City of Ottawa standard detail S8. Clay seal to be compacted to 95% SPMD



**1 Standard Trench Detail**  
Scale: As shown



**2 Catchbasin Filter Bag / Insert**  
Scale: Not to scale



**MANHOLE AND CATCHBASIN SCHEDULE**

| STRUCTURE ID | TOP OF FRAME ELEVATION (m) | PIPE INVERT ELEVATION (m) | STRUCTURE DIAMETER (mm) / OPSD No. | FRAME (OPSD / CITY OF OTTAWA STANDARD) |
|--------------|----------------------------|---------------------------|------------------------------------|--|
| SAMH-1       | 70.33                      | 68.61 SW / 68.59 NE       | 1200 / 701.010                     | S25 / S24                              |
| STMH-1       | 70.28                      | 68.00 NW / 68.03 SE       | 1200 / 701.010                     | S25 / S24.1                            |
| CB-1         | 70.15                      | 68.21 NW                  | 600 x 600 / 705.010                | S25 / S19                              |

**CROSSING TABLE**

| LOCATION | OVER / UNDER                              | INVERT | OBVERT | CLEARANCE (m) |
|----------|---|--------|--------|---------------|
| ①        | NEW WATERMAIN / EXISTING SANITARY SEWER   | 67.53  | 65.82  | 1.71          |
| ②        | EXISTING STORM SEWER / NEW WATERMAIN      | 67.70  | 67.20  | 0.50          |
| ③        | NEW SANITARY SEWER / EXISTING STORM SEWER | 68.52  | 68.18  | 0.34          |

**WATER SERVICE TABLE**

| ID | DESCRIPTION          | FINISHED GRADE (m) | T/O WATERMAIN (m) |
|----|----------------------|--------------------|-------------------|
| ①  | MUNICIPAL CONNECTION | 70.03              | 67.63             |
| ②  | VALVE BOX            | 70.33              | 67.93             |
| ③  | BUILDING CONNECTION  | 70.40              | 68.00             |

NOTE: PROVIDE MINIMUM 2.4m COVER OVER T/O WATERMAIN TO FINISHED GRADE. WHERE MINIMUM COVER CANNOT BE MET, PROVIDE THERMAL INSULATION HL40.

**Jp2g Consultants Inc.**  
ENGINEERS • PLANNERS • PROJECT MANAGERS  
1150 Morrison Drive, Suite 410, Ottawa, ONT.  
Phone: (613) 828-7800 Fax: (613) 828-2600  
929 No. 21-1062A



| No. | DESCRIPTION       | DATE       |
|-----|-------------------|------------|
| 1   | SITE PLAN CONTROL | 2022-03-09 |
|     | YYYY-MM-DD        |            |

client

project

**WILBROD APT. BUILDING**

326-330 WILBROD STREET,  
OTTAWA, ON.

seal

drawing title

SITE SERVICING, EROSION AND SEDIMENT CONTROL PLAN

|                   |           |                |                  |
|-------------------|-----------|----------------|------------------|
| scale<br>As shown | date      | drawn by<br>PH | checked by<br>DN |
| project number    | <b>C1</b> |                | drawing number   |

CONTRACTOR TO VERIFY ALL DIMENSIONS AND NOTIFY THE ARCHITECT OF ANY DISCREPANCIES BEFORE WORK COMMENCES. DO NOT SCALE DRAWINGS.

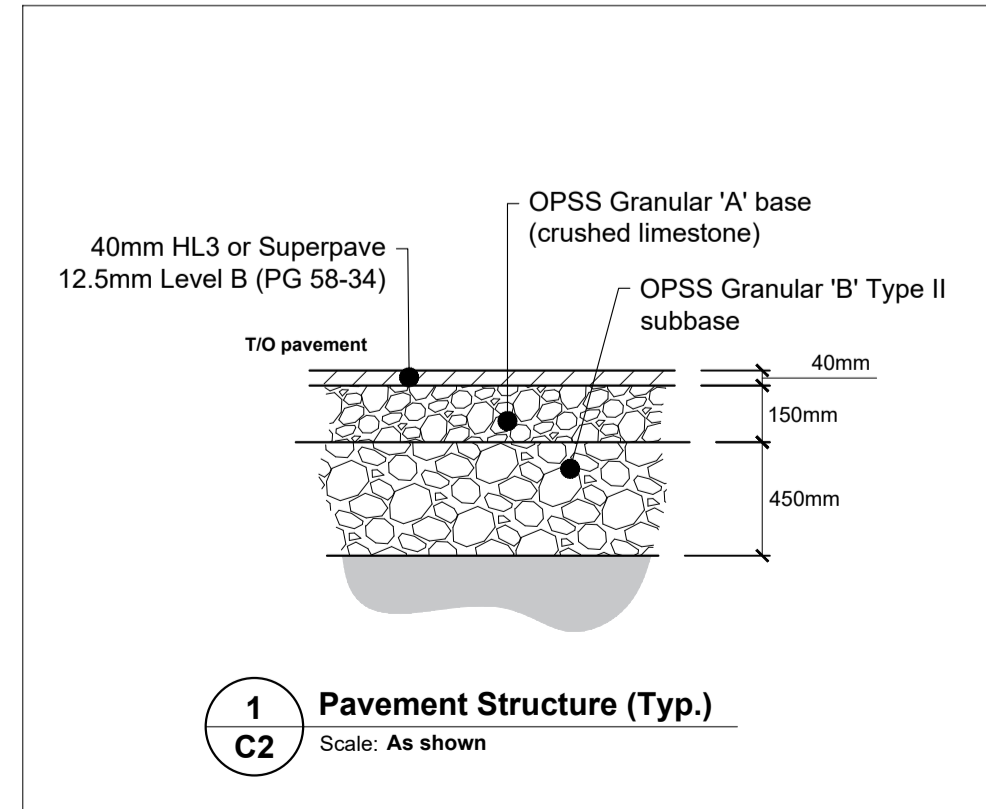
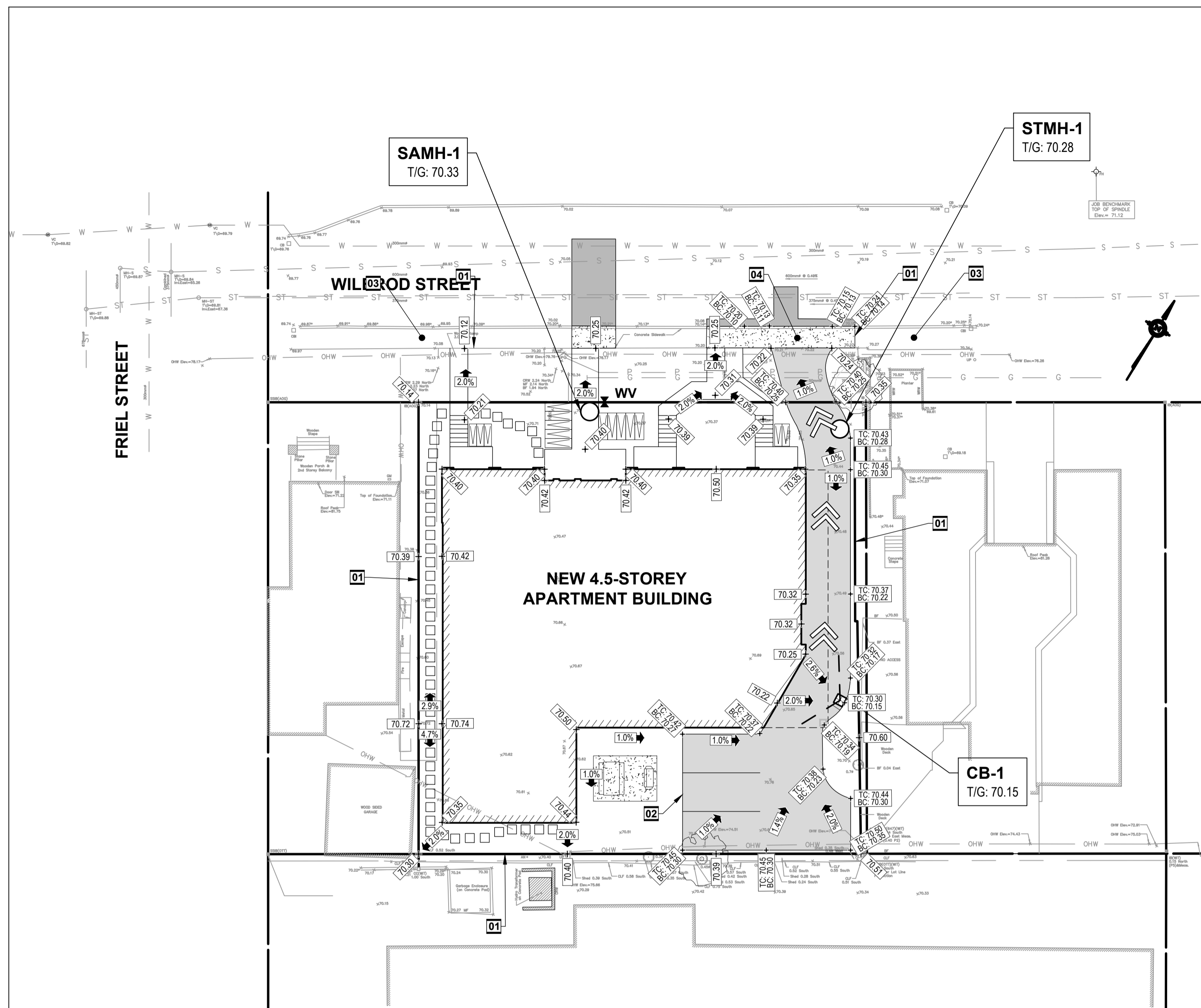
revision



| LEGEND |                              |
|--------|------------------------------|
|        | PROPERTY LINE                |
|        | EXISTING BUILDING            |
|        | EXISTING SANITARY SEWER      |
|        | EXISTING STORM SEWER         |
|        | EXISTING WATERMAIN           |
|        | EXISTING SANITARY MANHOLE    |
|        | EXISTING STORM MANHOLE       |
|        | EXISTING WATERMAIN VALVE     |
|        | EXISTING FIRE HYDRANT        |
|        | EXISTING OVERHEAD WIRES      |
|        | EXISTING UNDERGROUND UTILITY |
|        | EXISTING UNDERGROUND GASMAIN |
|        | NEW CATCHBASIN               |
|        | NEW CATCHBASIN MANHOLE       |
|        | NEW SANITARY MANHOLE         |
|        | NEW STORM MANHOLE            |
|        | NEW WATER VALVE              |
|        | NEW INLET CONTROL DEVICE     |
|        | NEW ROOF DRAIN               |
|        | NEW SCUPPER                  |
|        | NEW ASPHALT                  |
|        | NEW CONCRETE SIDEWALK        |
|        | NEW GRADE                    |
|        | NEW SLOPE                    |

| DRAWING NOTES |   |
|---------------|---|
| <b>01</b>     | MATCH EXISTING GRADES AT PROPERTY LINE AND LIMITS OF WORK.  |
| <b>02</b>     | NEW BARRIER CURB AS PER CITY OF OTTAWA STANDARD DETAIL SC1.1.   |
| <b>03</b>     | PROTECT EXISTING CONCRETE SIDEWALK DURING CONSTRUCTION.   |
| <b>04</b>     | NEW CONCRETE SIDEWALK COMPLETE WITH REINFORCING MESH 150mm X 150mm, MW9.1 X MW9.1 COMPLETE WITH EXPANSION JOINT PER CITY OF OTTAWA STANDARD DETAIL SC5. |

| GENERAL NOTES |   |
|---------------|---|
| 1.            | DESIGN AND CONSTRUCTION IS TO BE IN ACCORDANCE WITH MOST RECENT ONTARIO BUILDING CODE.  |
| 2.            | THE CONTRACTOR IS RESPONSIBLE FOR CHECKING AND VERIFYING ALL DIMENSIONS WITH RESPECT TO SITE CONDITIONS AND ALL MATERIALS TO THE PROJECT. ANY DISCREPANCY SHALL BE REPORTED TO THE ENGINEER.  |
| 3.            | THIS DRAWING IS TO BE READ IN CONJUNCTION WITH ALL MATERIAL RELEVANT TO THE PROJECT.  |
| 4.            | ADDITIONAL DRAWINGS MAY BE ISSUED FOR CLARIFICATION TO ASSIST PROPER EXECUTION OF WORK. SUCH DRAWINGS WILL HAVE THE SAME MEANING AND INTENT AS IF THEY WERE INCLUDED WITH THE CONTRACT DOCUMENTS.   |
| 5.            | CONTRACTOR MUST COMPLY WITH LOCAL BY-LAWS, ONTARIO OCCUPATIONAL HEALTH AND SAFETY ACT AND ALL REGULATIONS SET BY AUTHORITIES HAVING JURISDICTION. IN CASE OF CONFLICT OR DISCREPANCY, THE MORE STRINGENT REQUIREMENTS SHALL APPLY.                |
| 6.            | CONTRACTOR RESPONSIBLE FOR OBTAINING ALL REQUIRED UTILITY LOCATES, DAYLIGHTING, INSPECTIONS, PERMITS, AND APPROVALS, INCLUDING ALL ASSOCIATED COSTS. LOCATION OF EXISTING UTILITIES ARE APPROXIMATE ONLY AND BASED ON BEST AVAILABLE INFORMATION. |



**Jp2g Consultants Inc.**  
ENGINEERS • PLANNERS • PROJECT MANAGERS  
1150 Morrison Drive, Suite 410, Ottawa, ONT.  
Phone: (613) 828-7800 Fax: (613) 828-2600  
Jp2g No.: 21-1062A



| No. | DESCRIPTION       | DATE       |
|-----|-------------------|------------|
| 1   | SITE PLAN CONTROL | 2022-03-09 |
|     |                   | YYYY-MM-DD |

client

project  
**WILBROD APT. BUILDING**

326-330 WILBROD STREET,  
OTTAWA, ON.

seal

| drawing title   |                |
|---|----------------|
| GRADING AND DRAINAGE PLAN   |                |
| scale   | drawn by       |
| As shown  | PH             |
| date  | checked by     |
|   | DN             |
| project number  | drawing number |
|   | <b>C2</b>      |
| CONTRACTOR TO VERIFY ALL DIMENSIONS AND NOTIFY THE ARCHITECT OF ANY DISCREPANCIES BEFORE WORK COMMENCES. DO NOT SCALE DRAWINGS. |                |
|   | revision       |