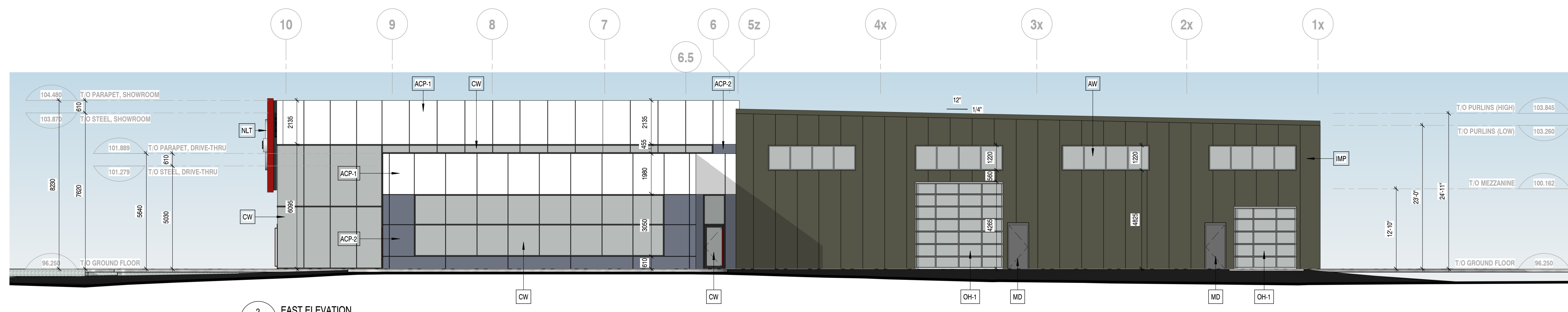


1 SOUTH ELEVATION  
A030 1 : 125

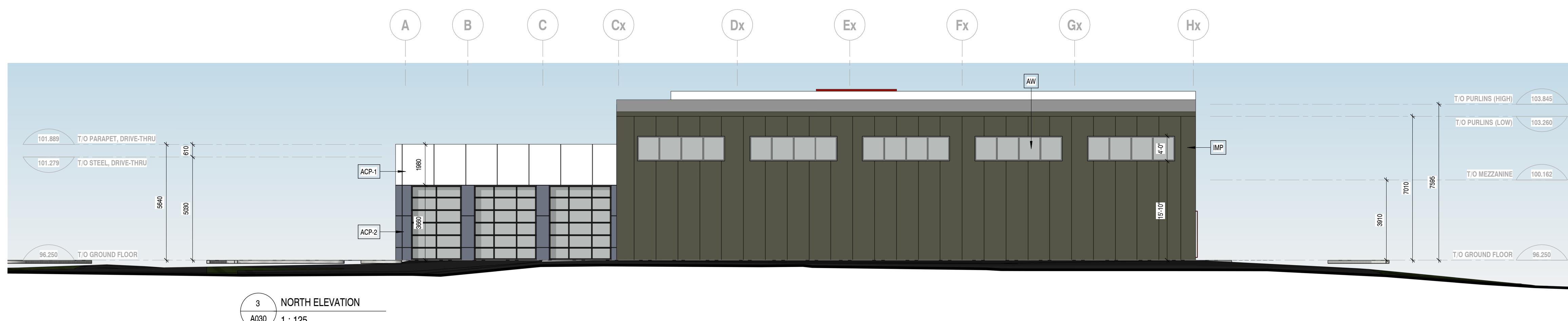
Elevation Notes	
ACP-1	Aluminum Composite Panel Cladding; Colour - Silver
ACP-2	Aluminum Composite Panel Cladding; Colour - Nissan Grey
AW	Coloured Anodized Aluminum Window; Clear Low-E Glass with Acid Etched Bird-Safe Pattern on Surface 1
CW	Anodized Aluminum Curtain Wall; Coloured Clipped Horizontal & Perimeter Mullions; Silicone Joint Vertical Mullions; Clear Low-E Glass with Acid Etched Bird-Safe Pattern on Surface 1
DS	Dealer Signage, by owner
IMP	Insulated Metal Wall Panels, installed vertically; Colour - Dark Grey
MD	Painted Hollow-Metal Door & Steel Frame
NLT	Nissan Logo Tablet Signage, by Owner
OH-1	Glazed Aluminum Sectional Overhead Door; Clear Sealed Insulated Glass, Powder Coated Rails and Sides, colour to match ACP-2
OH-2	Sectional Metal Overhead Door, Colour to match ACP-2
SP	Glass Curtain Wall Spandrel Panel, Colour to match ACP-2

REVISIONS		
No.	DATE	DESCRIPTION
0	17 Jan 2022	Issued for Client Review

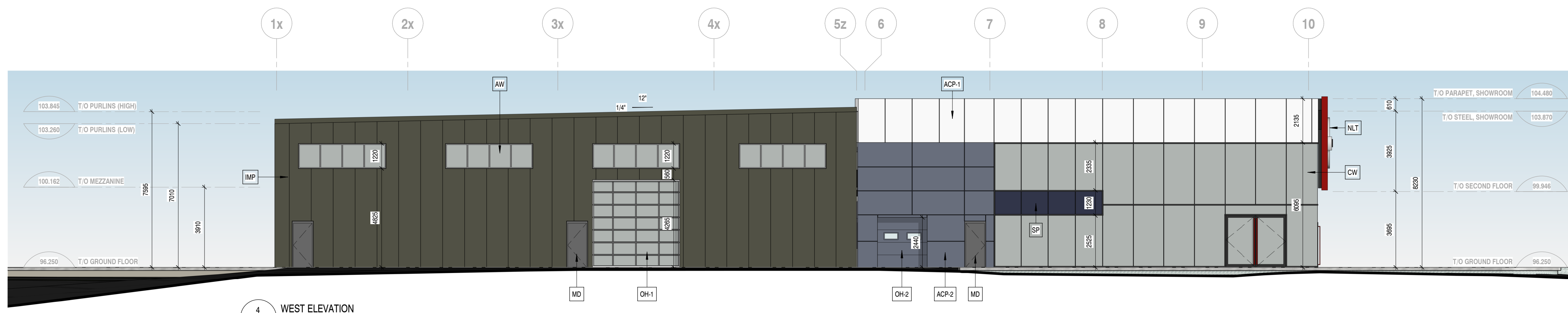
It is the responsibility of the appropriate contractor to check and verify all dimensions on site and report all errors and/or omissions to the Architect. All contractors must comply with all pertinent codes and by-laws. Do not scale drawings. This drawing may not be used for construction until signed by KWC Architects Inc. and shall not be used without the Architect's consent.



2 EAST ELEVATION  
A030 1 : 125



3 NORTH ELEVATION  
A030 1 : 125



4 WEST ELEVATION  
A030 1 : 125

architect's seal

**KWC ARCHITECTS INC.**  
 383 Parkdale Avenue, Suite 201  
 Ottawa, Ontario, Canada, K1V 4R4  
 Phone: 613 238-2217  
 Fax: 613 238-6595  
 E-Mail: kwc@kwc-arch.com

**BBS**  
 BUILDING A REPUTATION ON EXCELLENCE  
 BBS CONSTRUCTION (ONTARIO) LTD.  
 1805 WOODWARD DRIVE,  
 OTTAWA, ON. K2C 0P9 CANADA  
 TEL: (613) 226-8830 FAX: (613) 226-7709  
 www.bbsconstruction.ca

owner  
**ZENA INVESTMENT CORPORATION**

project  
**MYERS BARRHAVEN NISSAN AUTOMOBILE DEALERSHIP**  
4149 Strandherd Drive, Ottawa, ON.

drawing title  
**BUILDING ELEVATIONS SPC**

project no.	<b>kwc 2216</b>	drawing no.	<b>A030</b>
scale	<b>1 : 125</b>	drawn by	<b>AK</b>
date	<b>14 January 2022</b>		