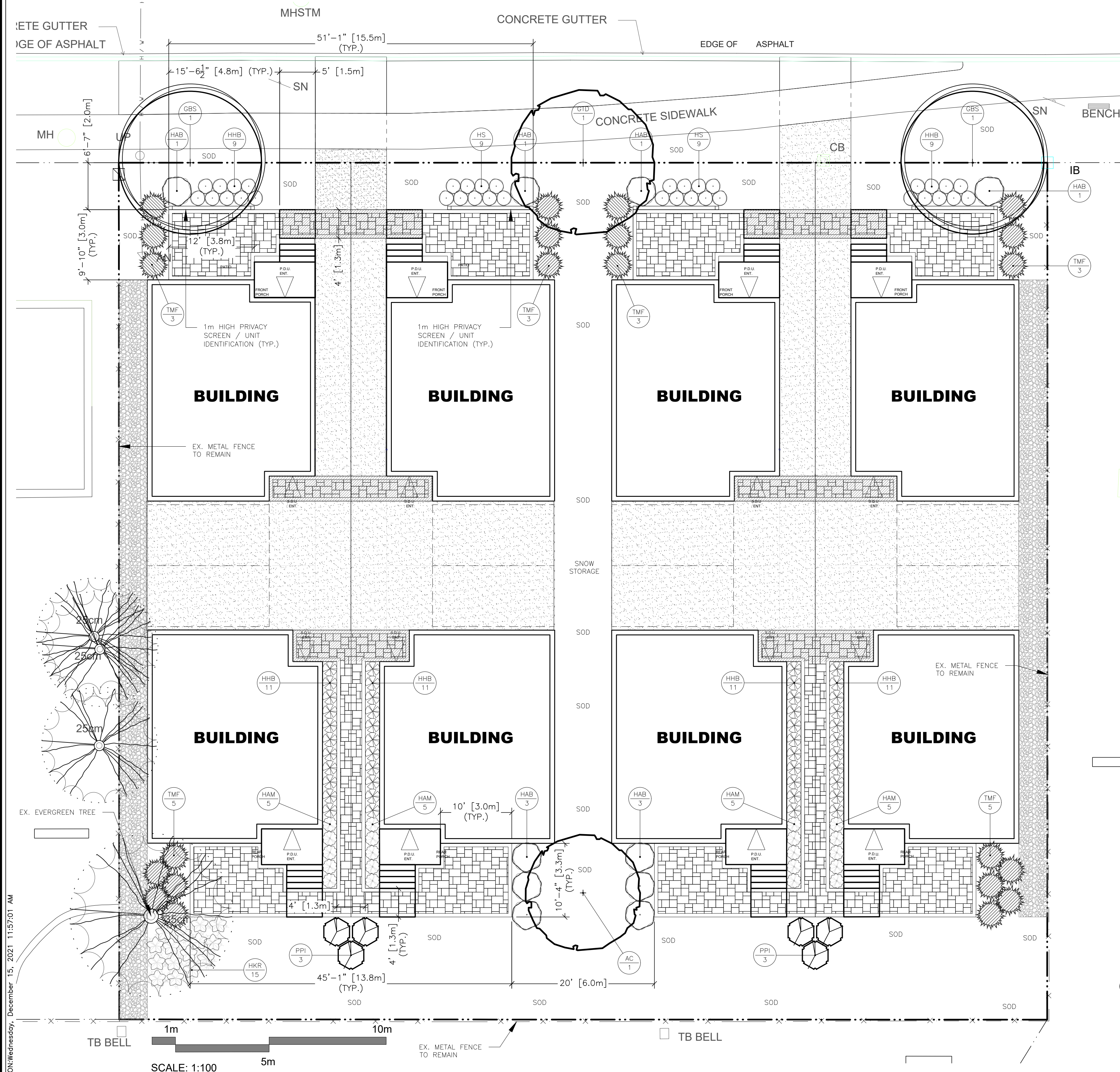


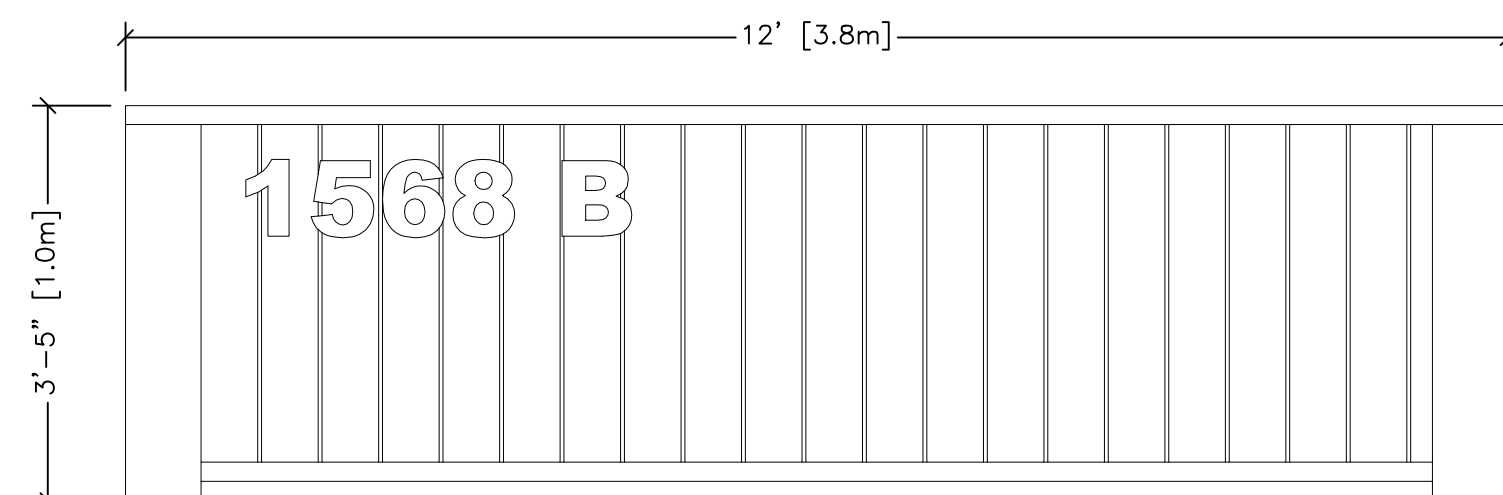
TOTAL FRONT YARD AREA TO PL: 210.7m²
TOTAL FRONT YARD SOFT LANDSCAPE AREA TO PL: 92.9m² (44%)



2021-29 MEADOWBROOK ROAD 2021-12-15:DWG ISSUED ON Wednesday, December 15, 2021 11:57:01 AM

Trees/Shrubs/Vines					
Key	Qty	Botanical Name	Common Name	Size	Cdn
AC	1	Amelanchier canadensis	Serviceberry	50 mm cal	WB
GBS	2	Ginkgo biloba 'Princeton Sentry'	Princeton Sentry Ginkgo Tree	60 mm cal	WB
GTD	1	Gleditsia triacanthos 'Draves'	Streetkeeper Honeylocust	60 mm cal.	WB
HAB	10	Hydrangea arborescens 'Abetwo'	Incrediball Hydrangea	60cm ht	3gal pot
PPI	6	Picea pungens 'iseli fastigiata'	Columnar Iseli Blue Spruce'	150 cm ht	BB
TMF	22	Taxus x media 'Fairview'	Fairview Spreading Yew	60 cm spr	7 gal pot

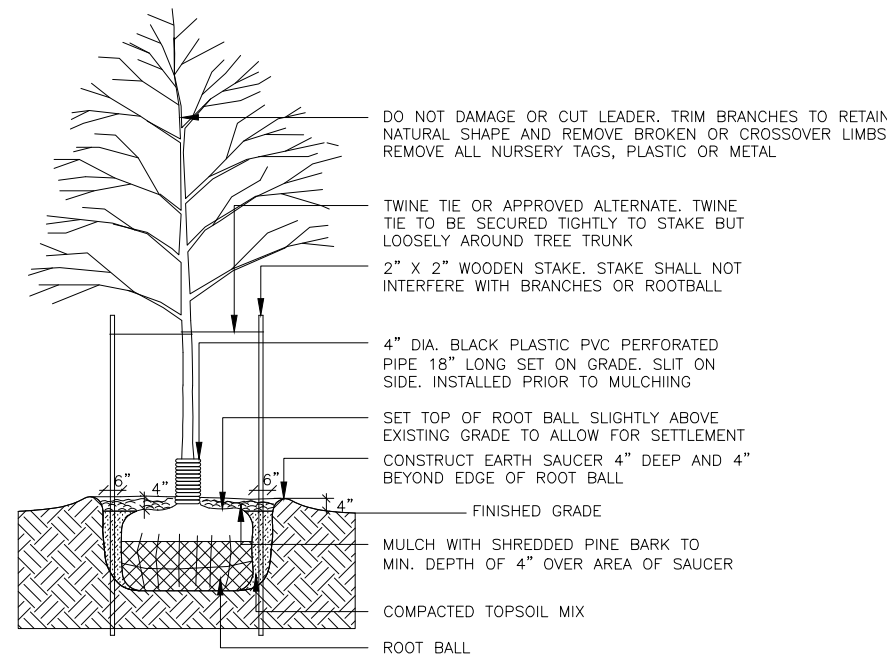
Perennials/Grasses/Groundcovers					
Key	No	Botanical Name	Common Name	Size	Cdn
HAM	20	Hosta August Moon	August Moon Hosta	1 gal pot	plant 24"o.c.
HHB	44	Hosta 'Halcyon Blue'	Hosta	1 gal pot	plant 24"o.c.
HKR	15	Hosta Kross Regal	Krossa Regal Hosta	1 gal pot	plant 36" o.c
HS	18	Hemerocallis x 'Stella D'oro'	Stella D'oro Hybrid Daylily	1 gal pot	plant 18" o.c.



PATIO PRIVACY SCREEN / UNIT IDENTIFICATION
SCALE 1:20

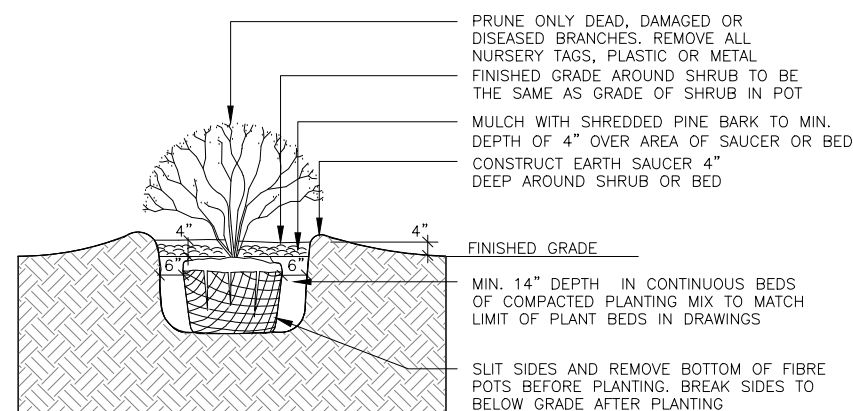
General Notes

1. This drawing to be read in conjunction with architectural drawings and other consultant drawings. Specifically refer to tree conservation plan prepared by Dendron Forestry Services.
2. It is the responsibility of the appropriate contractor or official to report any errors, omissions or discrepancies in this plan with actual conditions or other consultant' plans prior to commencing work. The Landscape Architect is not responsible for subsurface conditions.
3. It is the responsibility of the appropriate contractor to obtain all required permits and to obey all local bylaws and regulations.
4. It is the responsibility of the appropriate contractor to determine the location of all underground services before the start to include: telephone cables, cable television, hydro cables, lights and power lines, weeping tiles, storm and sanitary sewers, natural gas lines, irrigation lines, etc.
5. The contractor is to reinstate all areas and items damaged as a result of construction activities.
6. Plant substitutions will not be accepted without prior approval of the Landscape Architect in writing.
7. Positive drainage to be maintained at all times away from the building. This drawing not to be used for grading, refer to engineer's drawing for grading.
8. Base information for this drawing was prepared using the survey plan prepared by Stantec dated 2021.



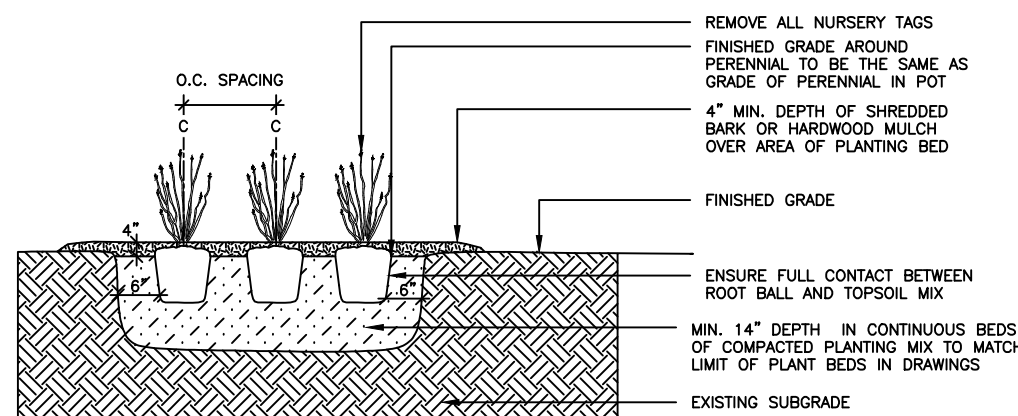
- SPECIFICATIONS:
1. TOPSOIL MIX. SEE SPEC.
 2. IF ROOT BALL HAS WIRE BASKET, CUT BASKET IN FOUR PLACES AND FOLD DOWN 8" INTO PLANTING PIT.
 3. DO NOT STAKE THROUGH ROOT BALL.
 4. WATER THOROUGHLY AFTER INSTALLATION.
 5. CUT AND REMOVE TOP 1/3 OF ROPE AND BURLAP FROM ROOT BALL.
 6. REMOVE STAKES AND TWINE TIES TWO YEARS AFTER INSTALLATION.
 7. SCARIFY SUBGRADE PIT BOTTOM AND SIDES TO MIN. 6".
 8. DOUBLE STAKE TREE WITH ORIENTATION N.W. TO S.E.

DECIDUOUS TREE PLANTING n.t.s.



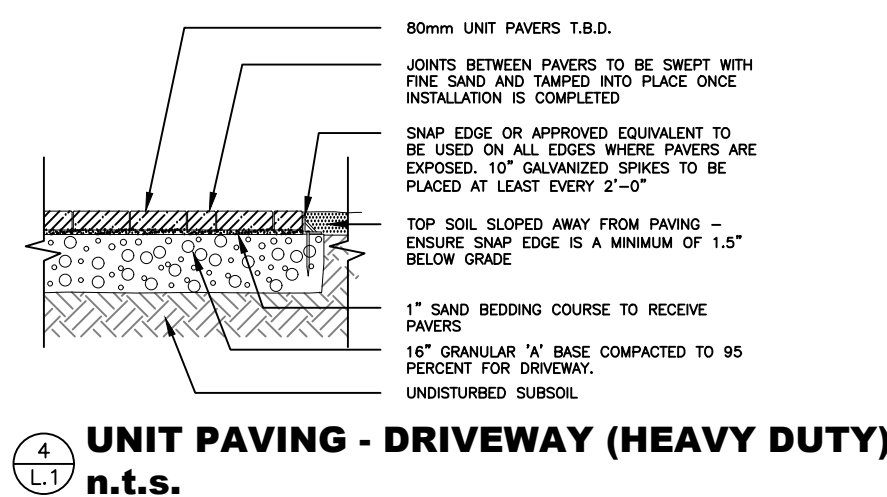
- SPECIFICATIONS:
1. TOPSOIL MIX. SEE SPEC.
 2. SYNTHETIC BURLAP IS NOT ALLOWED.
 3. WATER THOROUGHLY AFTER INSTALLATION.
 4. CUT & REMOVE TOP 1/3 OF ROPE AND BURLAP FROM ROOT BALL. IF CONTAINER IS NON-ORGANIC REMOVE COMPLETELY.
 5. SCARIFY SUBGRADE PIT BOTTOM AND SIDES TO MIN. 6".

SHRUB PLANTING n.t.s.

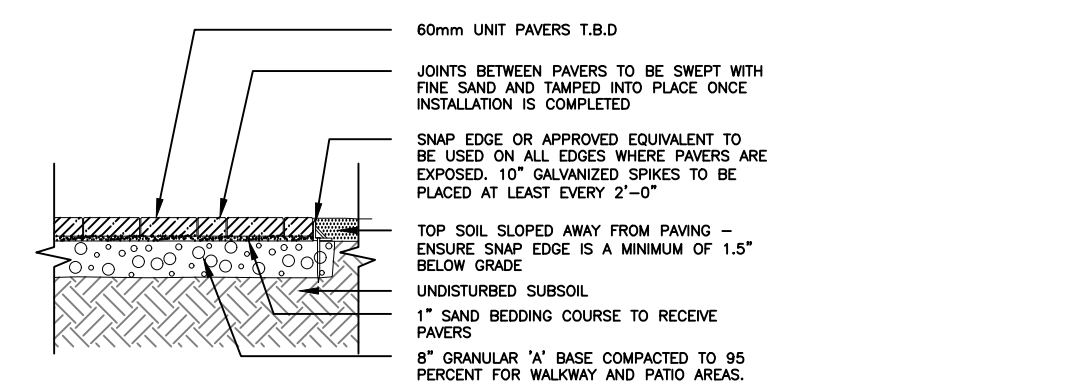


- SPECIFICATIONS:
1. TOPSOIL MIX. SEE SPEC.
 2. WATER THOROUGHLY AFTER INSTALLATION.
 3. IF CONTAINER IS NON-ORGANIC REMOVE COMPLETELY.

PERENNIAL & ORNAMENTAL GRASS PLANTING n.t.s.



UNIT PAVING - DRIVEWAY (HEAVY DUTY) n.t.s.



UNIT PAVING - PATIO & WALKWAYS (LIGHT DUTY) n.t.s.

PRELIMINARY FOR DISCUSSION

LEGEND

- EXISTING EVERGREEN TREE
- PROPOSED EVERGREEN TREE
- PROPOSED DECIDUOUS TREE
- PROPOSED SHRUBS
- PROPOSED PERENNIALS
- ASPHALT DRIVEWAY
- RIVER ROCK
- LIGHT DUTY INTERLOCKING PAVERS
- HEAVY DUTY INTERLOCKING PAVERS
- EXISTING FENCE
- PROPERTY LINE

1	Dec 06/21	Issued for review
2	Dec 15/21	Issued for review

No.	Date	Revision note
-----	------	---------------

John K. Szczepaniak

LANDSCAPE ARCHITECT

BARONIA

tel: (613) 731-2777 fax: (613) 731-6989
e-mail: jszla@rogers.com



1568 Meadowbrook Road

Ottawa, Ontario

Landscape Plan

CHK: JKS
DRW: EK
DATE: November 19, 2021
ID: 2021-29
SCALE: 1:100



L1