

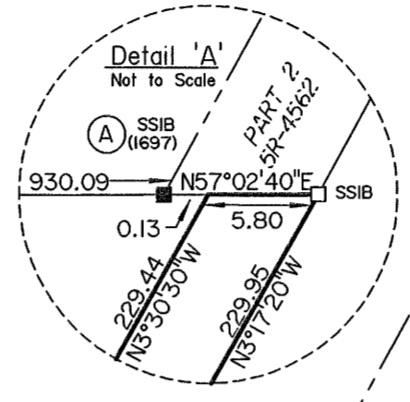
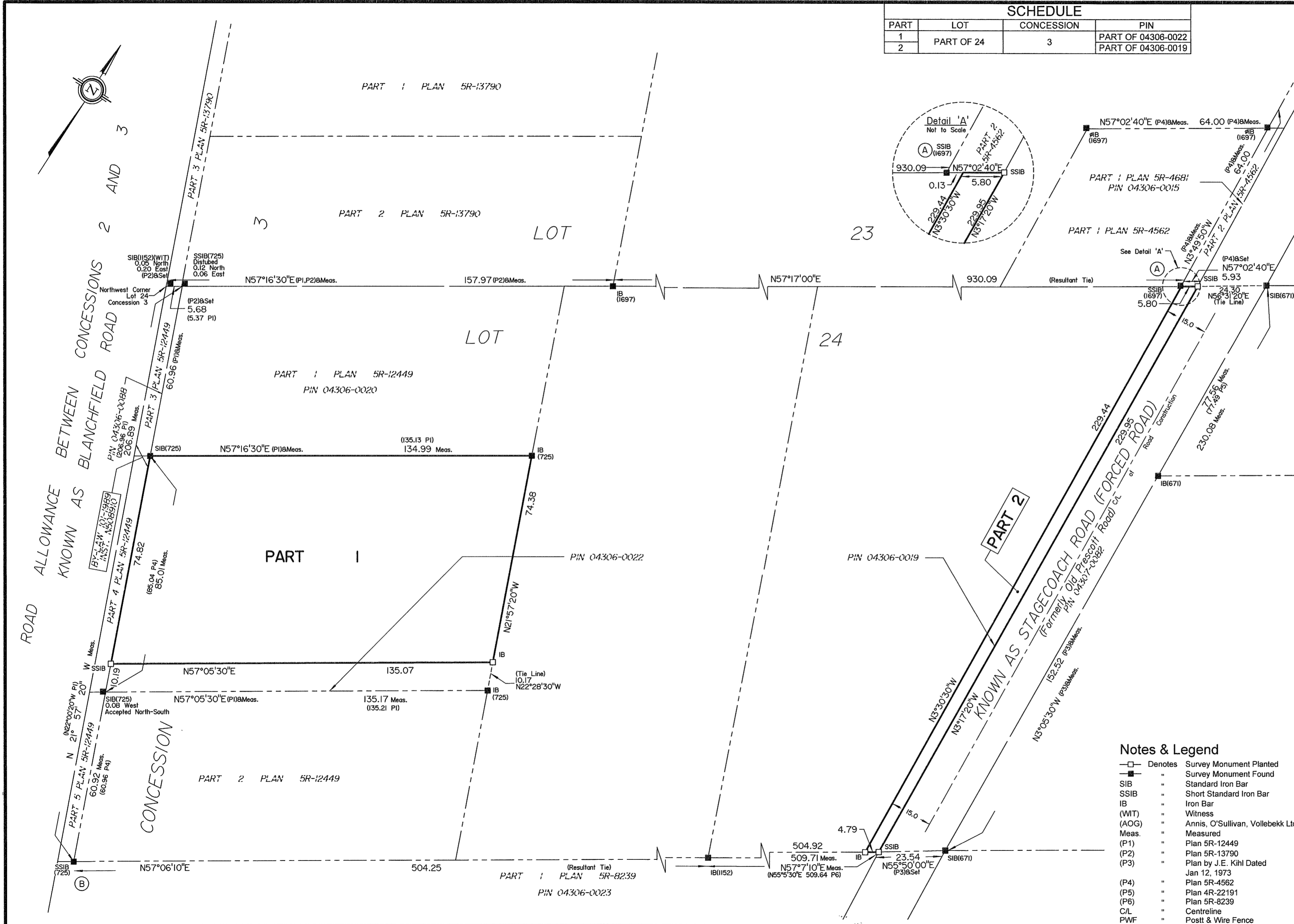
SCHEDULE			
PART	LOT	CONCESSION	PIN
1	PART OF 24	3	PART OF 04306-0022
2			PART OF 04306-0019

I REQUIRE THIS PLAN TO BE DEPOSITED UNDER THE LAND TITLES ACT.  
 DATE: August 24, 2021

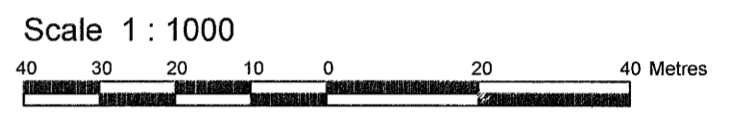
*Tyler J. Allison*  
 TYLER J. ALLISON  
 ONTARIO LAND SURVEYOR

**PLAN 4R-33953**  
 RECEIVED AND DEPOSITED  
 DATE: August 25, 2021

*[Signature]*  
 REPRESENTATIVE FOR THE LAND REGISTRAR FOR THE LAND TITLES DIVISION OF OTTAWA-CARLETON NO. 4.



PLAN OF SURVEY OF  
**PART OF LOT 24  
 CONCESSION 3  
 (Geographic Township of Osgoode)  
 CITY OF OTTAWA**  
 Surveyed by Annis, O'Sullivan, Vollebakk Ltd.



**Metric**  
 DISTANCES AND COORDINATES SHOWN ON THIS PLAN ARE IN METRES AND CAN BE CONVERTED TO FEET BY DIVIDING BY 0.3048.

**Surveyor's Certificate**  
 I CERTIFY THAT:  
 1. This survey and plan are correct and in accordance with the Surveys Act, the Surveyors Act, the Land Titles Act and the regulations made under them.  
 2. The survey was completed on August 10, 2021.

August 24, 2021 Date  
*Tyler J. Allison*  
 Tyler J. Allison  
 Ontario Land Surveyor

Distances shown on this plan are ground distances and can be converted to grid distances by multiplying by the combined scale factor of 0.99995.

Bearings are grid, derived from Can-Net 2016 Real Time Network GPS observations on points A and B and are referred to the Central Meridian of MTM Zone 9 NAD-83 (CSRS) (2010.0).

For bearing comparisons, a rotation of 0°17'10" counter-clockwise was applied to bearings on plan (P4).

Coordinates are derived from Can-Net 2016 Real Time Network GPS observations and are referred to the Central Meridian of MTM Zone 9 NAD-83 (CSRS) (2010.0).

Coordinate values are to urban accuracy in accordance with O. Reg. 216/10.

. Point A Northing 5005190.42 Easting 378131.65  
 . Point B Northing 5004413.54 Easting 377298.41

Caution: Coordinates cannot, in themselves, be used to re-establish corners or boundaries shown on this plan.

**Notes & Legend**

- Denotes Survey Monument Planted
- " Survey Monument Found
- SIB " Standard Iron Bar
- SSIB " Short Standard Iron Bar
- IB " Iron Bar
- (WIT) " Witness
- (AOG) " Annis, O'Sullivan, Vollebakk Ltd.
- Meas. " Measured
- (P1) " Plan 5R-12449
- (P2) " Plan 5R-13790
- (P3) " Plan by J.E. Kihl Dated Jan 12, 1973
- (P4) " Plan 5R-4562
- (P5) " Plan 4R-22191
- (P6) " Plan 5R-8239
- C/L " Centreline
- PWF " Post & Wire Fence

**ANNIS, O'SULLIVAN, VOLLEBEKK LTD.**  
 165 Bay Street  
 Embrun, Ont. K0A 1W1  
 Phone: (613) 443-3364  
 Email: Embrun@aovltd.com

Ontario Land Surveyors Job No. E-1111-21