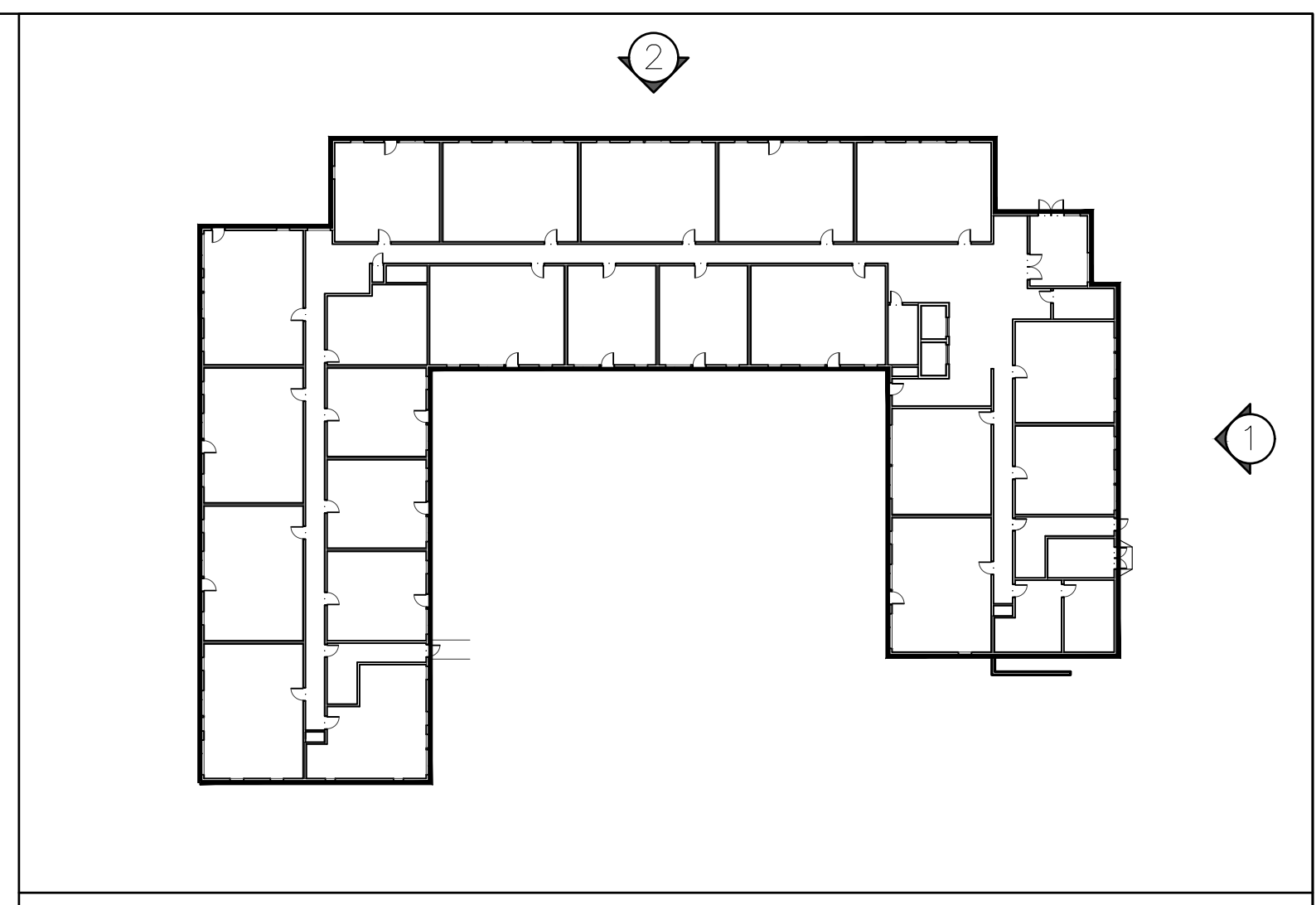




1 EAST BUILDING ELEVATION  
1:100



KEY PLAN NOT TO SCALE

**MATERIAL LEGEND**

- MS MS MS - PRE-FINISHED METAL SIDING. PROFILE, COLOUR & GAUGE TBD.
- BV BV - BRICK VENEER. MANUFACTURER, SIZE & COLOUR TBD.
- CB CB - CEMENT BOARD. (MANUFACTURER, SIZE, HUE TBD) COLOUR: ORANGE

\*ARROW ORIENTATION REFERS TO DIRECTION OF SIDING



2 NORTH BUILDING ELEVATION  
1:100

**GENERAL NOTES**  
IT IS THE RESPONSIBILITY OF THE CONTRACTOR TO VERIFY ALL DIMENSIONS ON SITE AND REPORT ANY ERRORS AND OMISSIONS TO THE ARCHITECT. ALL CONTRACTORS MUST COMPLY WITH ALL PERTINENT CODES AND BY-LAWS. DO NOT SCALE DRAWINGS. THESE DRAWINGS MAY NOT BE USED FOR CONSTRUCTION UNTIL SIGNED. THIS DRAWING IS THE EXCLUSIVE PROPERTY OF COLIZZA BRUNI ARCHITECTURE INCORPORATED. COPYRIGHT RESERVED.

NO	REV DATE	REV DESCRIPTION
1	OCT 20, 2021	ISSUED FOR SITE PLAN CONTROL

PROJECT NAME  
**1104 HALTON -  
86 UNIT APARTMENT  
BUILDING**  
OTTAWA, ON

DRAWING TITLE  
**NORTH  
& EAST  
ELEVATIONS**

SCALE  
AS NOTED  
DRAWN BY  
JD  
DATE  
10/20/21  
PROJECT NO.  
03020

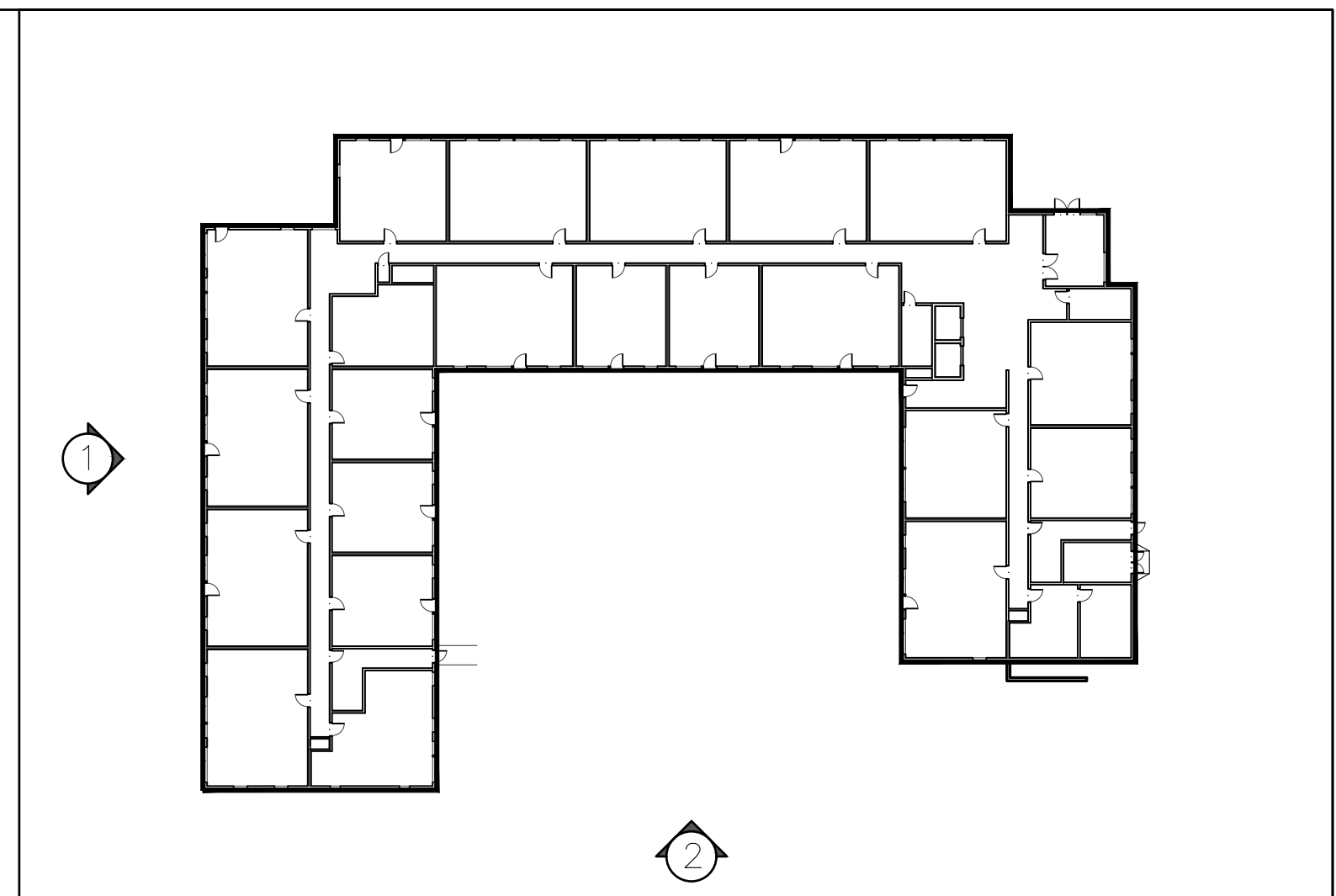
DRAWING NO.  
**A200**

**COLIZZA BRUNI**  
architecture

76 CHAMBERLAIN AVE • OTTAWA • ONTARIO • K1S 1V9  
T 613.236.2944 • F 613.236.6777 • www.colizzabruni.com



1 WEST BUILDING ELEVATION  
1:100



KEY PLAN NOT TO SCALE

**MATERIAL LEGEND**

- MS MS<sup>n</sup> MS - PRE-FINISHED METAL SIDING. PROFILE, COLOUR & GAUGE TBD.
- BV BV - BRICK VENEER. MANUFACTURER, SIZE & COLOUR TBD.
- CB CB - CEMENT BOARD. (MANUFACTURER, SIZE, HUE TBD) COLOUR: ORANGE

\*ARROW ORIENTATION REFERS TO DIRECTION OF SIDING



2 SOUTH BUILDING ELEVATION  
1:100

**GENERAL NOTES**

IT IS THE RESPONSIBILITY OF THE CONTRACTOR TO VERIFY ALL DIMENSIONS ON SITE AND REPORT ANY ERRORS AND OMISSIONS TO THE ARCHITECT. ALL CONTRACTORS MUST COMPLY WITH ALL PERTINENT CODES AND BY-LAWS. DO NOT SCALE DRAWINGS. THESE DRAWINGS MAY NOT BE USED FOR CONSTRUCTION UNTIL SIGNED. THIS DRAWING IS THE EXCLUSIVE PROPERTY OF COLIZZA BRUNI ARCHITECTURE INCORPORATED. COPYRIGHT RESERVED.

NO	REV DATE	REV DESCRIPTION
1	OCT 20, 2021	ISSUED FOR SITE PLAN CONTROL

PROJECT NAME  
**1104 HALTON -  
86 UNIT APARTMENT  
BUILDING**  
OTTAWA, ON

DRAWING TITLE  
**SOUTH  
& WEST  
ELEVATIONS**

SCALE  
AS NOTED  
DRAWN BY  
JD  
DATE  
10/20/21  
PROJECT NO.  
03020

DRAWING NO.  
**A201**

**COLIZZA BRUNI**  
architecture

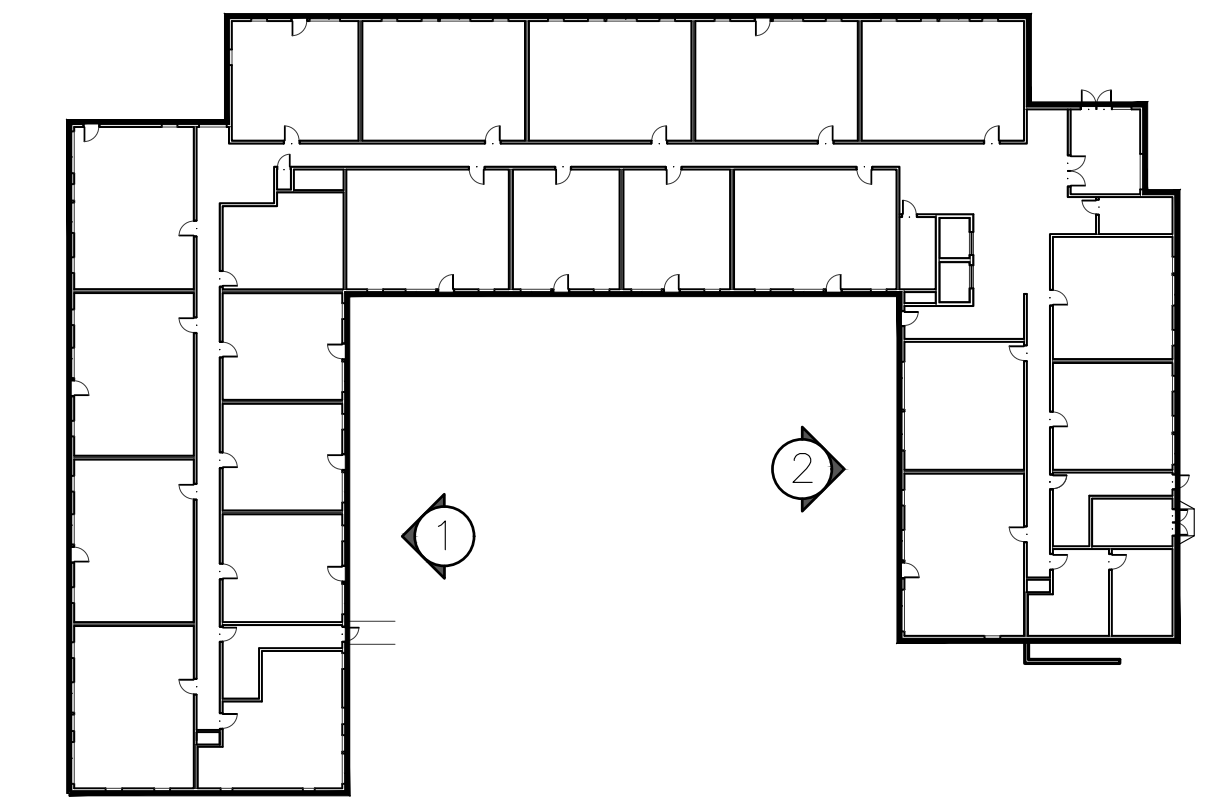
76 CHAMBERLAIN AVE • OTTAWA • ONTARIO • K1S 1V9  
T 613.236.2944 • F 613.236.6777 • www.colizzabruni.com



1 WEST COURTYARD ELEVATION  
1:100



2 EAST COURTYARD ELEVATION  
1:100



KEY PLAN

NOT TO SCALE

MATERIAL LEGEND

- MS - PRE-FINISHED METAL SIDING, PROFILE, COLOUR & GAUGE TBD.
  - BV - BRICK VENEER, MANUFACTURER, SIZE & COLOUR TBD.
  - CB - CEMENT BOARD, (MANUFACTURER, SIZE, HUE TBD) COLOUR: ORANGE
- \*ARROW ORIENTATION REFERS TO DIRECTION OF SIDING

**GENERAL NOTES**  
IT IS THE RESPONSIBILITY OF THE CONTRACTOR TO VERIFY ALL DIMENSIONS ON SITE AND REPORT ANY ERRORS AND OMISSIONS TO THE ARCHITECT. ALL CONTRACTORS MUST COMPLY WITH ALL PERTINENT CODES AND BY-LAWS. DO NOT SCALE DRAWINGS. THESE DRAWINGS MAY NOT BE USED FOR CONSTRUCTION UNTIL SIGNED. THIS DRAWING IS THE EXCLUSIVE PROPERTY OF COLIZZA BRUNI ARCHITECTURE INCORPORATED. COPYRIGHT RESERVED.

NO	REV DATE	REV DESCRIPTION
1	OCT 21, 2021	ISSUED FOR SITE PLAN CONTROL

PROJECT NAME  
**1104 HALTON -  
86 UNIT APARTMENT  
BUILDING**  
OTTAWA, ON

DRAWING TITLE  
**COURTYARD  
ELEVATIONS**

SCALE  
AS NOTED  
DRAWN BY  
JD  
DATE  
10/20/21  
PROJECT NO.  
03020

DRAWING NO.

**A202**

**COLIZZA BRUNI**  
architecture

76 CHAMBERLAIN AVE • OTTAWA • ONTARIO • K1S 1V9  
T 613.236.2944 • F 613.236.6777 • www.colizzabruni.com