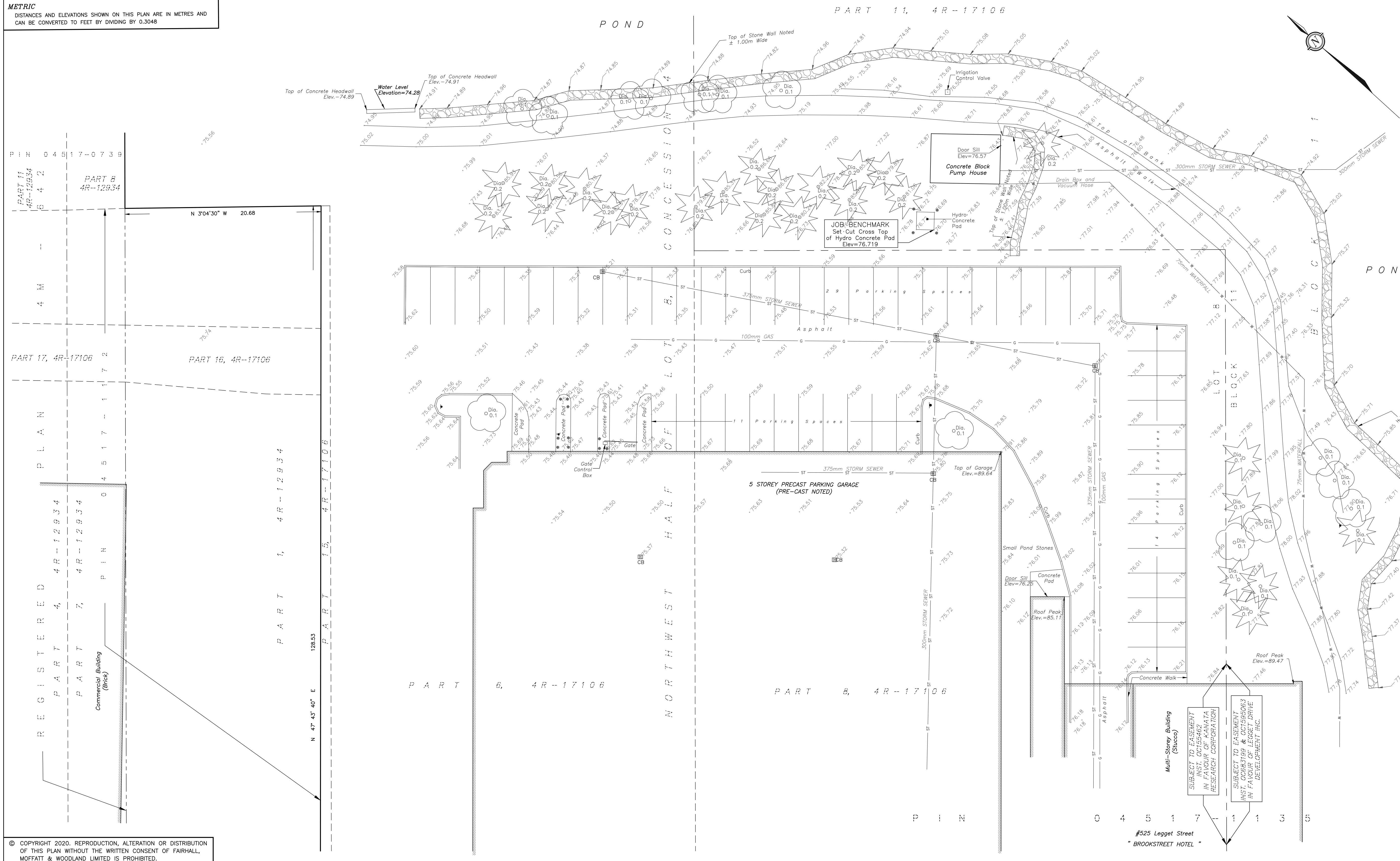


**METRIC**  
 DISTANCES AND ELEVATIONS SHOWN ON THIS PLAN ARE IN METRES AND CAN BE CONVERTED TO FEET BY DIVIDING BY 0.3048



TOPOGRAPHIC SURVEY OF  
 PART OF BLOCK 11  
 REGISTERED PLAN 4M-1096  
 AND  
 PART OF LOT 8  
 CONCESSION 4  
 GEOGRAPHIC TOWNSHIP OF MARCH  
 Now CITY OF OTTAWA  
 SCALE 1 : 200  
 0 5 10 20 metres  
**FAIRHALL, MOFFATT & WOODLAND LIMITED**  
 ONTARIO LAND SURVEYORS

**ELEVATION NOTES**

- ELEVATIONS SHOWN HEREON ARE REFERRED TO GEODETIC DATUM (CVGD28).
- ELEVATIONS FOR MANHOLE COVERS AND CATCH BASINS HAVE TO BE INDEPENDENTLY CONFIRMED BEFORE THEY CAN BE ACCEPTED FOR FINAL DESIGN OR CONSTRUCTION PURPOSES.
- IT IS THE RESPONSIBILITY OF THE USER OF THIS INFORMATION TO VERIFY THAT THE JOB BENCHMARK HAS NOT BEEN ALTERED OR DISTURBED AND THAT ITS RELATIVE ELEVATION AND DESCRIPTION AGREE WITH THE INFORMATION SHOWN ON THIS DRAWING.

**UTILITY NOTES**

- THIS DRAWING CANNOT BE ACCEPTED AS ACKNOWLEDGING ALL OF THE UNDERGROUND UTILITIES AND IT WILL BE THE RESPONSIBILITY OF THE USER TO CONTACT THE RESPECTIVE UTILITY AUTHORITIES FOR CONFIRMATION OR LOCATION.
- UNDERGROUND UTILITIES, AS REPORTED ON THIS DRAWING, ARE NOT BASED ON AN ACTUAL 'FIELD LOCATE' BY THE RESPECTIVE UTILITY AGENCIES BUT HAVE BEEN COMPILED FROM DATA OBTAINED FROM THE FOLLOWING SOURCE:  
 a) GENERAL PLAN OF SERVICES BY NOVATECH (REV.3 DATED APRIL 19, 2016).

**NOTES**

- BEARINGS HEREON ARE GRID BEARINGS AND ARE DERIVED FROM NCC HORIZONTAL CONTROL MONUMENTS 019791036 (N 5024574.054, E 348805.938) AND 019791037 (N 5025883.799, E 347613.881) AND ARE REFERRED TO THE CENTRAL MERIDIAN 76°30'W LONGITUDE, ZONE 9 OF THE 3° M.T.M. ONTARIO COORDINATE SYSTEM (NAD 83).
- DISTANCES ARE GROUND AND CAN BE CONVERTED TO GRID BY MULTIPLYING BY THE COMBINED SCALE FACTOR 0.999919.
- PROPERTY DIMENSIONS ARE PER RECORDS OF FAIRHALL, MOFFATT & WOODLAND LIMITED, O.L.S. AND THE LAND REGISTRY OFFICE. THIS PLAN DOES NOT REPRESENT A NEW BOUNDARY SURVEY.

**LEGEND**

- PIN - PROPERTY IDENTIFIER NUMBER
- DIA. - DIAMETER
- CB - CATCH BASIN
- - BOLLARD
- ▲ - SIGN
- ☼ - CONIFEROUS TREE
- ☼ - DECIDUOUS TREE
- s- - SANITARY SEWER
- st- - STORM SEWER
- w- - WATERFALL
- - CURB

THIS IS NOT A  
 VALID COPY  
 UNLESS EMBOSSED  
 WITH SEAL

© COPYRIGHT 2020. REPRODUCTION, ALTERATION OR DISTRIBUTION OF THIS PLAN WITHOUT THE WRITTEN CONSENT OF FAIRHALL, MOFFATT & WOODLAND LIMITED IS PROHIBITED.

SURVEY COMPLETED SEPTEMBER 10, 2020

**Fairhall  
 Moffatt &  
 Woodland**  
 LIMITED  
 ONTARIO LAND SURVEYORS  
 Surveying and Land Information Services  
 100-600 TERRY FOX DRIVE, KANATA, ONTARIO K2L 4K6  
 TEL: (613) 591-2580 FAX: (613) 591-1495  
 www.fmw.on.ca

OTTAWA

JOB No.  
 A A 2 5 7 0 0  
 E 350444, N 5023289  
 REFERENCE No.  
 211-4-MARCH  
 22-4M-1096  
 S:\J085\A25700.DWG 13.09.2020  
 TP\_AA257a.DWG (98)

#525 Leggett Street  
 "BROOKSTREET HOTEL"

Multi-Storey Building (Stucco)  
 SUBJECT TO EASEMENT  
 INST. OCT15/482  
 IN FAVOUR OF KANATA  
 RESEARCH CORPORATION  
 SUBJECT TO EASEMENT  
 INST. OCT15/5063  
 IN FAVOUR OF LEGGETT DRIVE  
 DEVELOPMENT INC.

5 STOREY PRECAST PARKING GARAGE  
 (PRE-CAST NOTED)

Concrete Block  
 Pump House

JOB BENCHMARK  
 Set-Cut Cross Top  
 of Hydro Concrete Pad  
 Elev=76.719

PART 11  
 4R-12934  
 PART 8  
 4R-12934

PART 17, 4R-17106  
 PART 16, 4R-17106

REGISTERED  
 PART 4, 4R-12934  
 PART 7, 4R-12934  
 Commercial Building (Steel)

PART 1, 4R-12934  
 PART 1, 4R-17106  
 PART 1, 4R-17106  
 N 47° 43' 40" E  
 128.53

PART 6, 4R-17106

PART 8, 4R-17106

PIN  
 0 4 5 1 7 - 1 1 5 5