

METRIC
DISTANCES AND COORDINATES SHOWN ON THIS PLAN ARE IN METRES AND CAN BE CONVERTED TO FEET BY DIVIDING BY 0.3048

COORDINATES WERE DERIVED FROM REAL TIME NETWORK OBSERVATIONS (SMARTNET) MTM ZONE 9, NAD83 ORIGINAL. COORDINATES HAVE BEEN DETERMINED TO AN URBAN ACCURACY IN ACCORDANCE WITH SECTION 14(2) OF O. REG. 216/10.

POINT ID	NORTHING	EASTING
.	.	.
.	.	.
.	.	.
.	.	.
.	.	.
.	.	.
.	.	.
.	.	.
.	.	.
.	.	.
.	.	.

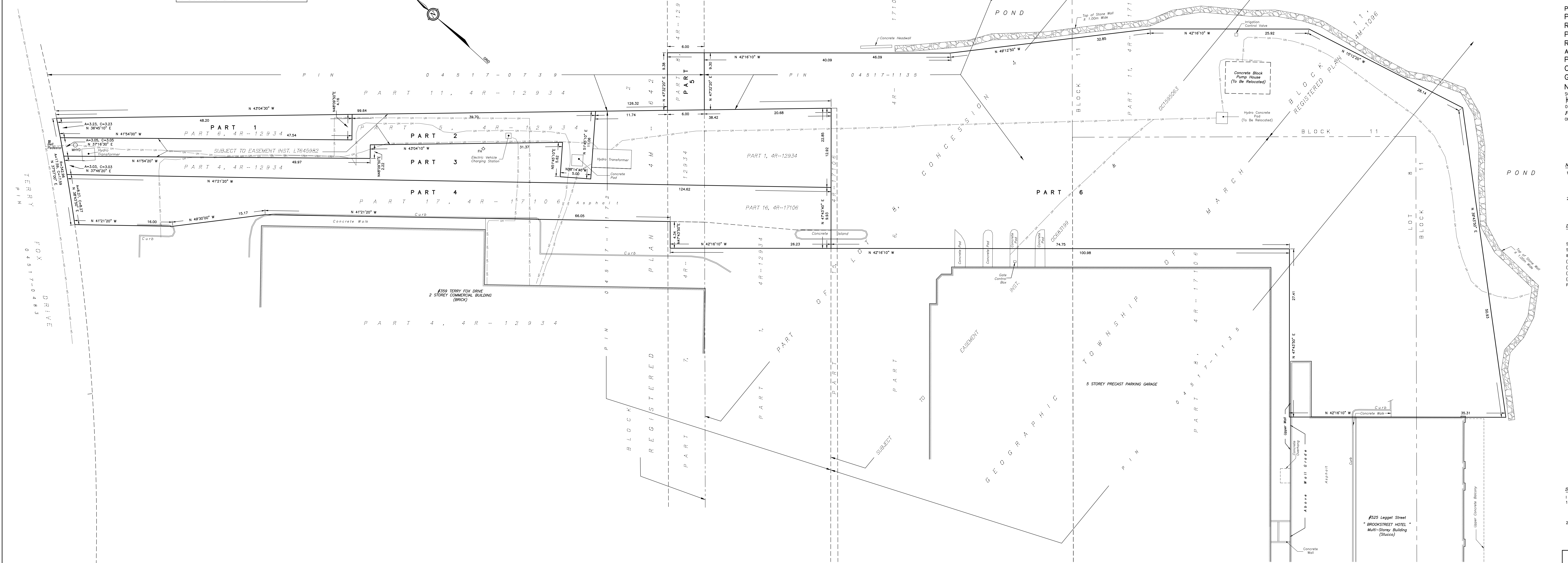
COORDINATES CANNOT IN THEMSELVES BE USED TO RE-ESTABLISH CORNERS OR BOUNDARIES SHOWN ON THIS PLAN.

PLAN PREPARED FOR COMMITTEE OF ADJUSTMENT PURPOSES SEPTEMBER 16, 2021.

AREA (SQ.M.)		SCHEDULE			
AREA (SQ.M.)	PART	LOT/BLOCK	PLAN/CONCESSION	PIN	
175	1	PART OF BLOCK 2	4M-642	PART OF 04517-1172	
374	2	PART OF BLOCK 2	4M-642	PART OF 04517-1172	
832	3	PART OF BLOCK 2 AND PART OF LOT 8	PLAN 4M-642 AND CONCESSION 4	PART OF 04517-1172	
904	4	PART OF BLOCK 2 AND PART OF LOT 8	PLAN 4M-642 AND CONCESSION 4	PART OF 04517-1172	
56	5	PART OF BLOCK 2	4M-642	PART OF 04517-0729	
4528	6	PART OF LOT 8 AND PART OF BLOCK 11	PLAN 4M-1096 AND CONCESSION 4	PART OF 04517-1135	

PART 2 SUBJECT TO EASEMENT INST. L7645982.
PART 6 SUBJECT TO EASEMENT INST. OC683199 & OC1599063.
PARTS 1 TO 4 INCLUSIVE COMPRISE PART OF PIN 04517-1172.

I REQUIRE THIS PLAN TO BE DEPOSITED UNDER THE LAND TITLES ACT.
DATE: _____
REPRESENTATIVE FOR THE LAND TITLES DIVISION OF OTTAWA - CARLETON (N° 4)
DATE: _____



PLAN OF SURVEY OF PART OF BLOCK 2 REGISTERED PLAN 4M-642 PART OF BLOCK 11 REGISTERED PLAN 4M-1096 AND PART OF LOT 8 CONCESSION 4 GEOGRAPHIC TOWNSHIP OF MARCH NOW CITY OF OTTAWA
SCALE 1 : 200
FAIRHALL, MOFFATT & WOODLAND LIMITED
ONTARIO LAND SURVEYORS

NOTES
1. BEARINGS ARE GRID, DERIVED FROM OBSERVED REFERENCE POINTS (O) AND (C) BY REAL TIME NETWORK OBSERVATIONS AND ARE REFERRED TO THE CENTRAL MERIDIAN, 78°30'W LONGITUDE MTM ZONE 9, (NAD83 ORIGINAL).
2. DISTANCES ARE GROUND AND CAN BE CONVERTED TO GRID BY MULTIPLYING BY THE COMBINED SCALE FACTOR *****.

LEGEND
□ - SURVEY MONUMENT SET
■ - SURVEY MONUMENT FOUND
SIB - STANDARD IRON BAR
SSIB - SHORT STANDARD IRON BAR
IB - IRON BAR
(P) - REGISTERED PLAN
(S) - SET
(M) - MEASURED
(857) - FAIRHALL, MOFFATT & WOODLAND LIMITED, O.L.S.
PIN - PROPERTY IDENTIFIER NUMBER

SURVEYOR'S CERTIFICATE
I CERTIFY THAT:
1. THIS SURVEY AND PLAN ARE CORRECT AND IN ACCORDANCE WITH THE SURVEYS ACT, THE SURVEYORS ACT, THE LAND TITLES ACT AND THE REGULATIONS MADE UNDER THEM.
2. THE SURVEY WAS COMPLETED ON _____

DATE: _____
JOHN H. GUTRI
ONTARIO LAND SURVEYOR

Fairhall Moffatt & Woodland
100-800 TERRY FOX DRIVE, KANATA, ONTARIO K2L 4K6
TEL: (613) 591-2550 FAX: (613) 591-1495
www.fmw.com

JOB No. AA25700
E 350506, N 5023420
REFERENCE No. 22-4M-1096
211-4-MARCH
S:\065\035\010\DWG\145992201.dwg (cpr)