

Distances shown on this plan are ground distances and can be converted to grid distances by multiplying by the combined scale factor of 0.999928.

Bearings are grid, derived from the northerly limit of Part 191, Registered Plan 4M-1585, shown to be N60°11'10"E thereon and are referred to the Central Meridian of MTM Zone 9 (76°30' West Longitude) NAD-83 (original).

Coordinates are derived from Can-Net 2016 Real Time Network GPS observations referenced to Specified Control Points 01919791338 and 01919871649, MTM Zone 9 (76°30' West Longitude) NAD-83 (original).

Coordinate values are to urban accuracy in accordance with O. Reg. 216/10.

.01919791338 Northing 5000055.96 Easting 346140.91  
 .01919871649 Northing 5007189.87 Easting 372435.05  
 Point A Northing 5012984.14 Easting 363318.01  
 Point B Northing 5012815.13 Easting 363437.80

Caution: Coordinates cannot, in themselves, be used to re-establish corners or boundaries shown on this plan.

**Notes & Legend**

- Denotes Survey Monument Planted
- Survey Monument Found
- SIB Standard Iron Bar
- SSIB Short Standard Iron Bar
- IB Iron Bar
- IBØ Round Iron Bar
- CP Concrete Pin
- (WIT) Witness
- (AOC) Annis, O'Sullivan, Vollebek Ltd. Meas.
- (P1) Registered Plan 4M-1585
- (P2) Plan 4R-22668
- (P3) Plan 5R-3970
- (P4) Expropriation Plan N575787
- UP Utility Pole
- AN Anchor
- OHV Overhead Wires
- P&WF Post & Wire Fence
- RF Rail Fence
- SRW Stone Retaining Wall

I REQUIRE THIS PLAN TO BE DEPOSITED UNDER THE LAND TITLES ACT.  
 DATE: \_\_\_\_\_

**PLAN 4R-**  
 RECEIVED AND DEPOSITED  
 DATE: \_\_\_\_\_

V. ANDREW SHELP  
 ONTARIO LAND SURVEYOR

REPRESENTATIVE FOR  
 LAND REGISTRAR FOR THE  
 LAND TITLES DIVISION OF  
 OTTAWA-CARLETON NO. 4.

**SCHEDULE**

AREA (Hectares)	PART	LOT	CONCESSION	PIN
23.0987	1	PART OF 12	3 (RIDEAU FRONT)	ALL OF 04595-0068

**PLAN OF SURVEY OF  
 PART OF LOT 12  
 CONCESSION 3 (RIDEAU FRONT)  
 Geographic Township of Nepean  
 City of Ottawa**  
 Surveyed by Annis, O'Sullivan, Vollebek Ltd.

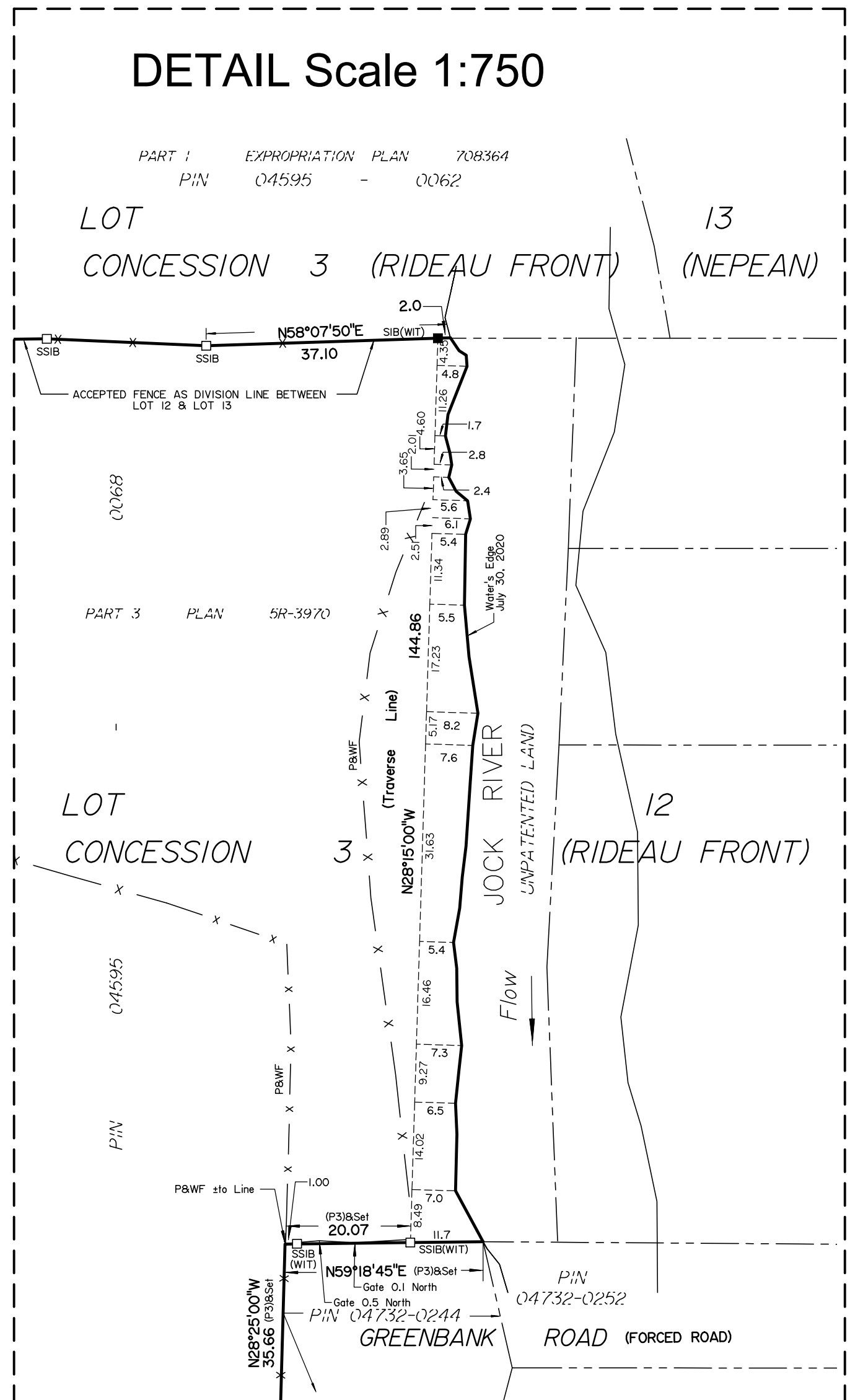
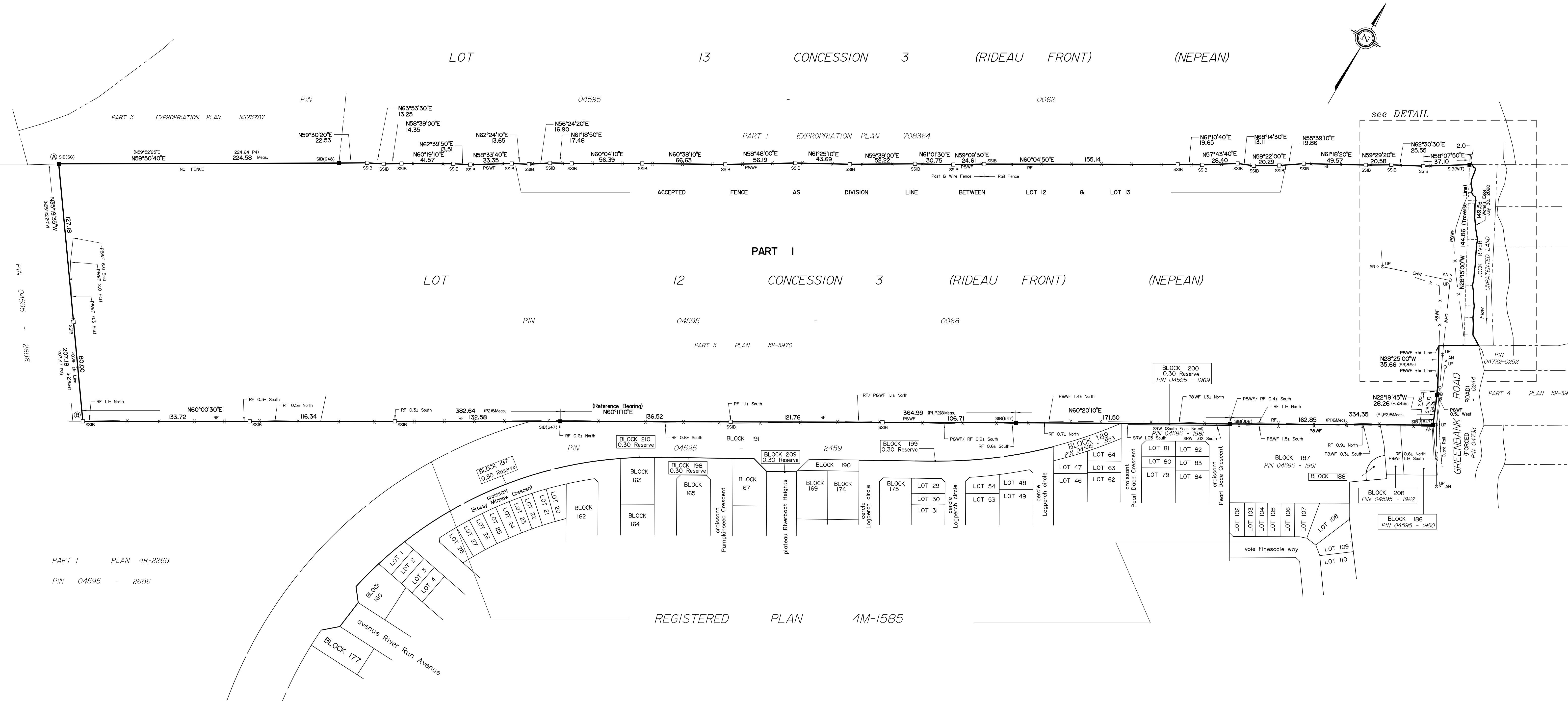
Scale 1 : 1500

Metric  
 DISTANCES AND COORDINATES SHOWN ON THIS PLAN  
 ARE IN METRES AND CAN BE CONVERTED TO FEET BY  
 DIVIDING BY 0.3048.

**Surveyor's Certificate**

- I CERTIFY THAT:
- This survey and plan are correct and in accordance with the Surveys Act, the Surveyors Act and the Land Titles Act and the regulations made under them.
  - The survey was completed on the 4th day of August, 2020.

Date: \_\_\_\_\_  
 V. Andrew Shelp  
 Ontario Land Surveyor



PART 1 PLAN 4R-22668  
 PIN 04595 - 2686

REGISTERED PLAN 4M-1585