

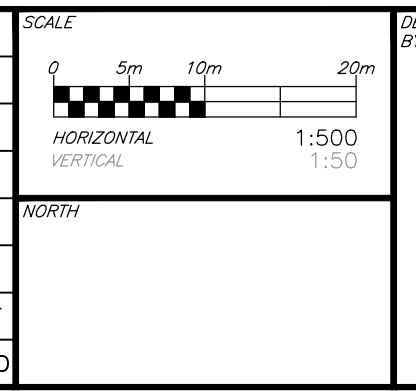
± ELEVATIONS	118.49	118.29	117.72	116.00	114.62	113.70	113.70	113.70	113.70	113.95	113.57	115.99	115.99	116.04	115.05	115.02	115.89	115.85
PROPOSED																		
EXISTING																		
TOP OF WATERMAIN ELEVATION																		
STORM SEWER INVERTS	113.76	20.8m-900mm ^Ø CONCRETE STM @ 0.30%	113.70	113.60	113.24	12.3m-1050mm ^Ø CONCRETE STM @ 0.49%	112.20	112.15	9.5m-1050mm ^Ø CONCRETE STM @ 0.50%	111.85								
SANITARY SEWER INVERTS																		
CHAINAGE																		

File: \\exp\exp\proj\2021\1163131\1163131.dwg
 User: jstewart
 Date: 2021/07/20 11:14:31 AM
 Plot: 2021/07/20 11:14:31 AM
 Plotter: HP DesignJet T1100
 Plot Style: exp.ctb
 Scale: 1:500
 Sheet: 1 of 1
 Title: PLAN AND PROFILE - STORM
 Project: 6171 HAZELDEAN ROAD
 Client: 11654128 CANADA INC.
 Designer: JLF
 Checker: BMT
 CAD: SK
 Project Manager: JLF
 Approved: BMT

CAUTION
 THE POSITION OF ALL POLE LINES, CONDUITS, WATERMANS, SEWERS AND OTHER UNDERGROUND AND OVERGROUND UTILITIES AND STRUCTURES IS NOT NECESSARILY SHOWN ON THE CONTRACT DRAWINGS, AND WHERE SHOWN, THE ACCURACY OF THE POSITION OF SUCH UTILITIES AND STRUCTURES IS NOT GUARANTEED. BEFORE STARTING WORK, DETERMINE THE EXACT LOCATION OF ALL SUCH UTILITIES AND STRUCTURES AND ASSUME ALL LIABILITY FOR DAMAGE TO THEM.

**PRELIMINARY
NOT FOR CONSTRUCTION**

REV	REVISION DESCRIPTION	DATE	BY	APPD
1	SUBMISSION NO.2	04/27/21	SK	BMT



DESIGNED BY: [Blank]
 REVIEWED BY: [Blank]

CLIENT: 11654128 CANADA INC.
 768 BOULEVARD ST. JOSEPH
 GATINEAU, QC

exp Services Inc.
 1-813-688-1899 | F +1-613-225-7330
 265 Queenwood Drive, Unit 100
 Ottawa, ON K2B 8H6
 Canada
 www.exp.com
 • BUILDINGS • EARTH & ENVIRONMENT • ENERGY •
 • INDUSTRIAL • INFRASTRUCTURE • SUSTAINABILITY •

BASE PLAN	SK	PROJECT	6171 HAZELDEAN ROAD OTTAWA, ONTARIO.	PROJECT No.	258780
DESIGN	JLF	CHECKED	BMT	SURVEY	238800-FMW
CAD	SK	DATE	24/07/20	DRAWING No.	PP11
PROJECT MANAGER	JLF	APPROVED	BMT	TITLE	PLAN AND PROFILE - STORM