

**LEGEND**

- PROPERTY LIMIT
- EXISTING DECIDUOUS TREE TO REMAIN
- ⊗ EXISTING CONIFEROUS TREE TO REMAIN
- EXISTING TREE TO REMOVE
- CRITICAL ROOT ZONE (CRZ)
- TREE PROTECTION FENCE

**TREE INVENTORY as of Feb. 04/2021**

No.	Botanical Name	Common Name	DBH (cm)	CRZ(m)	Condition	Remarks	Recomm.
1	<i>Acer saccharum</i>	Sugar Maple	48	4.8	Good	Good form	Conflict
2	<i>Acer saccharum</i>	Sugar Maple	29	2.9	Good		Conflict
3	<i>Pinus nigra</i>	Austrian Pine	34	3.4	Good		Conflict
4	<i>Pinus nigra</i>	Austrian Pine	34	3.4	Good		Conflict
5	<i>Pinus nigra</i>	Austrian Pine	34	3.4	Good		Conflict
6	<i>Pinus nigra</i>	Austrian Pine	37	3.7	Good		Conflict
7	<i>Pinus nigra</i>	Austrian Pine	35	3.5	Good		Conflict
8	<i>Pinus nigra</i>	Austrian Pine	36	3.6	Fair		Conflict
9	<i>Pinus nigra</i>	Austrian Pine	38	3.8	Fair		Conflict
10	<i>Pinus nigra</i>	Austrian Pine	38	3.8	Good		Conflict
11	<i>Elaeagnus angustifolia</i>	Russian Olive	33	3.3	Fair	Leaning	Conflict
12	<i>Elaeagnus angustifolia</i>	Russian Olive	22, 16	3	Good	Multi-stem	Conflict
13	<i>Elaeagnus angustifolia</i>	Russian Olive	15, 9, 11	3	Good	Multi-stem	Conflict
14	<i>Elaeagnus angustifolia</i>	Russian Olive	23	2.3	Good	Heavy lean	Conflict
15	<i>Elaeagnus angustifolia</i>	Russian Olive	31	3.1	Good	Heavy lean	Conflict
16	<i>Betula pendula</i> 'Gracilis'	Cutleaf Weeping Silver Birch	17	1.7	Poor	Heavy lean, trunk has dead wood	Conflict
17	<i>Quercus macrocarpa</i>	Bur Oak	52	5.2	Fair	Witch's broom, salt damage	Conflict
18	<i>Quercus macrocarpa</i>	Bur Oak	21	2.1	Dead	Severe witch's broom	Conflict
19	<i>Acer saccharum</i>	Sugar Maple	47	4.7	Good		Conflict
20	<i>Acer saccharum</i>	Sugar Maple	65	6.5	Good	Soft maple, dead limbs in center of crown	Conflict
21	<i>Malus sp.</i>	Crabapple	25	2.5	Fair	Leaning	Conflict
22	<i>Malus sp.</i>	Crabapple	24	2.4	Fair		Conflict
23	<i>Pinus nigra</i>	Austrian Pine	37	3.7	Good	Significant dead wood	Conflict
24	<i>Pinus nigra</i>	Austrian Pine	35	3.5	Fair		Conflict
25	<i>Pinus nigra</i>	Austrian Pine	38	3.8	Good	Branches overhang ex. building	Conflict
26	<i>Acer saccharum</i>	Sugar Maple	53	5.3	Good	Soft maple	Conflict
27	<i>Acer saccharum</i>	Sugar Maple	58	5.8	Poor	Large split in bark, seam in trunk, dead limb	Conflict
28	<i>Picea pungens</i>	Colorado Spruce	28	2.8	Good		Protect
29	<i>Picea pungens</i>	Colorado Spruce	28	2.8	Good		Protect
30	<i>Picea pungens</i>	Colorado Spruce	23	2.3	Good		Protect
31	<i>Picea pungens</i>	Colorado Spruce	24	2.4	Good		Protect
32	<i>Picea pungens</i>	Colorado Spruce	25	2.5	Good		Protect
33	<i>Picea pungens</i>	Colorado Spruce	25	2.5	Good	Missing leader	Protect
34	<i>Picea pungens</i>	Colorado Spruce	28	2.8	Good		Protect
35	<i>Quercus macrocarpa</i>	Bur Oak	35	3.5	Good	All branches pruned	Protect
36	<i>Acer saccharum</i>	Sugar Maple	26	2.6	Good		Protect
37	<i>Acer saccharum</i>	Sugar Maple	27	2.7	Good	Mower damage @ base, seam in trunk	Protect
38	<i>Acer saccharum</i>	Sugar Maple	20	2	Good	Seam in trunk x2	Protect
39	<i>Acer saccharum</i>	Sugar Maple	28	2.8	Good		Protect
40	<i>Acer saccharum</i>	Sugar Maple	25	2.5	Good		Protect
41	<i>Acer saccharum</i>	Sugar Maple	27	2.7	Good	Seam in trunk	Protect
42	<i>Acer saccharum</i>	Sugar Maple	24	2.4	Good		Protect
43	<i>Acer saccharum</i>	Sugar Maple	20	2	Good		Protect
44	<i>Acer saccharum</i>	Sugar Maple	20	2	Good		Protect
45	<i>Acer saccharum</i>	Sugar Maple	26	2.6	Good		Protect
46	<i>Acer saccharum</i>	Sugar Maple	24	2.4	Good	Minor seam in trunk	Protect
47	<i>Acer saccharum</i>	Sugar Maple	24	2.4	Good		Protect
48	<i>Acer ginnala</i>	Amur Maple	15, 16, 15, 20	3	Good	Multi-stem	Protect
49	<i>Acer ginnala</i>	Amur Maple	14, 14, 12, 13	3	Good	Multi-stem	Protect
50	<i>Acer ginnala</i>	Amur Maple	10, 9, 11	3	Good	Multi-stem	Protect
51	<i>Acer ginnala</i>	Amur Maple	11, 9	3	Fair	Multi-stem, seam in trunk	Protect
52	<i>Acer ginnala</i>	Amur Maple	15, 12, 18, 13	3	Good	Multi-stem	Protect
53	<i>Picea glauca</i>	White Spruce	26	2.6	Good		Protect
54	<i>Picea glauca</i>	White Spruce	35	3.5	Good		Protect
55	<i>Acer ginnala</i>	Amur Maple	11	1.1	Good		Protect
56	<i>Acer ginnala</i>	Amur Maple	9, 8, 6	2	Good	Multi-stem	Protect
57	<i>Acer ginnala</i>	Amur Maple	6, 9	0.9	Good		Protect
58	<i>Acer ginnala</i>	Amur Maple	8, 8, 10	2	Good	Multi-stem	Protect
59	<i>Acer ginnala</i>	Amur Maple	11	1.1	Poor	Weak branch union	Protect
60	<i>Acer ginnala</i>	Amur Maple	11, 30	2	Fair	Multi-stem	Protect
61	<i>Acer ginnala</i>	Amur Maple	2	0.2	Good		Protect
62	<i>Acer ginnala</i>	Amur Maple	10, 7	2	Good	Multi-stem	Protect
63	<i>Acer ginnala</i>	Amur Maple	10, 9	2	Good	Multi-stem	Protect
64	<i>Acer ginnala</i>	Amur Maple	11, 8, 8	2	Poor	Multi-stem	Protect
65	<i>Acer ginnala</i>	Amur Maple	18, 13	2	Good	Multi-stem	Protect
66	<i>Acer ginnala</i>	Amur Maple	9, 9	2	Fair	Multi-stem	Protect
67	<i>Picea glauca</i>	White Spruce	46	4.6	Good		Protect
68	<i>Acer ginnala</i>	Amur Maple	12, 13	2	Poor	Multi-stem	Conflict
69	<i>Acer ginnala</i>	Amur Maple	8, 7	2	Poor	Multi-stem	Conflict
70	<i>Acer ginnala</i>	Amur Maple	10, 10	2	Fair	Multi-stem	Conflict
71	<i>Picea glauca</i>	White Spruce	33	3.3	Good		Conflict
72	<i>Acer ginnala</i>	Amur Maple	15, 9, 9	3	Poor	Multi-stem	Conflict
73	<i>Picea glauca</i>	White Spruce	32	3.2	Good		Conflict
74	<i>Acer ginnala</i>	Amur Maple	12, 9, 12, 13	3	Poor	Multi-stem	Conflict
75	<i>Picea glauca</i>	White Spruce	30	3	Good	Minor seam in trunk	Conflict
76	<i>Acer ginnala</i>	Amur Maple	6, 8, 5, 9	3	Fair	Multi-stem	Conflict
77	<i>Acer ginnala</i>	Amur Maple	13, 14, 14	3	Poor	Multi-stem	Conflict
78	<i>Malus sp.</i>	Crabapple	29	2.9	Good		Conflict
79	<i>Malus sp.</i>	Crabapple	31	3.1	Poor		Conflict
80	<i>Pinus nigra</i>	Austrian Pine	45	4.5	Fair	May have tip-bleight	Conflict
81	<i>Acer ginnala</i>	Amur Maple	14, 14, 14	3	Poor	Multi-stem, leaning	Conflict
82	<i>Picea glauca</i>	White Spruce	38	3.8	Good		Conflict
83	<i>Picea glauca</i>	White Spruce	17	1.7	Poor	Dead wood	Conflict
84	<i>Picea pungens</i>	Colorado Spruce	26	2.6	Good		Conflict
85	<i>Picea pungens</i>	Colorado Spruce	22	2.2	Good		Conflict
86	<i>Picea pungens</i>	Colorado Spruce	29	2.9	Good		Conflict
87	<i>Picea pungens</i>	Colorado Spruce	25	2.5	Good		Conflict
88	<i>Picea pungens</i>	Colorado Spruce	27	2.7	Good		Conflict
89	<i>Picea pungens</i>	Colorado Spruce	22	2.2	Good		Conflict
90	<i>Picea pungens</i>	Colorado Spruce	27	2.7	Good		Conflict
91	<i>Acer ginnala</i>	Amur Maple	12, 12, 12, 13, 8, 7	3	Good	Multi-stem	Protect
92	<i>Acer ginnala</i>	Amur Maple	10, 9, 10, 16, 12	3	Good	Multi-stem	Protect
93	<i>Acer ginnala</i>	Amur Maple	12, 8, 6, 8, 10, 5, 11, 12, 11	3	Good	Multi-stem	Protect
94	<i>Acer ginnala</i>	Amur Maple	8, 8, 8, 9, 10, 9, 6	3	Poor	Multi-stem	Protect
95	<i>Acer ginnala</i>	Amur Maple	14, 12, 12, 10	3	Fair	Multi-stem	Protect
96	<i>Acer ginnala</i>	Amur Maple	14, 13, 15, 10, 10, 10, 7	3	Good	Multi-stem	Protect
97	<i>Acer ginnala</i>	Amur Maple	13, 8, 16, 12, 13, 13, 13	3	Good	Multi-stem	Protect
130	<i>Gleditsia triacanthos</i>	Honey Locust	15	1.5	Good		Conflict
131	<i>Gleditsia triacanthos</i>	Honey Locust	15	1.5	Good		Conflict
132	<i>Gleditsia triacanthos</i>	Honey Locust	15	1.5	Good		Conflict
133	<i>Gleditsia triacanthos</i>	Honey Locust	12	1.2	Good		Conflict
134	<i>Gleditsia triacanthos</i>	Honey Locust	15	1.5	Good		Conflict
135	<i>Gleditsia triacanthos</i>	Honey Locust	17	1.7	Good		Conflict
136	<i>Gleditsia triacanthos</i>	Honey Locust	16	1.6	Good		Conflict
137	<i>Gleditsia triacanthos</i>	Honey Locust	17	1.7	Good		Conflict
138	<i>Gleditsia triacanthos</i>	Honey Locust	18	1.8	Good		Conflict
139	<i>Gleditsia triacanthos</i>	Honey Locust	15	1.5	Good		Conflict
140	<i>Gleditsia triacanthos</i>	Honey Locust	12	1.2	Good		Conflict
141	<i>Gleditsia triacanthos</i>	Honey Locust	14	1.4	Good		Conflict
142	<i>Gleditsia triacanthos</i>	Honey Locust	15	1.5	Good		Conflict

Continued on sheet 119067-TCR2

**NOTE:**  
THE POSITION OF ALL POLE LINES, CONDUITS, WATERMANS, SEWERS AND OTHER UNDERGROUND AND OVERGROUND UTILITIES AND STRUCTURES IS NOT NECESSARILY SHOWN ON THE CONTRACT DRAWINGS, AND WHERE SHOWN, THE ACCURACY OF THE POSITION OF SUCH UTILITIES AND STRUCTURES IS NOT GUARANTEED, BEFORE STARTING WORK, DETERMINE THE EXACT LOCATION OF ALL SUCH UTILITIES AND STRUCTURES AND ASSUME ALL LIABILITY FOR DAMAGE TO THEM.

**Owner:**  
Manulife Ontario Property Portfolio Inc.  
55 Metcalfe Street - Suite 1490  
Ottawa, Ontario  
M5G 2L5

**NOT FOR CONSTRUCTION**

No.	REVISION	DATE	BY
1.	SITE PLAN APPLICATION	MAR 01/21	RGJ

**SCALE**

1:400

0 4 8 12 16

**DESIGN**

RGJ

**CHECKED**

RGJ

**DRAWN**

CT

**CHECKED**

RGJ

**APPROVED**

RGJ

**FOR REVIEW ONLY**

**NOVATECH**  
Engineers, Planners & Landscape Architects  
Suite 200, 240 Michael Cowpland Drive  
Ottawa, Ontario, Canada K2M 1P6  
Telephone (613) 254-9643  
Facsimile (613) 254-5867  
Website www.novatech-eng.com

**LOCATION**  
CITY OF OTTAWA  
WALKLEY CONROY WAREHOUSES

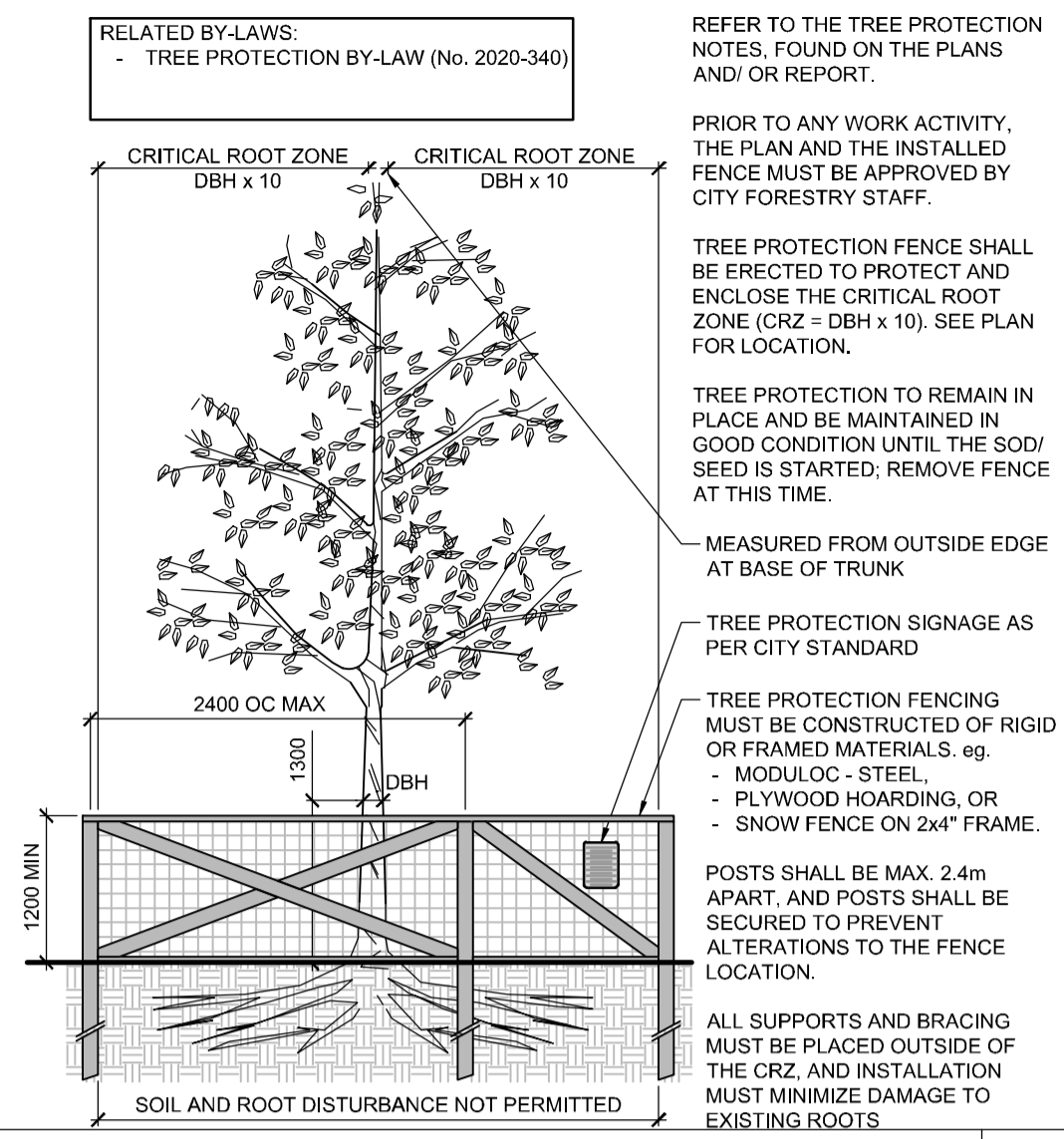
**DRAWING NAME**  
TREE CONSERVATION REPORT PLAN

**PROJECT No.** 119067-00

**REV #1**

**DRAWING No.** 119067-TCR1

M:\2019\119067\CAD\LANDSCAPE\119067-1\_TCR.dwg, TCR1, Mar 01, 2021, 12:03pm, clauricotte



RELATED BY-LAWS:  
- TREE PROTECTION BY-LAW (No. 2020-340)

REFER TO THE TREE PROTECTION NOTES, FOUND ON THE PLANS AND/OR REPORT.

PRIOR TO ANY WORK ACTIVITY, THE PLAN AND THE INSTALLED FENCE MUST BE APPROVED BY CITY FORESTRY STAFF.

TREE PROTECTION FENCE SHALL BE ERECTED TO PROTECT AND ENCLOSE THE CRITICAL ROOT ZONE (CRZ = DBH x 10). SEE PLAN FOR LOCATION.

TREE PROTECTION TO REMAIN IN PLACE AND BE MAINTAINED IN GOOD CONDITION UNTIL THE SOIL/SEED IS STARTED; REMOVE FENCE AT THIS TIME.

MEASURED FROM OUTSIDE EDGE AT BASE OF TRUNK

TREE PROTECTION SIGNAGE AS PER CITY STANDARD

TREE PROTECTION FENCING MUST BE CONSTRUCTED OF RIGID OR FRAMED MATERIALS, eg:  
- MODULOC - STEEL,  
- PLYWOOD HOARDING, OR  
- SNOW FENCE ON 2x4" FRAME.

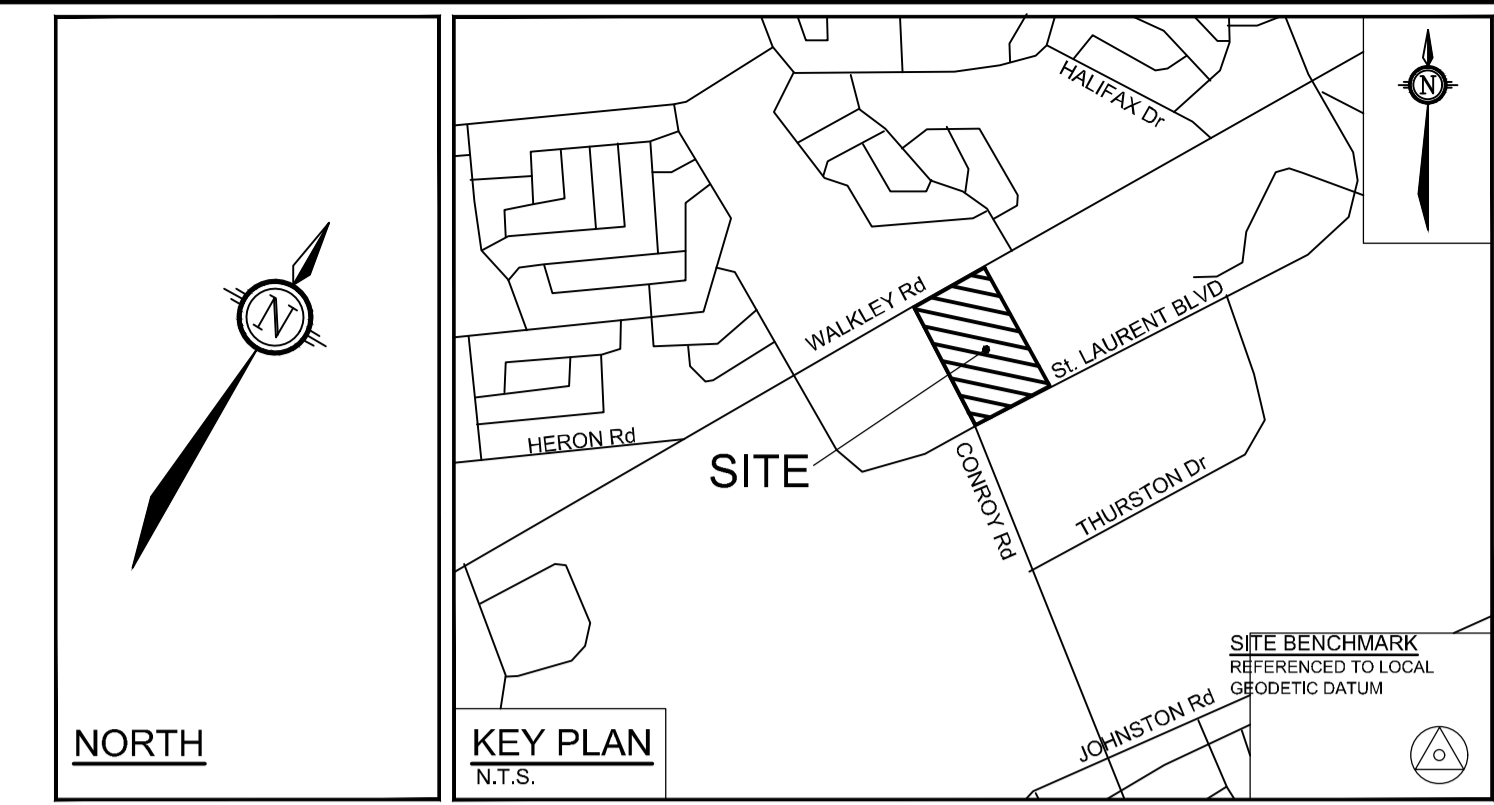
POSTS SHALL BE MAX. 2.4m APART, AND POSTS SHALL BE SECURED TO PREVENT ALTERATIONS TO THE FENCE LOCATION.

ALL SUPPORTS AND BRACING MUST BE PLACED OUTSIDE OF THE CRZ, AND INSTALLATION MUST MINIMIZE DAMAGE TO EXISTING ROOTS

SOIL AND ROOT DISTURBANCE NOT PERMITTED

TREE PROTECTION FENCE

D1



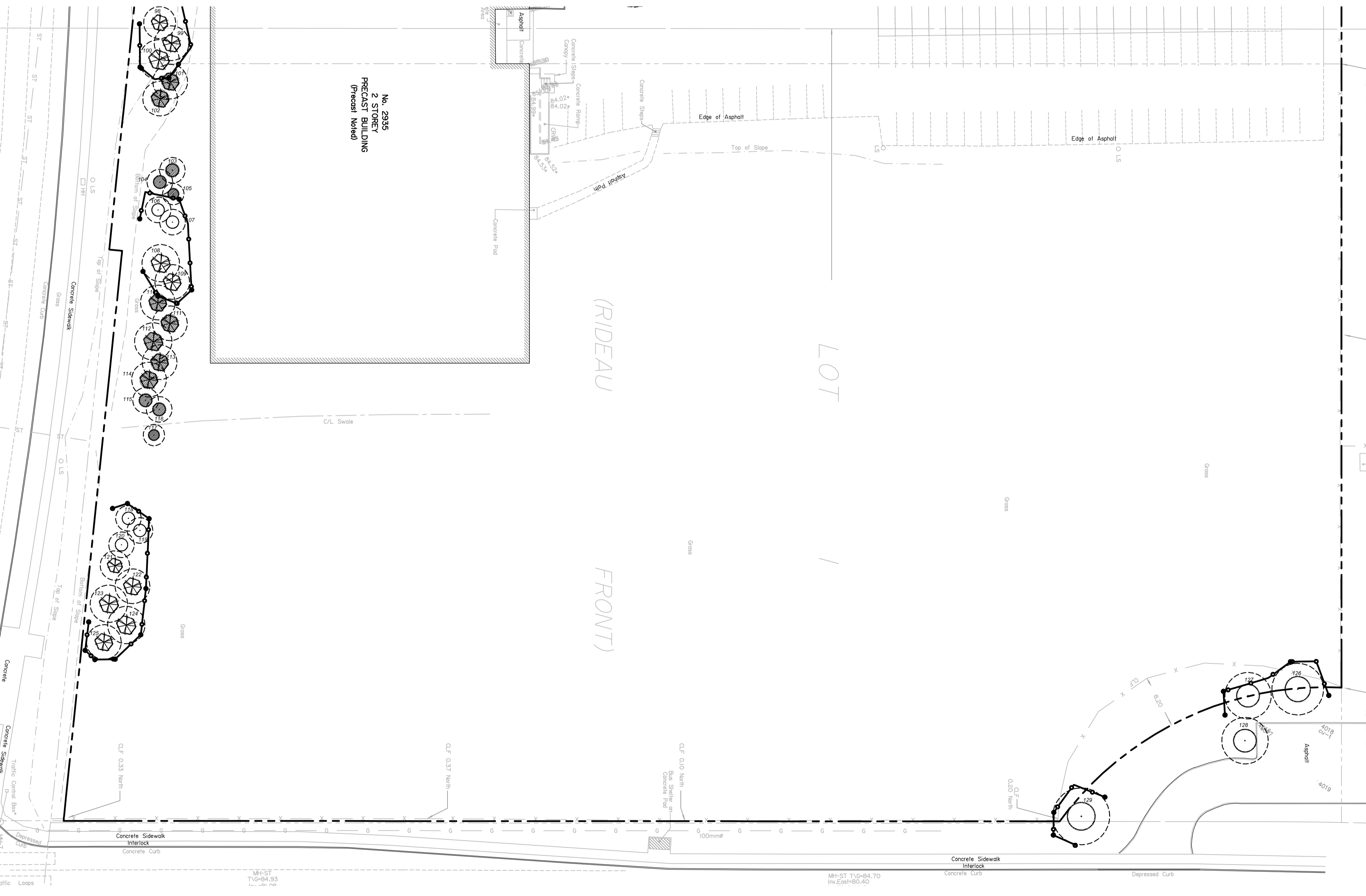
LEGEND

- PROPERTY LIMIT
- EXISTING DECIDUOUS TREE TO REMAIN
- ⊗ EXISTING CONIFEROUS TREE TO REMAIN
- ⊗ EXISTING TREE TO REMOVE
- CRITICAL ROOT ZONE (CRZ)
- TREE PROTECTION FENCE

TREE PROTECTION

The following protection measures must be implemented for retained trees, both on site and on adjacent sites, prior to any work activity, including tree removal. Tree protection fence shall remain in place and be maintained in good condition for the duration of site works:

1. The location of the tree protection fencing must be determined by an arborist and detailed on any associated plans for the site (eg. tree conservation report, tree disclosure report, etc.).
2. Under the guidance of a Landscape Architect or Certified Arborist, erect a fence at the critical root zone (CRZ) of trees. Diameter at breast height (DBH) is the trunk diameter measured at 1.3m height on the tree trunk. The CRZ is calculated as DBH x 10. Refer to the Tree Protection Fence detail.
3. Refer to the Tree Protection Plan for fence location. Both the plan and the installed fence must be approved by City Forestry Staff prior to work commencement.
4. Do not place any material or equipment within 2m of the CRZ of any tree, including outhouses.
5. Do not attach any signs, notices or posters to any tree.
6. Do not disturb, raise or lower the existing grade within the CRZ without approval.
7. Only tunnel or bore when digging within the CRZ of a tree. Hand work only where required within the CRZ, absolutely no machinery permitted.
8. Do not damage the root system, trunk, or branches, or any tree.
9. Do not extend hard surface or significantly change landscaping.
10. Ensure that exhaust fumes from all equipment are directed away from any tree canopy.
11. When trees to be removed overlap with the CRZ of trees to be preserved: cut roots at the edge of the CRZ and grind down stumps after tree removals, do not pull out stumps. Ensure there is not root pulling or disturbance of the ground within the CRZ.
12. If roots must be cut, the Landscape Architect and City Forestry Staff must be notified and consulted prior to work taking place. Roots 20mm or larger should be cut at right angles with clean, sharp horticultural tools without tearing, crushing, or pulling. Refer to City of Ottawa Specification S.P. F-8011 Tree Protection, Excavation of Root Zone.
13. If there appears to be damaged or objectionable branches, the Landscape Architect must be consulted before any work is conducted. Do not prune leaders. Do not prune more than 1/4 of crown.
14. If trees are being affected by site works, a water and fertilizing program will need to be set up to the satisfaction of the Landscape Architect.
15. If the protected fenced area must be reduced to facilitate construction, mitigation measures must be prescribed by the Landscape Architect and approved by City Forestry Staff. These may include the placement of plywood, wood chips, or steel plating over the roots for protection.
16. By-laws: All City-owned trees are protected under the Tree Protection By-Law (No. 2020-340).



TREE INVENTORY as of Feb. 04/2021

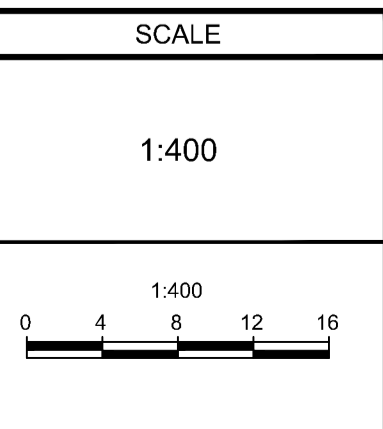
No.	Botanical Name	Common Name	DBH (cm)	CRZ(m)	Condition	Remarks	Recomm.
98	<i>Picea pungens</i>	Colorado Spruce	23	2.3	Good		Protect
99	<i>Picea pungens</i>	Colorado Spruce	19	1.9	Good		Protect
100	<i>Picea pungens</i>	Colorado Spruce	30	3	Good		Protect
101	<i>Picea pungens</i>	Colorado Spruce	24	2.4	Good		Conflict
102	<i>Picea pungens</i>	Colorado Spruce	23	2.3	Good		Conflict
103	<i>Acer ginnala</i>	Amur Maple	10, 11, 15, 10	3	Poor	Multi-stem	Conflict
104	<i>Acer ginnala</i>	Amur Maple	12, 12, 14, 7, 6	3	Good	Multi-stem	Conflict
105	<i>Acer ginnala</i>	Amur Maple	7, 7, 10, 10, 9, 9, 8	3	Good	Multi-stem	Conflict
106	<i>Acer ginnala</i>	Amur Maple	9, 9, 6, 13, 10, 10, 8, 7	3	Good	Multi-stem	Conflict
107	<i>Acer ginnala</i>	Amur Maple	12, 10, 14, 12, 8, 7, 15	3	Poor	Multi-stem	Protect
108	<i>Picea pungens</i>	Colorado Spruce	28	2.8	Good		Protect
109	<i>Picea pungens</i>	Colorado Spruce	23	2.3	Good		Protect
110	<i>Picea pungens</i>	Colorado Spruce	25	2.5	Good		Conflict
111	<i>Picea pungens</i>	Colorado Spruce	22	2.2	Good		Conflict
112	<i>Picea pungens</i>	Colorado Spruce	26	2.6	Good		Conflict
113	<i>Picea pungens</i>	Colorado Spruce	26	2.6	Good		Conflict
114	<i>Picea pungens</i>	Colorado Spruce	23	2.3	Good		Conflict
115	<i>Acer ginnala</i>	Amur Maple	6, 12, 10, 10, 12, 10, 10, 12	3	Fair	Multi-stem	Conflict
116	<i>Acer ginnala</i>	Amur Maple	8, 9, 10	3	Fair	Multi-stem	Conflict
117	<i>Acer ginnala</i>	Amur Maple	11, 9, 10, 8, 8, 9, 9, 5, 12, 9, 9, 9	3	Good	Multi-stem	Conflict
118	<i>Acer ginnala</i>	Amur Maple	13, 8, 9, 10, 11, 7, 8	3	Fair	Multi-stem	Protect
119	<i>Acer ginnala</i>	Amur Maple	7, 9, 7, 9, 9, 8, 8	3	Fair	Multi-stem	Protect
120	<i>Acer ginnala</i>	Amur Maple	7, 9, 10, 8, 10	3	Fair	Multi-stem	Protect
121	<i>Picea pungens</i>	Colorado Spruce	20	2	Good		Protect
122	<i>Picea pungens</i>	Colorado Spruce	25	2.5	Good		Protect
123	<i>Picea pungens</i>	Colorado Spruce	28	2.8	Good		Protect
124	<i>Picea pungens</i>	Colorado Spruce	26	2.6	Good		Protect
125	<i>Acer saccharum</i>	Sugar Maple	23	2.3	Good		Protect
126	<i>Acer saccharum</i>	Sugar Maple	40	4	Poor	Bark peeling away, several fungus on trunk	Protect
127	<i>Acer saccharum</i>	Sugar Maple	35	3.5	Poor		Protect
128	<i>Acer saccharum</i>	Sugar Maple	35	3.5	Poor		Protect
129	<i>Acer saccharum</i>	Sugar Maple	45	4.5	Poor	Dead in center of crown	Protect

NOTE: THE POSITION OF ALL POLE LINES, CONDUITS, WATERMANS, SEWERS AND OTHER UNDERGROUND AND OVERGROUND UTILITIES AND STRUCTURES IS NOT NECESSARILY SHOWN ON THE CONTRACT DRAWINGS, AND WHERE SHOWN, THE ACCURACY OF THE POSITION OF SUCH UTILITIES AND STRUCTURES IS NOT GUARANTEED. BEFORE STARTING WORK, DETERMINE THE EXACT LOCATION OF ALL SUCH UTILITIES AND STRUCTURES AND ASSUME ALL LIABILITY FOR DAMAGE TO THEM.

Owner:  
Manulife Ontario Property Portfolio Inc.  
55 Metcalfe Street - Suite 1490  
Ottawa, Ontario  
M5G 2L5

**NOT FOR CONSTRUCTION**

No.	REVISION	DATE	BY
1.	SITE PLAN APPLICATION	MAR 01/21	RGJ



DESIGN	RGJ
CHECKED	RGJ
DRAWN	CT
CHECKED	RGJ
APPROVED	RGJ

**FOR REVIEW ONLY**

**NOVATECH**  
Engineers, Planners & Landscape Architects  
Suite 200, 240 Michael Cowpland Drive  
Ottawa, Ontario, Canada K2M 1P6

Telephone (613) 254-9643  
Facsimile (613) 254-5867  
Website www.novatech-eng.com

LOCATION	CITY OF OTTAWA WALKLEY CONROY WAREHOUSES
DRAWING NAME	TREE CONSERVATION REPORT PLAN
PROJECT No.	119067-00
REV	REV # 1
DRAWING No.	119067-TCR2

M:\2019\119067\CAD\Landscaping\119067-1\_TCR.dwg, TCR2, Mar 01, 2021, 1:37pm, clurcote