

TOPOGRAPHICAL PLAN OF SURVEY OF

PART OF LOTS A & 1
CONCESSION 5 (RIDEAU FRONT)
CITY OF OTTAWA

Surveyed by Annis, O'Sullivan, Vollebakk Ltd.

Scale 1:400

Metric
DISTANCES SHOWN ON THIS PLAN ARE IN METRES AND
CAN BE CONVERTED TO FEET BY DIVIDING BY 0.3048

Surveyor's Certificate

1. This survey and plan comprising of sheets 1 and 2 are correct and in accordance with the Survey Act, the Surveyors Act, and the Land Titles Act and the regulations made under them.
2. The survey was completed on the 11th day of November, 2020.

November 11, 2020
Date
Andrew J. Bowshen
Ontario Land Surveyor

ELEVATION NOTES

1. Elevations shown are geodetic and are referred to the CGVD2011 geoid datum.
2. It is the responsibility of the user of this information to verify that the job benchmark has not been altered or disturbed and that its relative elevation and description agrees with the information shown on this drawing.

UTILITY NOTES

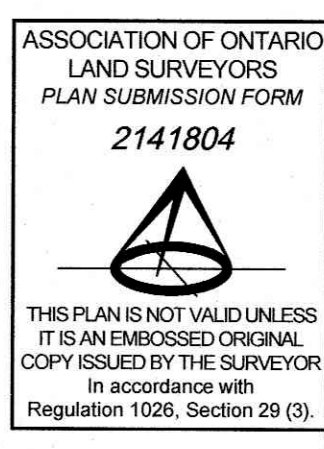
1. This drawing cannot be accepted as acknowledging all of the utilities and it will be the responsibility of the user to contact the respective utility authorities for confirmation.
2. Only visible surface utilities were located.
3. A field location of underground services by the pertinent utility authority is mandatory before any work involving breaking ground, probing, excavating, etc.
4. Maintenance Hole & Traffic Control Box marked by:
U = Underground services and inverts are taken from:
The City of Ottawa Engineering Drawings L-18-16, L-18-23, M-19-06, M-19-07, Drawing No. R-3010-22 Sheet 022, R-3010-23 Sheet 023, Plan No. C-38-E Sheet 3 of 3, Plan Walkley Road 157-100 to 185-00, Plan No. 2933 Sheet 1 of 1, Plan No. 1005 Sheet 3 of 6.

Notes & Legend

- Denotes
- Survey Monument Planted
- Survey Monument Found
- Standard Iron Bar
- Short Standard Iron Bar
- Iron Bar
- Concrete Pin
- Witness
- Measured
- Annis, O'Sullivan, Vollebakk Ltd.
- (877) Plan December 4, 2013
- (AOC) Plan and Field Notes July 29, 1999
- (P) Plan 4K-1404
- (P) Plan 4R-2833B
- (P) Plan 4R-5834
- Fire Hydrant
- Maintenance Hole (Storm Sewer)
- Maintenance Hole (Sanitary)
- Maintenance Hole (Sewer)
- Maintenance Hole (Traffic)
- Maintenance Hole (Hydro)
- Maintenance Hole (Unidentified)
- Water Valve
- Valve Chamber (Watermain)
- Light Standard
- Catch Basin
- Catch Basin Inlet
- Gas Meter
- Sign
- Chain Link Fence
- Concrete Retaining Wall
- Foundation
- Traffic Signal Post
- Traffic Light
- Handhole
- Location of Elevations
- Top of Wall Elevations
- Top of Concrete Curb Elevation
- Centreline
- Property Line
- Top of Grate
- Ball Terminal Box
- Cable Terminal Box
- Unidentified Terminal Box
- Bollard
- Painted Line
- Deciduous Tree
- Coniferous Tree
- Underpass Traffic
- Underpass Storm Sewer
- Underpass Sanitary Sewer
- Underpass Water
- Underpass Power
- Underpass Gas
- Underpass Ropes
- Underpass Bell
- Depressed Curb
- Invert
- Electrical Outlet
- Diameter

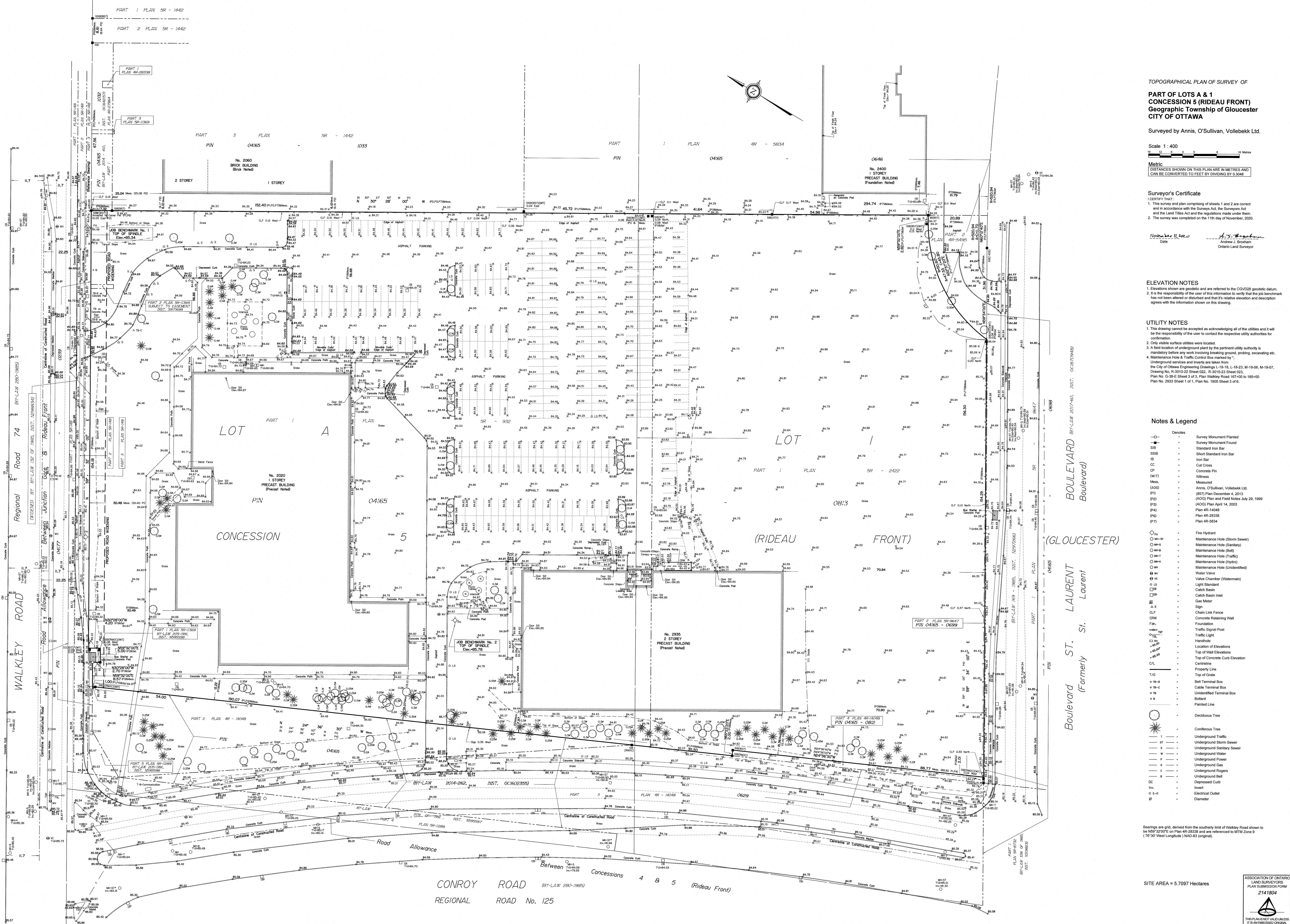
Bearings are grid, derived from the southerly limit of Walkley Road shown to be N69°32'07"E on Plan 4R-2833B and are referenced to MTM Zone 9 (17°30' West Longitude) NAD-83 (English).

SITE AREA = 5.7097 Hectares

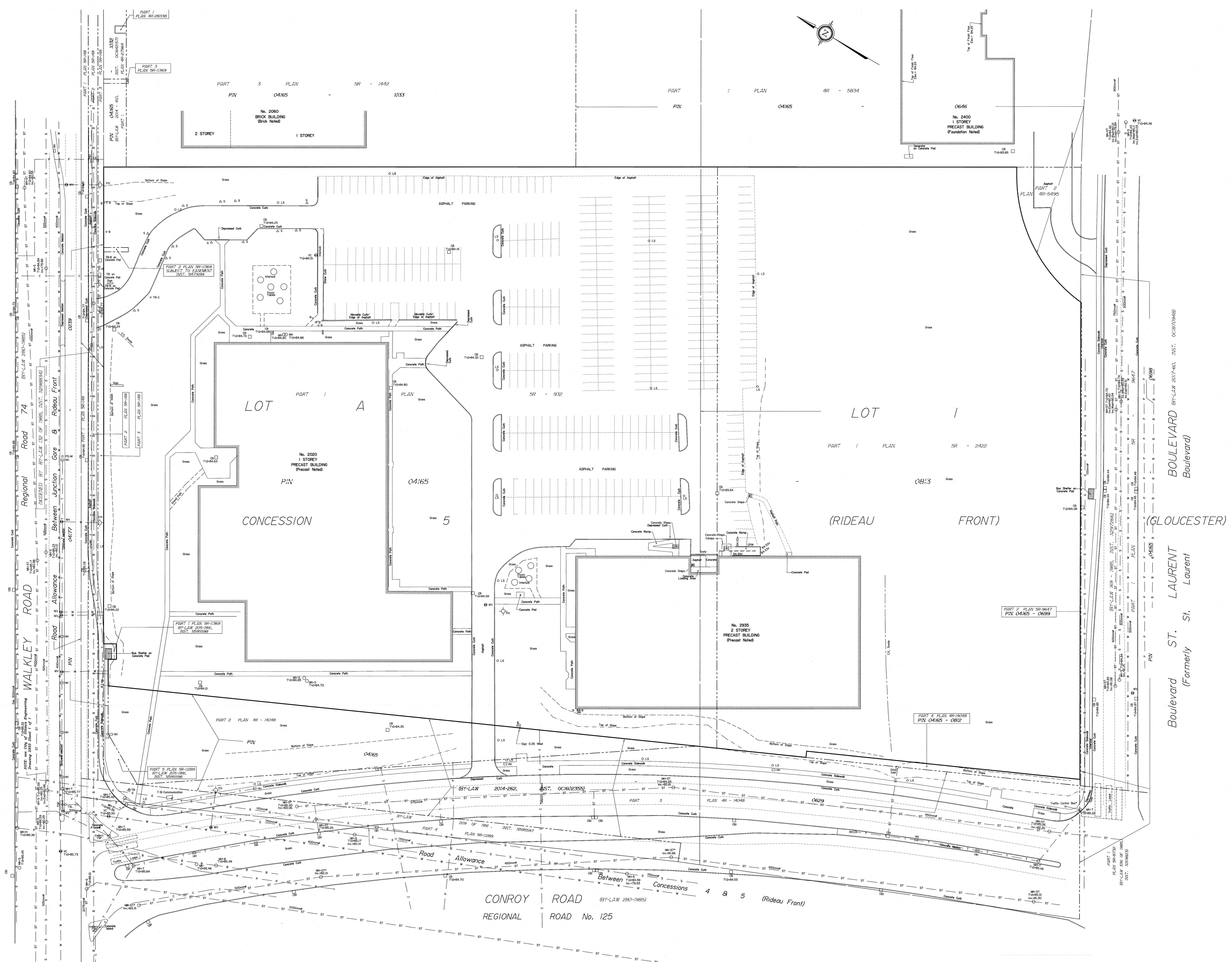


SHEET 1 OF 2

© Annis, O'Sullivan, Vollebakk Ltd. 2020. THIS PLAN IS PROTECTED BY COPYRIGHT.
ANNIS, O'SULLIVAN, VOLLEBAKK LTD.
14 Concession Road
Mississauga, ON L4W 1Z9
Phone: (905) 777-8850 Fax: (905) 777-1019
www.annis-osullivan.com



For Underground services see DETAIL on Sheet 2 of 2



Surveyed by Annis, O'Sullivan, Vollebek Ltd.

Scale 1:400

Metric
DISTANCES SHOWN ON THIS PLAN ARE IN METRES AND CAN BE CONVERTED TO FEET BY DIVIDING BY 0.3048

ELEVATION NOTES
 1. Elevations shown are geodetic and are referred to the CGVD28 geodetic datum.
 2. It is the responsibility of the user of this information to verify that the job benchmark has not been altered or disturbed and that its relative elevation and description agrees with the information shown on this drawing.

UTILITY NOTES
 1. This drawing cannot be accepted as acknowledging all of the utilities and it will be the responsibility of the user to contact the respective utility authorities for confirmation.
 2. Only visible surface utilities were located.
 3. A field location of underground utility by the pertinent utility authority is mandatory before any work involving breaking ground, probing, excavating etc.
 4. Maintenance Hole & Traffic Control Box marked by *.
 Underground services and inverts are taken from the City of Ottawa Engineering Drawings L-18-18, L-18-23, M-19-06, M-19-07, Drawing No. R-3010-22 Sheet 022, R-3010-23 Sheet 023, Plan No. C-28-4 Sheet 3 of 3, Plan Walkley Road 157-02 to 185-00, Plan No. 2533 Sheet 1 of 1, Plan No. 1905 Sheet 3 of 6.

Notes & Legend

- | | | |
|---------|--|-------------------------|
| —○— | Denotes | Survey Monument Planted |
| —■— | Survey Monument Found | |
| SSB | Standard Iron Bar | |
| SSSB | Sheet Standard Iron Bar | |
| IB | Iron Bar | |
| CC | Cut Cross | |
| CP | Concrete Pin | |
| (WIT) | Witness | |
| Meas. | Measured | |
| (AOC) | Annis, O'Sullivan, Vollebek Ltd. | |
| (P1) | (857) Plan December 4, 2013 | |
| (P2) | (AOC) Plan and Field Notes July 29, 1999 | |
| (P3) | (AOC) Plan April 14, 2003 | |
| (P4) | Plan 4R-2408 | |
| (P5) | Plan 4R-2833 | |
| (P7) | Plan 4R-5834 | |
| ○ | Fire Hydrant | |
| ○ M-S | Maintenance Hole (Storm Sewer) | |
| ○ M-S | Maintenance Hole (Sanitary) | |
| ○ M-T | Maintenance Hole (Bell) | |
| ○ M-T | Maintenance Hole (Traffic) | |
| ○ M-H | Maintenance Hole (Hydro) | |
| ○ M-I | Maintenance Hole (Unidentified) | |
| ○ W | Water Valve | |
| ○ V-C | Valve Chamber (Watermain) | |
| ○ L-S | Light Standard | |
| ○ C-B | Catch Basin | |
| ○ C-M | Catch Basin Inlet | |
| ○ G-M | Gas Meter | |
| ○ S | Sign | |
| ○ C-L-F | Chain Link Fence | |
| ○ C-R-W | Concrete Retaining Wall | |
| ○ F | Foundation | |
| ○ T-P | Traffic Signal Post | |
| ○ T-L | Traffic Light | |
| ○ H | Handhole | |
| ○ L | Location of Elevations | |
| ○ T | Top of Wall Elevations | |
| ○ C-E | Top of Concrete Curb Elevation | |
| ○ C | Centreline | |
| ○ P-L | Property Line | |
| ○ T/G | Top of Grate | |
| ○ T-B | Bell Terminal Box | |
| ○ T-C | Cable Terminal Box | |
| ○ T-U | Unidentified Terminal Box | |
| ○ B | Bollard | |
| ○ P-L | Painted Line | |
| ○ D-T | Deciduous Tree | |
| ○ C-T | Coniferous Tree | |
| —T— | Underground Traffic | |
| —ST— | Underground Storm Sewer | |
| —SS— | Underground Sanitary Sewer | |
| —W— | Underground Water | |
| —P— | Underground Power | |
| —G— | Underground Gas | |
| —R— | Underground Rogers | |
| —B— | Underground Bell | |
| —DC— | Depressed Curb | |
| —In— | Invert | |
| ○ E-O | Electrical Outlet | |
| ○ D | Diameter | |

DETAIL 1:400 showing Underground services