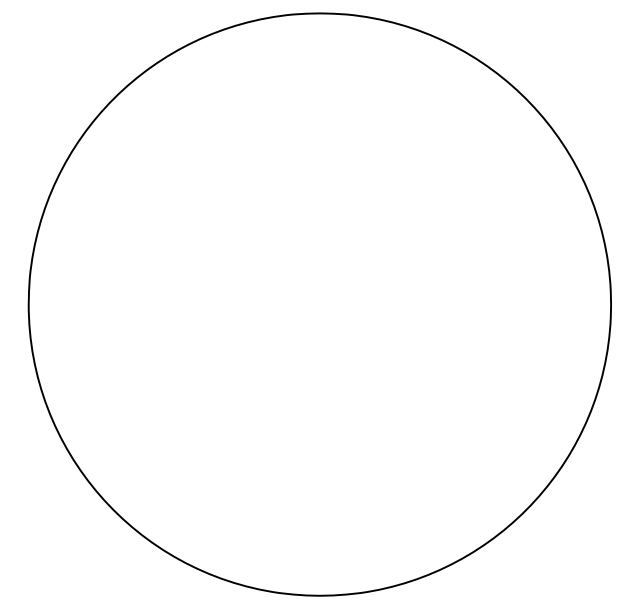
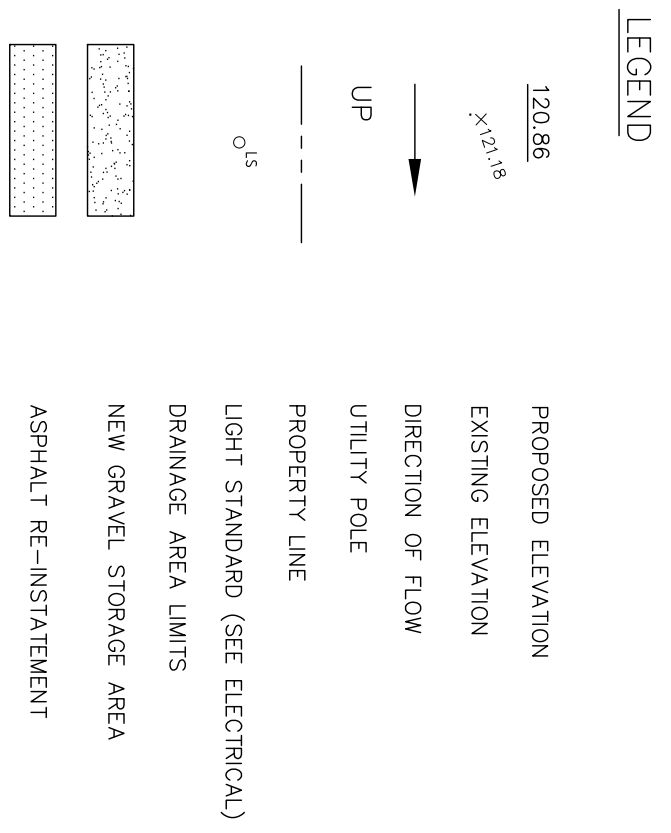
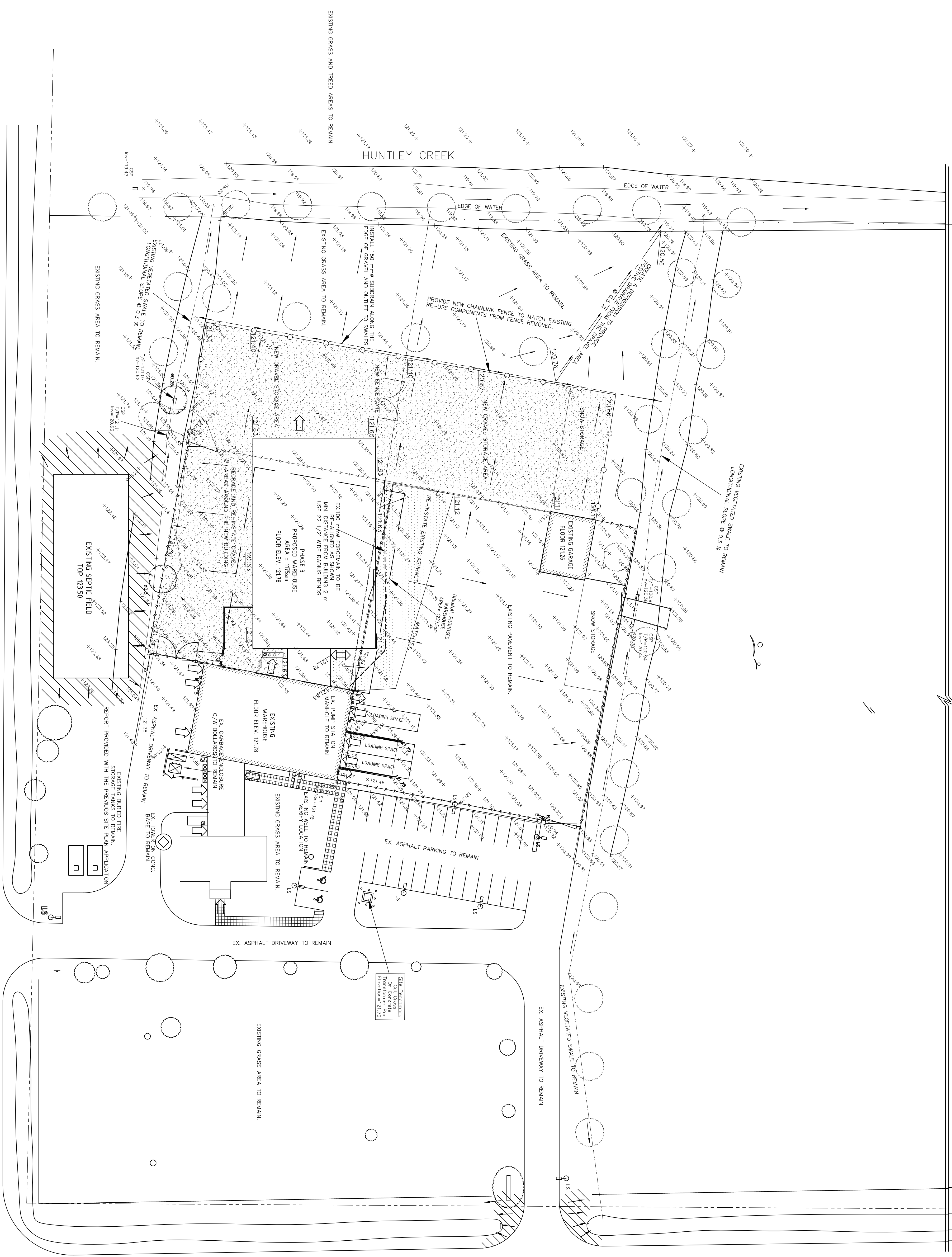


EXISTING GRASS AND TREED AREAS TO REMAIN.

EXISTING GRASS AND TREED AREAS TO REMAIN.



- NOTES**
- DO NOT SCALE DRAWING
  - VERIFY LOCATIONS AND ELEVATIONS OF EXISTING SERVICES TO BE MAINTAINED OR REMOVED PRIOR TO OBTAIN LOCATES. CALL 1-800-400-2255 BEFORE EXCAVATING
  - CONTRACTOR IS TO COMPLY WITH THE CITY OF OTTAWA REQUIREMENTS FOR TRAFFIC CONTROL WHEN WORKING ON MUNICIPAL ROAD.
  - ALL WORK AND MATERIALS SHALL BE IN ACCORDANCE WITH THE CITY OF OTTAWA AND / OR ON AND PROVINCIAL STANDARDS (OPS)
  - BARBER AND DEPRESSED CURB AS PER STANDARD DRAWING SC1.1
  - CONTRACTOR IS RESPONSIBLE TO OBTAIN ALL NECESSARY PERMITS PRIOR TO CONSTRUCTION
  - RESTORE PAVEMENT STRUCTURE, CURBS AND SURFACES ON EXISTING ROADS TO THEIR ORIGINAL CONDITIONS STANBROD ROAD CUT (REINSTATEMENT AS PER STD. D-44; R10
  - REFER TO ARCHITECT'S PLANS FOR EXISTING AND PROPOSED DIMENSIONS AND LAYOUT INFORMATION SHALL BE SUPPLIED PRIOR TO COMMENCEMENT OF CONSTRUCTION
  - REFER TO SEPTIC SYSTEM DETAILS
  - SUBMITTED WITH THE PREVIOUS SITE PLAN APPLICATION
  - REFER TO THE HYDROLOGICAL DRAWINGS AND REPORTS FOR WATER SHIPPLY CALCULATIONS AND FLOW DESIGN SUBMITTED WITH THE PREVIOUS SITE PLAN APPLICATION
  - THIS PLAN SHOULD BE READ IN CONJUNCTION WITH THE SITE SERVICES AND SWM REPORT, AND THE GEOTECHNICAL REPORT



**BENCH MARK**  
CUT CROSS ON CONC. TRANSFORMER PAD - ELEVATION 121.79

**PAVEMENT RE-INSTATEMENT**

GRANULAR B TYPE II	450 mm
GRANULAR C	150 mm
H.L.B OR SUPERPAVE 19	50 mm
H.L.3 OR SUPERPAVE 12.5	40 mm

**NEW GRAVEL STRUCTURE**

GRANULAR B TYPE II	450 mm
GRANULAR A	150 mm

**Capital Engineering Group Ltd**  
Municipal / Land Development

110 Dosselton Way  
Ottawa, Ontario K1G 4S5  
T: (613) 739-0770 F: (613) 739-7202  
E: [cegl@rogers.com](mailto:cegl@rogers.com)

**P R** **PYE & RICHARDS -**  
**T Y** **TEMPERAND & YOUNG**  
**ARCHITECTS INC.**

824 Meath St. Suite 200  
Ottawa, ON K1Z 5E8  
613.724.7700  
[info@prty.ca](mailto:info@prty.ca)

**BCR NATIONAL ALARM CENTRE WAREHOUSE ADDITION PHASE 3**

2415 RICHARDSON SIDE RD  
OTTAWA, ONTARIO  
CARR ON

**GRADING AND DRAINAGE PLAN**

PROJECT NO. 19-41 DRAWING NO. G1  
SCALE 1 : 400  
DRAWN BY ANDREW  
CHECKED BY AN  
PLOT DATE -  
PLOTTED BY: ANDY