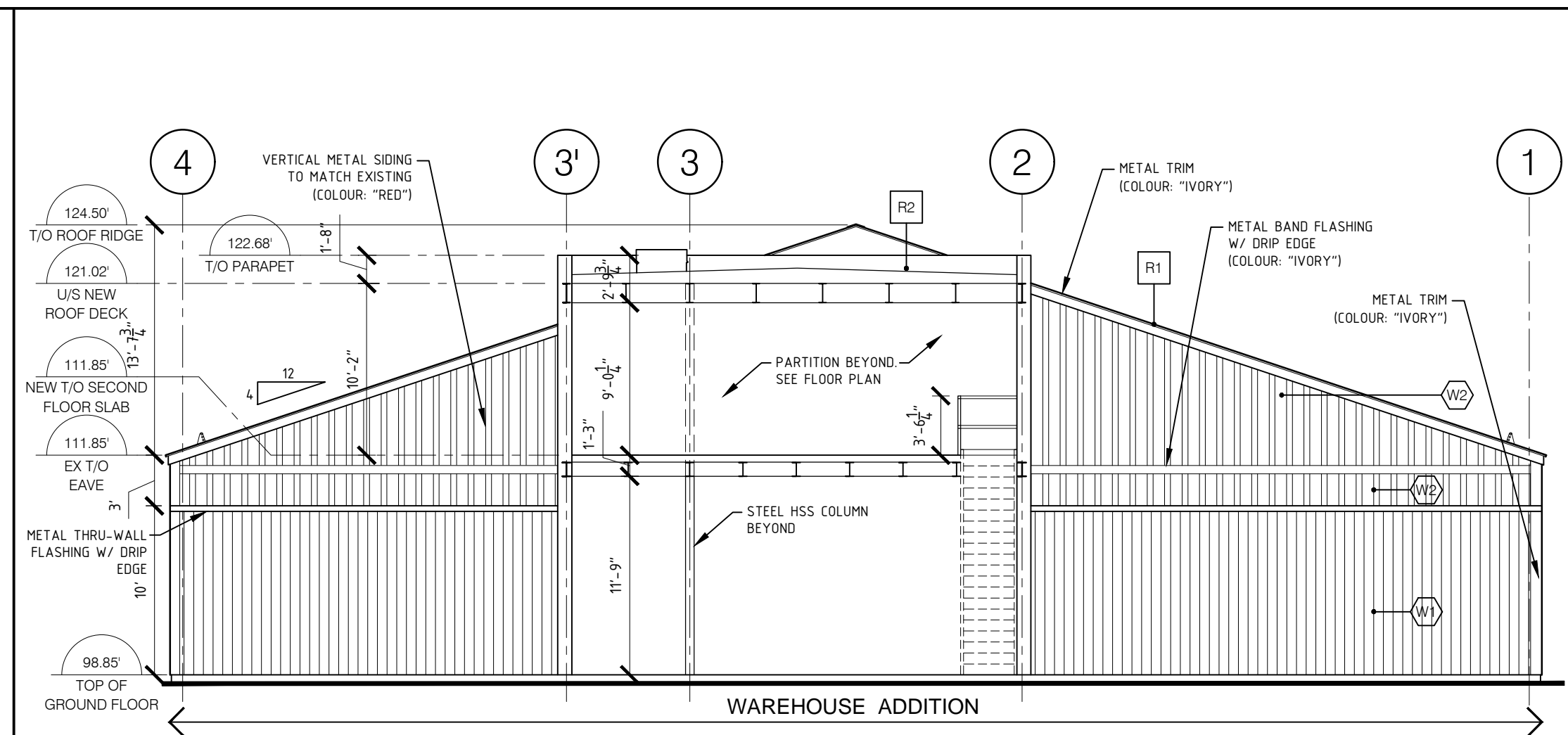
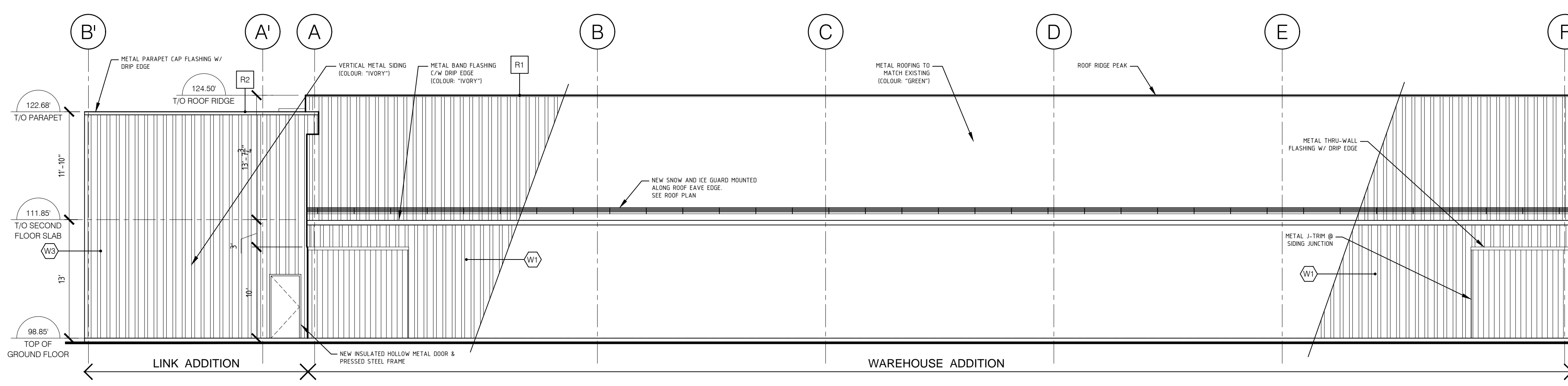


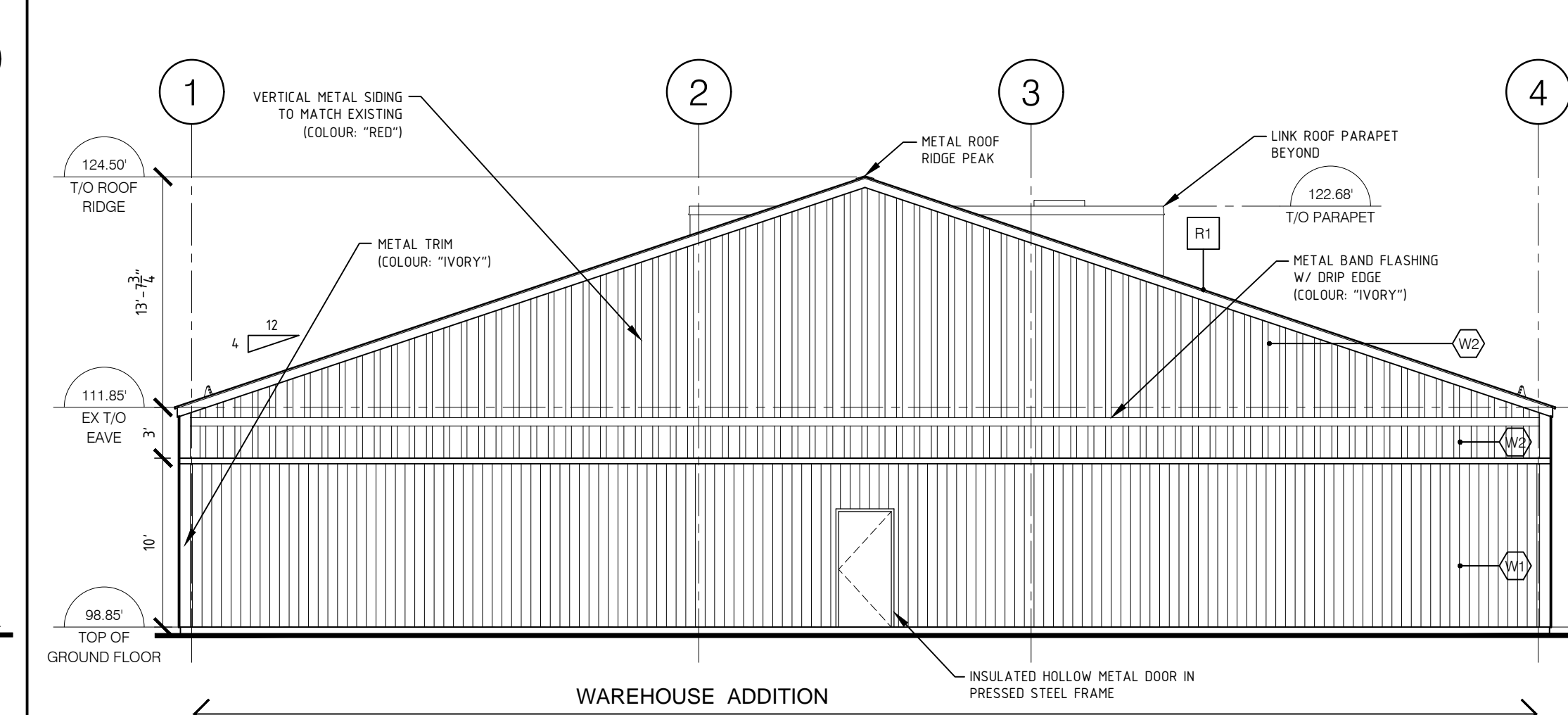
7 NORTH ELEVATION
A-06 scale: 1/8" = 1'-0"



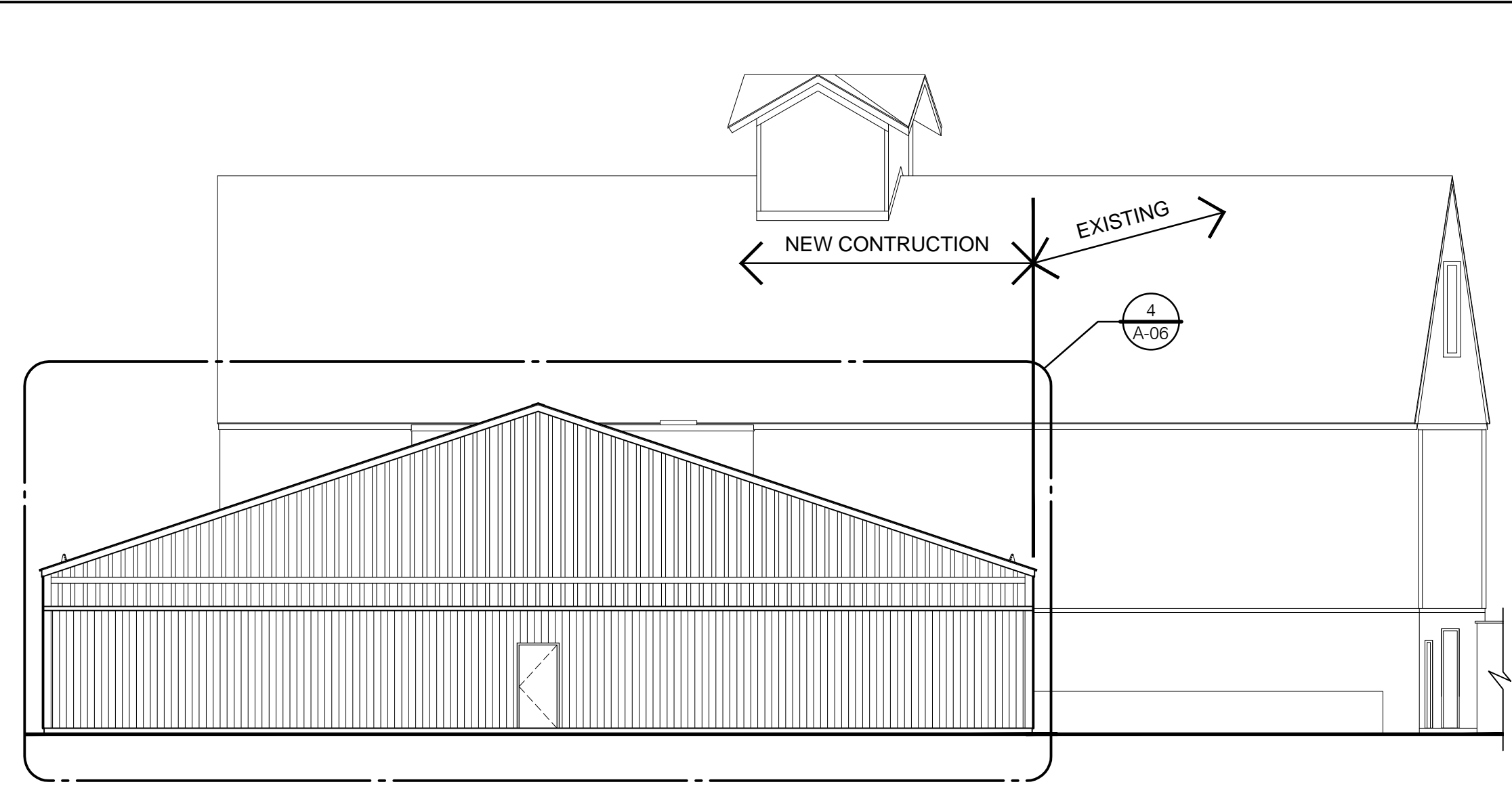
6 EAST ELEVATION / SECTION
A-06 scale: 1/8" = 1'-0"



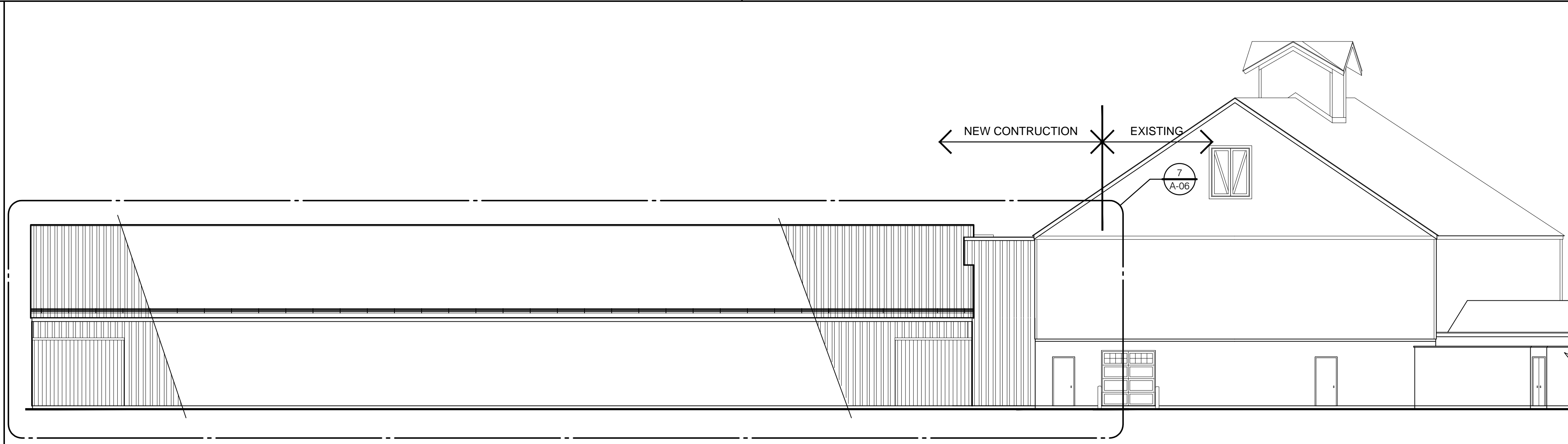
5 SOUTH ELEVATION
A-06 scale: 1/8" = 1'-0"



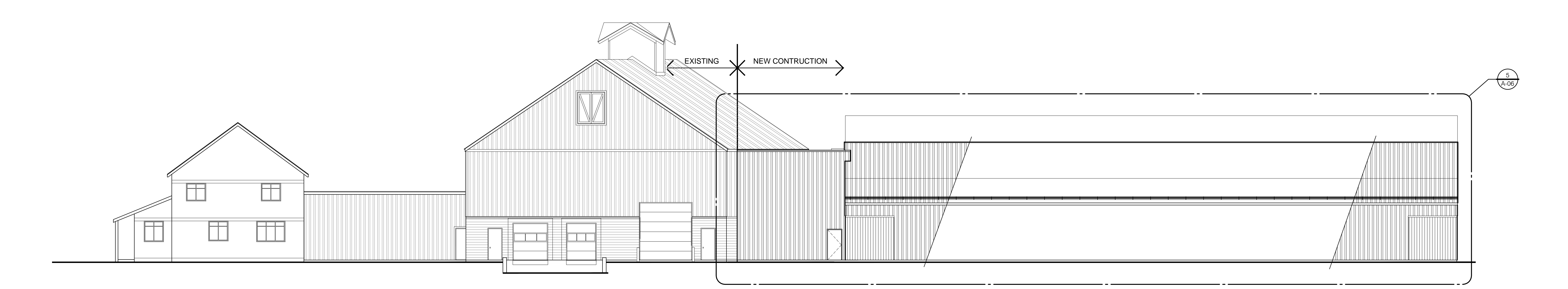
4 WEST ELEVATION
A-06 scale: 1/8" = 1'-0"



3 OVERALL WEST ELEVATION
A-06 scale: 3/32" = 1'-0"



2 OVERALL SOUTH ELEVATION
A-06 scale: 3/32" = 1'-0"



1 OVERALL NORTH ELEVATION
A-06 scale: 3/32" = 1'-0"

- EXTERIOR WALL TYPES:**
- (W1) VERTICAL METAL SIDING ON OUTSIDE FACE OF COL'S
8" HORIZONTAL GIRTS ON OUTSIDE FACE OF COL'S
C/W 8" BATT INSULATION (R20)
METAL LINER (V.R.I)
 - (W2) VERTICAL METAL SIDING ON
1 1/2" HORIZONTAL Z-GIRTS @ 24" O.C.
PEEL & STICK ON
3" EXTERIOR SHEATHING ON
6" ST. STEEL STUDS @ 16" O.C.
C/W 6" BATT INSULATION (R20)
- BRACE FRAME - SEE STRUCTURAL.
6" STEEL STUDS @ 16" O.C.
C/W 6" BATT INSULATION (R20)
6 MIL POLY VAPOUR BARRIER
3" GYPSUM BOARD
 - (W3) VERTICAL METAL SIDING ON
3" EXTERIOR SHEATHING BOARD
3" SEMI RIGID INSULATION
3" Z-GIRTS @ 24" O.C.
PEEL & STICK MEMBRANE ON
8" REINFORCED CONCRETE BLOCK WALL

- ROOF TYPES:**
- (R1) PRE-FINISHED METAL RIBBED ROOF (BY PRE-ENG. BUILDING SUPPLIER)
STEEL ROOF PURLINS
C/W R33 PILLOWED BATT INSULATION
C/W VAPOUR BARRIER LINER
 - (R2) 2 PLY MOD. BIT. ROOF MEMBRANE ON
3" PROTECTION BOARD ON
TAPERED POLYISO INSULATION (MIN 2% SLOPE) ON
4" POLYISO BASE INSULATION ON
VAPOUR RETARDER ON
3" EXT. GRADE PLYWOOD ON
3" STEEL ROOF DECK ON
DWSJ (REFER TO STRUCTURAL DRAWINGS)

REV.	DESCRIPTION	DATE
4	ISSUED FOR PRE-ENG BUILDING TENDER	19 AUG 2020
3	ISSUED FOR 90 % REVIEW	5 AUG 2020
2	ISSUED FOR 66 % REVIEW	5 JUNE 2020
1	ISSUED FOR CLIENT APPROVAL OF DESIGN	APR 20 2020

THIS DRAWING IS THE EXCLUSIVE PROPERTY OF PYE & RICHARDS - TEMPRANO & YOUNG ARCHITECTS INC. COPYRIGHT RESERVED.

CONTRACTOR TO VERIFY ALL DIMENSIONS AND NOTIFY THE ARCHITECT OF ANY DIMENSIONAL ERRORS AND/OR POSSIBLE TRADE INTERFERENCE/CONFLICT FOR CLARIFICATION PRIOR TO COMMENCEMENT OF THE WORK. DO NOT SCALE DRAWINGS.

SEAL PROJECT NORTH

Not for construction unless SEALED and SIGNED

P R PYE & RICHARDS -
T Y TEMPRANO & YOUNG
ARCHITECTS INC.

824 Meath St. Suite 200 613. 724. 7700
Ottawa, ON K1Z 6E8 info@prty.ca

PROJECT
CBC NATIONAL ALARM CENTRE
WAREHOUSE ADDITION
PHASE 3

2415 RICHARDSON SIDE RD CARP, ON
DRAWING
BUILDING ELEVATIONS

PROJECT NO.	19-41	DRAWING NO.	
SCALE	AS NOTED		
DRAWN	M.D.		A-06
CHECKED	G.K.		
PLOT DATE	-23/09/2020	PLOTTED BY:	IMAC01-WIN